

WELCOME!

Valley Transportation Authority



Wednesday
December 16, 2009



Upcoming Construction
Projects

Valley Transportation Authority



VTA Engineering and
Construction Division



Construction Contracts

- Types of Projects
- Highlight Upcoming Construction

Types of VTA Projects

- Includes variety of projects
 - Highways
 - Facilities
 - Commuter Rail
 - Freight Railroad Relocation
- Funded with various sources
 - Local
 - Federal and State Grants
 - Measure A



Highway Projects

- Highway Improvement Projects
 - Construction Cost: \$160M to \$180M
 - Contracts:
 - US 101 Auxiliary Lanes –Embarcadero Rd to Route 85
 - I-880 HOV Widening
 - I-880/I-280/Stevens Creek Improvements
 - 237/880 Express Connector
 - I-880/Route 237 Planting
 - Scope: Reconfigure interchanges, add auxiliary lanes, add HOV lanes, construction new bridges/structures, to improve traffic and access. Construct landscaping and irrigation systems.
 - Construction Schedule: Late 2010
 - Type of Work: civil, structures, ITS, electrical, planting, irrigation systems.



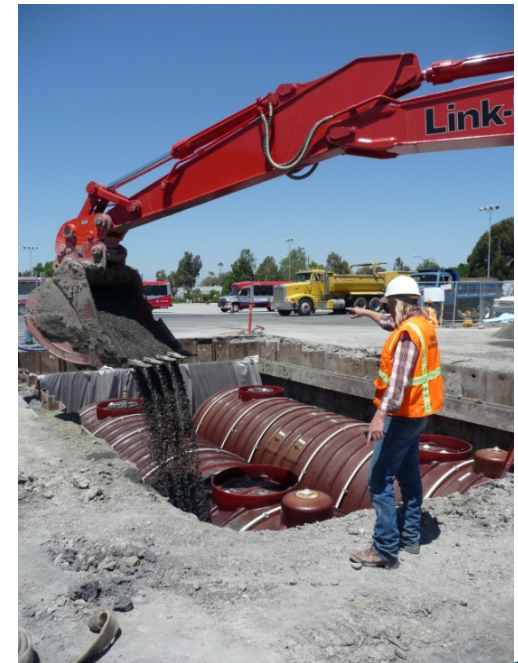
Facilities Projects

- Maintenance of Way Projects
 - Construction Cost: \$ 6.5M
 - Contracts: Retrofit and rehabilitation of light rail systems elements.
 - Scope: Construction and installation of trackway, rail, special trackwork, OCS, substations, signals, wayside equipment, elevators and escalators.
 - Construction Schedule: Starting Early 2010
 - Type of Work: Civil, Trackwork, Electrical, Mechanical, OCS, and Signals.



Facilities Projects

- Coach / LRV Facilities Projects
 - Construction Cost: \$ 2M
 - Contract: Fueling Improvements and Maintenance Facility Upgrades
 - Scope: Construction of unleaded fuel dispensing facility and paint mixing room at VTA operating divisions.
 - Construction Schedule: Starting early 2010
 - Type of Work: Civil, building, fuel tank installation, mechanical, electrical, etc.



Facilities Projects

- Security Projects

- Construction Cost: \$3M
- Contract: Security contracts various VTA facilities.
- Scope: Installation of CCTV at LRT stations and yards, security fencing and gates, laser intrusion detection, other safety systems.
- Construction Schedule: Early 2010
- Type of Work: Electrical and minor civil



Facilities Projects

- Passenger Facilities and Pedestrian Improvements
 - Construction Cost: \$25M
 - Contract: Pedestrian improvements, bus stops and transit center construction
 - Scope: Construction of sidewalks, landscape, lighting, traffic signals, bus stops/stations and transit center.
 - Construction Schedule: Starting Mid 2010
 - Type of Work: Civil, architectural, earthwork, landscaping, electrical, and traffic signals.



Commuter Rail

- Caltrain Service Upgrades
 - Construction Cost: \$8M
 - Contract: Various capital improvement projects to the Caltrain system
 - Scope: Upgrade of at-grade vehicular crossings and construction of pedestrian grade-separated crossing.
 - Construction Schedule: Starting Mid 2010
 - Type of Work: General civil, structural, rail signals, and electrical



Freight Railroad Relocation

- Construction Cost:\$117M
- Contracts:
 - Mission/Warren/Truck Rail Grade Separation
 - Kato Road Grade Separation
 - Wrigley Creek Improvements
- Scope: Add roadway/rail grade separations and re-align creek with associated mitigations
- Construction Schedule: Early 2011
- Type of Work: civil, structures, planting, irrigation systems



.....

Prequalification for VTA Construction Contracts

Valley Transportation Authority

Contracts and Materials
Management Department



VTA Bonding

- 10% Bidder's Bond Required for all Contracts
- 100% Performance and Payment Bonds Required for Contracts > \$25000.
- SBA assistance is available



VTA Prequalification

- Required for all contracts > \$1.3M
- All subcontractors over 10% of Engineer's Estimate
- 35 days allowed for prequalification



Disadvantaged (DBE)
& Small Business (SBE)
Enterprise Programs

Valley Transportation Authority

Office of Small &
Disadvantaged Businesses



DBE and SBE Programs

- Ensures a level playing field for small, minority, and women businesses
- Together allows for participation by all groups
- DBE Program for small disadvantaged minority and women businesses



DBE PROGRAM

- Mandated by Federal regulations for Federally-funded contracts only
- Quotas are illegal
- Subcontracting Goal-based Program
- Goals based primarily on
 - Subcontracting opportunities
 - Available DBEs to perform the subcontracting



DBE Program

- Per 49 CFR Part 26 of USDOT regulations
- Must be a small business as defined by Small Business Administration (SBA) and cannot exceed \$22.41 million average.
- Owned and controlled 51% by socially & economically disadvantaged individual(s)
- Owner(s)' personal net worth must not exceed \$750,00, excluding primary home & business interest & community property
- Firms can apply for DBE certification to VTA or a Unified Certification Program agency (www.californiaucp.com)



SMALL BUSINESS ENTERPRISE (SBE) PROGRAM

- Subcontracting goal-based program modeled after DBE Program
- Race, ethnicity & gender not factors to qualify as a SBE
- Applies to *non-federally* funded contracts
- Size standards: Uses SBA and USDOT standards
- Can apply to and be certified as an SBE by VTA
- VTA accepts DGS-certified SBEs for construction only
- Any certified DBE firm is eligible to participate as a SBE
- No personal net worth (PNW) requirement
- Small minority & women firms over PNW can qualify



Meeting Contract Goals

- A prime contractor must meet a DBE or SBE contract goal or document sufficient good faith efforts
- Good faith efforts requires negotiations with SBEs or DBEs, reasons for rejection of sub-bids, and more
- DBEs and SBEs must be certified by the time of bid to count towards a contract goal



VTA Solicitations

- Go to www.vta.org, then Procurement
- Register to get notices via email and to download bid documents





Click the Project Name to view details. Click the column labels to sort.
Sorts may be ascending or descending.

Show

items per
page

Open Projects 1-2 (of 2)					
Project	Project Number	City	State	Bid Due Date	Estimated Cost
Project Name: Guadalupe Corridor DC Switchgear Replacement	C09109	San Jose	CA	01/18/10 1:00 PM	\$3,500,000- \$4,000,000
Description: A. General: 1. DC Switchgear Replacement: Design, manufacture, install, inspect, deliver, test and document the procurement of DC Switchgear to replace existing DC Switchgear in six (6) traction power substations. The locations of substations are along the Guadalupe Corridor of the VTA Light Rail System. 2. Modifications to DC Feeder Cable: ...					
Project Name: Bus Stop Pavement Improvements FY10	C09159	San Jose	CA	12/14/09 2:00 PM	\$100,000-\$250,000
Description: Bus stop Portland Cement Concrete pad restorations and various sidewalk and street improvements for ADA approved access at various bus stop facilities. The work under this contract includes: Demolition and removal of existing improvements. Clearing and grubbing, and earthwork. Constructing sidewalk, curb and gutters, and bus pads. Remove existing b...					



[Contractors, click here for a FREE TRIAL!](#)



[i back](#)**Bus Stop Pavement Improvements FY10**

C09159

This information does not supercede the project plans and specifications. All prospective bidders must pick up plans/specifications from the owner.

Project Name: Bus Stop Pavement Improvements FY10

Project Type: Engineering/Civil

Ownership: Public

Project City, State: San Jose, California

Engineer's Estimated Cost: \$100,000-\$250,000

Pre-Qualification for Bidders: Not Required

License Type Required: A

Project/Contract Number: C09159

Project Contact: Travis Weeks

Santa Clara Valley Transportation Authority

3331 N 1st St

Building A

San Jose, CA 951341906

Tel:(408) 952-8979

Fax:(408) 955-9729

travis.weeks@vta.org

Bid Due Date: 12/14/09

Bid Due Time: 2:00 PM

Project Duration: 120 Calendar Days

Liquidated Damages: \$500.00 Per Calendar Day

Cost of Printed Plans & Specs: \$25.00

Non-Mandatory Pre Bid Conference Date: 12/02/09

Pre Bid Conference Time : 11:00 AM



Office of Small & Disadvantaged Businesses

- Set goals
- Monitor contracts
- Conduct outreach
- Certify SBE/DBEs
- Assist in problem-solving
- Main line:
(408) 321-5962

