

RAIL SYSTEM OVERVIEW

Network Description

VTA operates nearly 42 miles of light rail service, and serves 62 stations. Service is provided along three routes (See Figure 4-3):

Alum Rock–Santa Teresa Line

The Alum Rock-Santa Teresa Line operates between the Santa Teresa Station in South San Jose and the Alum Rock Station in East San Jose just south of Alum Rock on Capitol Avenue. The line is approximately 27 miles long and serves 38 stations. It operates every 15 minutes on weekdays and weekends.

Mountain View–Winchester Line

The Mountain View-Winchester Line operates between the Mountain View Multi-Modal Station on the northern edge of downtown Mountain View and the Winchester Station in Campbell. The line is approximately 22 miles long serving 37 stations. It operates every 15 minutes on weekdays and every 30 minutes on weekends. The segment of the line between the Convention Center in Downtown San Jose and the Tasman Station in North San Jose is served in conjunction with the Alum Rock-Santa Teresa Line.

Ohlone/Chynoweth-Almaden Line

The Ohlone/Chynoweth-Almaden Line operates between the Almaden Station in Almaden Valley and the Ohlone/Chynoweth Station in South San Jose. This line is slightly over one mile in length serving 3 stations and operates every 15 minutes on weekdays and weekends.

Light Rail Fleet

The light rail system operates a relatively consistent number of trains throughout the year, with some fluctuation when San Jose State University (SJSU) is not in session. While the numbers of cars vary slightly depending on time of day, the number of trains running remains the same. Service hours are also consistent through the year. The light rail fleet consists of 100 cars.

Table 4-1: Number of Trains

| | Number of Trains | Number of Cars |
|--------------|------------------|----------------|
| M-F: AM Peak | 25 | 55 |
| M-F: Midday | 19 | 34 |
| M-F: PM Peak | 25 | 53 |
| Saturday | 19 | 19 |
| Sunday | 19 | 19 |

Table 4-2: Service Hours

| Day of Week | Daily Service Hours | Annual Service Hours |
|-------------|---------------------|----------------------|
| Weekday | 420:00 | 107,100:00 |
| Saturday | 330:25 | 17,181:40 |
| Sunday | 330:25 | 19,164:10 |

Ridership

Over the course of the last three years, ridership levels have been increasing on the light rail system. In October of 2008 ridership was up 52% from October of 2005, 12% from 2006 and 18% from 2008.

Figure 4-1: Average Weekday Ridership Levels from Fiscal Year 2006-2009

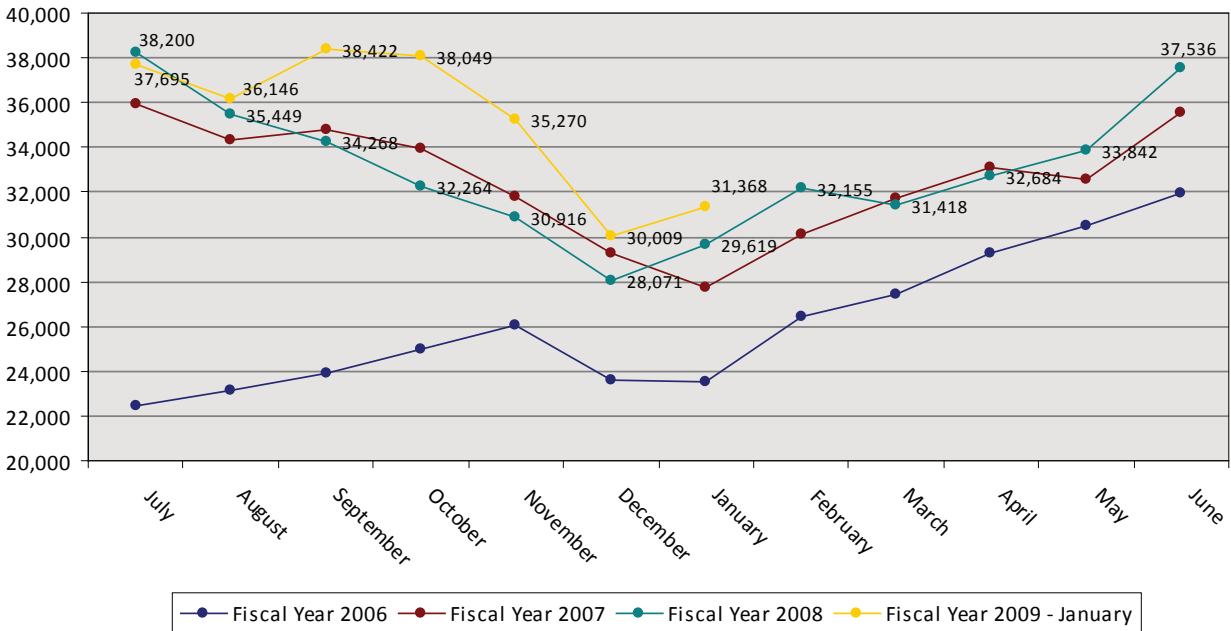


Figure 4-2: Average Weekday Ridership by Hour

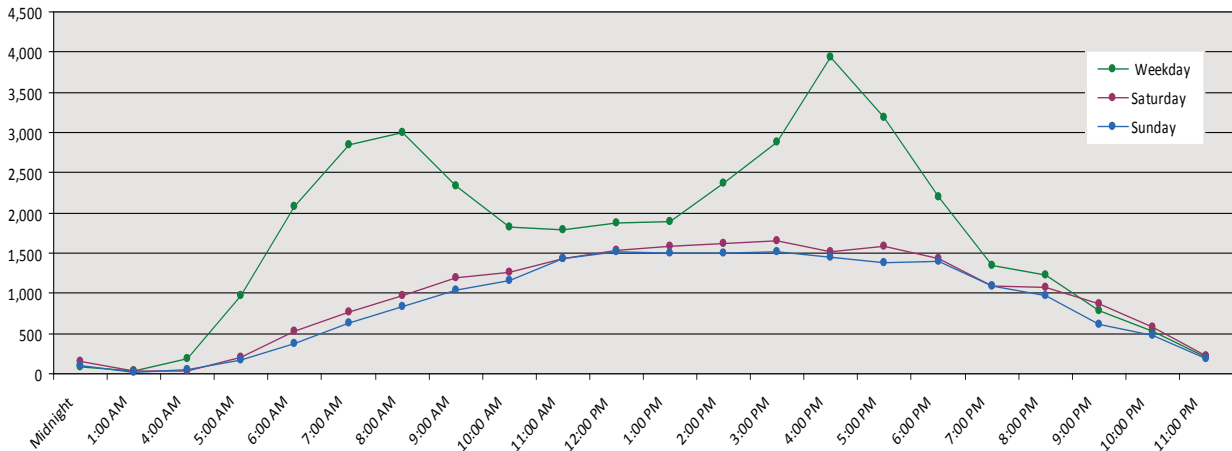
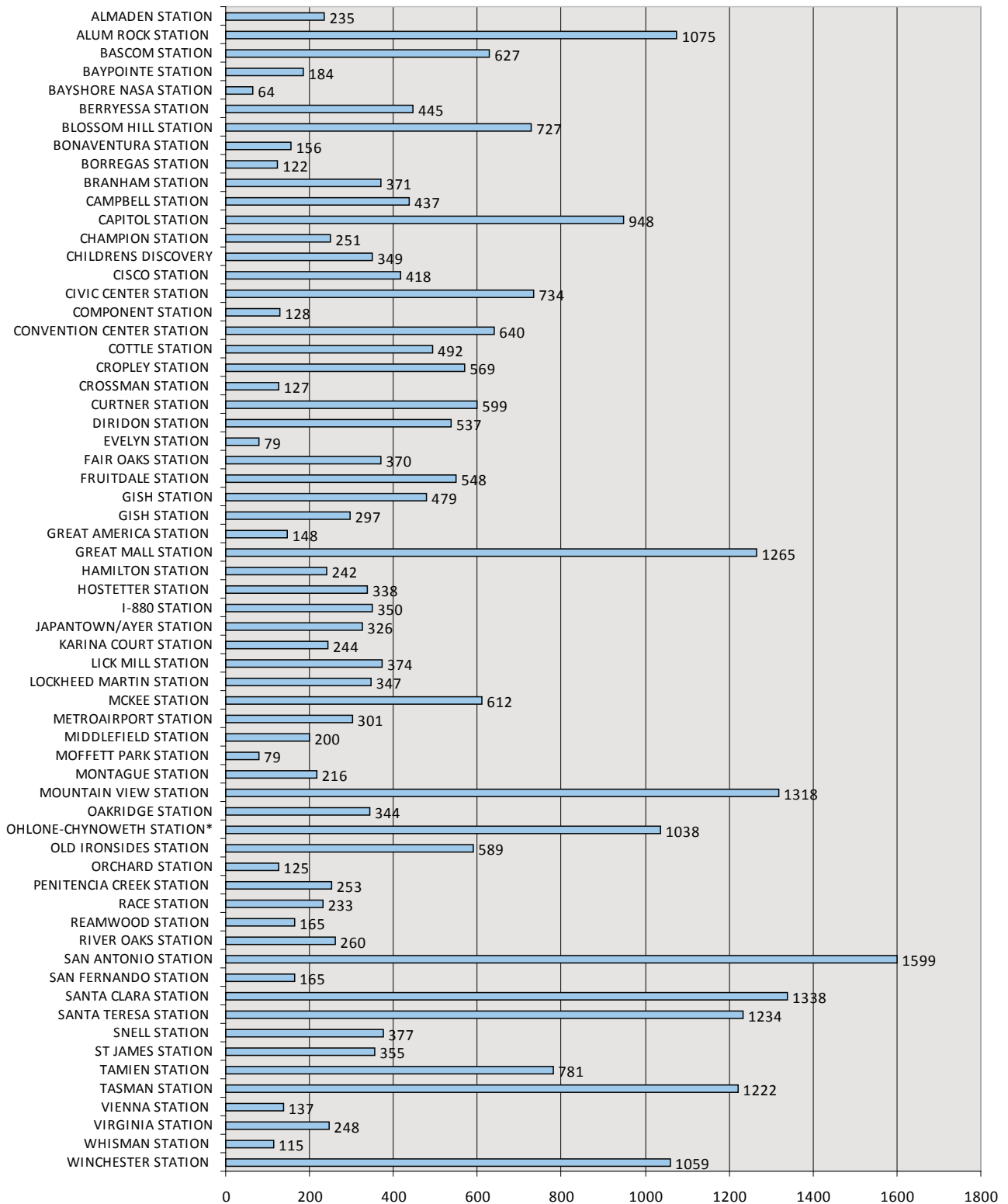


Figure 4-4: Average Weekday Ridership by Station



Light Rail Systems Analysis

The VTA Light Rail System Analysis is a comprehensive evaluation of the light rail system, its current constraints, strengths and weaknesses, and its ability to attract new ridership. On the basis of this evaluation, strategies will be proposed to enhance the effectiveness, usefulness and efficiency of the light rail system.

The Light Rail System Analysis will provide a comprehensive evaluation of the infrastructure and operational flexibility of the existing light rail system and an evaluation of operational impacts and user benefits of the planned extensions and other capital improvements. The study began in September of 2008 and is expected to be completed in approximately 12 months.

The Light Rail System Analysis will consist of three inter-relating components: market analysis, operations analysis and capital needs. A project team made up of VTA staff and consultants has initiated several tasks to analyze boarding activities, Park and Ride lot utilization, rail-to-rail transfer activities, and existing ridership patterns. Service change proposals recommended by this analysis will be incorporated into future Annual Transit Service Plans.