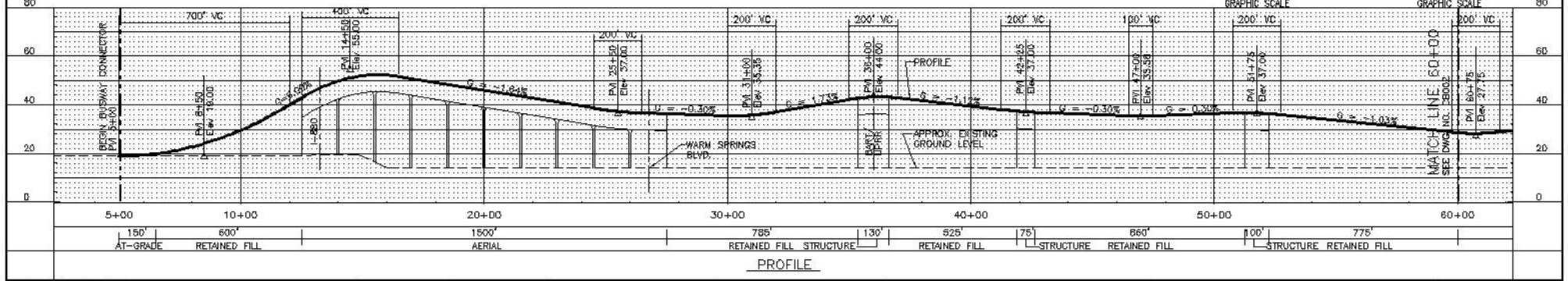
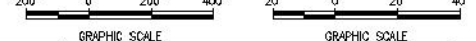




PLAN



PROFILE

REV	DATE	BY	SA	APP	DESCRIPTION

APPROVED FOR OR PURPOSES:	DESIGNED BY J. MAHER
	DRAWN BY V. FELIX
	CHECKED BY J. MAHER
VIA DATE	APPROVED BY D. MINISTER
SUBMITTED	DATE 25NO02

EARTH TECH
 1750 WILSON BLVD., SUITE 1000
 SAN JOSE, CA 95128
 TEL: (415) 406-5555

VALLEY TRANSPORTATION AUTHORITY
 BART ALTERNATIVE

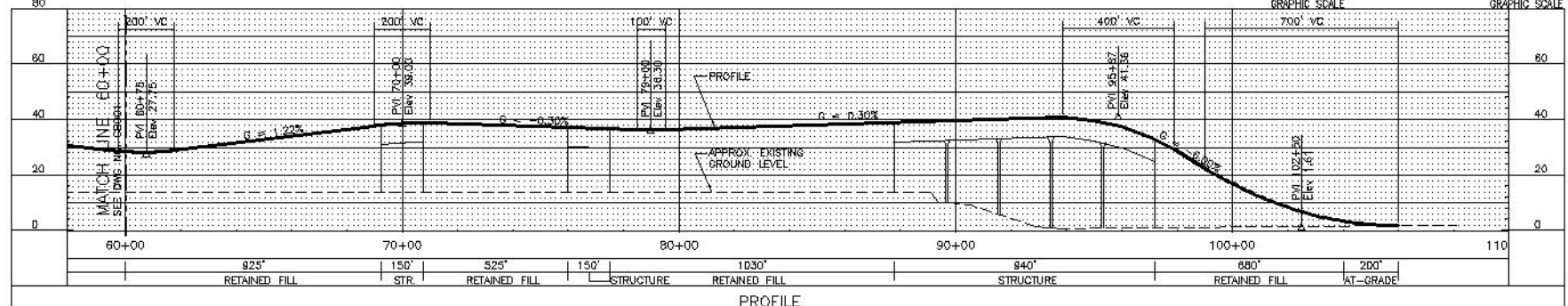
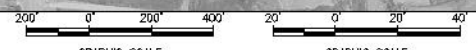
SILICON VALLEY RAPID TRANSIT CORRIDOR
 BART - BUILD ALTERNATIVE
 BASELINE ALTERNATIVE
 DIRECT BUSWAY CONNECTOR FROM
 I-680 TO I-880, SHEET 1 OF 2

DATE 11MR03	SCALE 1"=200'; 1"=20'
FILE NO. CB001.DWG	REV PAGE NO.
DWG NO. CB001	

FIGURE D-1



PLAN



PROFILE

REV	DATE	BY	APP	DESCRIPTION

APPROVED FOR BR PURPOSES:	DESIGNED BY J. MAHER
	DRAWN BY V. FELIX
	CHECKED BY J. MAHER
VIA DATE	APPROVED BY D. MINISTER
SUBMITTED	DATE 25NO02

--

EARTH TECH
 17500 WILSON BLVD., SUITE 1000
 SAN JOSE, CA 95130
 TEL: (415) 406-5555

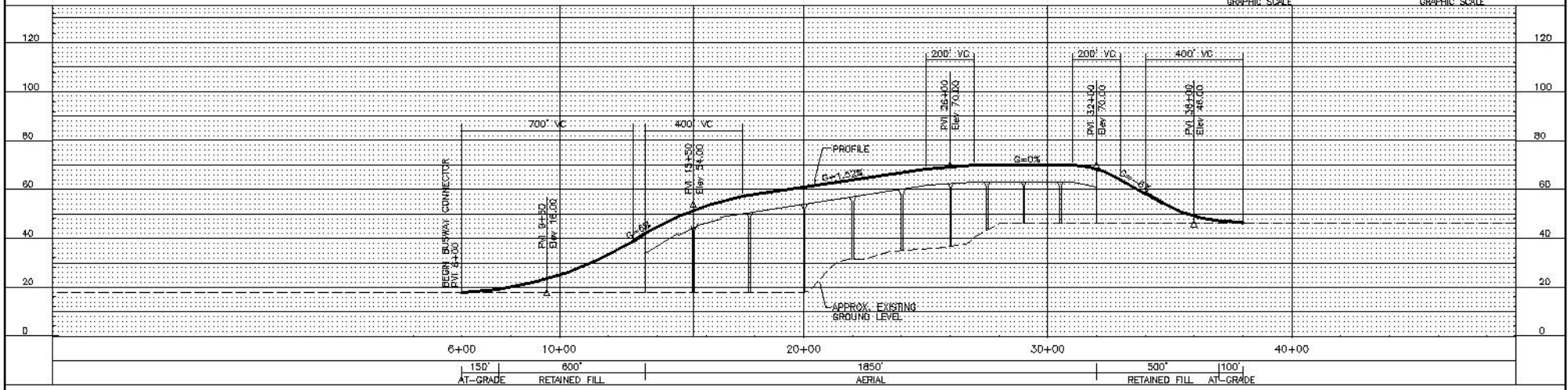
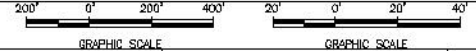
SILICON VALLEY RAPID TRANSIT CORRIDOR
 BART - BUILD ALTERNATIVE
 BASELINE ALTERNATIVE
 DIRECT BUSWAY CONNECTOR FROM
 I-680 TO I-880, SHEET 2 OF 2

CAED DATE 11MR03
SCALE 1"=200'H; 1"=20'V
CAED FILE NO. CB002.DWG
DWG NO. CB002
REV
PAGE NO.

FIGURE D-2



PLAN



PROFILE

<table border="1"> <tr> <td>REV</td> <td>DATE</td> <td>BY</td> <td>SA</td> <td>APP</td> <td>DESCRIPTION</td> </tr> <tr> <td> </td> <td> </td> <td> </td> <td> </td> <td> </td> <td> </td> </tr> </table>					REV	DATE	BY	SA	APP	DESCRIPTION							APPROVED FOR OR PURPOSES: VTA DATE SUBMITTED	DESIGNED BY: J. MAHER DRAWN BY: V. FELIX CHECKED BY: J. MAHER APPROVED BY: D. MINISTER DATE: 25NO02	EARTH TECH <small>tyco</small> 1000 WILSON BLVD, SUITE 1000 NEWTON, MASSACHUSETTS 02459 TEL: (617) 452-5555	Valley Transportation Authority	SILICON VALLEY RAPID TRANSIT CORRIDOR BART - BUILD ALTERNATIVE BASELINE ALTERNATIVE DIRECT BUSWAY CONNECTOR FROM I-880 TO MONTAGUE EXPRESSWAY	GADD DATE: 11MR03 SCALE: 1"=200'H; 1"=20'V GADD FILE NO: CB003.DWG DWG NO: CB003 REV: PAGE NO:
REV	DATE	BY	SA	APP	DESCRIPTION																	

FIGURE D-3