

VTA's BART Silicon Valley Phase II Extension Project

Downtown/Diridon Community Working Group
November 13, 2018



1

Agenda

- Follow-up Items
- Phase II Update
- Construction Education and Outreach Plan
- Real Estate Planning Process
- Diridon Integrated Station Concept Plan
- Transit Oriented Development Strategy & Access Planning Studies Update
- Next Steps



2

Role of the CWG

- Be project liaisons
- Receive briefings on technical areas
- Receive project updates
- Build an understanding of the project
- Collaborate with VTA
- Contribute to the successful delivery of the project



Your Role as a CWG Member

- Attend CWG meetings
 - Bring your own binder (BYOB)
- Be honest
- Provide feedback
- Get informed
- Disseminate accurate information
- Act as conduits for information to community at large



Role of the CWG Team

CWG Team Member	Role
Eileen Goodwin	Facilitator
Gretchen Baisa	Primary Outreach Contact
Jill Gibson	Phase II Planning Manager
Erin Sheelen	Technical Lead
Charla Gomez	City of San Jose – Planning Liaison
Eric Eidlin	City of San Jose – DOT Liaison



Solutions that move you

5

Upcoming Meetings

New CWG Dates

<http://www.vta.org/bart/upcomingmeetings>

- February 5, 2019, 4:00 – 6:00 PM
- April 16, 2019, 4:00 – 5:30 PM
- June 11, 2019, 4:00 – 6:00 PM
- September 10, 2019, 4:00 – 6:00 PM
- November 12, 2019, 4:00 – 6:00 PM

VTA Board of Directors

<http://www.vta.org/get-involved/board-of-directors>

- December 6, 2018 – 5:30 PM
- January 3, 2019 – 5:30 PM

Diridon Station Joint Policy Advisory Board

<http://www.vta.org/get-involved/policy-advisory-board/diridon-station-joint-policy-advisory-board>

- December 2018 or January 2019



Solutions that move you

6

Follow-Up Items



Follow-Up Items

- An update on Diridon Concept Plan is happening today.
- VTA staff will inform CWG members when station naming is on the agenda for the VTA Board.
- VTA staff will update CWG members of a new funding plan once more information is available.
- Summaries of TOD workshops are available on the TOD/Access Study website (www.vta.org/bart/tod-access-study).
- Fact sheets are now translated and available on the website (<http://www.vta.org/bart/communications/document-library>).



Follow-Up Items

- September CWG meeting notes included an update on the RM3 lawsuit.
- E Taylor Street has been fixed on all maps.
- September CWG meeting notes contained link to intake form (www.vta.org/phase2info).
- September CWG meeting notes contained links to fact sheets.



Solutions that move you

9

Phase II Update

Jill Gibson, VTA

Mark Ramsey, VTA



Solutions that move you

10

- Project Funding Updates
- FTA Process
- On-Going Activities
- Station Naming
- Field Investigations



Project Funding Updates

- **Measure B**
 - State Court of Appeals upheld VTA's Measure B on 10/18/2018
 - Plaintiff-Appellant filed a rehearing Nov.1 for the California Supreme Court to review the ruling
- **Prop 6/TIRCP funding**
 - Did not pass last week
 - \$750 million TIRCP funding committed
- **RM3**
 - Bay Area Toll Authority's counsel filed a motion to dismiss Howard Jarvis Taxpayers Association's suit on 10/10/2018
 - Decision on the motion expected mid-November to mid-December



FTA Process – Expedited Project Delivery (EPD) Review

EPD is a FTA pilot program within the Capital Investment Grant (CIG) Program. To be considered for the pilot program, the project must

- Use public-private partnerships (P3)
- Be planned, operated, and maintained by an existing public transit provider
- Have a Federal share not exceeding 25% of its costs

Sponsors will have

- Recently and successfully completed a fixed guideway project
- Achieved budget, cost, and ridership outcomes
- Staff expertise and other resources to implement new project
- To demonstrate project's capabilities in application



Solutions that move you

- Requires an expedited technical capacity review by FTA
- Opportunities for Public-Private Partnership (P3)
- Seeks increased innovation
- Opportunity to seek use of Value Capture



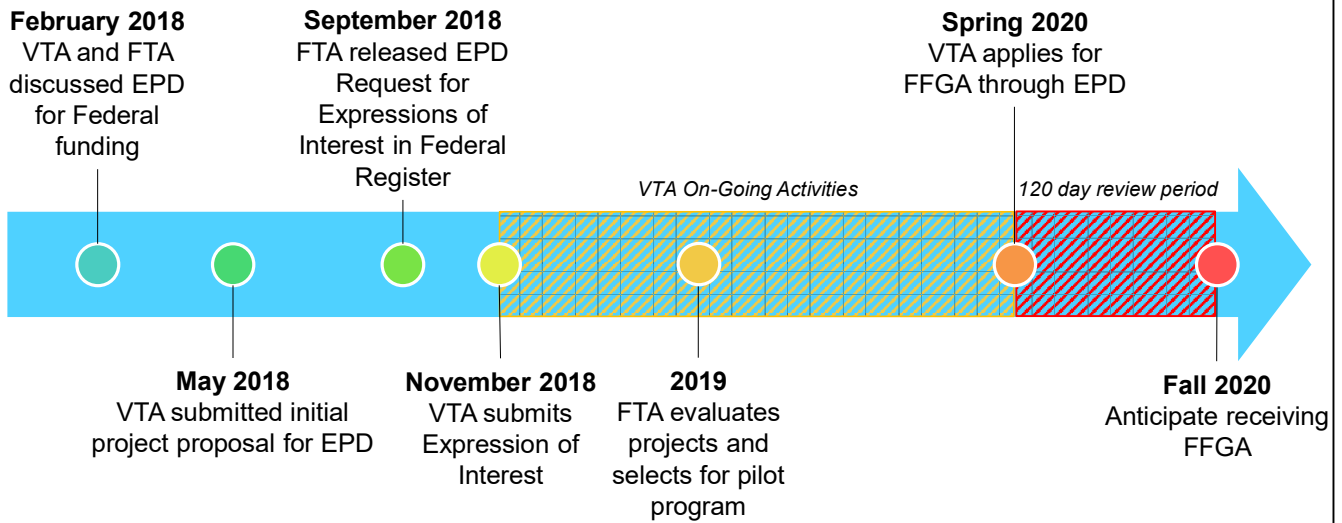
Solutions that move you

Why is EPD a Good Fit?



Notice for Request for Expressions of Interest in FTA's Federal Register.

EPD Process to Receive Full Funding Grant Agreement (FFGA)



Solutions that move you

15

Next Steps for EPD Application Submittal

- FTA evaluates projects and selects pilot program participants
- VTA advances engineering and updates project cost and schedule estimates
- VTA continues identifying P3 opportunities, implementation strategies, policies, and funding and phasing plans
- VTA submits formal EPD application in spring 2020

16

- VTA Board will award the general engineering consultant (GEC) contract at the January 2019 board meeting
- Coordinating with San José and Santa Clara Planning
- Planning for 3rd Party Agreements
- Right-of-Way Engineering and Real Estate Planning
- Developing Design Parameters & Criteria in Coordination with BART in advance of the General Engineering Consultant (GEC)

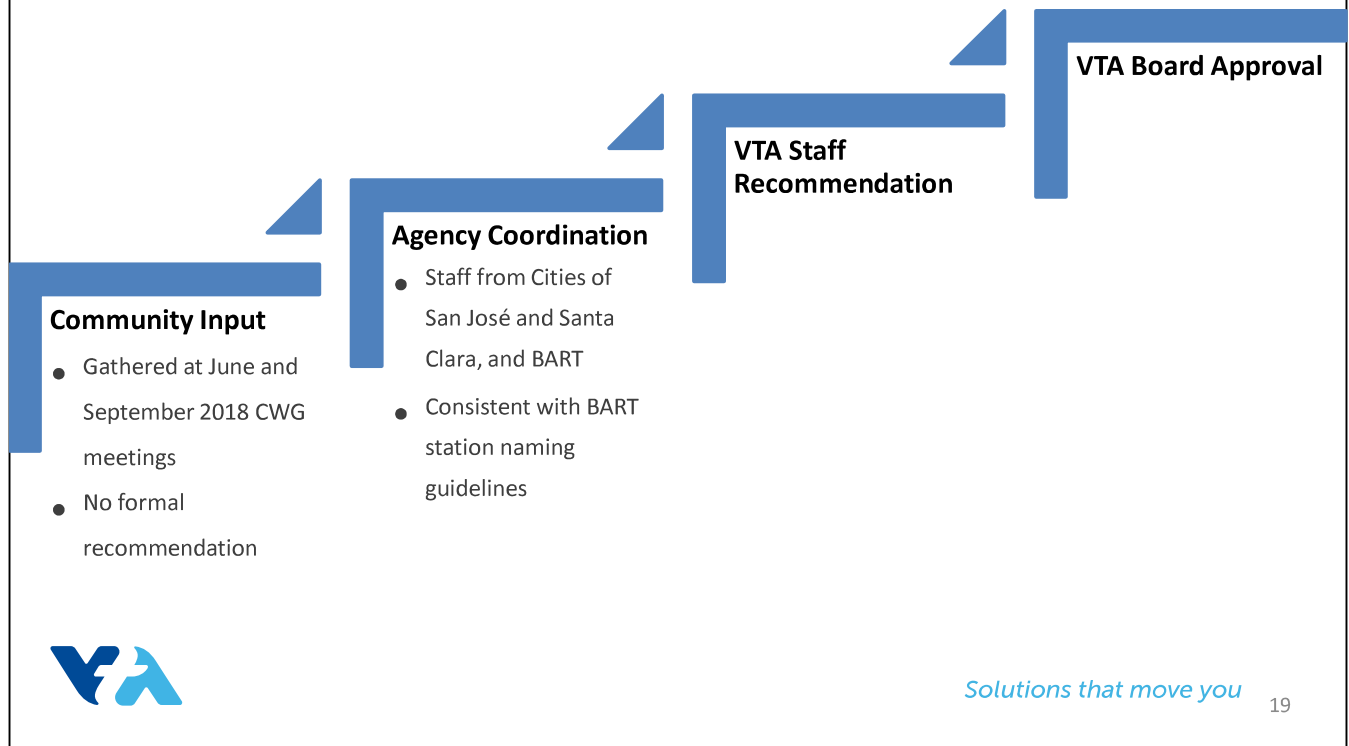


Station Naming Guidelines

- Rider's Perspective
 - Assist passenger in use of system
 - Location within the context of the transit system
- Simplicity
 - For quick recognition and retention
 - Brief and distinctive
 - Easy to pronounce and understand
- Station Area Context
 - Historical basis
 - Geographically significant
 - Withstand the test of time



VTA's BART Phase II Station Naming Steps



Station Naming Status

- **Santa Clara Station**
 - No proposed name change to be consistent with Caltrain station
- **Diridon Station**
 - No proposed name change to be consistent with Caltrain station
 - Future renaming opportunity through intermodal planning with agency partners
- **Downtown San José Station**
 - Will revisit renaming after the station design is refined in late 2019/early 2020
- **Alum Rock/28th Street Station**
 - Moving forward with proposed name change



Downtown San José Station Names From Community Input

- 1st Street / SJSU
- Downtown / SJSU
- Downtown/1st Street
- Market Street / SJSU
- 1st Street
- 1st Street / Market Street
- Downtown San José
- Others?

Discussion of list of station names



Solutions that move you

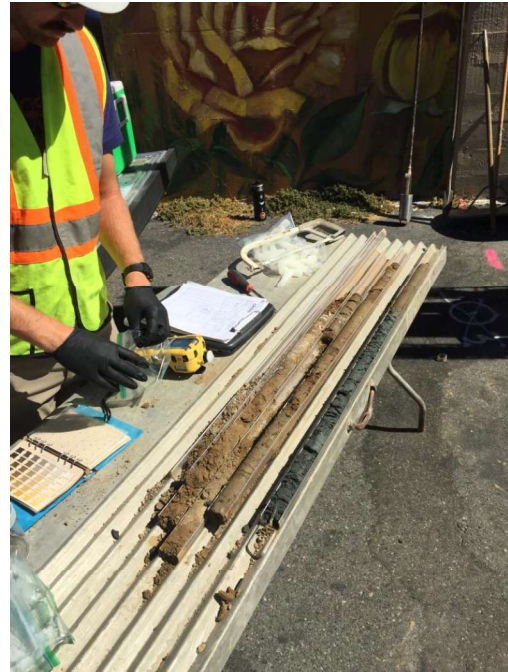
21

Field Investigations in Major Project Areas



22

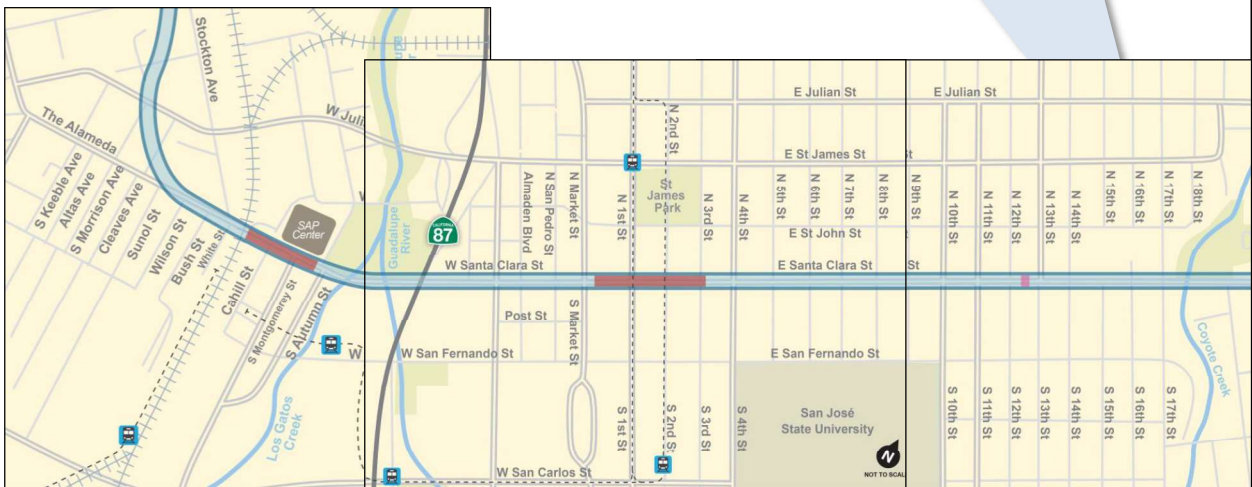
Field Investigations



Solutions that move you

13th Street Ventilation Facility Area

- Early December: Geotech investigations began
- Early January: Utility investigations begin



Diridon Station Area

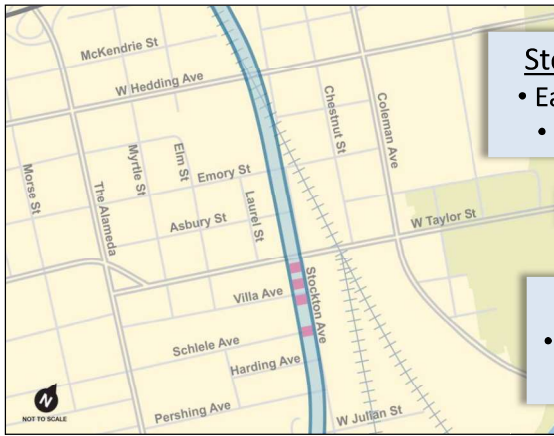
- Late October: Utility investigations began
- Late October: Geotech investigations began

Downtown San José Station Area

- Late September: Geotech investigations began
- Mid-January: Utility investigations begin



Solutions that move you

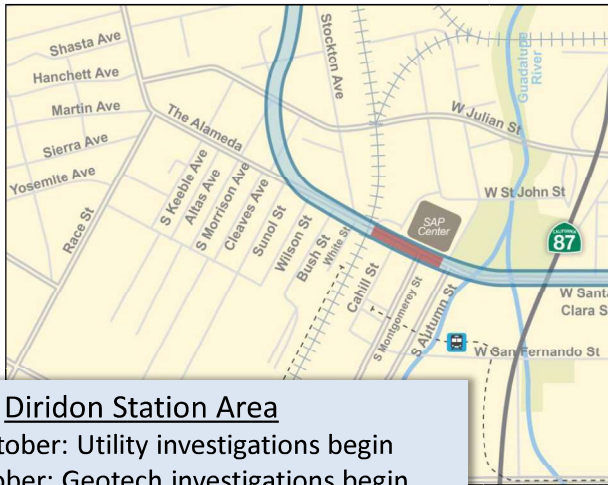


Stockton Avenue Ventilation Facility Area

- Early December: Geotech investigations begin
- Mid-December: Utility investigations begin

Downtown San José Station Area

- Late September: Geotech investigations began
- Mid-January: Utility investigations begin



Diridon Station Area

- Late October: Utility investigations begin
- Late October: Geotech investigations begin



25

Questions?

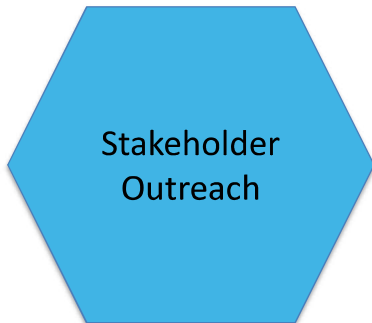


Community Education & Outreach Plan

Gretchen Baisa, VTA



27



Field Work Outreach

- Door to door outreach
- Targeted stakeholder outreach
- Community meetings attended:
 - San José Downtown Association
 - Delmas Park Neighborhood Association
 - Shasta Hanchett Park Neighborhood Association
 - East Santa Clara Street Business Association
 - District 6 Leadership Group
 - District 3 Downtown Construction Open House

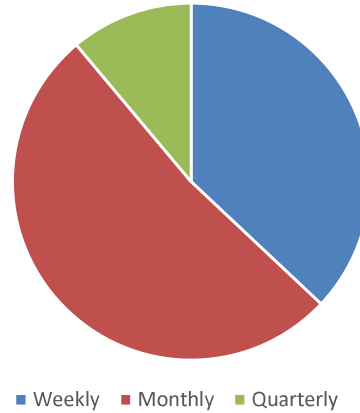


CWG Member Communication Survey

What format do you use to send information to your stakeholders?

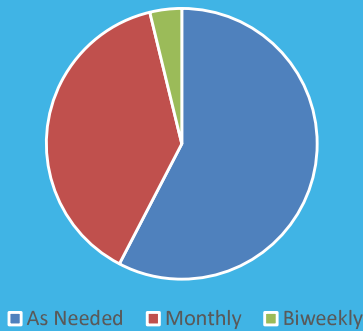
- Email Newsletter – 62.7%
- Presentations at Meetings - 61.5%
- Facebook – 50%
- Twitter – 23.1%
- Print Newsletter – 15.4%
- LinkedIn – 7.7%
- NextDoor – 7.7%

How often do you communicate with the group that you represent at the CWG?

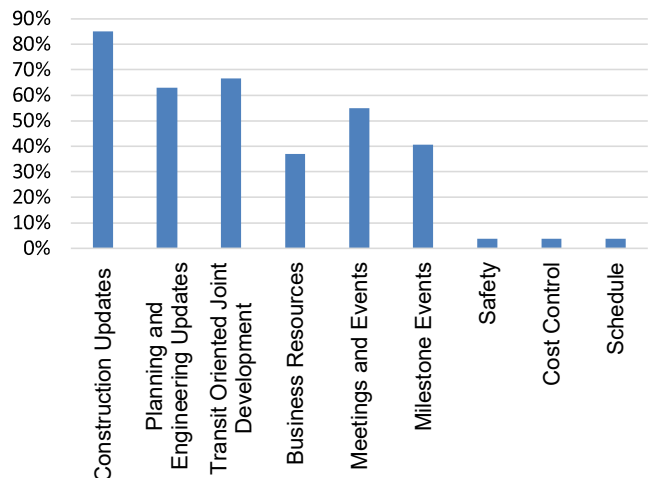


Keeping Stakeholders Informed

How often are you willing, or do you currently, transmit information to your stakeholders about VTA's BART Phase II project?



What area of the project do you feel is most relevant to your stakeholders?



Questions and Feedback



Solutions that move you 31

Real Estate Planning Process

Ron Golem, VTA



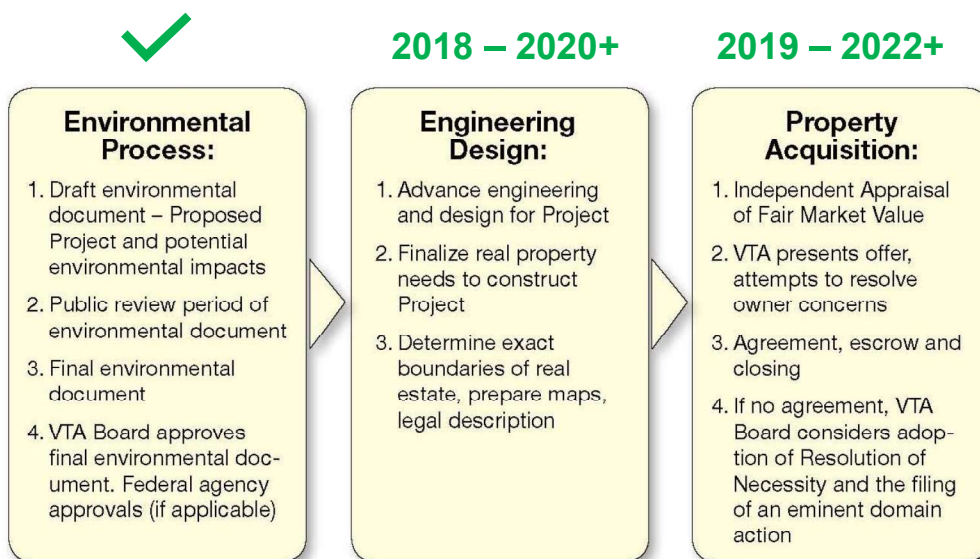
32

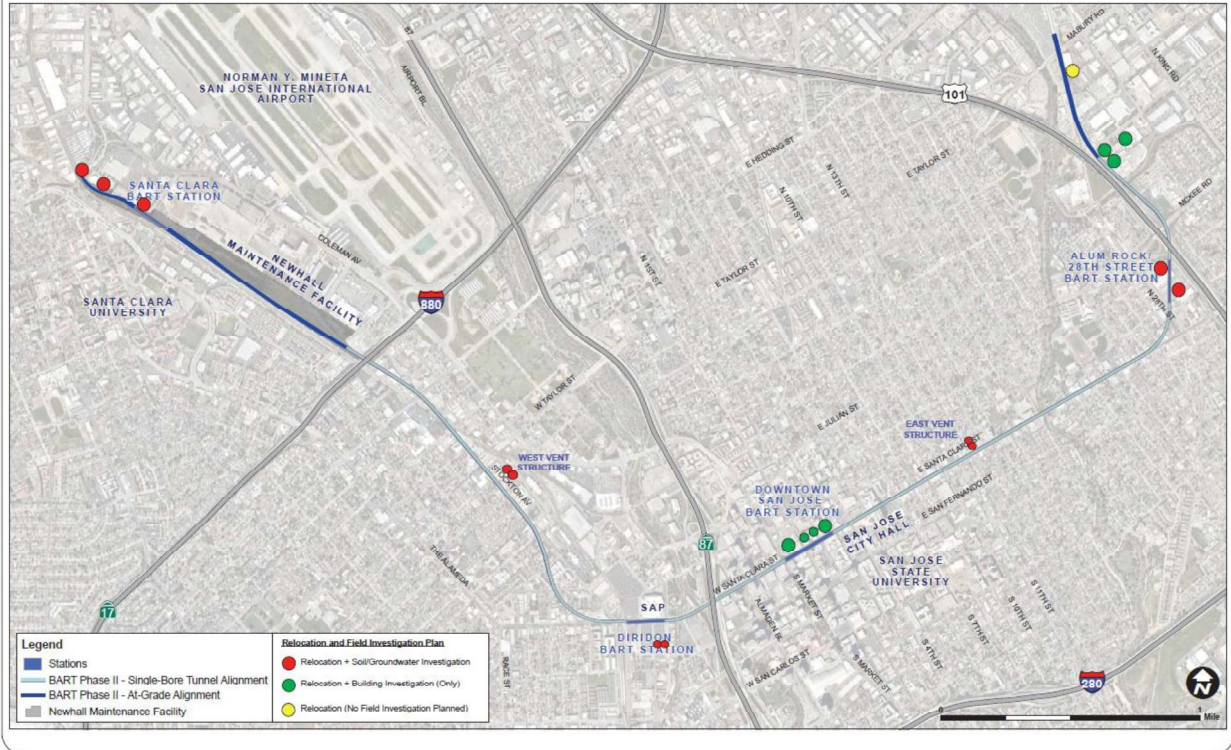
Real Estate Planning Process

- Acquisition Process and Schedule
- Current Work
- Key Elements
- Joint Development / Transit-Oriented Development (TOD)

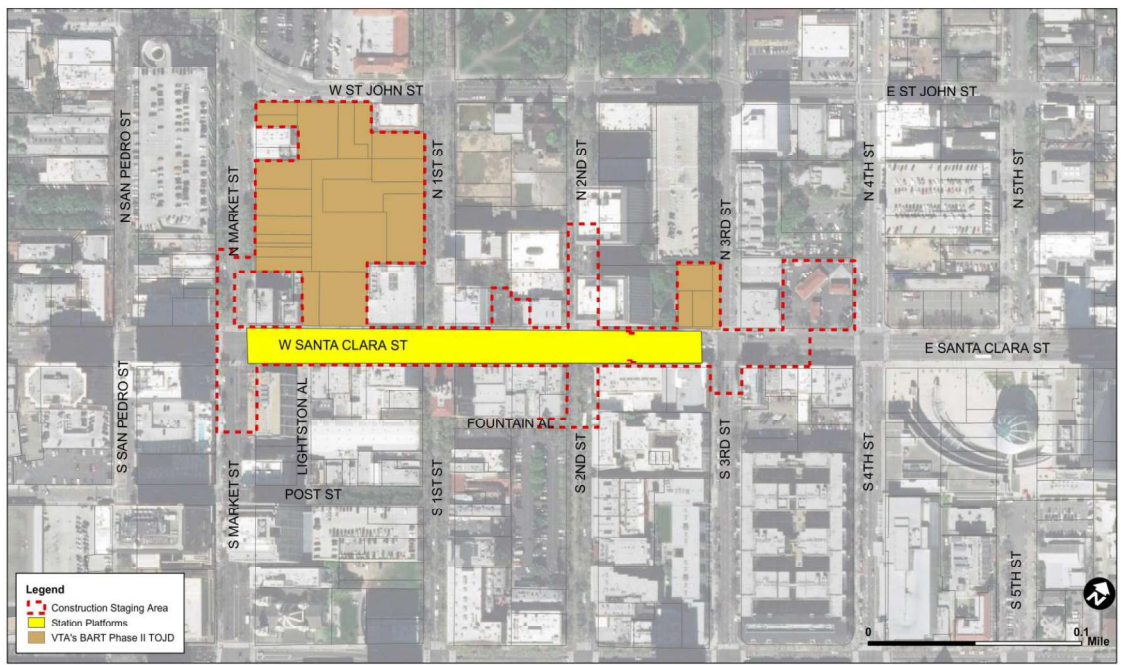


Real Estate Acquisition Process and Potential Schedule

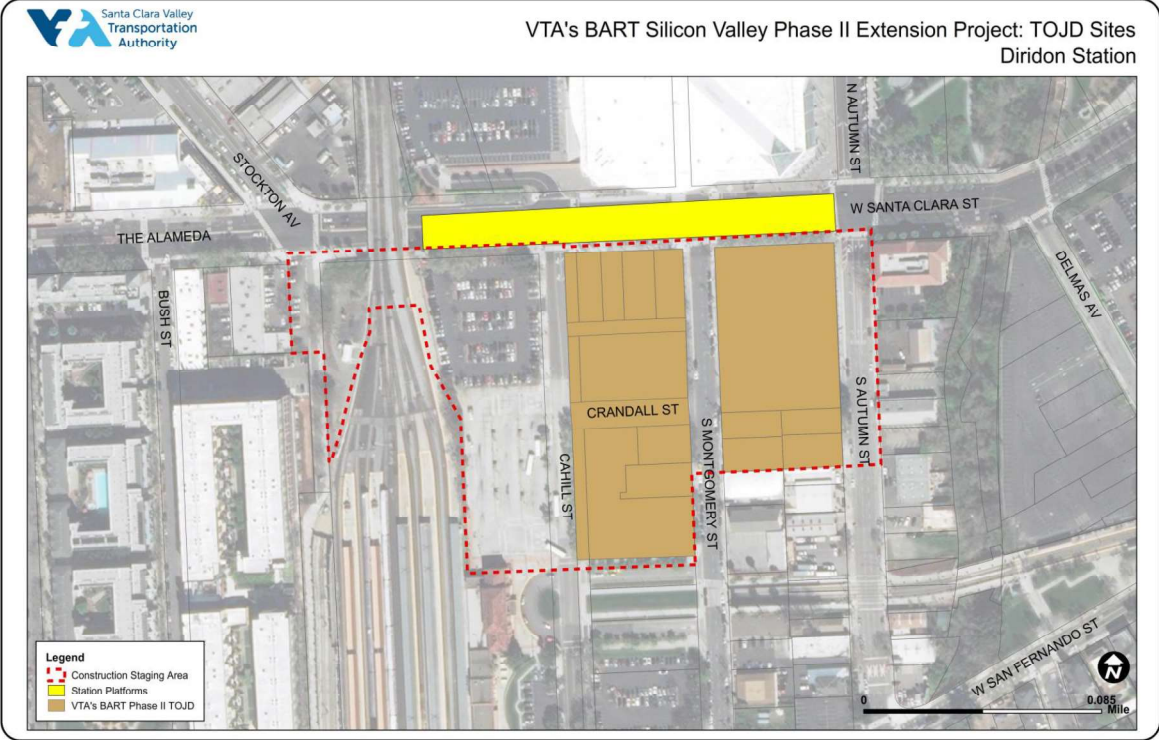




Downtown San José Station



Diridon Station



Solutions that move you

Key Elements



- Property Interests
 - Fee (ownership)
 - Permanent Easements
 - Temporary Construction Easements
- Tunnel Easements
- Schedule Driven



Solutions that move you

Joint Development: Transit-Oriented Development

- Construction Staging Areas: future sites for Joint Development (TOD)
- Start with adopted City plans
- Community engagement throughout
- Framework: VTA Board-Adopted Joint Development Policy
- Employment, mixed-use, destinations



Solutions that move you

39

Questions?

Ron Golem
Deputy Director,
Real Estate & Joint Development
408.321.5791
ron.golem@vta.org



San José Diridon Station Integrated Concept Plan

Dennis Kearney, VTA



41

San José Diridon Station Integrated Concept Plan

Purpose of the Concept Plan is to establish:

- A spatial configuration that provides seamless connections between transportation modes.
- A framework for creating a harmonious relationship between the station and surroundings.
- An effective organizational structure to deliver the vision.



San José Diridon Station Integrated Concept Plan

Project Kickoff: September 2018

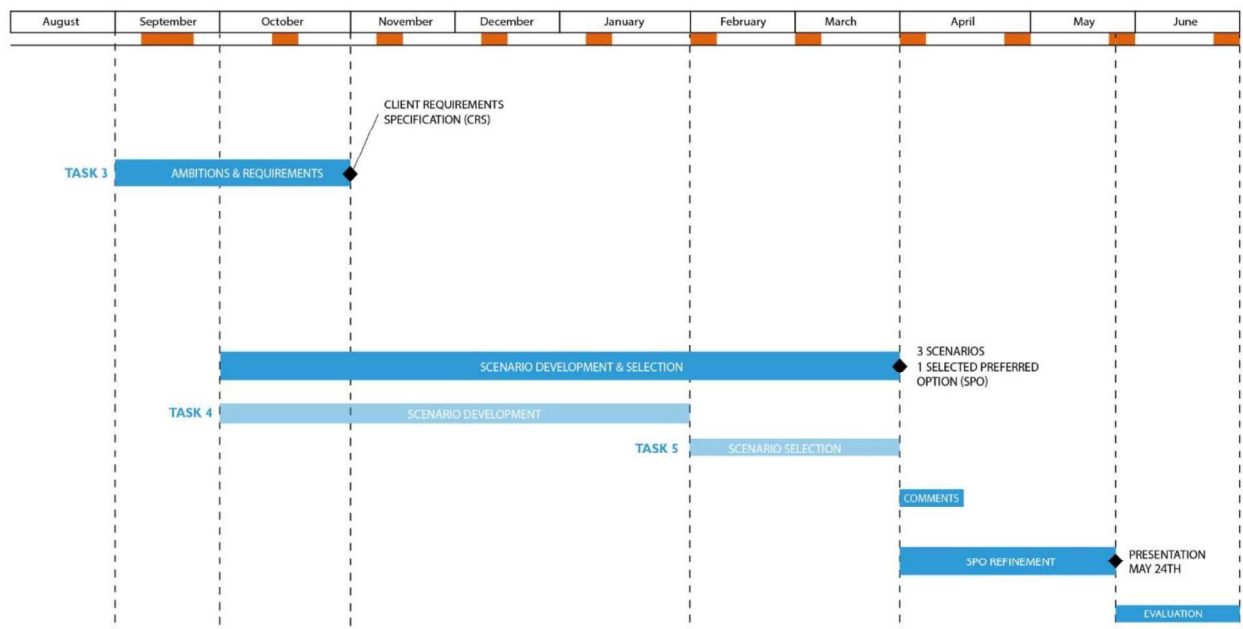
Phase I (10 months)

- Partner Agencies Ambitions & Requirements
- Technical Partner Workshops
- Develop Conceptual Scenarios
- Evaluation of Conceptual Scenarios
- Identify Single Preferred Option (SPO)
- SPO Refinement and Final Evaluation



San José Diridon Station Integrated Concept Plan

Phase I Schedule



San José Diridon Station Integrated Concept Plan

Proposed Engagement Activities

- Community Meetings
- Stakeholder Presentations
- Interviews with Community Leaders
- Outreach to Transit Riders
- Pop-up Booths at/near Diridon Station
- Online/Mobile Feedback Tools
- Advisory Group Meeting (SAAG)
- Policy Body Meetings



San José Diridon Station Integrated Concept Plan

Next Steps

- Joint Policy Advisory Board – *Dec 2018 or Jan 2019*
- Narrow 3 Concept Scenarios to a Single Preferred Option – *April 2019*
- Public Engagement – Consulting the Community – *Ongoing*
- Project Update at February 2019 CWGs



San José Diridon Station Integrated Concept Plan

- [Video of the SAAG meeting on October 18, 2018](#) - including a 30-minute background presentation on the Concept Plan beginning at 2:00
- [Draft Outreach Strategy](#) for the Diridon Integrated Station Concept Plan
- [Diridon Station Area Civic Engagement Report](#) (October 2018) –See the Desired Outcomes for Transportation, Design, Parking, and Environmental Sustainability
- [SJSU Preliminary Community Assessment of the Diridon Station Area](#) (October 2018)
- For questions, comments, or to request a Presentation to your organization contact Lori Severino at: lori.severino@sanjoseca.gov



Questions?



Transit Oriented Development Strategy & Access Planning Studies Update

Adriano Rothschild, VTA



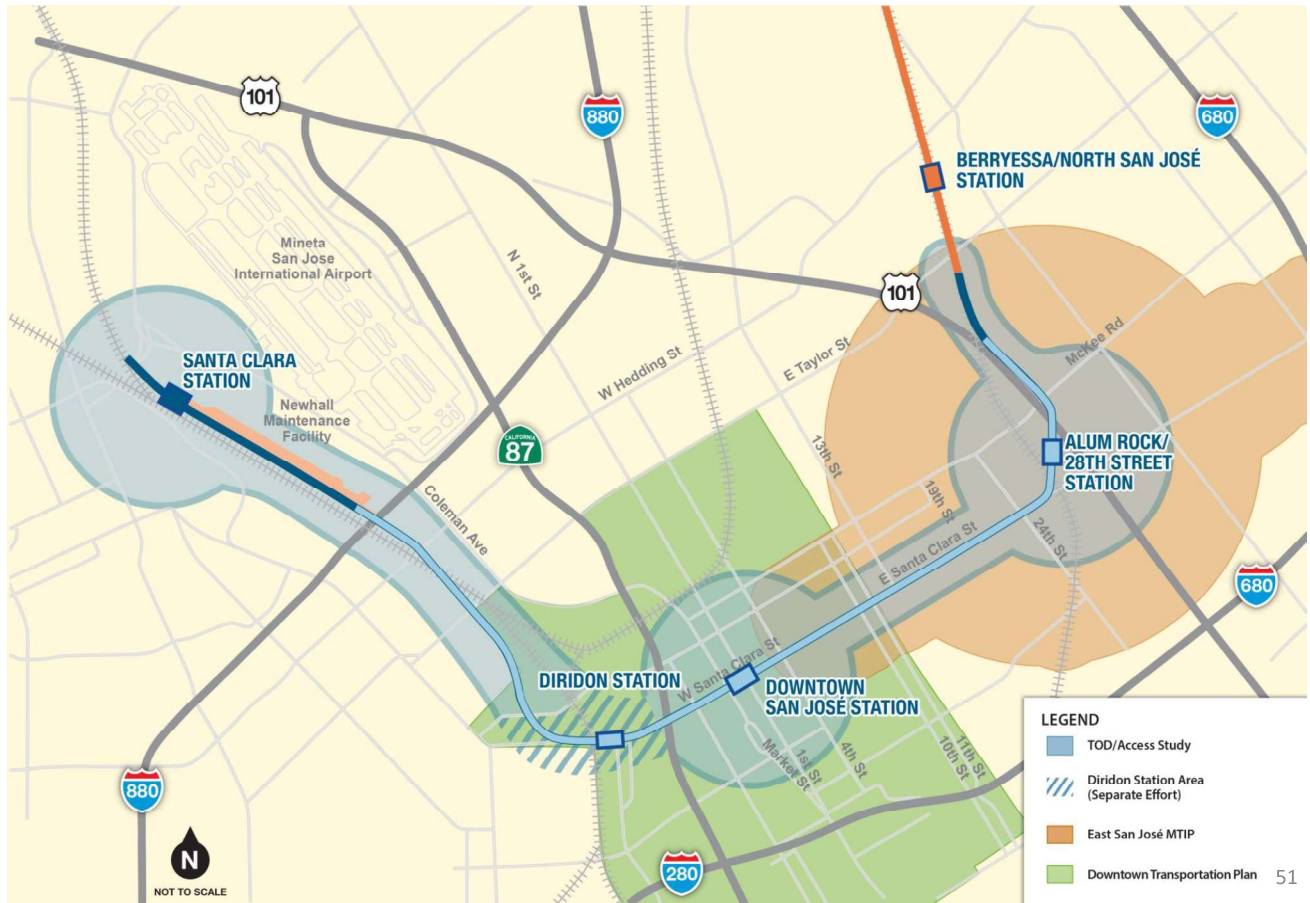
49

TOD Strategy and Access Planning Studies

- The TOD/Access Study includes an Access Planning Component
- These are strategies to facilitate access between future TOD and VTA's BART Stations
 - Identify needs for current and future access needs
 - Allow for funding strategy to include future access needs
 - Reserve corridors as priority access routes to stations
- The City of San José has two concurrent access and mobility planning efforts that compliment VTA's TOD/Access Study



TOD/Access Study and Concurrent Planning Efforts



Access Planning Update: Downtown San José Station

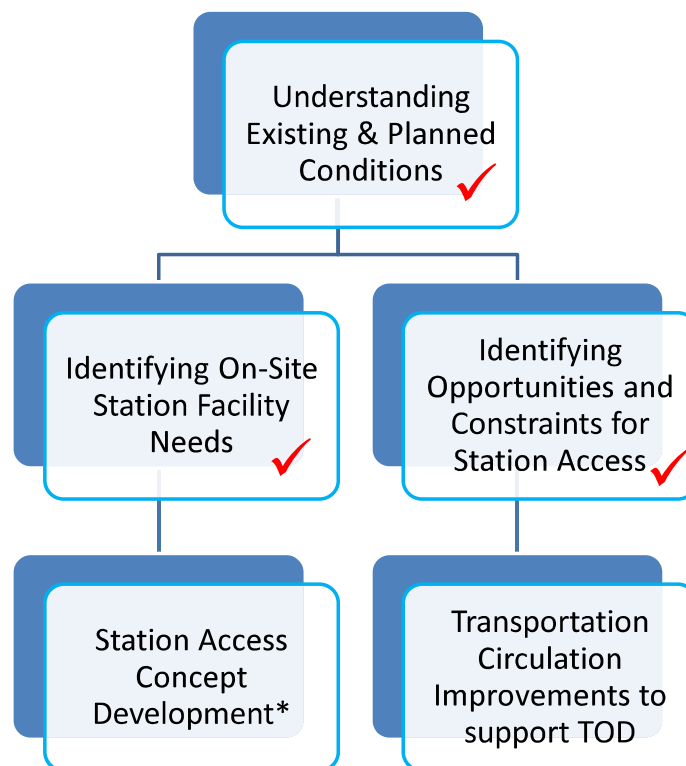
Adam Dankberg, P.E., Kimley-Horn

Access Study Objectives

- Identify transportation improvements, guidelines, and policies to support and encourage TOD in and around the station areas
- Provide for station access that promotes ridership, supports a cohesive transportation network, and integrates with surrounding neighborhoods



Access Study Process



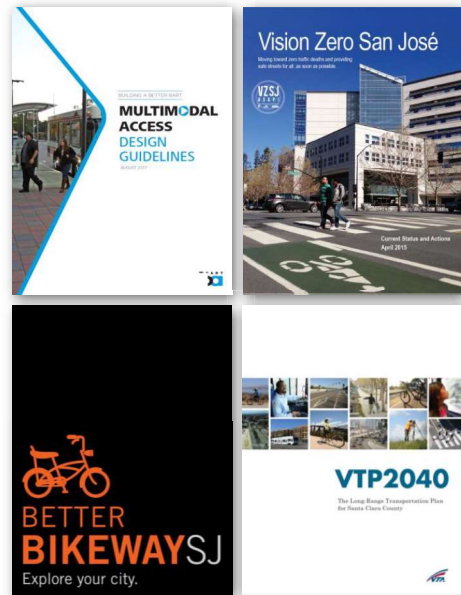
*To Be Completed in Subsequent Efforts

We are here

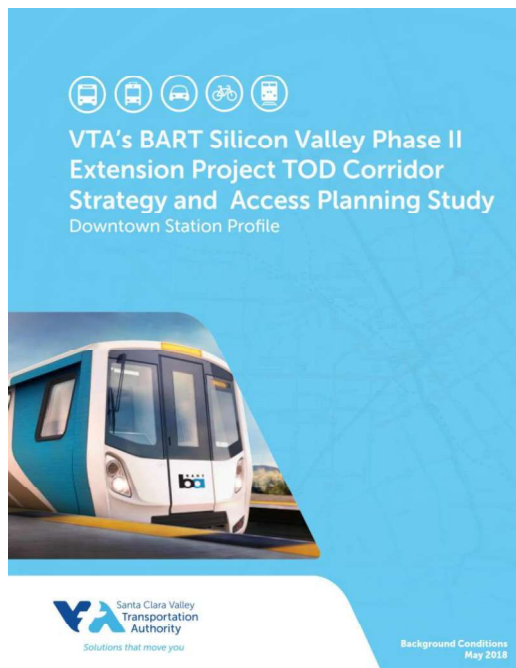


Review of Key Guiding Policies/Documents

- City of San Jose's BART Station Access Planning Final Report
- BART Station Access Policy
- BART Multimodal Access Design Guidelines
- Vision Zero San José
- San José Complete Streets Guidelines
- Envision 2040 General Plan
- VTA Complete Streets Policy
- VTA Countywide Bike Plan
- VTA Pedestrian Access to Transit Plan
- Valley Transportation Plan 2040
- Park Paseo
- Better Bikeways



Station Profile



- Report that summarizes the transportation characteristics of each station area
- Summarize existing and planned:
 - Pedestrian network
 - Bicycle network
 - Auto network
 - Transit network
 - Curb management
- Identification of key access considerations
 - Interaction of modes
 - Gaps in connectivity
 - Primary access pathways



Key Considerations for Downtown San Jose Station Area

- Curb management practices
- Connections between station entrances and nearby LRT/BRT/Bus stations
- Enhanced wayfinding

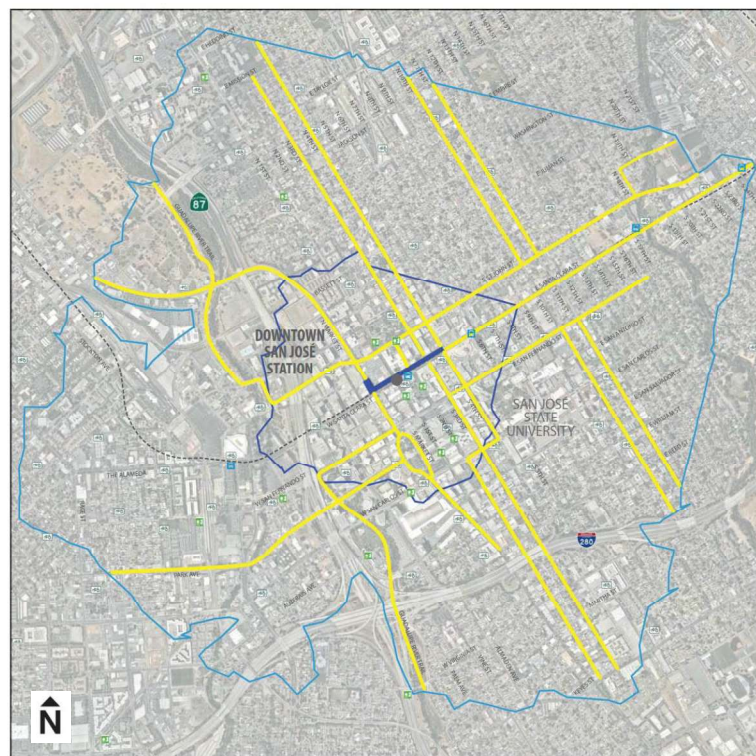


Measures to Address Gaps in Transportation Network

12 access routes

LEGEND

-  Downtown San José Station Access Route
-  0.5 mile walkshed (10 min walk)
-  1.5 mile bikeshed (10 min bike ride)
-  VTA's BART Phase II Extension Alignment
-  Existing VTA BRT Stops
-  Existing VTA LRT Stops
-  Existing Ford GoBike Stations



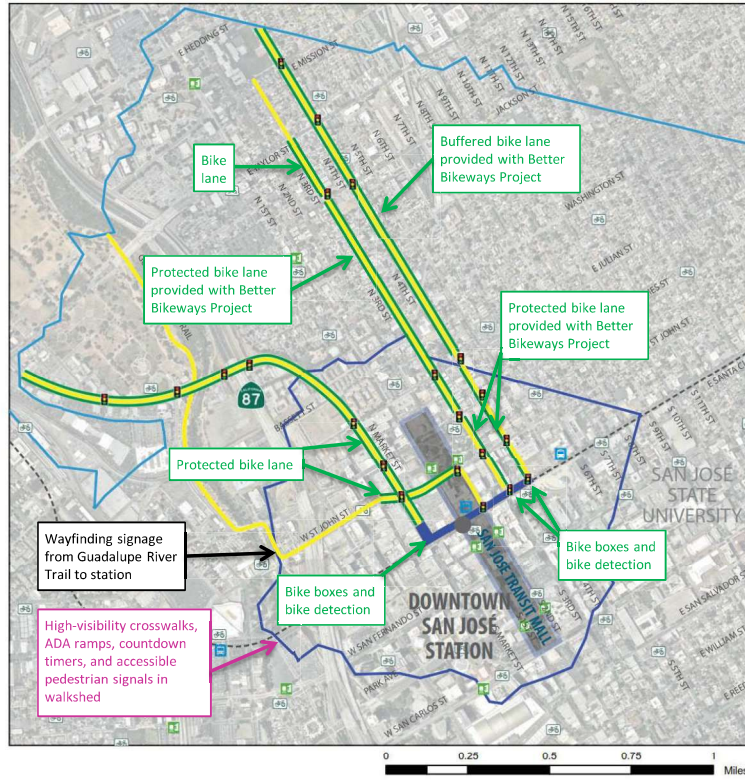
Measures to Address Gaps in Transportation Network - North

Key Map



LEGEND

- Downtown San José Station Access Route
- 0.5 mile walkshed (10 min walk)
- 1.5 mile bikeshed (10 min bike ride)
- VTA's BART Phase II Extension Alignment
- Existing VTA BRT Stops
- Existing VTA LRT Stops
- Existing Ford GoBike Stations
- Pedestrian recommendation
- Bicycle recommendation
- Wayfinding recommendation



Solutions that move you

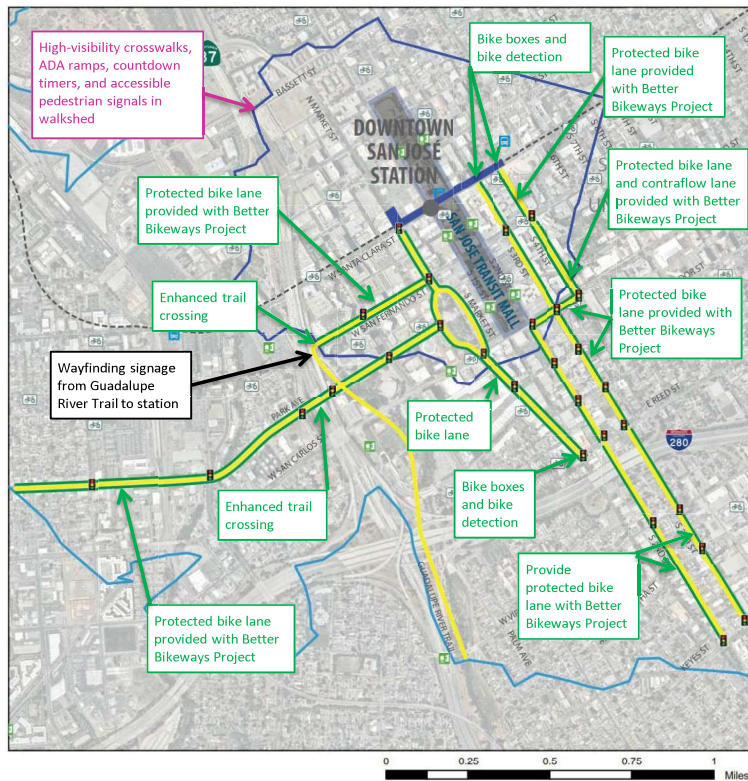
Measures to Address Gaps in Transportation Network - Southwest

Key Map



LEGEND

- Downtown San José Station Access Route
- 0.5 mile walkshed (10 min walk)
- 1.5 mile bikeshed (10 min bike ride)
- VTA's BART Phase II Extension Alignment
- Existing VTA BRT Stops
- Existing VTA LRT Stops
- Existing Ford GoBike Stations
- Pedestrian recommendation
- Bicycle recommendation
- Wayfinding recommendation



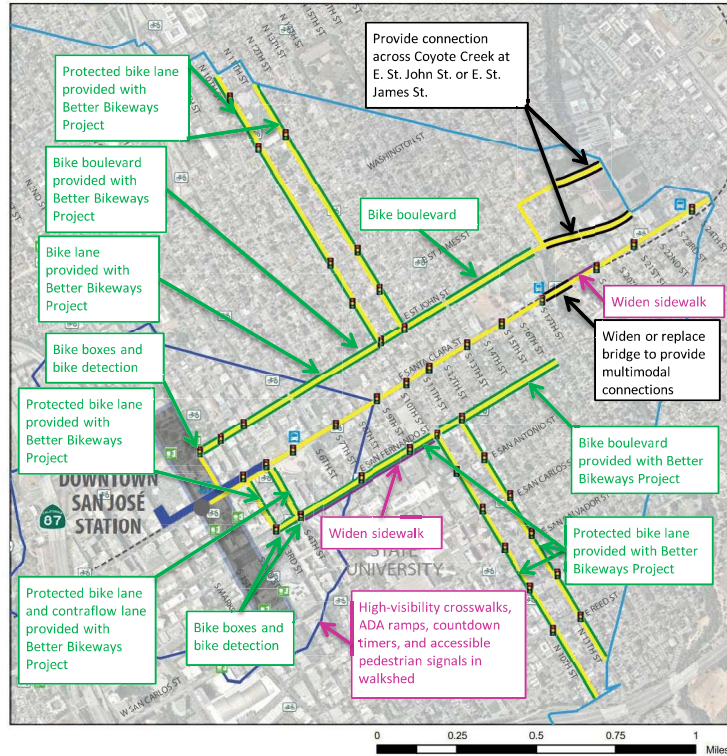
Solutions that move you

Measures to Address Gaps in Transportation Network - East

Key Map



- Downtown San José Station Access Route
- 0.5 mile walkshed (10 min walk)
- 1.5 mile bikeshed (10 min bike ride)
- VTA's BART Phase II Extension Alignment
- Existing VTA BRT Stops
- Existing VTA LRT Stops
- Existing Ford GoBike Stations
- Pedestrian recommendation
- Bicycle recommendation
- Connection or structure recommendation



Solutions that move you

Next Steps

- Update station profiles to include on-site facility needs and access pathway opportunities and constraints
- Refine concepts for recommended network improvements
- Expand upon recommendations to integrate TOD opportunity sites
- Return to April CWG to present final project recommendations



Solutions that move you

Questions?



Solutions that move you

63

Next Steps

Eileen Goodwin, Facilitator



Solutions that move you

64

Next Steps

- Next CWG meeting:
 - Tuesday, February 5, 2019, 4:00-6:00 PM
 - San Jose City Hall Wing 118/119 200 E Santa Clara St, San Jose, CA 95113
 - Government Affairs Update
 - Phase II Update
 - Transit Oriented Development Strategy & Access Planning Studies Update
 - Construction Education & Outreach Plan
 - Diridon Integrated Station Concept Plan
 - VTA's Process for Station Naming
 - Caltrain Electrification Update
- Action Items
- Parking Lot Items

