

Appendix G

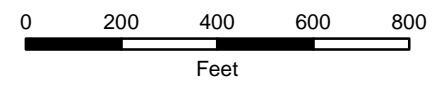
Maps of Areas of Potential Effects

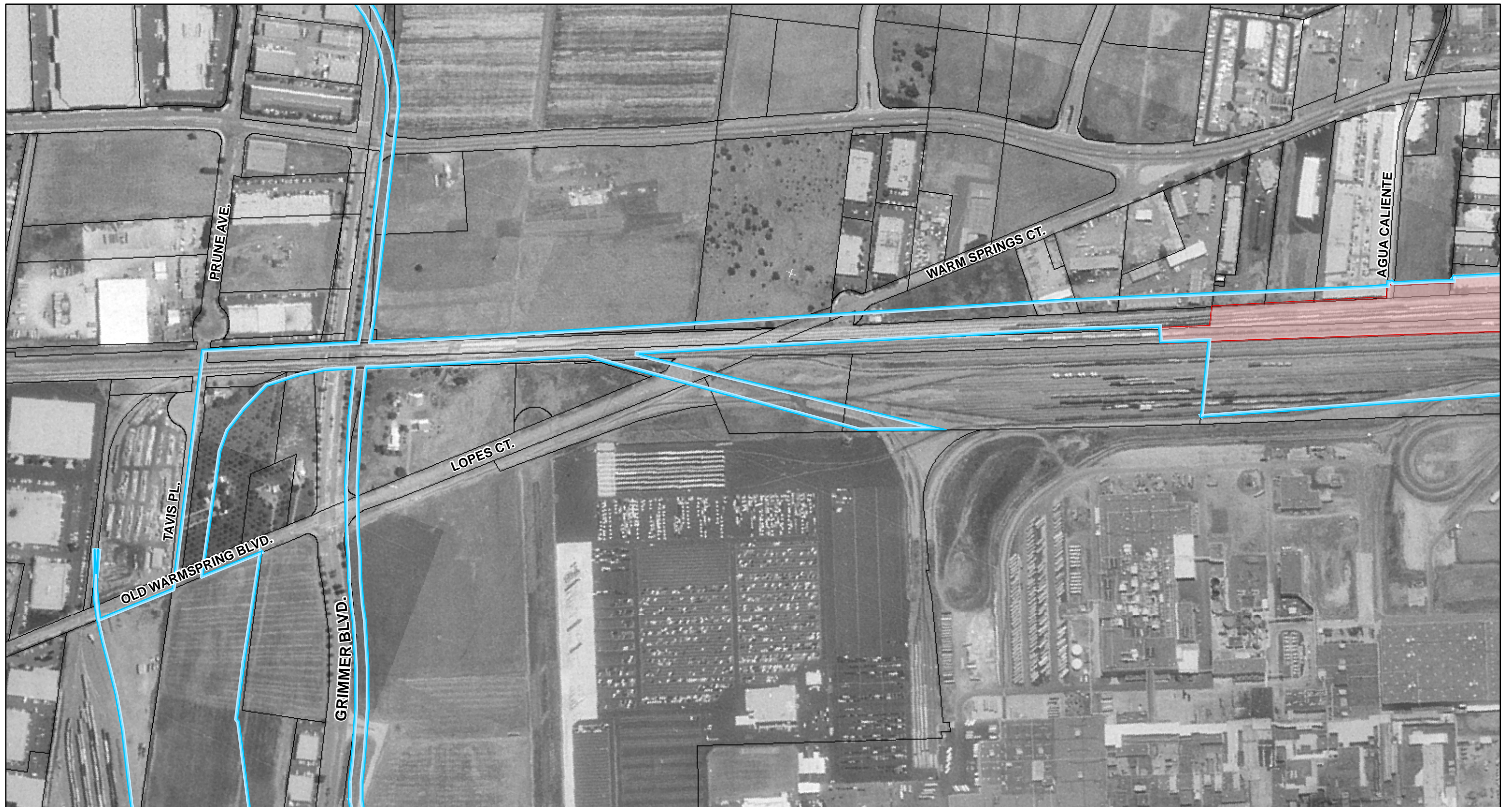
Archaeological

Map of Area of Potential Effects

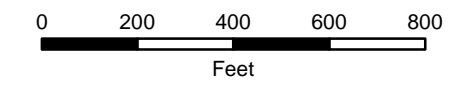


- Archaeological APE
- Known and Potential Archaeological Sites
- HR = Location of Potential Historical Resources**
- Archaeological Study Area
- Archaeological Site (Area)
- Boreholes





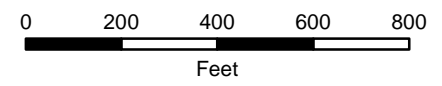
- Archaeological APE
- Archaeological Study Area
- Boreholes
- Known and Potential Archaeological Sites
- Archaeological Site (Area)
- HR = Location of Potential Historical Resources**

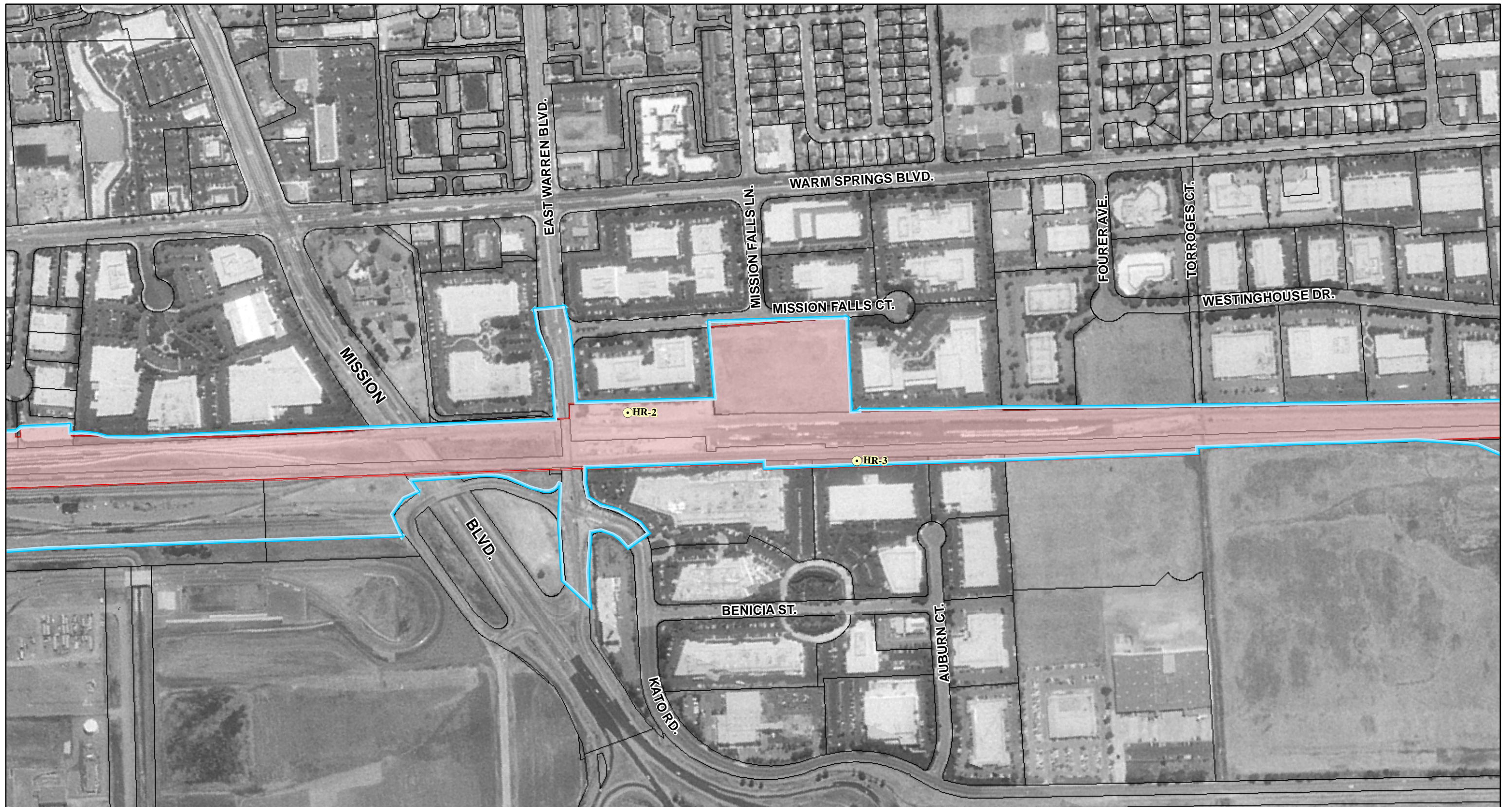




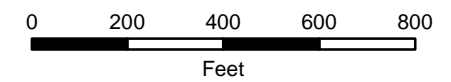


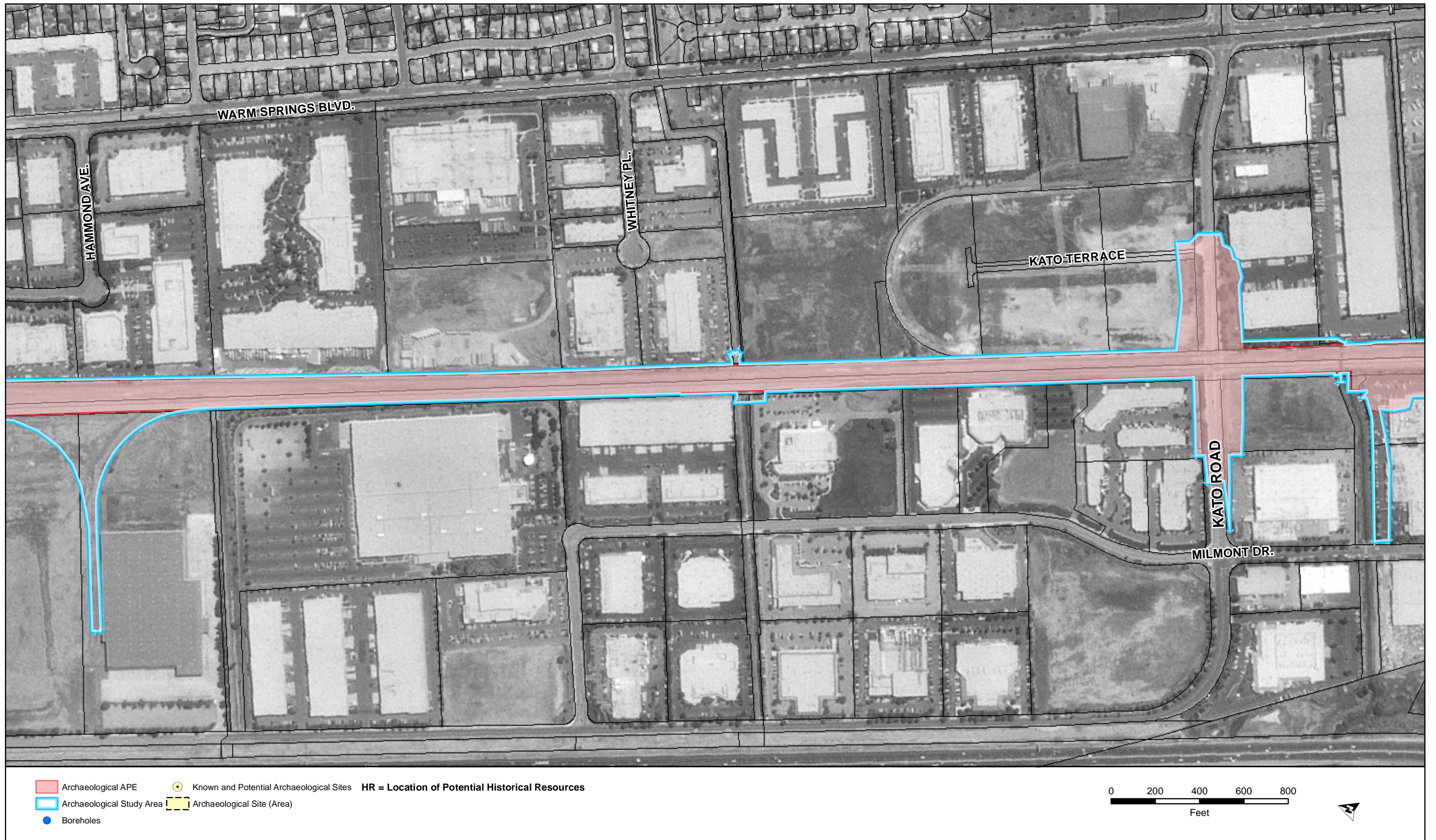
■ Archaeological APE
 ● Known and Potential Archaeological Sites
 HR = Location of Potential Historical Resources
 Archaeological Site (Area)
● Boreholes

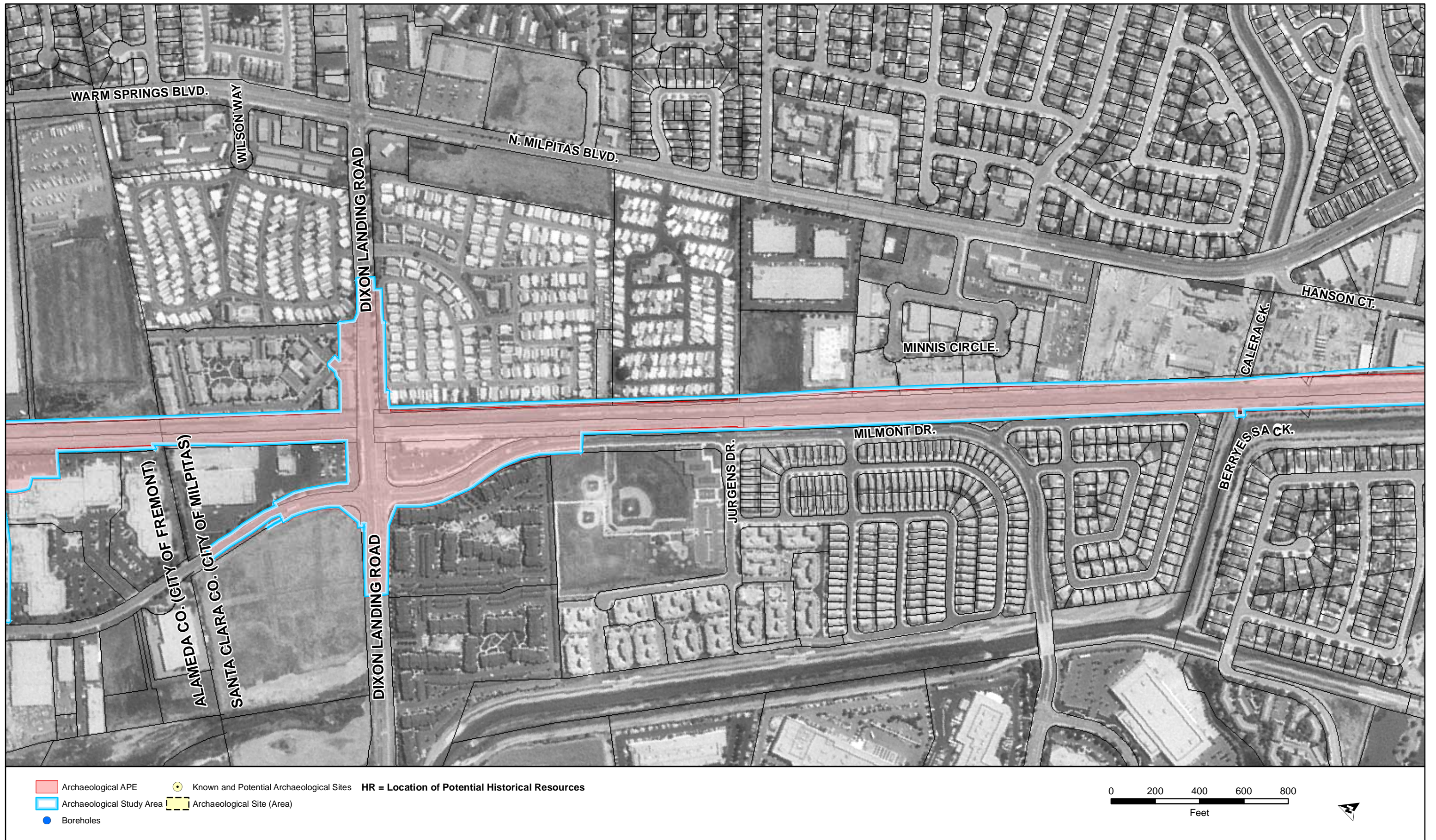


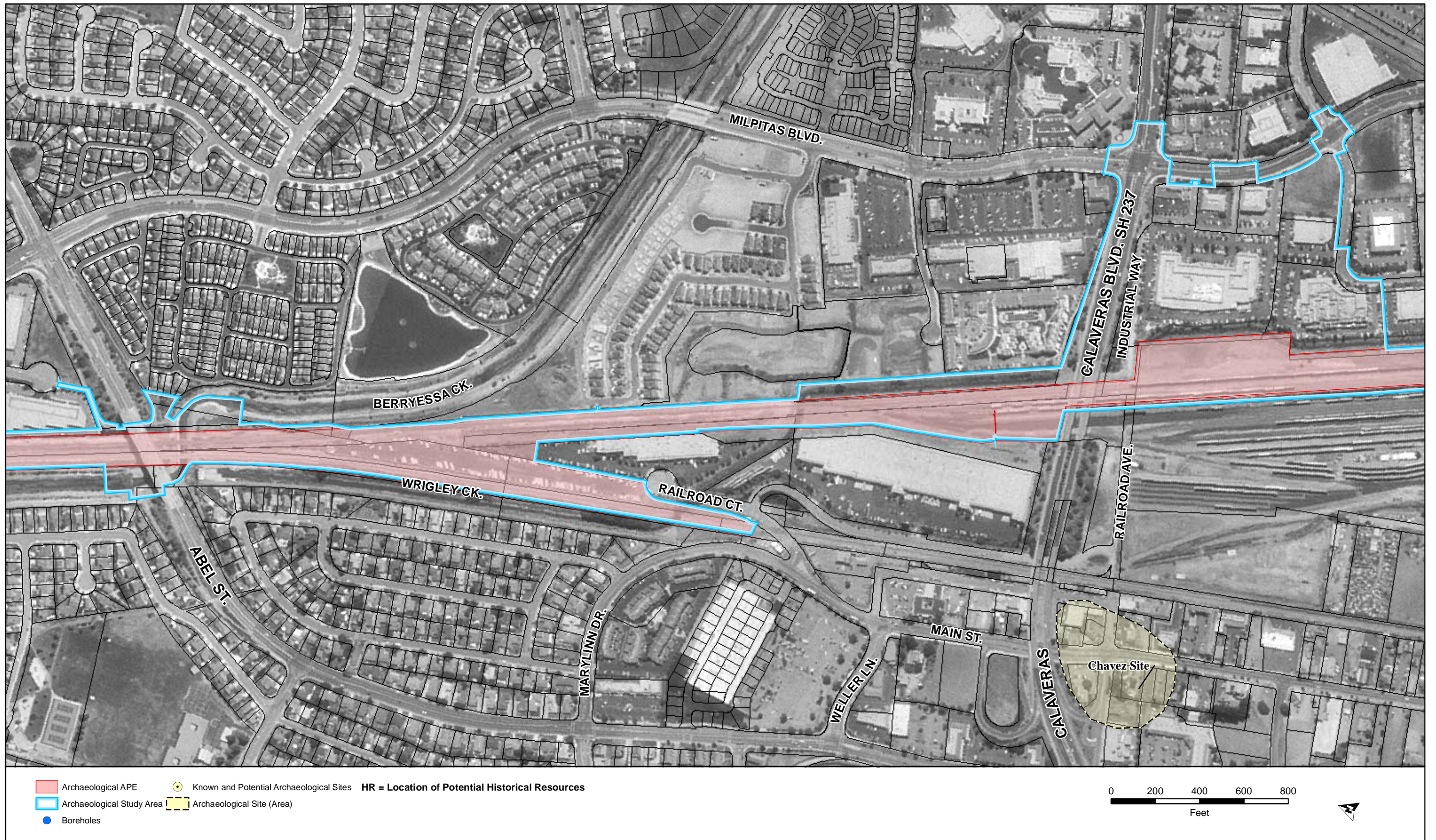


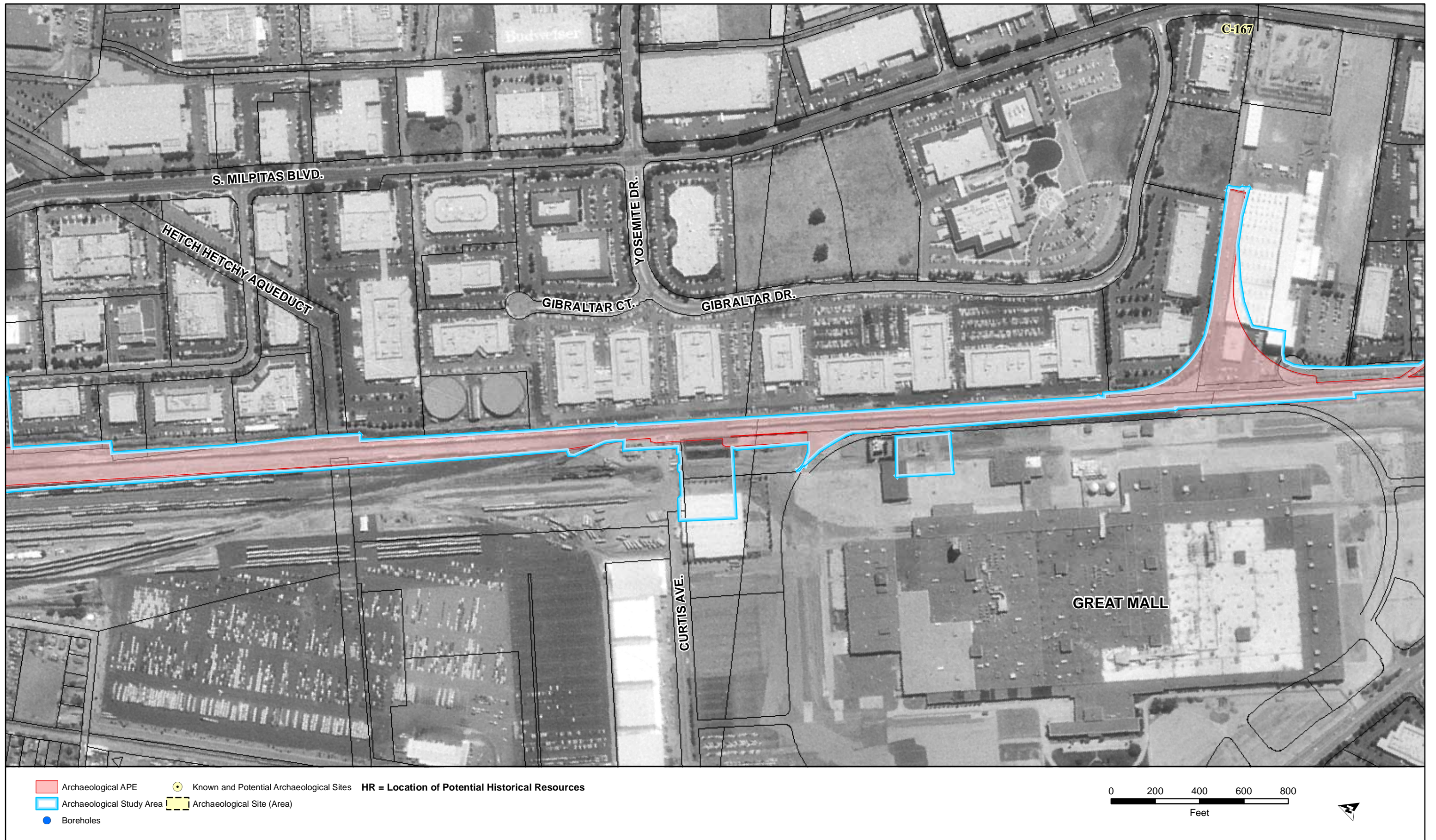
- Archaeological APE
- Known and Potential Archaeological Sites
- HR = Location of Potential Historical Resources**
- Archaeological Study Area
- Archaeological Site (Area)
- Boreholes

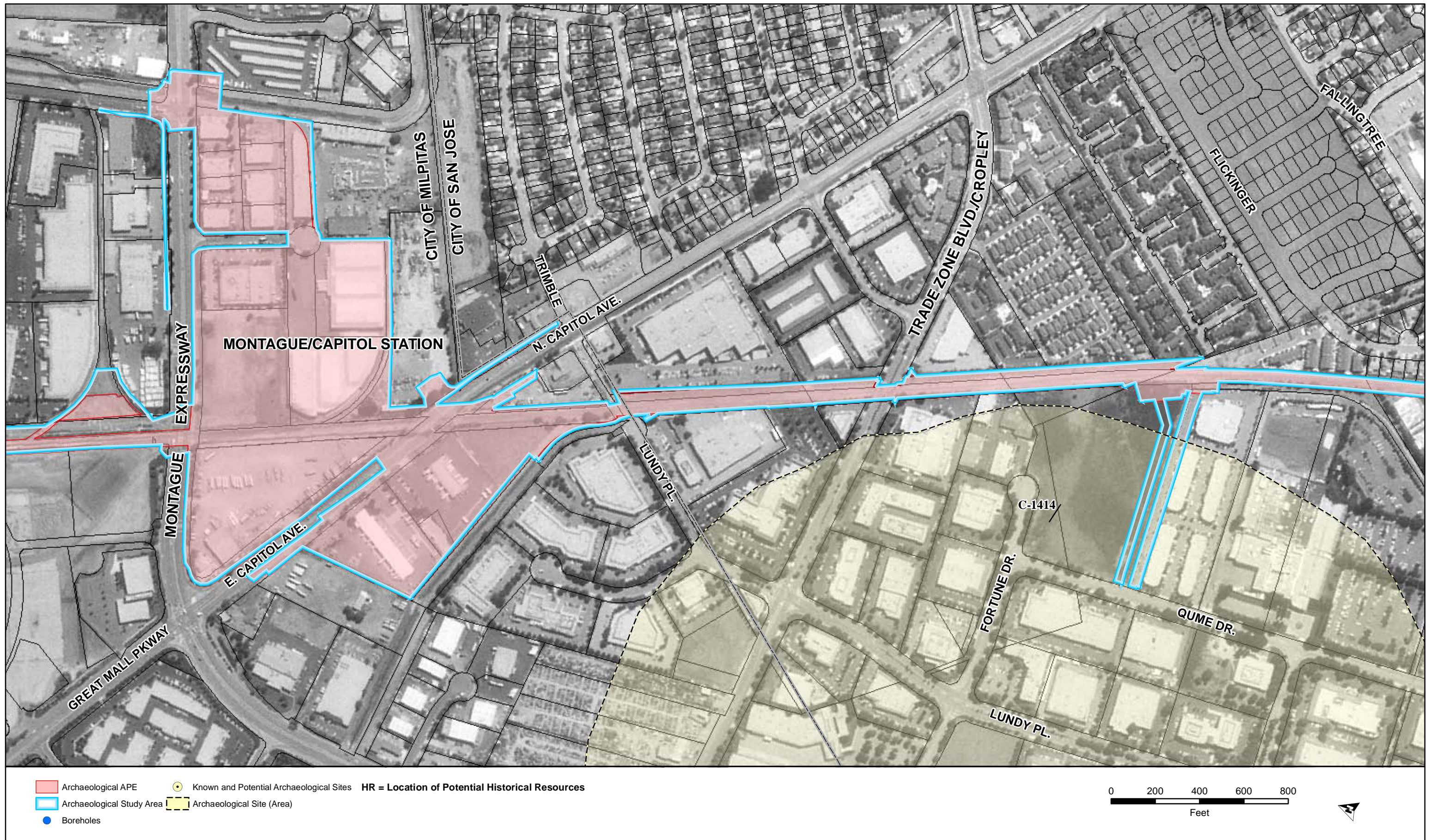


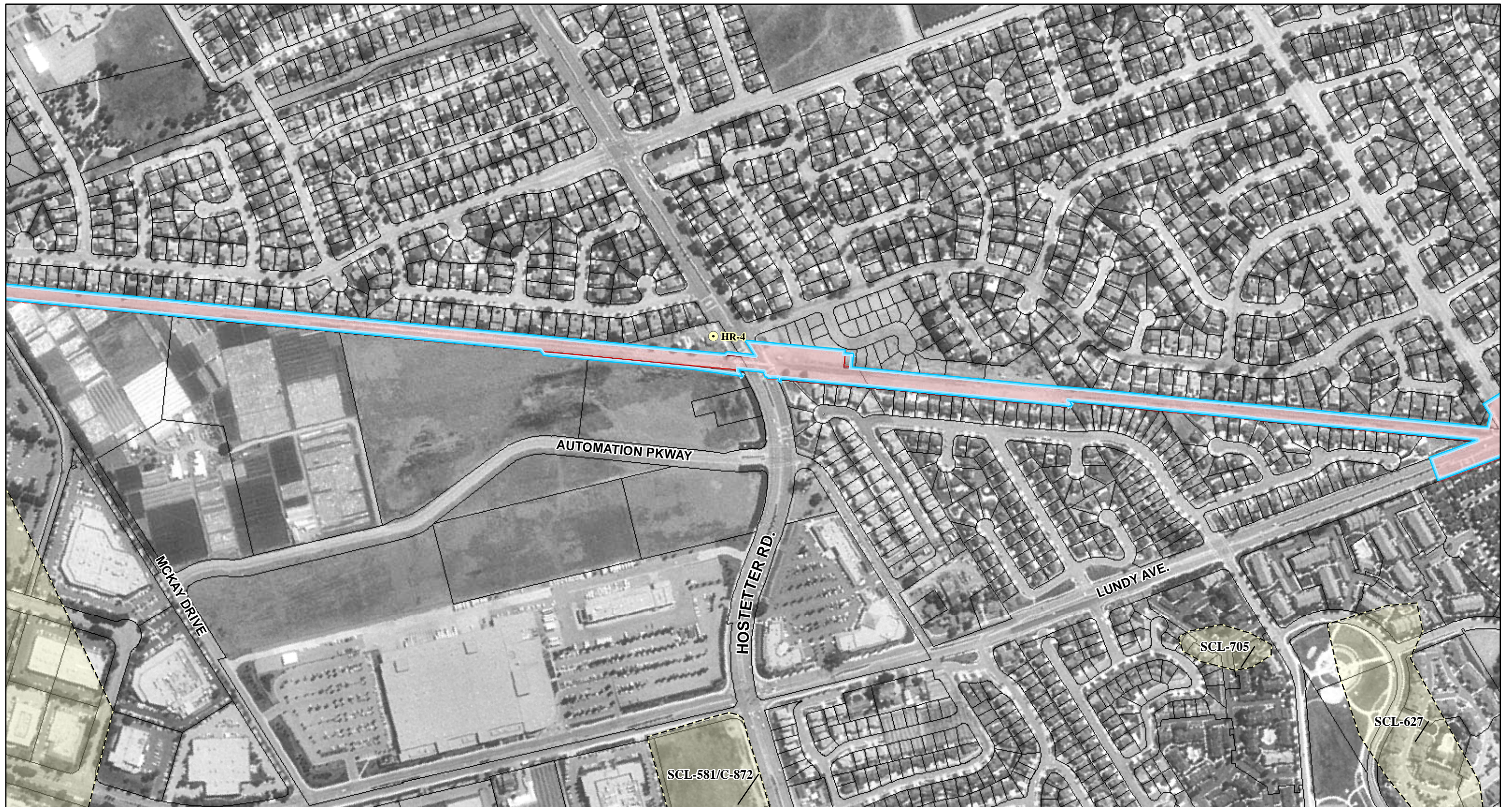




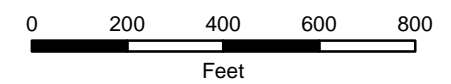




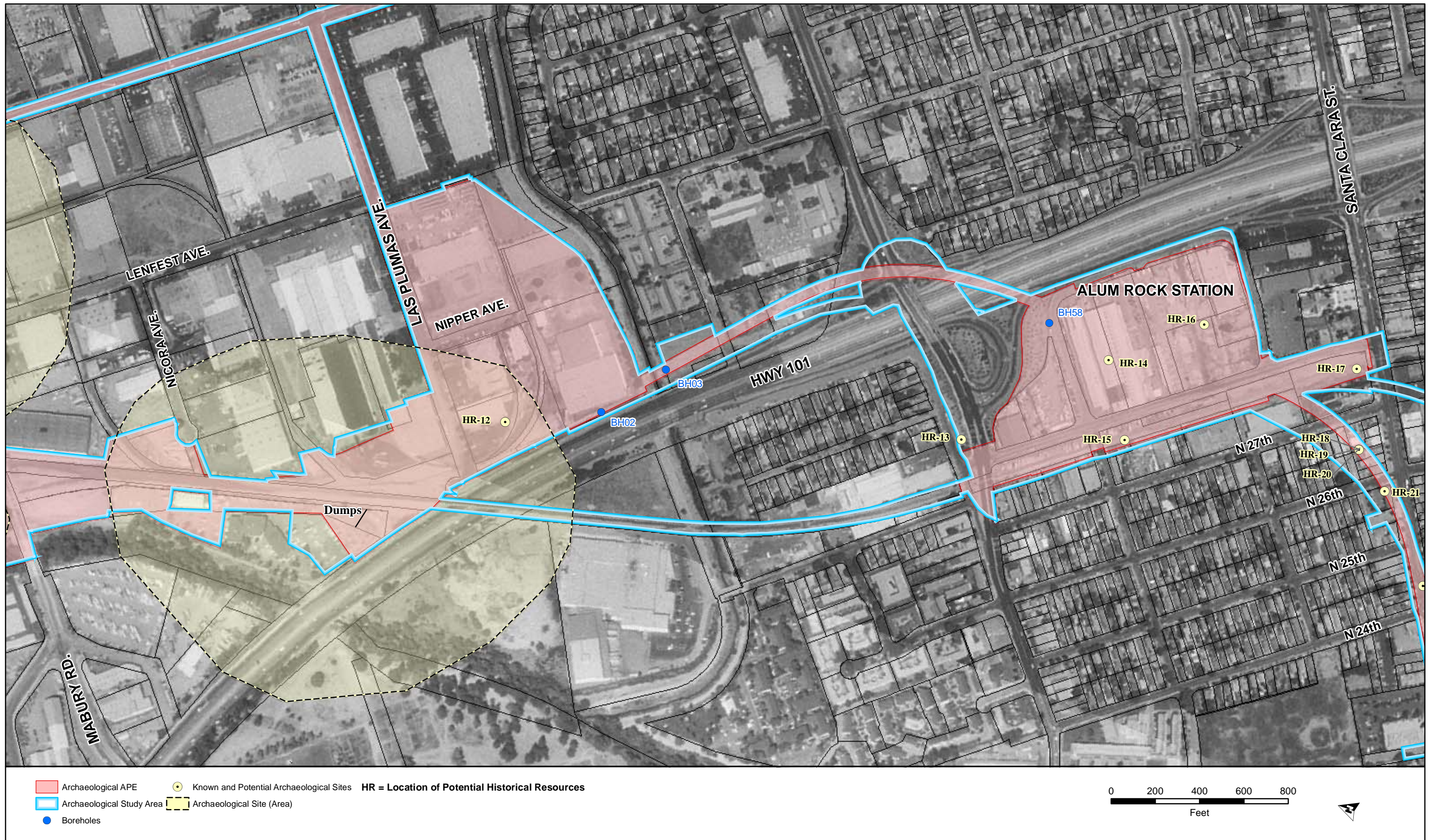




■ Archaeological APE
 ● Known and Potential Archaeological Sites
 HR = Location of Potential Historical Resources
 Archaeological Study Area
 Archaeological Site (Area)
● Boreholes



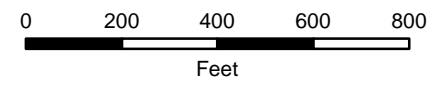


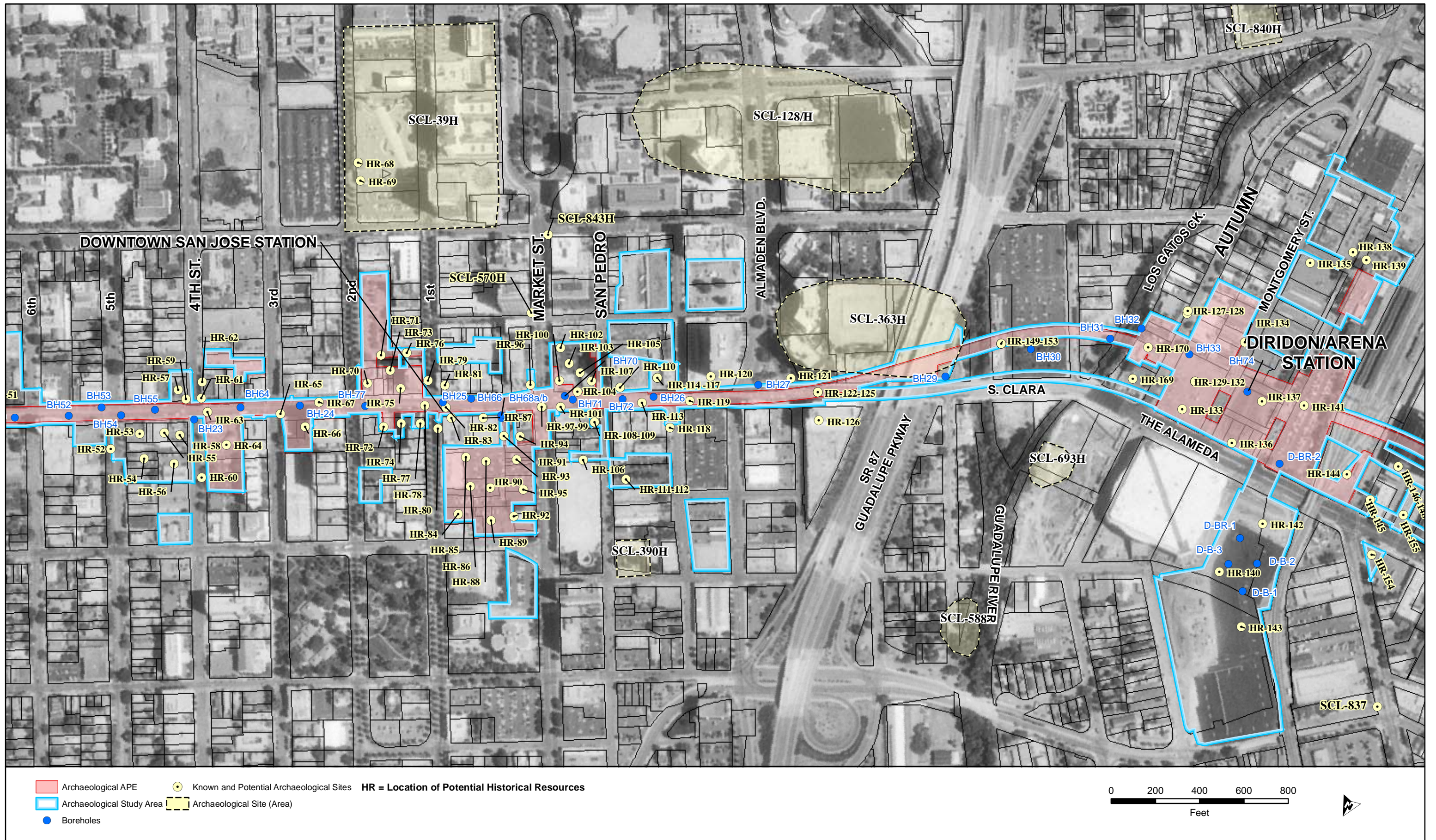


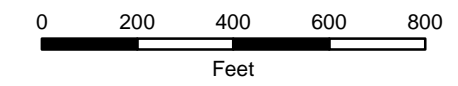
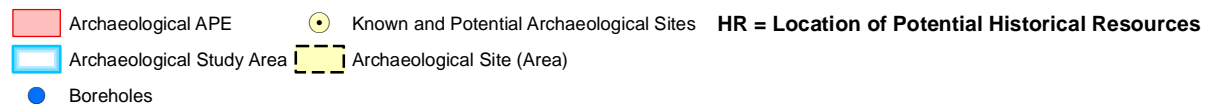
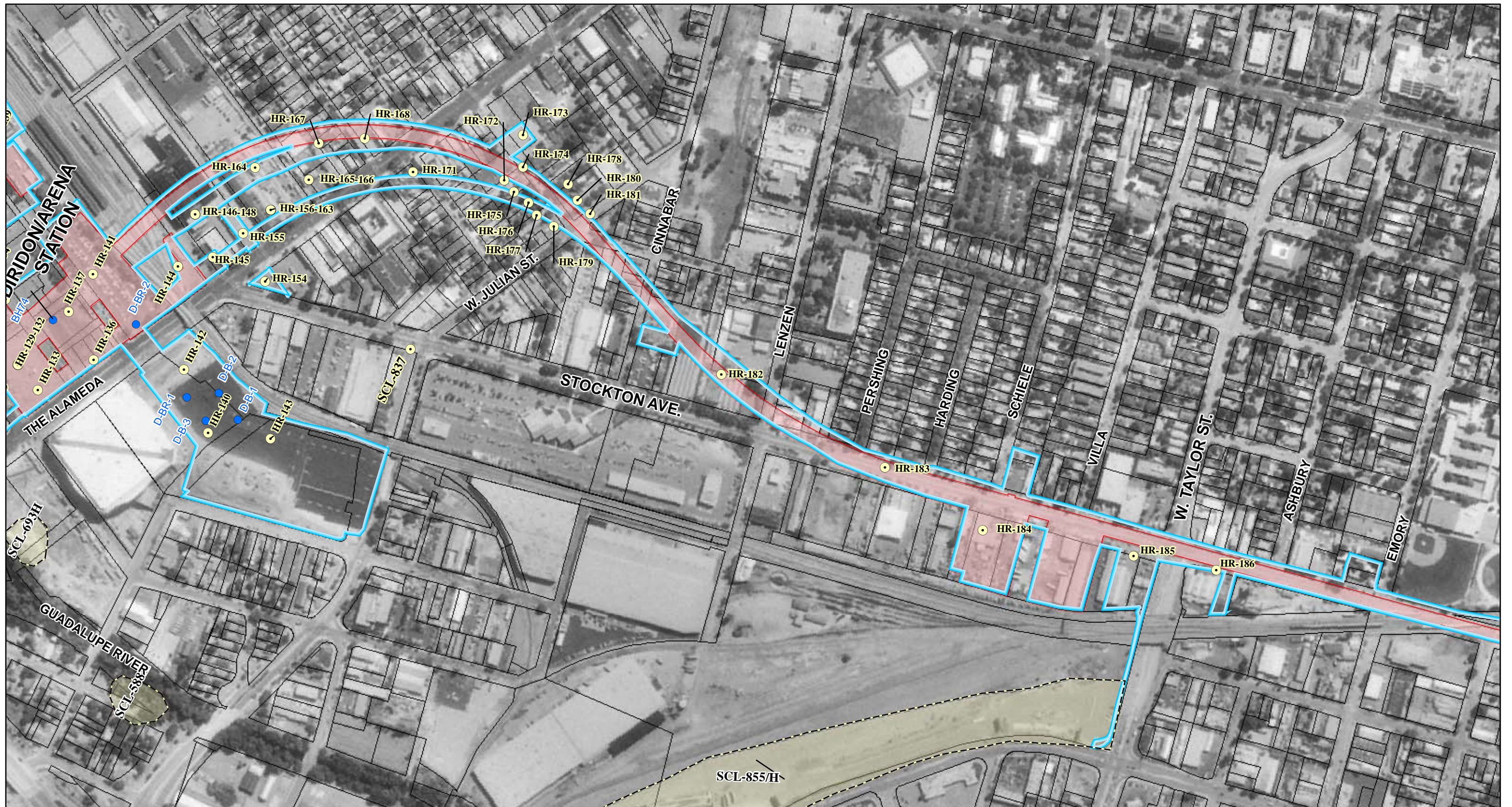


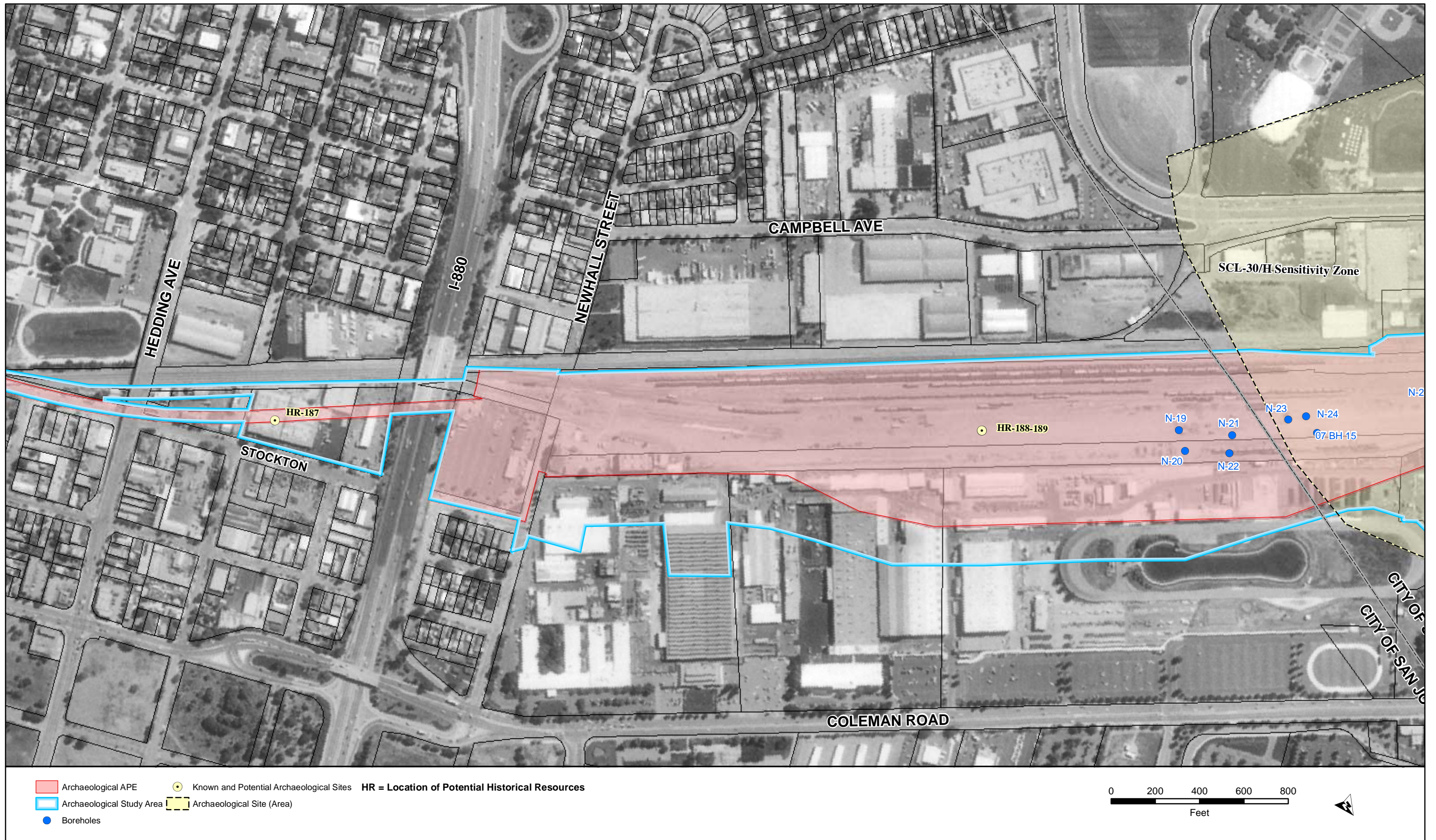


Archaeological APE
 Archaeological Study Area
 Archaeological Site (Area)
 Known and Potential Archaeological Sites
 Boreholes
 HR = Location of Potential Historical Resources









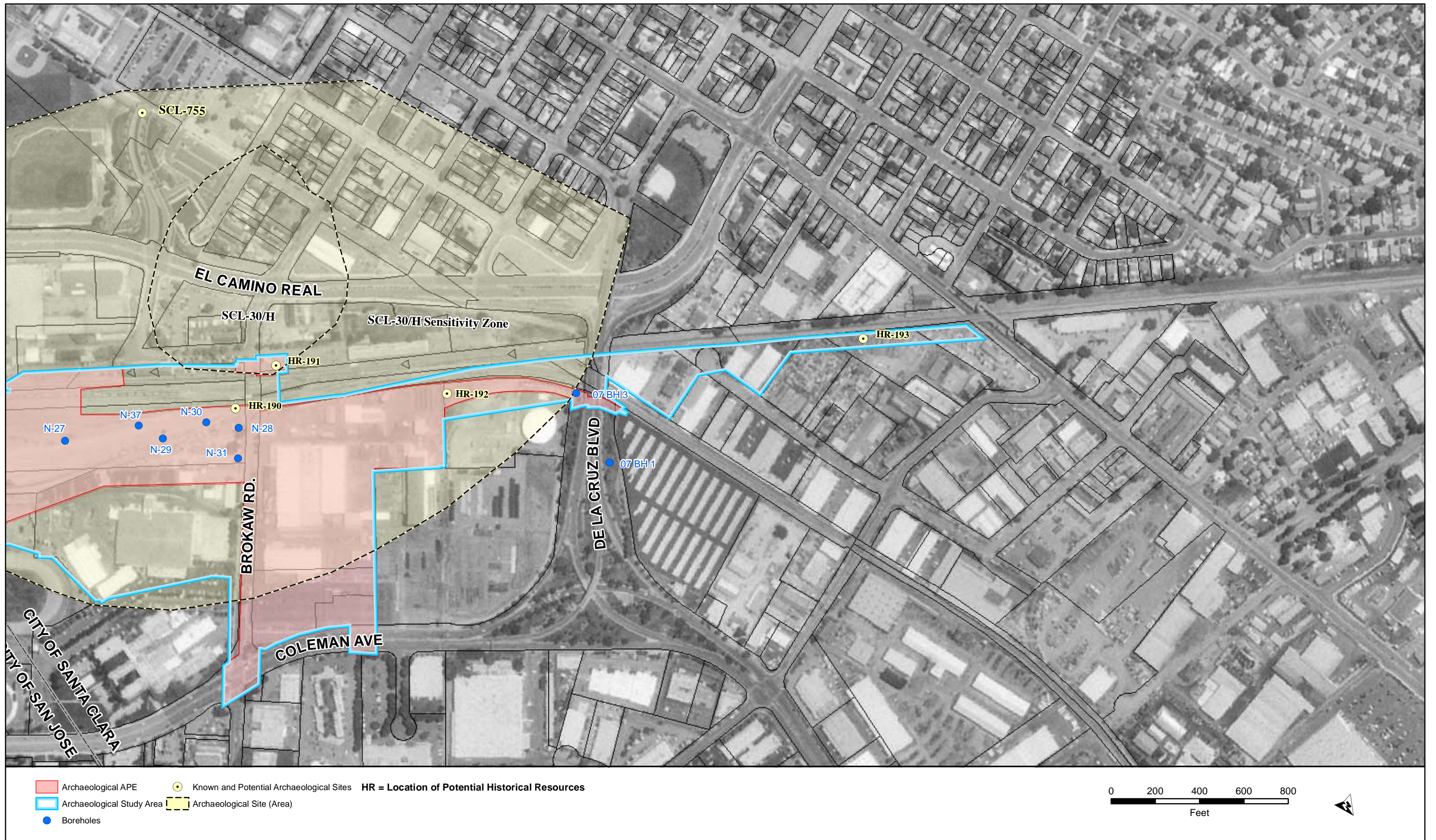




Figure 23. Archaeological Study Area and Area of Potential Effects (20 of 20).

Historic Architectural

Map of Area of Potential Effects

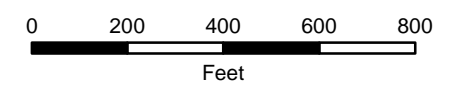


Resources (National Register Status)

- Eligible or listed historic property/historical resource
- Not eligible for NRHP or CRHR

 Architectural APE

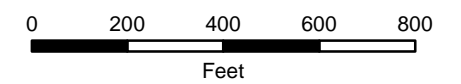
Figure 3.1. Addendum APE for Historic Architecture.

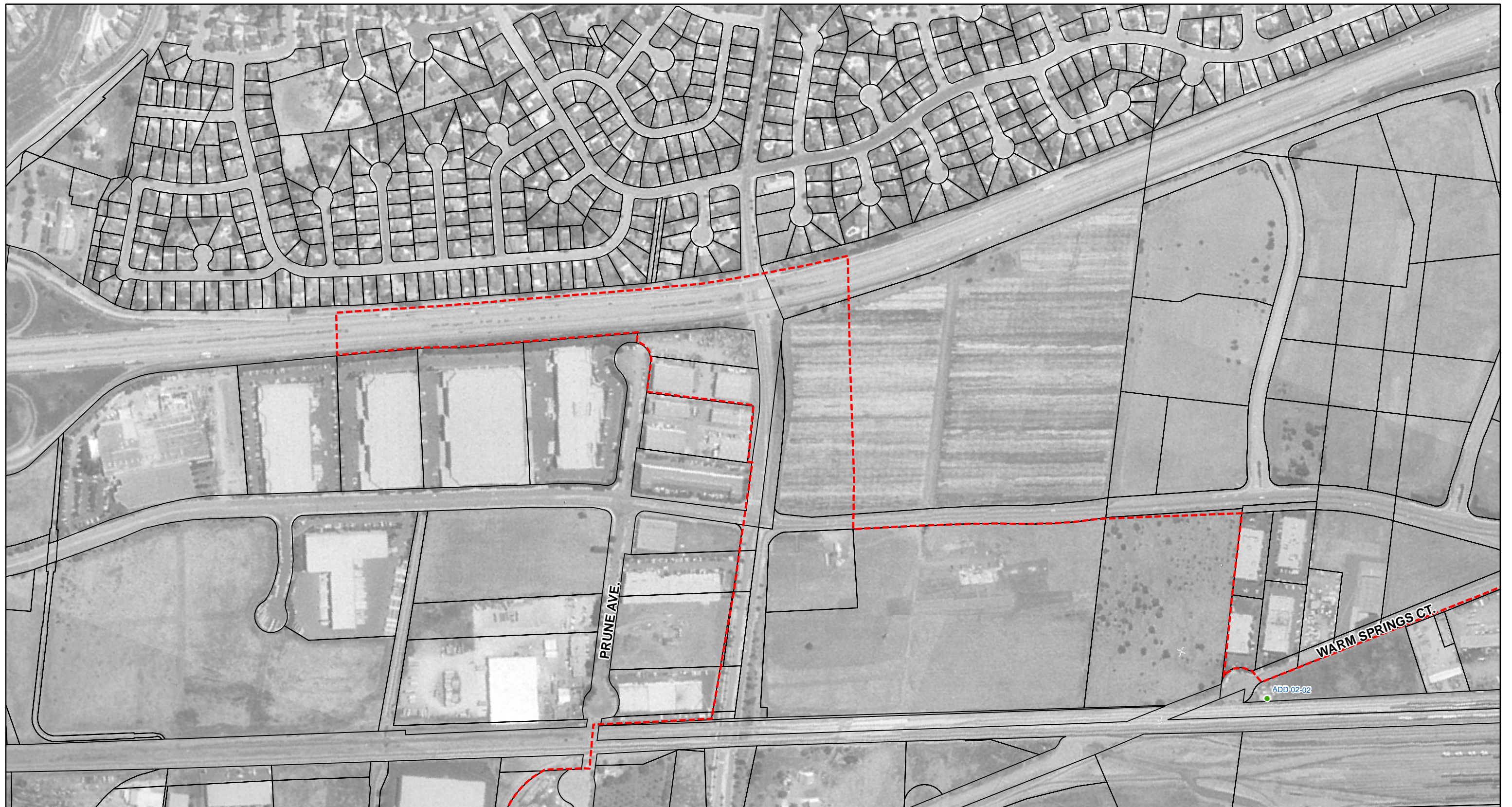




- Resources (National Register Status)**
- Eligible or listed historic property/historical resource
 - Not eligible for NRHP or CRHR
- Architectural APE**

Figure 3.2. Addendum APE for Historic Architecture.



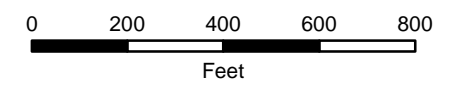


Resources (National Register Status)

- Eligible or listed historic property/historical resource
- Not eligible for NRHP or CRHR

 Architectural APE

Figure 3.3. Addendum APE for Historic Architecture.



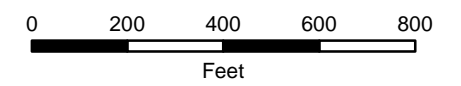


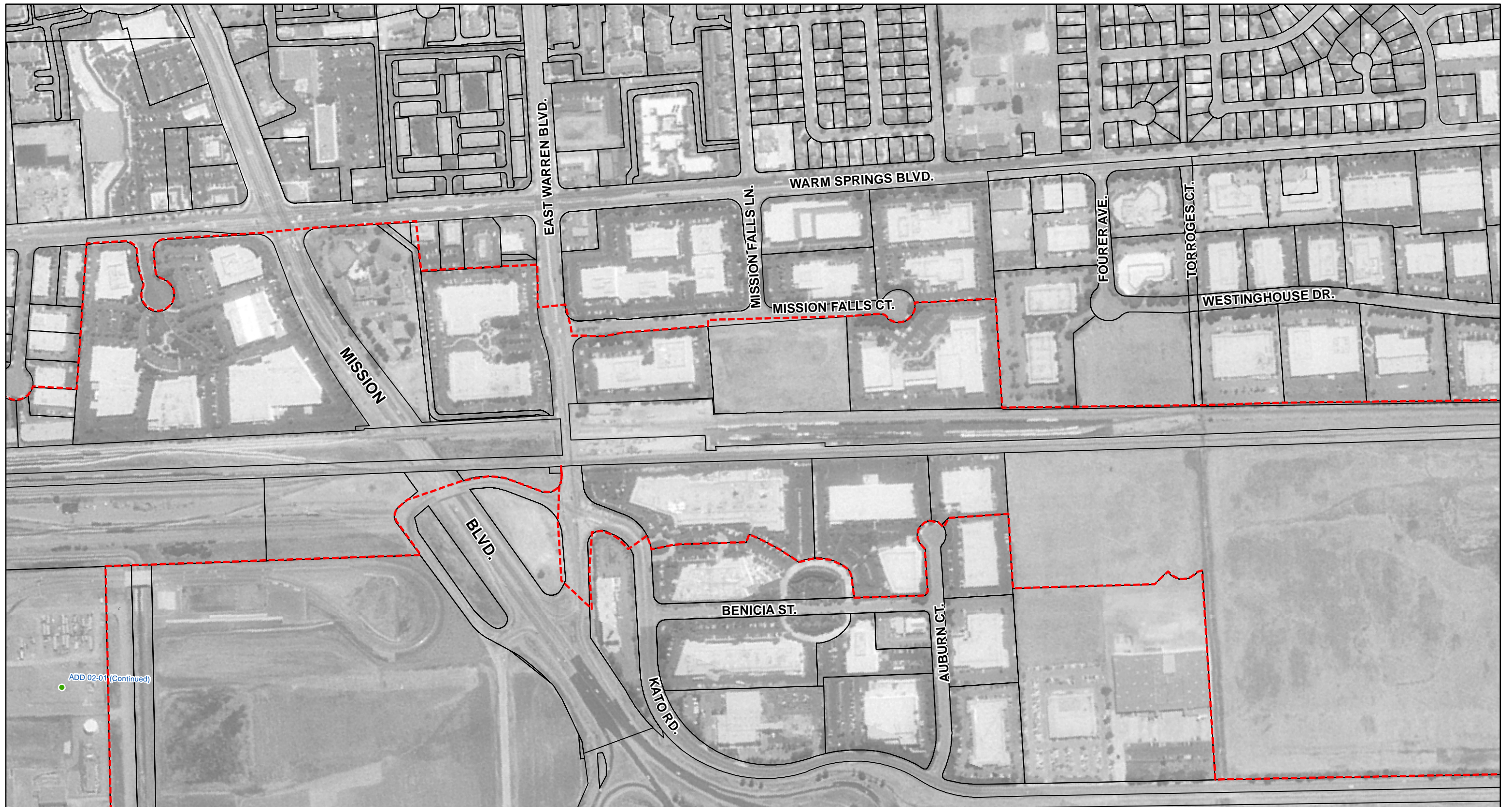
Resources (National Register Status)

- Eligible or listed historic property/historical resource
- Not eligible for NRHP or CRHR

 Architectural APE

Figure 3.4. Addendum APE for Historic Architecture.



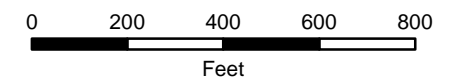


Resources (National Register Status)

- Eligible or listed historic property/historical resource
- Not eligible for NRHP or CRHR

Architectural APE

Figure 3.5. Addendum APE for Historic Architecture.






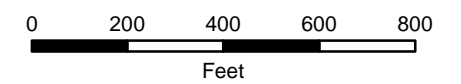
- Resources (National Register Status)**
- Eligible or listed historic property/historical resource
 - Not eligible for NRHP or CRHR
-  Architectural APE

Figure 3.6. Addendum APE for Historic Architecture.



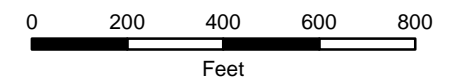


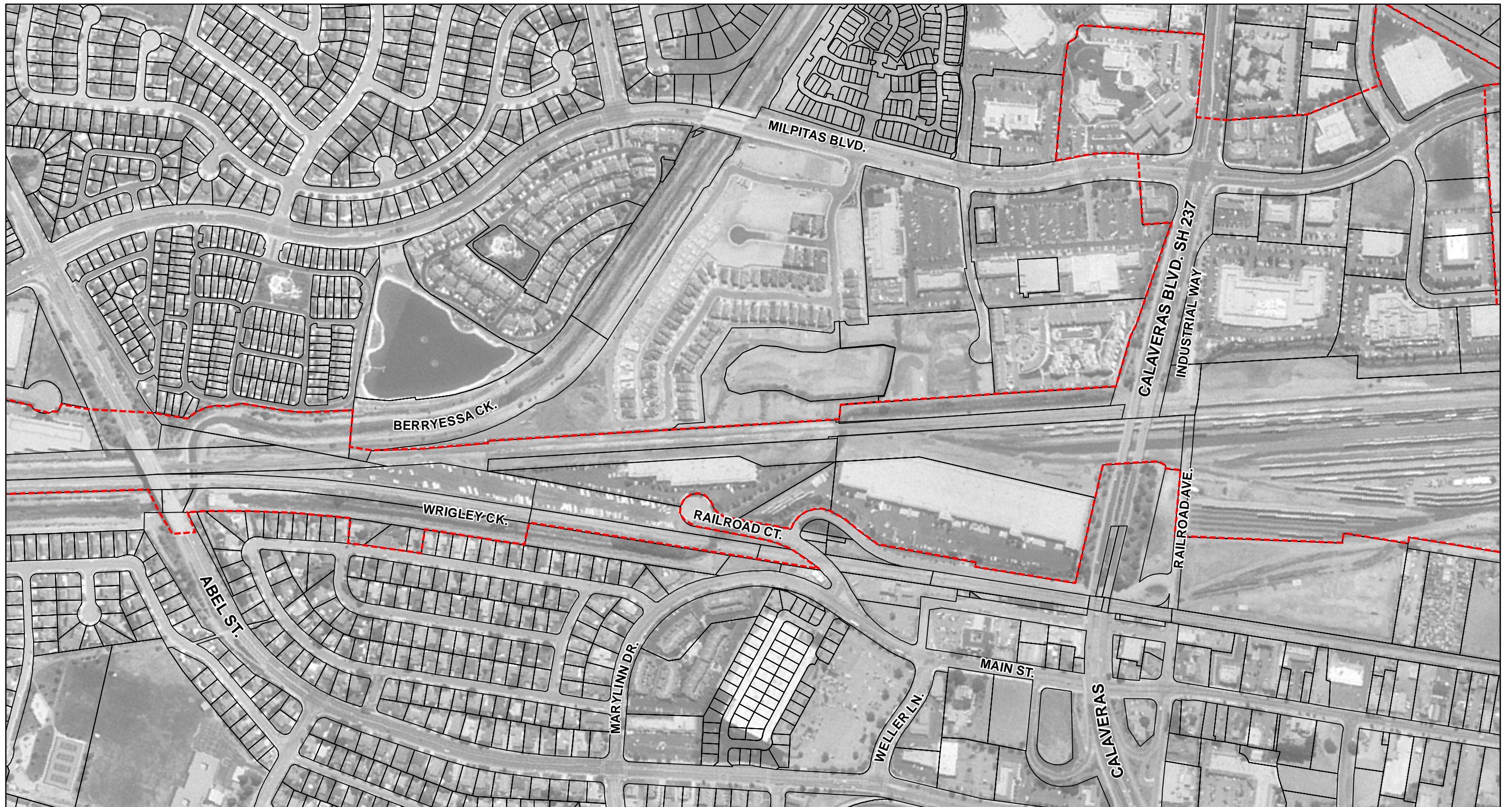
Resources (National Register Status)

- Eligible or listed historic property/historical resource
- Not eligible for NRHP or CRHR

 Architectural APE

Figure 3.7. Addendum APE for Historic Architecture.



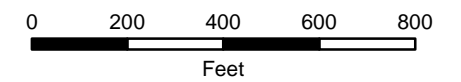


Resources (National Register Status)

- Eligible or listed historic property/historical resource
- Not eligible for NRHP or CRHR

 Architectural APE

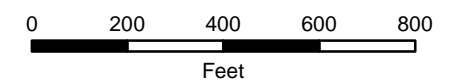
Figure 3.8. Addendum APE for Historic Architecture.

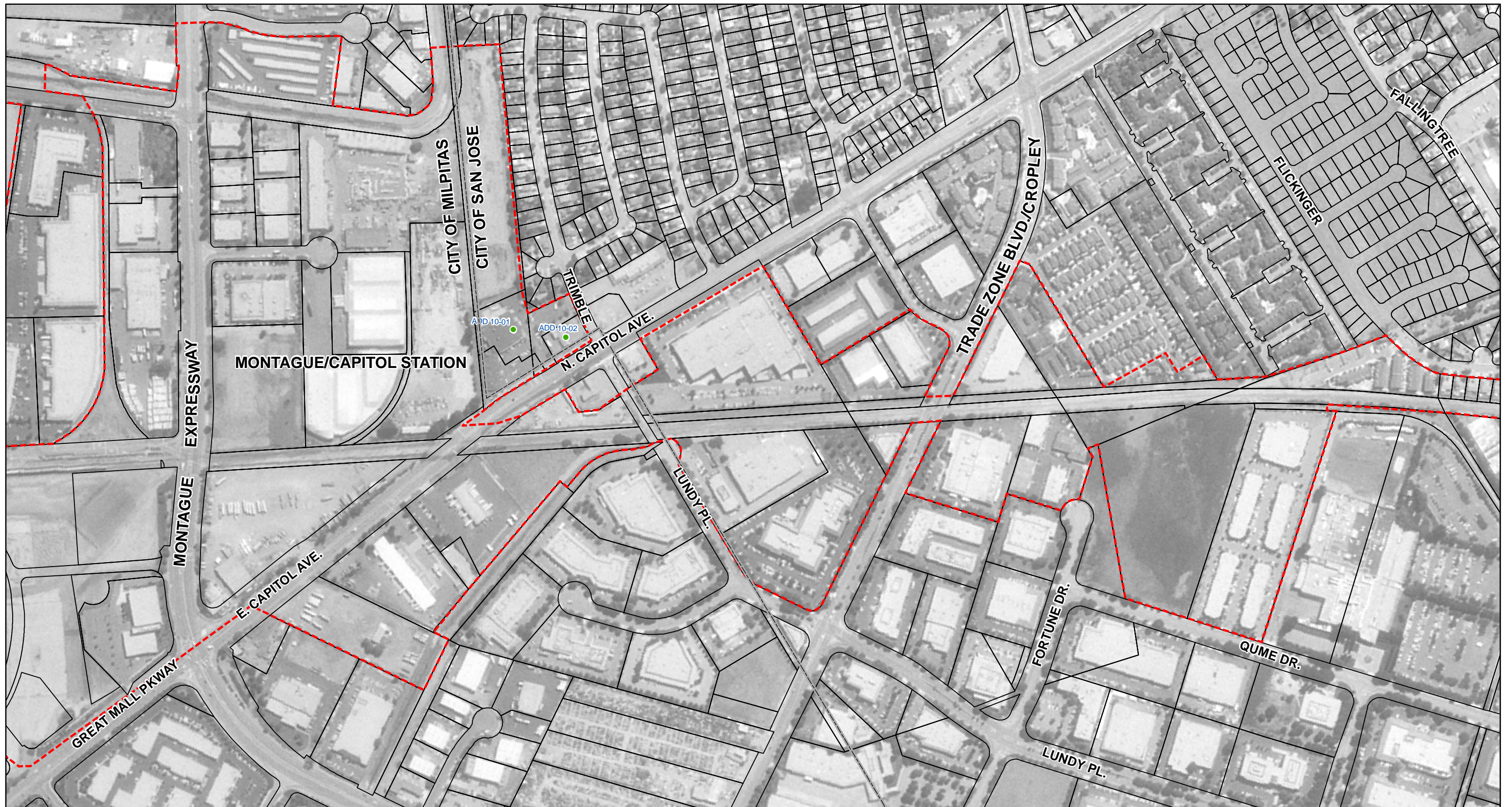




- Resources (National Register Status)**
- Eligible or listed historic property/historical resource
 - Not eligible for NRHP or CRHR
- Architectural APE

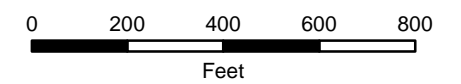
Figure 3.9. Addendum APE for Historic Architecture.





- Resources (National Register Status)**
- Eligible or listed historic property/historical resource
 - Not eligible for NRHP or CRHR
- Architectural APE

Figure 3.10. Addendum APE for Historic Architecture.



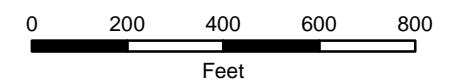


Resources (National Register Status)

- Eligible or listed historic property/historical resource
- Not eligible for NRHP or CRHR

 Architectural APE

Figure 3.11. Addendum APE for Historic Architecture.






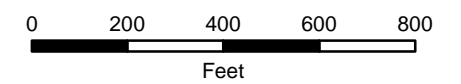
- Resources (National Register Status)**
- Eligible or listed historic property/historical resource
 - Not eligible for NRHP or CRHR
-  Architectural APE

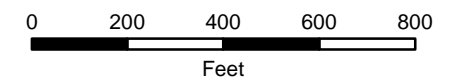
Figure 3.12. Addendum APE for Historic Architecture.





- Resources (National Register Status)**
- Eligible or listed historic property/historical resource
 - Not eligible for NRHP or CRHR
- Architectural APE**

Figure 3.13. Addendum APE for Historic Architecture.



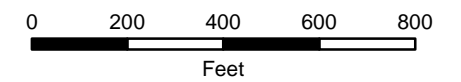


Resources (National Register Status)

- Eligible or listed historic property/historical resource
- Not eligible for NRHP or CRHR

Architectural APE

Figure 3.14. Addendum APE for Historic Architecture.



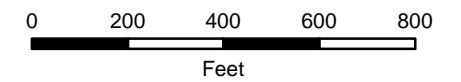


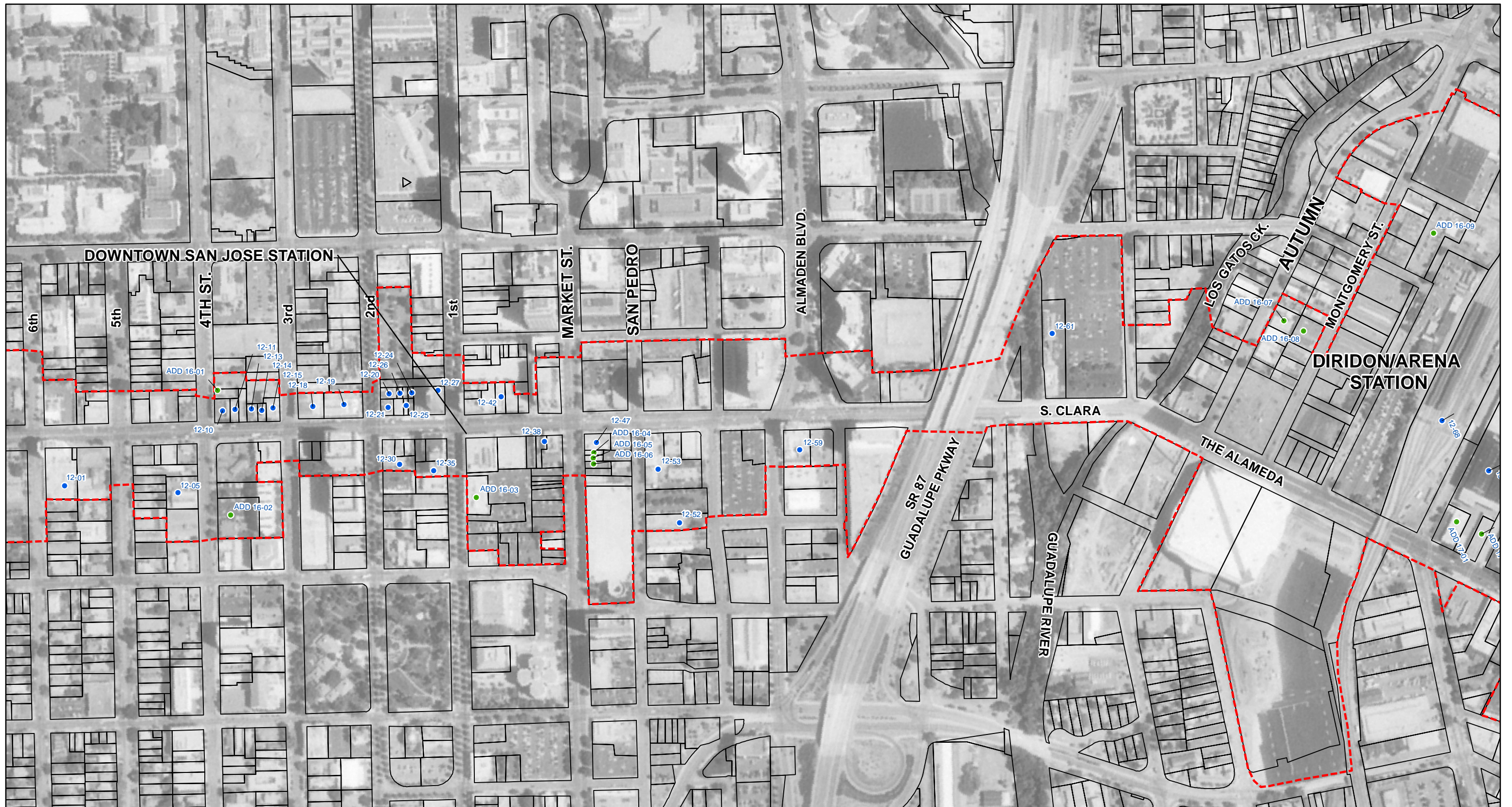
Resources (National Register Status)

- Eligible or listed historic property/historical resource
- Not eligible for NRHP or CRHR

Architectural APE

Figure 3.15. Addendum APE for Historic Architecture.



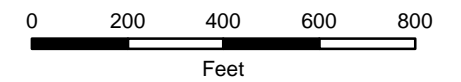


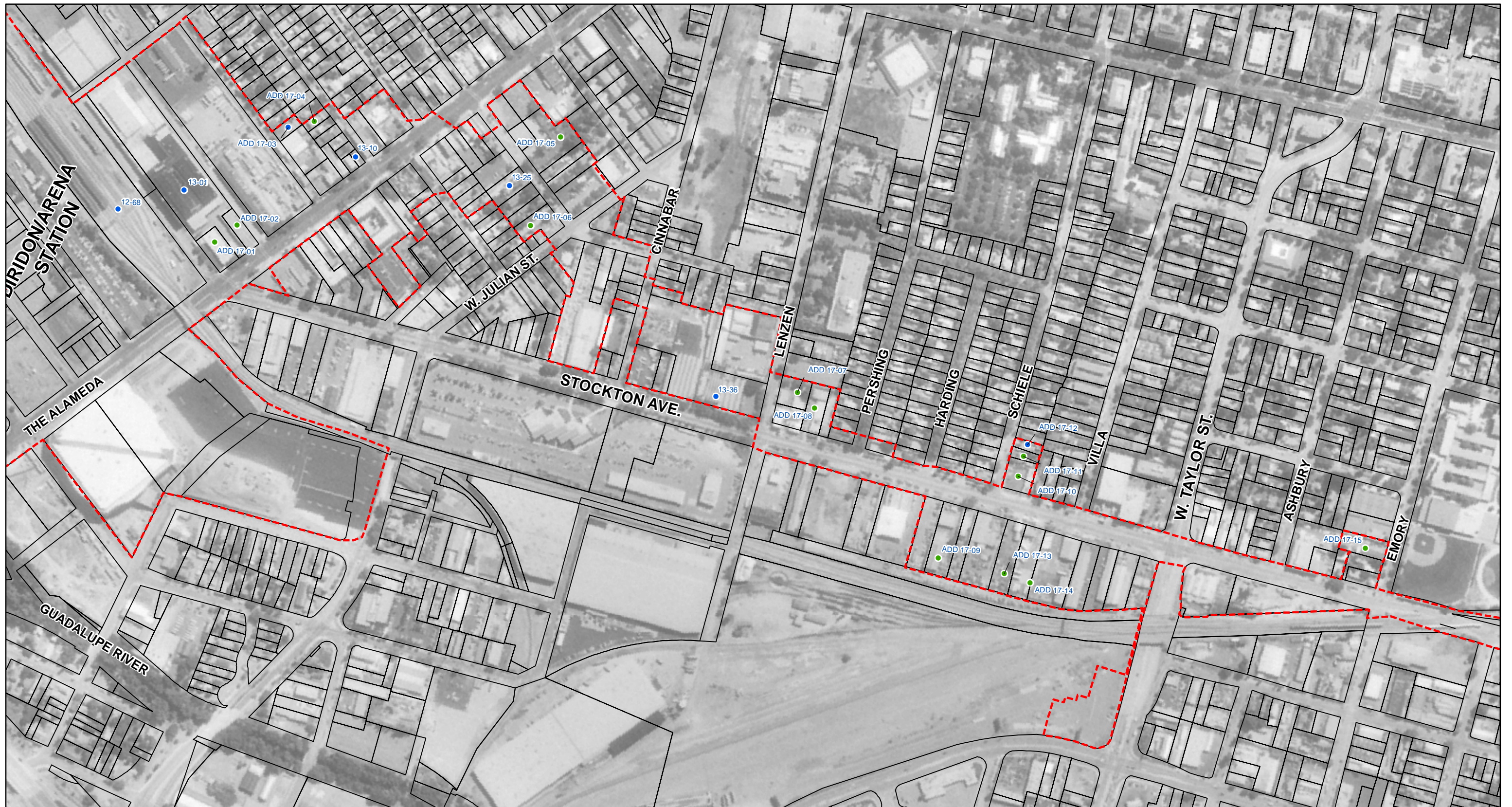
Resources (National Register Status)

- Eligible or listed historic property/historical resource
- Not eligible for NRHP or CRHR

Architectural APE

Figure 3.16. Addendum APE for Historic Architecture.



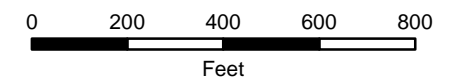


Resources (National Register Status)

- Eligible or listed historic property/historical resource
- Not eligible for NRHP or CRHR

Architectural APE

Figure 3.17. Addendum APE for Historic Architecture.



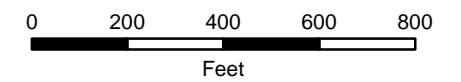


Resources (National Register Status)

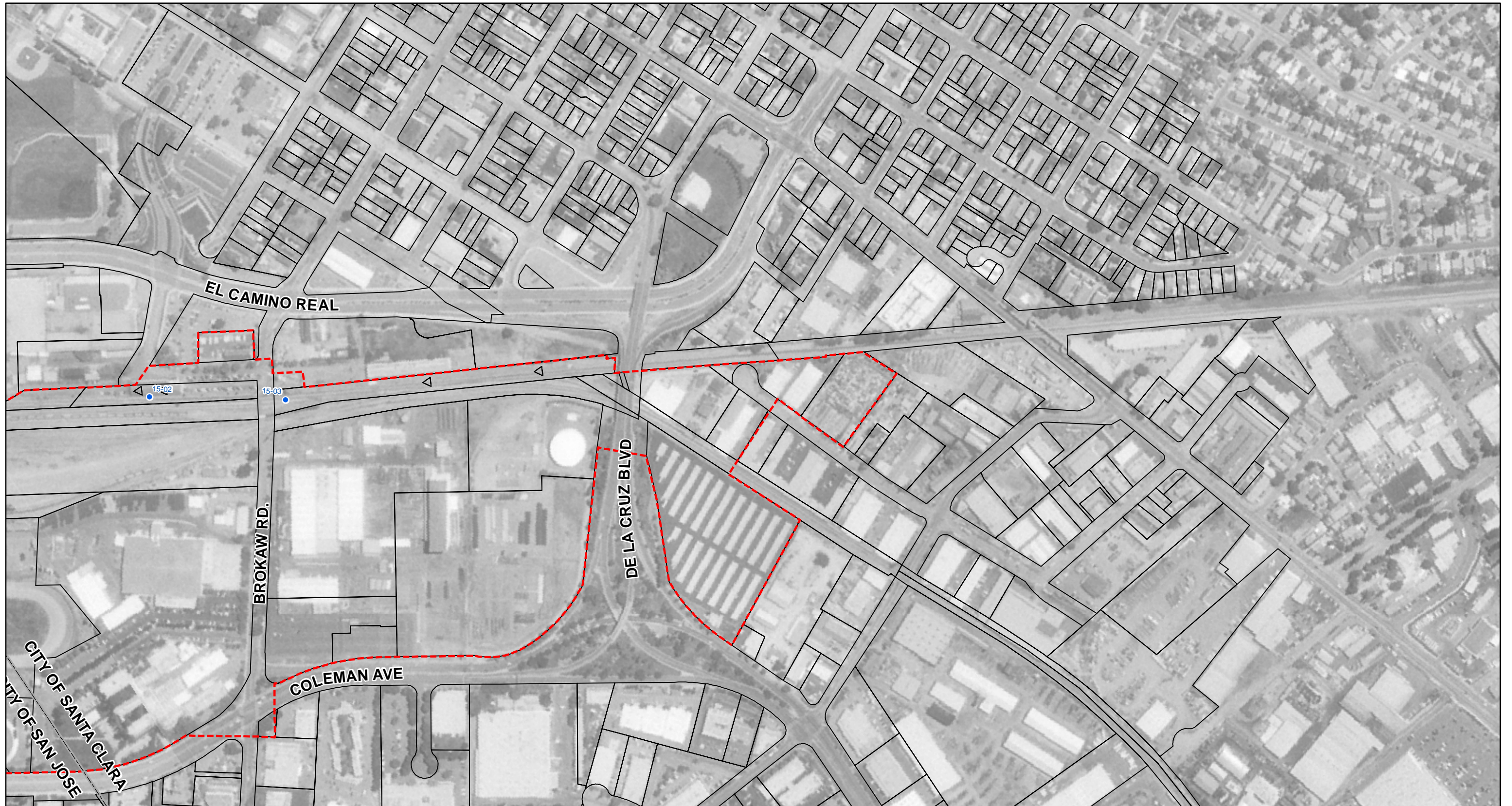
- Eligible or listed historic property/historical resource
- Not eligible for NRHP or CRHR

 Architectural APE

Figure 3.18. Addendum APE for Historic Architecture.



CITY OF
CITY OF SAN JO



- Resources (National Register Status)**
- Eligible or listed historic property/historical resource
 - Not eligible for NRHP or CRHR
- Architectural APE**

Figure 3.19. Addendum APE for Historic Architecture.

