

3 Capitol Expressway Light Rail to Eastridge

Estimated Cost: \$599.6 million*

Secured Funding: \$334.2 million

Year of Completion: Phase I: 2015, Phase II: 2025

Project Description:

This project will transform Capitol Expressway into a multi-modal boulevard offering bus and light rail transit, and safe pedestrian pathways with connections to the regional trail system.

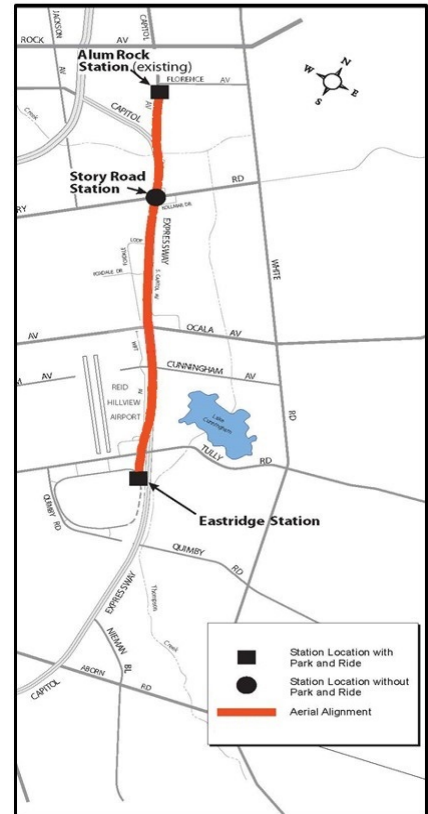
Phase I includes pedestrian and bus improvements along Capitol Expressway to improve pedestrian access by adding sidewalks, street lights, and landscaping from Capitol Avenue to Quimby Road. This phase also includes reconstruction of the Eastridge Transit Center.

Phase II will extend light rail from Alum Rock Station to the Eastridge Transit Center with elevated structures at Capitol Avenue, Story Road, and Tully Road. The Eastridge extension will include LRT station at Story Road (aerial) and Eastridge (at-grade).

Project Status:

Phase I - The pedestrian improvements were completed in the spring of 2013. Eastridge Transit Center was completed in May 2015.

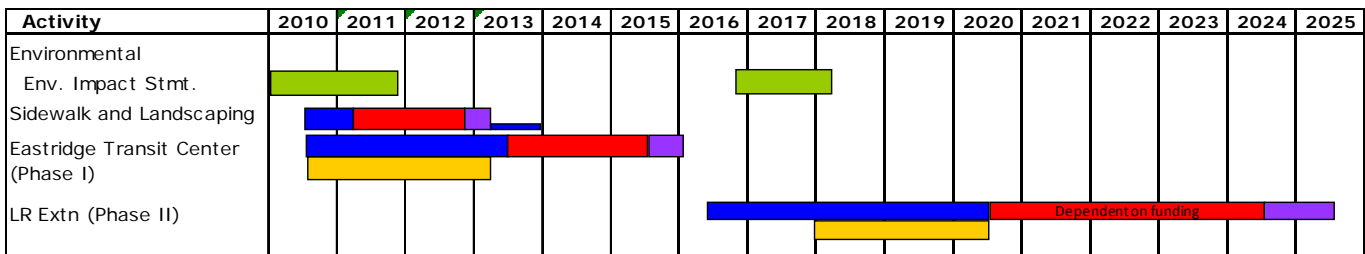
Phase II –Phase II (Eastridge to BART Regional Connector) will extend light rail to the Eastridge Transit Center. A public scoping meeting to discuss the environmental document was held in June 2018 to discuss the new aerial structure at Ocala and retain 4 lanes in each direction on Capitol Expressway from Story Road to Capitol Avenue. Due to unavoidable significant noise, vibration, and traffic impacts, a supplemental Environmental Impact Report (EIR) will be required to complete the environmental clearance. The public review on the supplemental EIR began on October 3, 2018 and a public meeting was held on October 18, 2018. VTA board certification of the environmental document is expected in spring 2019. Right of activities are ongoing and acquisition is expected to begin after environmental clearance. 35% design submittal was received in June 2018. 65% design is in progress and submittals are expected in March 2019. PG&E final design is ongoing. Construction of PG&E transmission tower relocations is planned for late 2019 and complete by early 2020. Construction of the light rail extension is planned to begin in mid-2020 and complete in late 2024.



Project Cost:

Project	Total Estimate	Total Estimated Cost (in \$M)				Incurred through Dec 2018 (in \$M)			Status
		Others	Measure A	TBD	Others	Measure A	Total		
DTEV Planning & Conceptual Engg	\$ 11.1	\$ 5.7	\$ 5.3	\$ -	\$ 5.7	\$ 5.3	\$ 11.1	Completed	
DTEV Environmental & 90% CELR	\$ 56.1	\$ 0.2	\$ 55.9	\$ -	\$ 0.2	\$ 55.9	\$ 56.1	Completed	
CELR Phase I - Pedestrian Improvements	\$ 19.0	\$ 16.0	\$ 3.0	\$ -	\$ 16.0	\$ 3.0	\$ 19.0	Completed	
CELR Phase I - Eastridge Transit Center	\$ 60.4	\$ 26.9	\$ 33.5	\$ -	\$ 26.9	\$ 33.2	\$ 60.1	Closeout	
Eastridge to BART Regional Connector Project	\$ 453.0	\$ 139.4	\$ 247.0	\$ 66.6	\$ -	\$ 11.0	\$ 11.0	Ongoing	
Total	\$ 599.6	\$ 188.2	\$ 344.8	\$ 66.6	\$ 48.8	\$ 108.5	\$ 157.2		

Project Schedule:



Environmental ROW Construction Closeout

* P-0375, P-0476, P-0743, P-0744, P-0787