

# VTA's BART Silicon Valley Phase II Extension Project

28<sup>th</sup> Street/Little Portugal  
Community Working Group

September 22, 2021



# Agenda

- Welcome and Introductions
- Follow-up Items
- Phase II Project Update
- Phase II Project Delivery Methods
- Look & Feel of the Station
- Station Access
- Five Wounds Urban Villages Plan & 28<sup>th</sup> Street Design Development Framework
- Community Engagement
- CWG Member Report Back
- Next Steps

# Zoom Introduction

## Communication Protocols:

- Meeting participants are on mute until unmuted by Host for Q&A
- There is a Q&A feature at the bottom of the screen for participants to type their questions in advance. You can “raise your hand” to be unmuted to speak.
- If you are calling in on a landline, please press \*9 to “raise your hand” and we will unmute you when it is your turn to speak.
- We will devote up to 2 minutes per question/comment and keep comment related to agenda item.
- Please allow others an opportunity to speak before “raising your hand” again.



# Upcoming Meetings – 28th Street / Little Portugal

- Upcoming 28th Street / Little Portugal CWG Dates
  - November 17, 2021, 4:00 PM
- VTA Board of Directors [vta.org/about/board-and-committees](https://vta.org/about/board-and-committees)
  - October 7, 2021, 5:30 PM
  - November 4, 2021, 5:30 PM
- Kate will email alerts for other meetings, e.g. Board Workshops



# Follow-Up Items

Kate Christopherson, VTA



# Follow-up Items: 28th Street / Little Portugal

- Provide more information on how VTA coordinates with nearby construction – *VTA's BART Silicon Valley team tracks coordinates and tracks new developments with both Cities. In addition, BSV coordinates with VTA's Land Use and Transportation Integration team to provide coordinated comments to the City of San José on proposed developments. VTA also coordinates one-on-one with developers.*
- Station access is an item on today's agenda ✓
- Provide update on Five Wounds Trail coordination – *VTA is continuing to work with the City, County, and Open Space Authority. VTA will provide an update when one is available.*



# Questions



# Phase II Update

Erica Roecks, VTA





# Light Rail is Back!



- Orange Line service restarted on August 29
- Limited Green and Blue Line service restarted on September 4
- Blue Line service fully restored on September 12
- VTA employees working nearly around the clock to ensure the system is safe and in good working conditions
- Remember, please obey all warning signs, signals, and crossing gates!



# Project Highlights

- Real estate acquisition process continues with negotiations underway for key properties required for project elements and field offices
- VTA and BART working together to finalize sign-off on Design Criteria/Requirement Manuals to be included in final procurement documents
- Cooperative Agreement #1 with Cities of San José, Santa Clara and Caltrans now executed
- VTA, FTA, and Project Management Oversight Contractor continue weekly coordination meetings



# FTA's Expedited Project Delivery Update

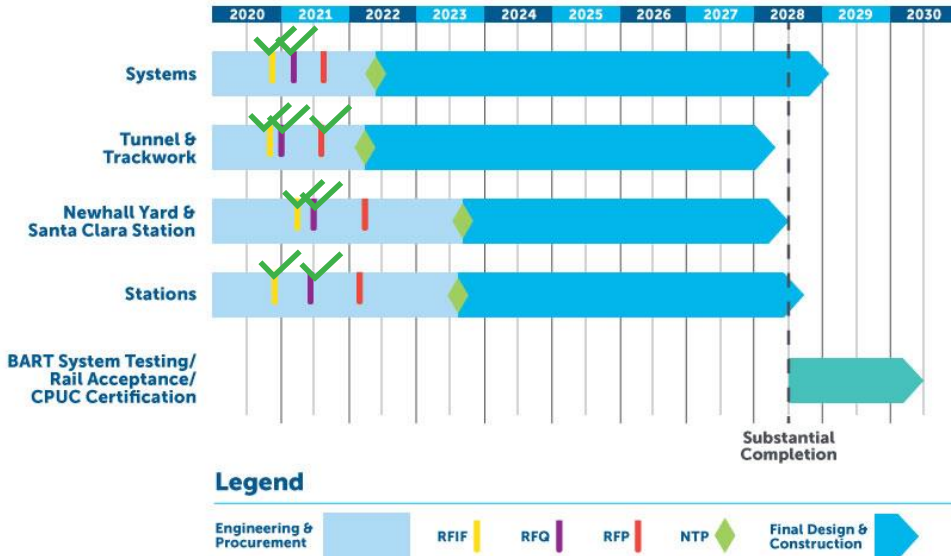
On July 28, 2021, the FTA's Executive Director advised VTA's GM/CEO on the following:

- VTA and Congress to concurrently receive FTA notification by September 2021 regarding project's application selection
- With project selection, VTA will receive full pre-award authority
- If FTA recommends a Letter of Intent, Congress will have a 30-day review period. If approved, VTA anticipates receiving a Letter of Intent from FTA by October



# Contracting Updates

## Framework to Completion



## Requests for Qualifications (RFQ)

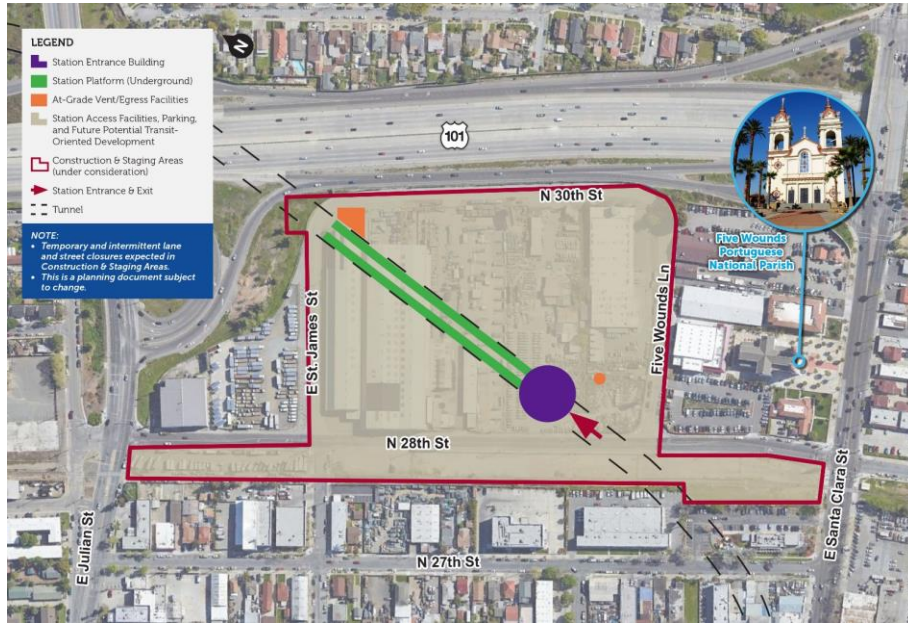
- Released **Tunnel RFQ** on Dec. 29, 2020
- Released **Systems RFQ** on Feb. 26, 2021
- Released **Stations RFQ** on June 29, 2021
- Released **Santa Clara & Newhall Yard RFQ** on Sept. 13, 2021

## Requests for Proposals (RFP)

- Released **Tunnel Draft RFP** on July 28, 2021; **Final RFP** to be released in *September*
- Systems RFP** to be released *Oct. 2021*
- Stations RFP** to be released *February 2022*
- Santa Clara & Newhall Yard RFP** to be released *March 2022*



# 28<sup>th</sup> Street/Little Portugal Station

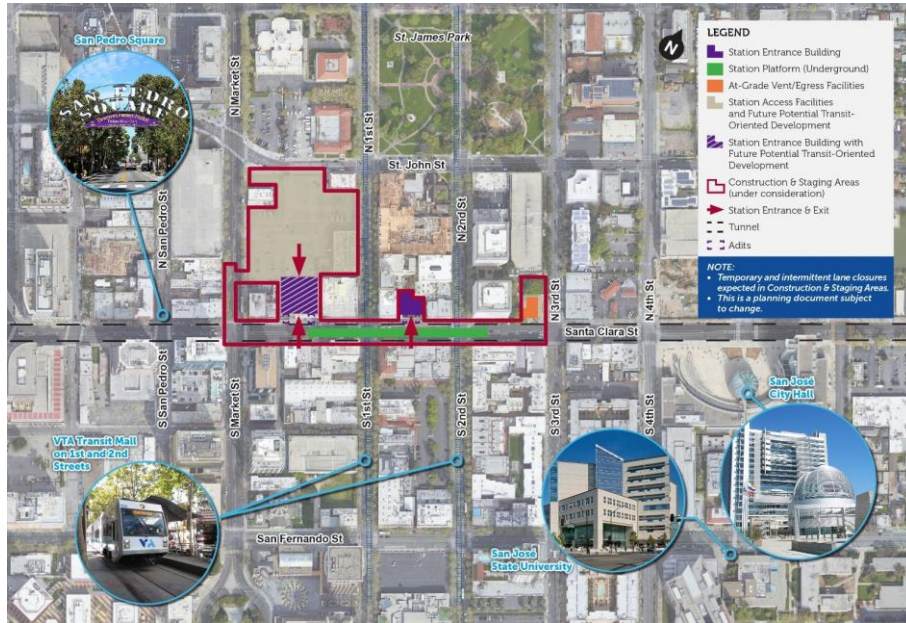


- 6,700 weekday riders anticipated by 2040
- Future connection to Five Wounds Trail
- Bike and vehicle parking will be provided





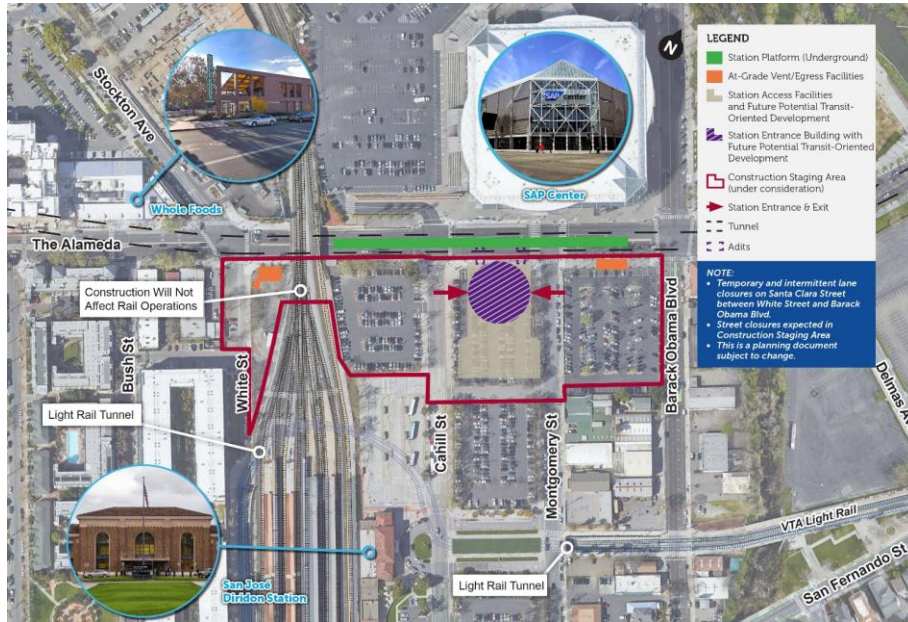
# Downtown San José Station



- 27,900 weekday riders anticipated by 2040
- Bike parking will be provided and easy connections to VTA bus and light rail
- Within walking distance to SJSU and numerous restaurants and venues



# Diridon Station



- 9,900 weekday riders anticipated by 2040
- Bicycle parking will be provided
- Adjacent to SAP Center, Downtown West, and the future Diridon intermodal station





# Santa Clara Station



- 10,100 weekday riders anticipated by 2040
- Will have connection to Gateway Crossings and Santa Clara Caltrain Station
- Will include bike and vehicle parking
- Within walking distance to Santa Clara University, PayPal Park

# Questions



# Project Delivery Methods

R. John Caulfield, PE, GE  
VTA's Contract Package 2 Project Manager



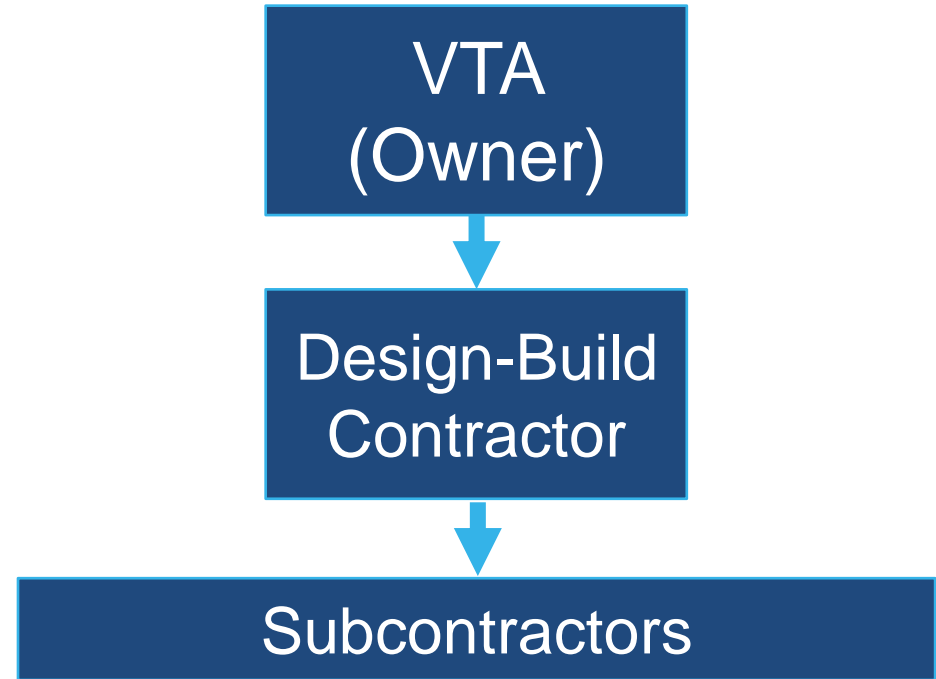
# BSV Phase II Contracting Plan

Contract Package	Title	Delivery Method	General Scope*
<b>CP1</b>	Systems (Approx. contract value \$500M)	Design-Build (DB)	<ul style="list-style-type: none"> <li>• All rail system elements</li> </ul>
<b>CP2</b>	Tunnel & Trackwork (Approx. contract value \$2,500M)	Progressive Design-Build (PDB)	<ul style="list-style-type: none"> <li>• Tunnel &amp; trackwork</li> <li>• Mid-tunnel facilities</li> <li>• 28<sup>th</sup> Street/Little Portugal support of excavation</li> <li>• Utility relocations as required</li> <li>• Stations Support of Excavation &amp; Connecting Adits</li> </ul>
<b>CP3</b>	Newhall Yard & Santa Clara Station (Approx. contract value \$500M)	Design-Build (DB)	<ul style="list-style-type: none"> <li>• Yard &amp; Maintenance Facility</li> <li>• Line &amp; track</li> <li>• Santa Clara Station</li> <li>• 500 space parking garage</li> <li>• Utility relocations as required</li> </ul>
<b>CP4</b>	Stations (Approx. contract value \$500M)	Design-Build (DB)	<ul style="list-style-type: none"> <li>• 28th Street/Little Portugal, Downtown and Diridon stations</li> <li>• 1,200 spaces parking (28th Street/Little Portugal Station)</li> <li>• Utility relocations as required</li> </ul>
*Final scope elements under evaluation.			



# Design-Build

- Combines architectural, design, and construction services into one contract:
  - Single-point of management
  - Simplified procurement but requires detailed scope of work, specification and performance criteria
- Cost competitive but driver is usually schedule as opposed to price
- Not a risk transfer tool
- Cost known for provided scope of work at contract award
- VTA involvement minimal after selection



# Progressive Design-Build

- Similar to Design-Build but incorporates contractor involvement earlier. Ability to mobilize design efforts earlier
- Contractor selection primarily qualifications based
- VTA provides preliminary design and works with the contractor in collaborative process through the initial design phase and then construction
  - Avoids creating a design that is less feasible and/or more expensive to construct. Offers opportunities for design to cost
  - Cost is evaluated iteratively using transparent “open book” estimates
  - Maximizes innovation and progressive de-risking of the project



# BSVII Progressive Design Build Process

## Phase 1

- Progressive Design Build Contractor to collaborate with VTA, City of San José, and the community
- Advance preconstruction design (10% to 90%)
- Preconstruction activities, such as any additional geotechnical work and utility relocation
- Early work items such as Tunnel Boring Machine portal preparation and temporary power

## Phase 2

- Progressive Design Build Contractor to provide proposal including construction cost, schedule, and risk mitigation proposals
- Complete design
- Progress construction to completion



# Questions





# Look & Feel of the Station

Doug Moody, VTA

Peter Sokoloff, Foster & Partners



Where did the concepts presented to the public come from?



# Design Review Committees (DRCs)

- A forum for community leaders and local government partners to provide input to VTA's BART Phase II project team for select visual elements of the stations.
- Monthly meetings between June and September 2021.
- The DRCs helped the project team shape the station look and feel elements that were shared broadly with the public for review and feedback.



# 28<sup>th</sup> Street/Little Portugal DRC Working Group Members

- Five Wounds/Brookwood Terrace NAC
- Ride ESSJ
- Roosevelt Park
- Five Wounds Portuguese National Parish
- City of San José



# Station Look & Feel Elements

- **Station elements that are not part of the process:**
  - Layouts and configurations of core station components
  - Transit oriented development
  - Station access, entrance locations, and fare gates
  - Selection of public art
  
- **Station elements considered in the process:**
  - Customer visual experience
  - Palette of material finishes
  - Canopies/entrance areas
  - Areas for public art



# Path of DRC Summary Report to CP4 RFP Release in first half of 2022

Finish Draft RFP

Internal review

City review

Finalize RFP

RFP release in the first half of 2022

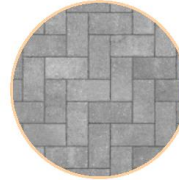
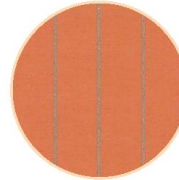


# Architectural Finish Options



■ Walls  
■ Flooring

- Look & feel materials
- Floor and wall finishes
- Artwork placement



## Station Entrance

Space for musicians outside station will bring a warm welcome to the transit journey

Art shown for illustrative purposes only. Art will be selected later.





**Station Headhouse (above ground portion of station)**

Flooring - Option A

**Patterned floor to express cultural identity, art to reflect diversity**

Art shown for illustrative purposes only. Art will be selected later

*"Portuguese pattern to highlight station identity"*



**Station Headhouse (above ground portion of station)**

Flooring - Option B

**Colorful terrazzo floor to express cultural identity, art to reflect diversity**

Art shown for illustrative purposes only. Art will be selected later



**Station Concourse**

Flooring - Option A

**Patterned floor to express cultural identity, art to reflect diversity**

Art shown for illustrative purposes only. Art will be selected later.

*"Concourse floor is a great canvas to express identity"*



**Station Concourse**

Flooring - Option B

**Colorful terrazzo floor to express cultural identity, art to reflect diversity**

Art shown for illustrative purposes only. Art will be selected later.



**Station Platform**  
Flooring - Option A

**Patterned floor to express cultural identity, art to reflect diversity**

*"Wayfinding value to identify station"*



**Station Platform**  
Flooring - Option B

Colorful terrazzo floor to express cultural identity, art to reflect diversity



Station Back of House (employee-only areas) Pavilion

Cladding - Option A`

Red Terracotta

*"Five Wounds Church red terracotta"*



Station Back of House (employee-only areas) Pavilion

Cladding - Option B

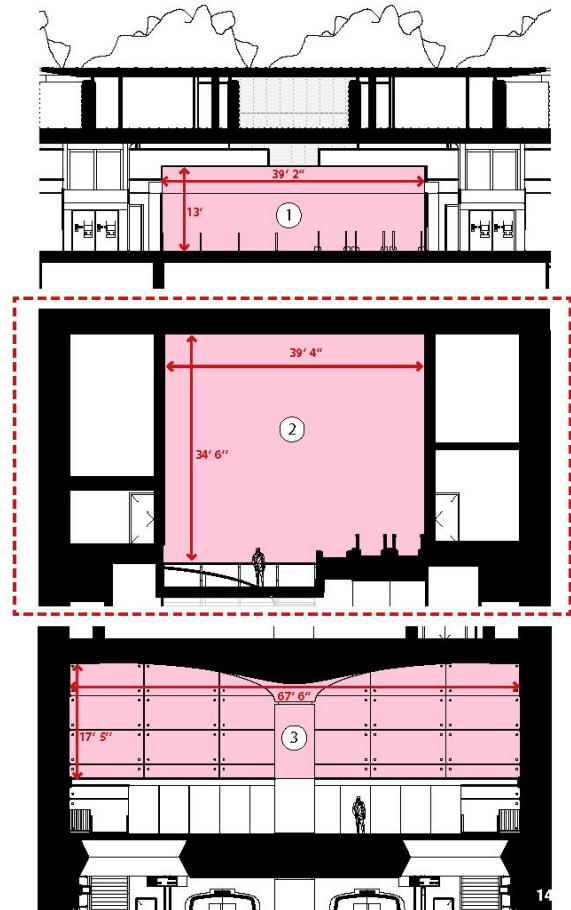
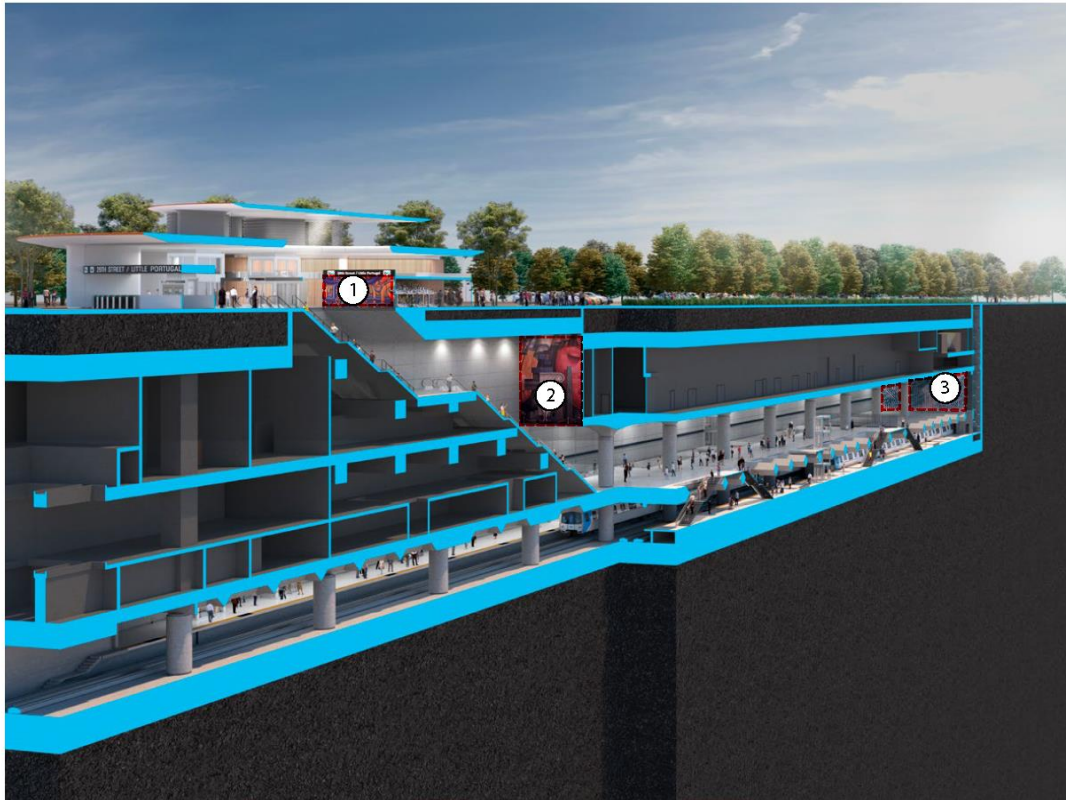
Off White Terracotta

*"Five Wounds Church facade"*





# Station Artwork Location



Station Artwork Location

Art shown for illustrative purposes only. Art will be selected later

*"Multicultural community identity can be expressed in artwork"*



## Station Ceiling Fixtures

Triangular profiles to incorporate sprinklers and cabling are an opportunity to embellish the ceiling

Art shown for illustrative purposes only. Art will be selected later

*"Use of wayfinding signage to celebrate the identity of the station"*



# Community Engagement – Notifications

Notifications of Social Pinpoint community feedback platform and pop-ups to:

- VTA Board / Internal staff
- Cities of San José & Santa Clara
  - Council Offices
  - DRC Executive Members
  - Communications Staff
- DRC Working Group Members
- Community Working Group (CWG) members and larger email list
- Project-wide email list
- Social media



# Community Engagement – Pop-ups

- Downtown San José Farmers' Market (Friday, September 10)
- Santa Clara Farmer's Market (Saturday, September 11)
- Alum Rock Village Farmers' Market (Sunday, September 12)
- Diridon Caltrain Station (Monday, September 13)
- Santa Clara Caltrain Station (Tuesday, September 14)

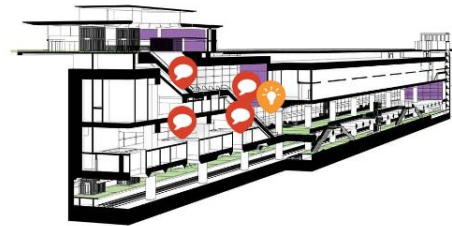


# Community Engagement – Social Pinpoint Site

Interactive online platform that shares project information and collects community feedback on specific aesthetic station elements: <https://bit.ly/vtabsv2stations>



## Architectural finish options



Walls  
Flooring

- Look & feel materials
- Floor and wall finishes
- Artwork placement



# Social Pinpoint Statistics

## Unique Users

- **Homepage** 1,650+
- 28th/LP 270+
- Downtown 300+
- Diridon 220+
- Santa Clara 340+

*Last updated 9/15/21*

*Feedback period closes 9/17/21*

## Comments

- 28th/LP 55+
- Downtown 65+
- Diridon 40+
- Santa Clara 60+

## Survey Responses

- 28th/LP 60+
- Downtown 95+
- Diridon 75+
- Santa Clara 80+



# How will feedback received be used?

- Summarized at the end of the process
- How feedback received has been, or will be, addressed will be posted on the website
- Updates at public meetings in late October / early November



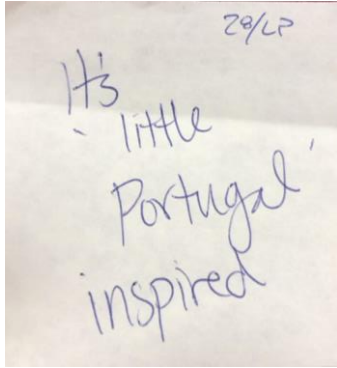


# Multiple Stations – Relevant Comments

- More greenery
- More shade, esp walkways and parking (where present) -- solar panels?
- Further include/integrate wayfinding
- More color and/or art, including on structural elements
- Include more strategies to retain stormwater
- Use sustainable materials
- Provide abundant places to sit
- Outside seating should not accommodate sleeping
- Recommendations for future considerations and processes to select art



# 28<sup>th</sup> Street /Little Portugal – Supportive Feedback



Love the nod to Portugal with the tiling!  
👍 10 days ago Like 👍+5 Dislike 🗨️

great colors and patterns!  
👍 6 days ago Like 👍 Dislike 🗨️

color, ceramic & texture for the win  
👍 4 days ago Like 👍 Dislike 🗨️



This station is almost an exact copy of an Underground station in London done in Art Deco/Moderne style. Southgate Underground station was built in 1933. The decorative tiling inside is also beautiful. I used the station for many years and it's design was really functional as everything was so easily accessible. It was also easy to meet people there as it was easy to see them! Love the new modern twist on a classic.



🗨️ 10 days ago Like 👍+1 Dislike 🗨️



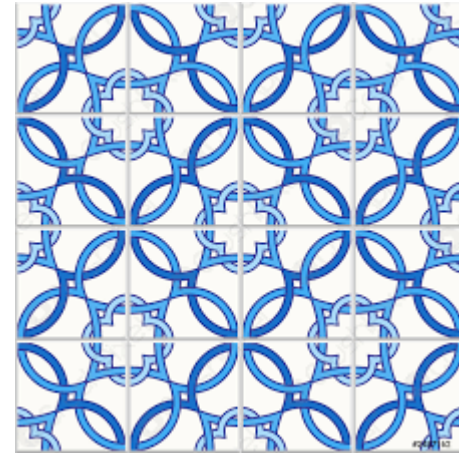
# 28<sup>th</sup> Street /Little Portugal – Constructive Feedback

- The station could be better designed and better fit into the aesthetic of the neighborhood.
- The tiling looks dated.
- Better to incorporate the entrance into a building than to make it stand alone.



# 28<sup>th</sup> St/Little Portugal Station– Relevant Comments

- Like Portuguese design treatments
- Plain flooring is calming and looks modern
- Use patterned tiling as an accent instead of widespread? Consider this pattern:



# Next Steps

- Summarize findings into a report to be included as a reference document in the Request for Proposal (RFP) package for design-build contractors for the stations
- Post report highlights and responses to public feedback on the project website
- Review RFP with City of San Jose
- Release RFP in first half of 2022



# Questions

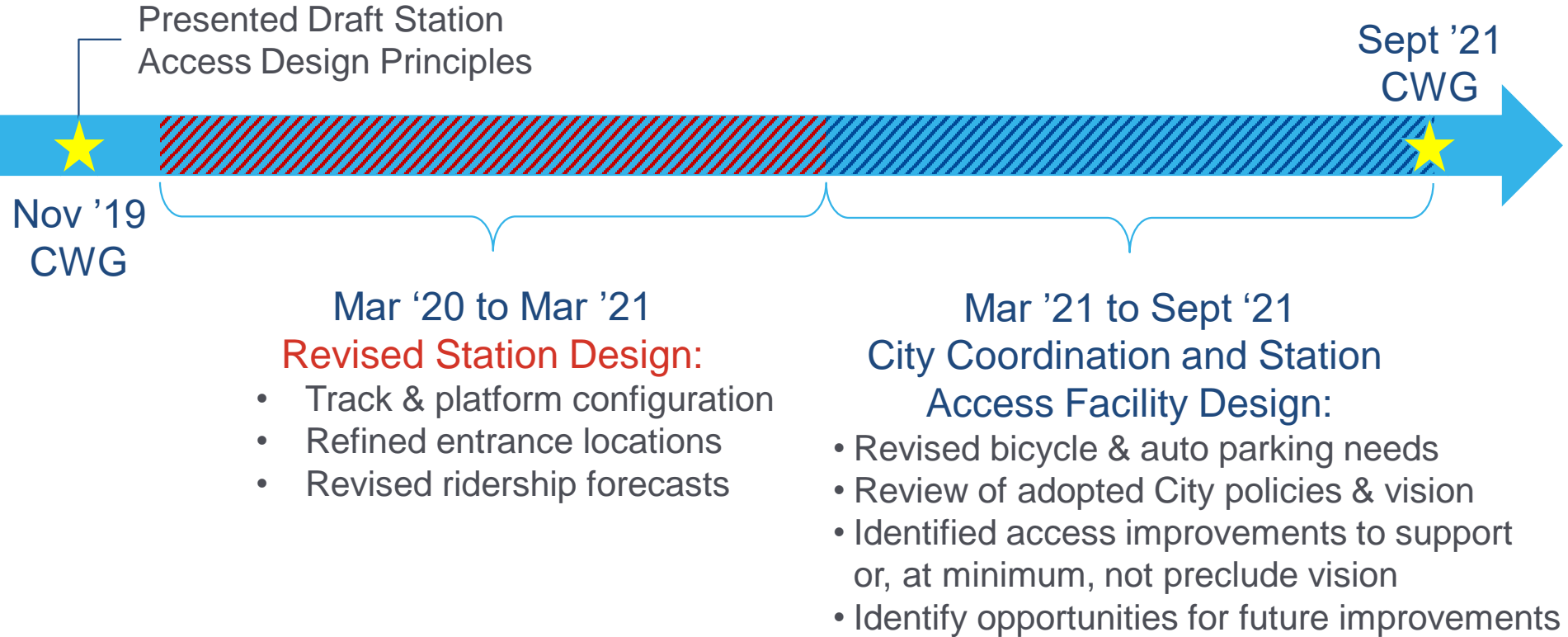


# 28th Street/Little Portugal Station Access & Circulation

Erica Roecks, VTA



# What have we done since 2019





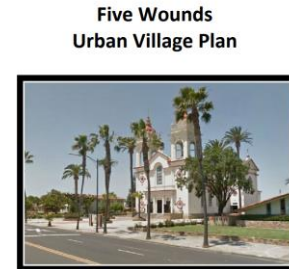
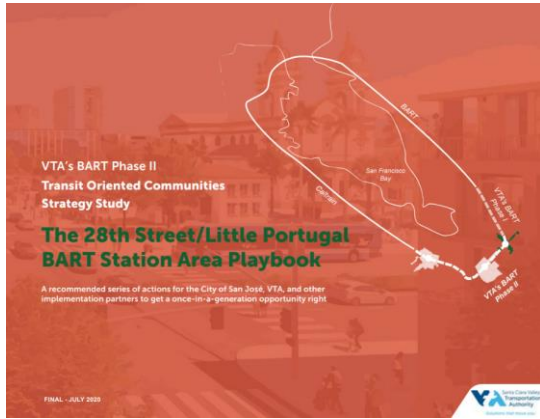
# Ongoing City Coordination

- June-Present: Biweekly City coordination on design of City access facilities to:
  - Establish a shared understanding of basis of design
  - Confirm station area vision and discuss features for possible inclusion in BSVII Project
  - Identify processes for community and public review and feedback into major elements (e.g., 28th Street and Five Wounds Trail Design)
- Documenting access and circulation facilities in Basis of City Facility Design (CFD) memo
  - Will be included in CP4 RFP

Monday	Tuesday	Wednesday	Thursday	Friday
	29 CSJ Access & Circulation...	30 CSJ Access & Circulation...	1 CSJ Access & Circulation...	2
	6 CSJ Access & Circulation...	7 CSJ Access & Circulation...	8 CSJ Access & Circulation... SC Project Wide & Access...	9
	13	14	15	16
	20 CSJ Access & Circulation...	21 CSJ Access & Circulation...	22 CSJ Access & Circulation... SC Project Wide & Access...	23
	27	28	29	30
	3 CSJ Access & Circulation...	4 CSJ Access & Circulation...	5 CSJ Access & Circulation... SC Project Wide & Access...	6



# Planning Principles



Approved by the City Council on November 19, 2013  
As amended by the City Council on December 11, 2018  
As amended by File No. GPT20-001 on December 15, 2020



# Station Access Priorities

## Pedestrian Access

- Create a pedestrian-first environment along 28<sup>th</sup> Street

## Bicycle Access

- Provide bicycle access facilities to the station and through the station area

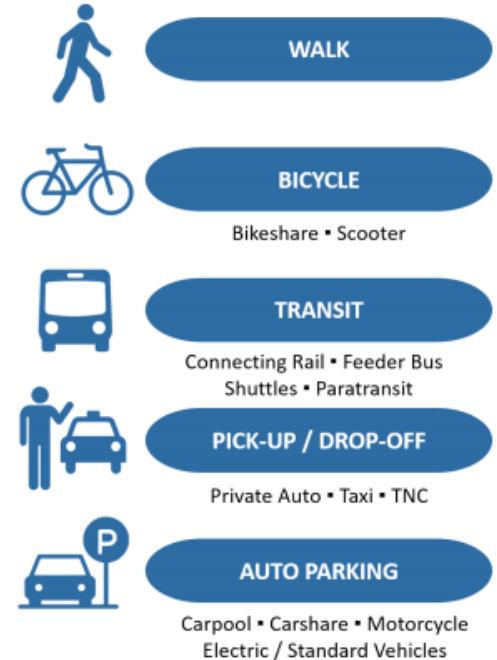
## Transit Access

- Accommodate on-site bus and para-transit needs
- Provide strong connections to BRT on Santa Clara and buses on Julian/McKee

## Auto Access

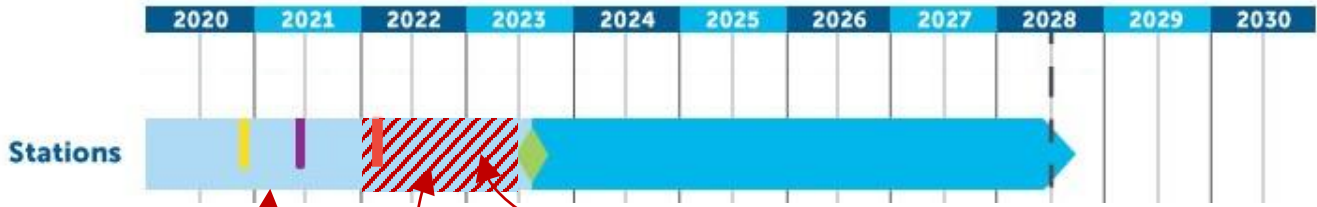
- Minimize through traffic on 28<sup>th</sup> Street
- Consider school pick-up/drop-off for Cristo Rey Jesuit High School

### VTA's Station Access Hierarchy

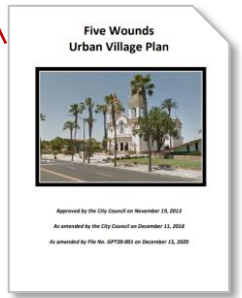


# Additional Opportunities for Your Input

## Framework to Completion



*En Movimiento*  
(adopted early 2021)



*Five Wounds Urban Village Plan Update*  
(starting early 2022)



*28<sup>th</sup> Street/Little Portugal Station Design Development Framework (DDF)*  
(starting early 2022)



# Next Steps

- November CWG – update on access/circulation
- City and Agency review of Draft Request for Proposals (RFP)
- Release RFP for Contract Package 4
- Coordination between BSV, Contractor, VTA, and City on final design
  - City and VTA-led planning efforts including public engagement



# Questions



# Five Wounds Urban Villages Plan & 28<sup>th</sup> Street Design Development Framework

Charla Gomez, City of San José

Jessie O'Malley Solis, VTA



# 28<sup>th</sup> Street/Little Portugal: Upcoming Work

- Five Wounds Urban Village Update (lead: City of San José)
- 28<sup>th</sup> Street Design Development Framework (lead: VTA)
- Today's Discussion
  - Recent planning efforts
  - FTA Award
  - Urban Village Update
  - Design Development Framework
  - Anticipated Schedule





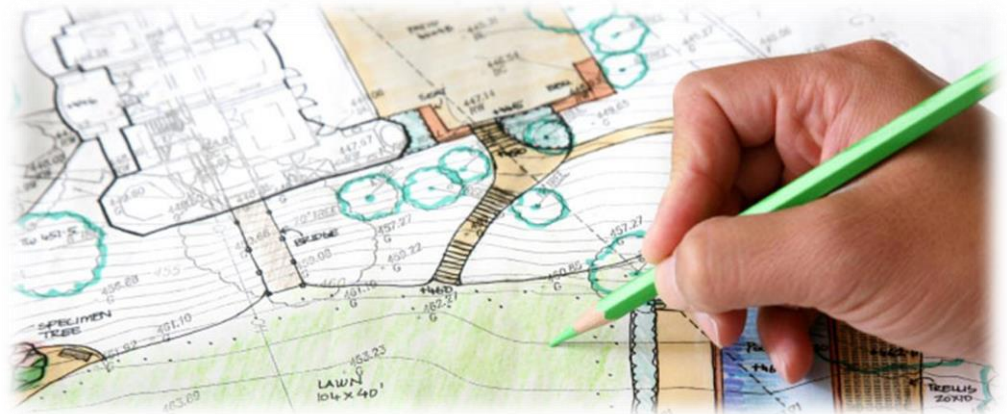
# Transit-Oriented Community Strategies

- [VTA's Transit Oriented Communities Strategy Study](#) (28<sup>th</sup> Street “Playbook”) completed 2019
- **Vision:** Vibrant, mixed-use, mixed-income, pedestrian-oriented
- **Recommendations:** New plans, policies, funding, and infrastructure investments
- **“Big Moves”** needed to establish successful TOC



# FTA Pilot Program for TOD Planning

- **Purpose:** provide funding to integrate land use and transportation planning with a new fixed guideway or core capacity transit capital investment.
- In June 2020, VTA awarded \$1.58 M + Local Match (20%) = \$1.8 M
- Funding will be directed to: FWUV Update, DDF, and Santa Clara Station Area Specific Plan



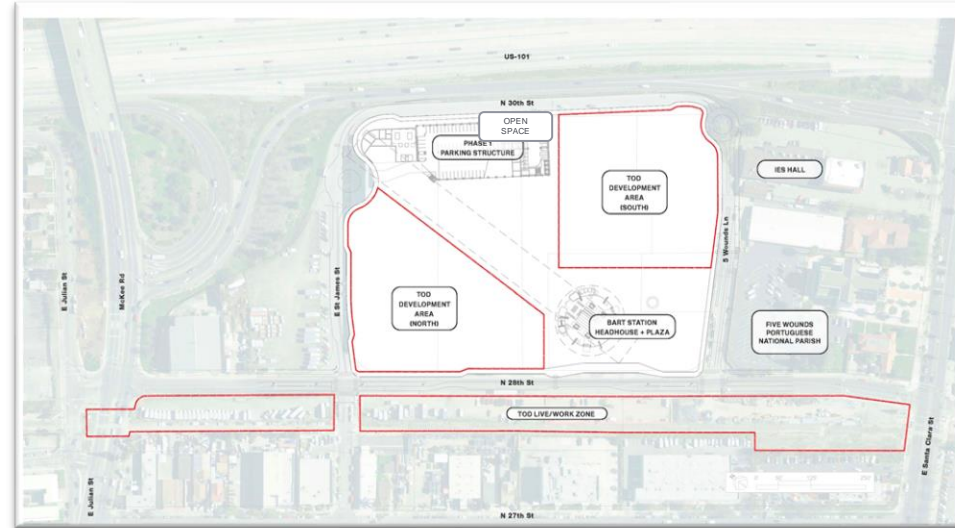
# Five Wounds Urban Villages Update

- Five Wounds Urban Village Plan (FWUVP) last updated in 2013
- Scope focus:
  - Small Business
  - Affordable Housing
  - Transportation
  - Stakeholder Engagement
- Study Area
  1. **Five Wounds**
  2. **Little Portugal**
  3. **Roosevelt Park**
  4. **24<sup>th</sup> & William**
  5. Alum Rock
  6. East Santa Clara Street
- Updates are specific for the four urban villages in bold
- Certain aspects, like transportation cover all six urban villages



# Design Development Framework

- **Focus:** VTA-owned property
- Structured framework for guiding developers and evaluating TOD proposals.
- Catalyze sustainable development and equitable economic opportunities.
- Optimize TOD outcomes to create flexible, sustainable, Transit-Oriented Communities.
- VTA implementation for FWUV
- Related efforts: Five Wounds Trail, BART Phase II, FWUV Update, En Movimiento Plan.



# Anticipated Schedule: FWUV Plan & 28<sup>th</sup> St. DDF



- Concurrent efforts
- Fall 2021: Procurement and consultant team selection
- Winter 2022: Project Kick-off
- Late 2023/Winter 2024: Project wrap-up

# Questions



# Community Engagement

Gretchen Baisa, VTA



# Business Resource Program Goals



Ensure business visibility and access during construction



Provide marketing and technical assistance to businesses near construction areas



Meet VTA's environmental commitments for BSVII



Ensure business support is commensurate with impacts



Support businesses as they prepare for opportunities provided by BSVII





# Progress Made to Date

## **JCL Consultants have done the following since June 2021:**

- Review of Project information
  - 2018 Final SEIS/SEIR
  - Small Business Resource Study
  - Construction Education & Outreach Plan
- Small business interviews along the corridor
- Small Business Task Force meetings (June & September)
- Briefings with City of San José Office of Economic Development
- Interviews with LA Metro and Orange County Transit Authority

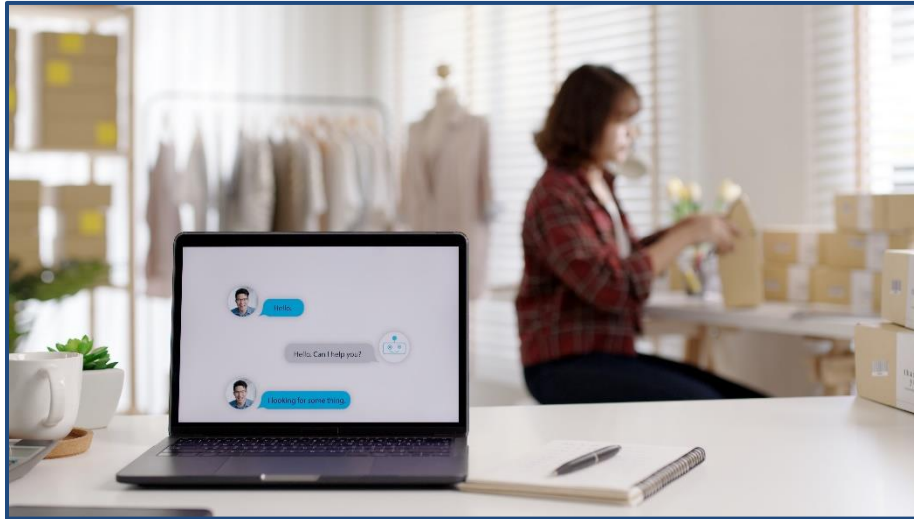


# Business Resource Program Draft Recommendations



*Note: Additional business support to be considered once construction means and methods defined by contractor*

# Virtual Business Solution Center



Establish a Virtual Business Solutions Center (VBSC) to build up the capacity of small businesses during construction:

- Partner with well-established local service provider(s)/CBO to deliver services to businesses
- Provide individualized, one-on-one technical support and assistance
- Use diverse, multilingual, door-to-door outreach approach
- Develop a robust web portal for 24/7 on demand access to information, tools, and resources



# Signage & Wayfinding



In close coordination with VTA Marketing, develop branding and designs for an engaging and vibrant outdoor wayfinding and signage campaign.

- Develop public-facing branding and logo
- Use local business images, landmarks, and art
- Maximize VTA-assets; staging areas, sound walls, and buildings
- Create and manage content calendar to plan and track activity



# VTA-Sponsored Shop Local Marketing Campaign



Public-facing marketing campaign designed to increase walk-in traffic and exposure for local retail businesses. Activities include VTA sponsored social media advertisements, coupon promotions, and fun community events to promote businesses. Campaign follows the path of construction, focusing resources on areas heaviest impacted.

- Customer facing website & business directory; newsletter
- Digital advertising: web banners, eblasts, streaming radio; targeted by location, language, age, demographics
- Targeted social media ads: Facebook, Instagram, YouTube, Pandora, Spotify, other
- Video series and professional photography

# Additional Business Support

Evaluate if additional business support resources are necessary once Progressive Design Build Contractor has determined construction means, methods, and phasing after Notice to Proceed is issued in April 2022.

- Meet with Progressive Design Build to analyze the intensity and duration of anticipated impacts
- Research potential funding sources
- Compile a list of qualified local Community Development Financial Institutions (CDFI)
- Present research and analysis to the VTA Board - Summer 2022



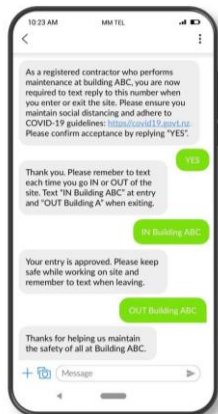
# Contract Specifications Update

- In preparation for construction and in response to business feedback, the BSV Outreach Team has written contract specifications in the following areas:
  - Early notification about construction activities
  - Construction outreach coordination
  - Additional outreach staff
  - Signage and wayfinding
  - Incident rapid notification
  - Project hotline, email, and stakeholder management
  - Beautification and aesthetic treatment of construction fencing



# Additional Outreach Efforts

- MyVTA (SMS alerts)
- Website update
- Fact sheets
- Milestone event planning
- Tabling at community events



**FACT SHEET: 28TH ST / LITTLE PORTUGAL STATION**

**28th Street / Little Portugal Station: At a Glance**

- 4,700 Weekly riders in 2010
- 8 Neighborhoods within walking distance
- 6 Schools surround the station
- Located in one of the region's largest Portuguese communities
- Connection to Future San Jose-Walnut Trail

VTA's BART Silicon Valley Phase II Extension (Phase II) Project is a six-mile, four-station extension of BART from Berryessa/408th San Jose Station (opened 2010) through downtown San Jose to the City of Santa Clara. The Phase II Project is planned to include an approximately five-mile subway, three stations with underground platforms (28th Street/Little Portugal, Downtown San Jose, and Diridon), one ground-level station (Santa Clara), a train maintenance and storage facility, and additional facilities.

**VTA's BART Silicon Valley Phase II Project**





# Save the Date for Public Meetings!

- 4 virtual meetings to be held in late October and early November
- Meetings will be held in English, Spanish, Vietnamese, and Portuguese
- Meeting dates to be determined by upcoming milestones
- Register for notification at [www.vta.org/bart](http://www.vta.org/bart)



# We Want to Meet with You!

- Later this fall, please invite us to your organization's meetings so we can inform your networks of all the project updates we shared with you all today!



# Questions



# CWG Member Report Back



# Report Back

- [Bill Rankin](#) *Friends of Five Wounds Trail*
- [Carlos Diaz](#) *Alum Rock Business Network*
- [Chris Patterson-Simmons](#) *East Santa Clara Street Business Association*
- [Cobán López](#) *Cristo Rey San José Jesuit High School*
- [Connie Alvarez](#) *Alum Rock Santa Clara Street Business Association*
- [Danny Garza](#) *Plata-Arroyo Neighborhood Association*
- [Davide Vieira](#) *Five Wounds Portuguese National Parish*
- [Elma Arredondo](#) *Alum Rock Urban Village Advocates (ARUVA)*
- [Eric Thacker](#) *Northside Neighborhood Association*
- [Helen Masamori](#) *Five Wounds / Brookwood Terrace Neighborhood Action Coalition*
- [Dee Barragan](#) *Roosevelt Park Neighborhood Association*
- [Justin Tríano](#) *Ride East Side San José (Ride ESSJ)*
- [Matt Gustafson](#) *Somos Mayfair*
- [Ricardo Agredano](#) *Portuguese Organization for Social Services and Opportunities (POSSO)*
- [Terry Christensen](#) *CommUniversity*



# Next Steps

- Next CWG meeting:  
November 17, 4:00 PM, Virtual Meeting
  - CWG Member Report Backs
  - Phase II Update
  - Station Access
  - Community Engagement
  - Real Estate & Transit-Oriented Development
  
- Action Items