

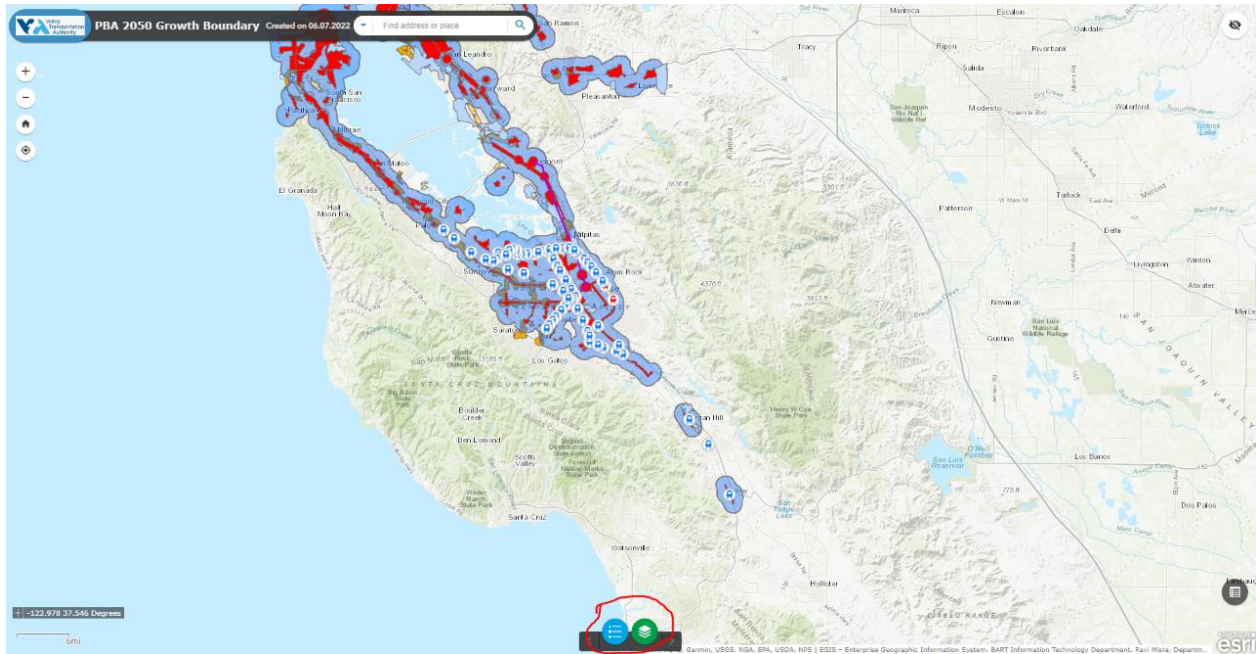
## GROWTH GEOGRAPHIES MAP LINKS

### INTERACTIVE MAPPING TOOL (VTA):

<https://vta.maps.arcgis.com/apps/webappviewer/index.html?id=3d05e68823e641d1b099ce327928a4cc>

### **Instructions:**

On the bottom of the tool (see the red circle area), you can use these two widgets to turn on/off layers, and view the legend.



## GROWTH GEOGRAPHIES DEFINITIONS

### **Priority Development Area (PDA)**

Locally and voluntarily identified locations within existing communities that present infill development opportunities, and are easily accessible to transit, jobs, shopping and services.

There are two types of PDAs:

- **Transit-Rich PDAs** have high-quality transportation infrastructure already in place to support additional growth in their communities
- **Connected Community PDAs** offer basic transit services and have committed to policies that increase mobility options and reduce automobile travel

PDA Map (MTC):

<https://opendata.mtc.ca.gov/datasets/priority-development-areas-plan-bay-area-2050/explore?location=37.895631%2C-122.289021%2C9.42>

PDA One-Mile Buffer Map (MTC):

<https://opendata.mtc.ca.gov/datasets/pba-2050-priority-development-areas-one-mile-buffer/explore?location=37.895516%2C-122.289245%2C9.39>

## **GROWTH GEOGRAPHIES MAP LINKS**

### ***Transit-Rich Area (TRA)***

Areas near rail, ferry or frequent bus service that were not already identified as PDAs, in jurisdictions that have not nominated at least 50 percent of their PDA-eligible lands. Specifically, these are areas within 1/2 mile of either an existing rail station or ferry terminal (with bus or rail service), a bus stop with peak service frequency of 15 minutes or less, or a planned rail station or planned ferry terminal (with bus or rail service).

### ***Priority Production Area (PPA)***

Locally identified places for job growth in middle-wage industries like manufacturing, logistics or other trades. An area must be zoned for industrial use or have a predominantly industrial use to be a PPA.