



FACT SHEET: Highways

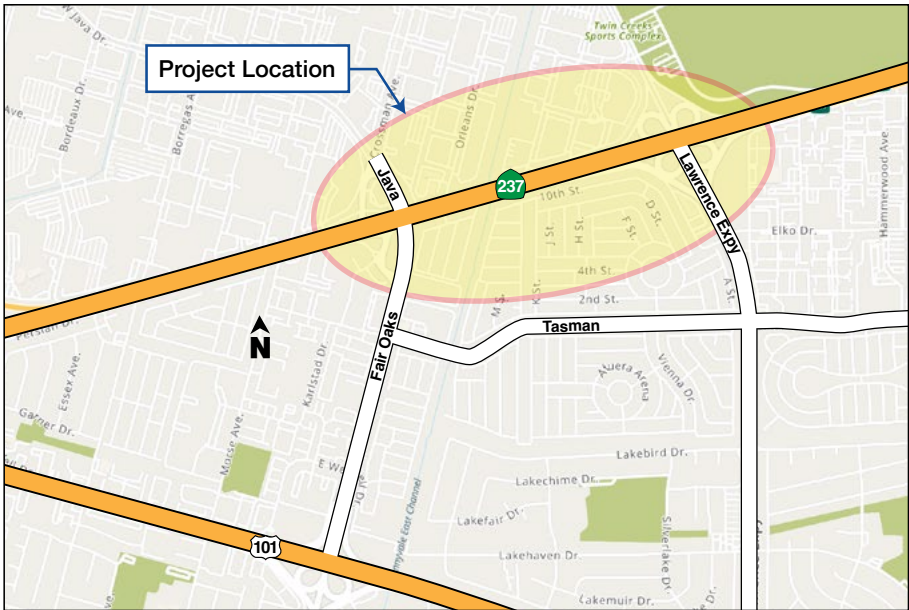
SR 237/Lawrence Expy/Java Drive Interchanges Improvement Project

Overview

The Santa Clara Valley Transportation Authority (VTA), in cooperation with the City of Sunnyvale and the California Department of Transportation (Caltrans), proposes to modify the SR 237/Lawrence Expressway and SR 237/Java Drive interchanges on State Route 237 (SR 237) in the City of Sunnyvale (City).

Objectives

The purpose of this project is to improve local traffic circulation, enhance roadway safety, and implement Complete Streets elements and improve bicycle and pedestrian connectivity by modifying the SR 237/Lawrence Expressway and SR 237/Java Drive interchanges; modifying existing on- and off-ramps to and from SR 237, and upgrading local roadways to existing standards.



Project Features

- The proposed improvements include, but are not limited to the following:
- Widen existing bridges to improve traffic operation and accommodate complete streets features.
 - Modify existing on-ramps and off-ramps at Lawrence Expressway and Java Drive interchanges.
 - Modify existing local street intersections and upgrade bicycle and pedestrian facilities along Lawrence Expressway and Java Drive, including bridge widening when applicable.
 - Construct retaining walls and sound walls as needed.

Project Schedule

Alternatives Analysis/Preliminary Engineering	2022 – 2023
Environmental Approval*	2024 – 2025
Design Completion*	2025 – 2028
Project Construction*	2028 – 2031

* Funding for these phases of the project has not yet been identified. Schedule is subject to change and contingent on funding availabilities.

Project Cost/Funding

The project cost is estimated to be between \$70 million and \$75 million which would be determined through the process to develop the final improvements. The project is proposed to be funded by a combination of private, local, state, and federal funds as available.

Project Partners



How to Reach Us

VTA's Community Outreach
 (408) 321-7575
 (408) 321-2330 TTY
www.vta.org
community.outreach@vta.org