

Ask VTA: Land Use and Transit Oriented Development

August 7, 2023

Today's Agenda

- Welcome
- Meet VTA Staff
- Getting to know you and how you get around
- VTA's Role in Santa Clara County
- Land Use Transportation Integration Program
- Transit Oriented Communities Program
- **Ask VTA: Questions and Discussion**
- Thank you



Participating Staff

- Melissa Cerezo – Program Manager, Land Use Transportation Integration
- Jessie O'Malley Solis – Manager, Transit Oriented Development Program
- Kathleen Podrasky & Gretchen Baisa – Community Outreach and Public Engagement

Quick Poll:

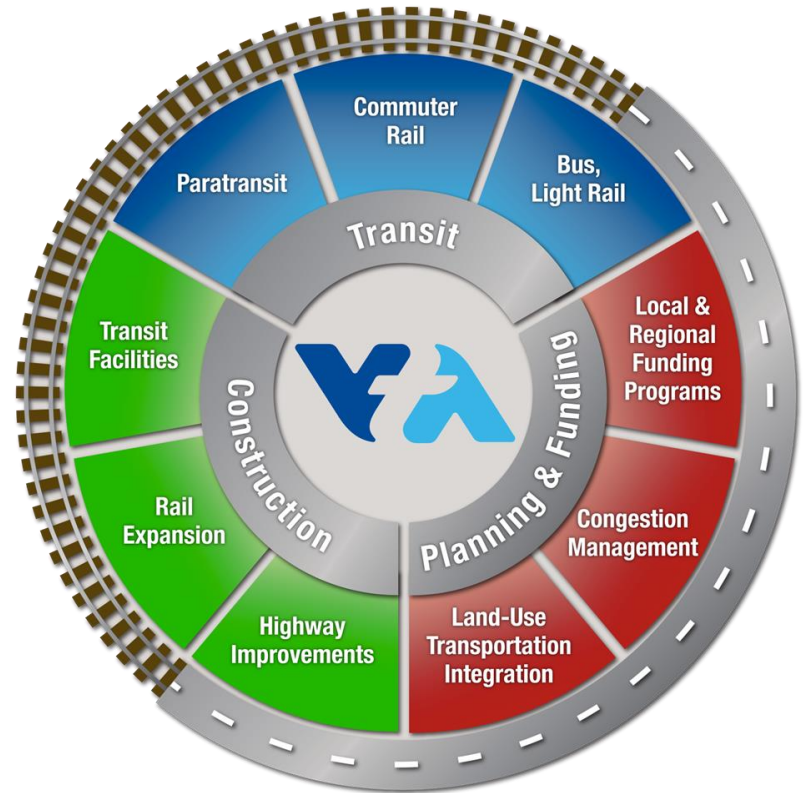
How do you get around Santa Clara County?



VTA's Role in Santa Clara County

VTA is more than buses and light rail. As the County Transportation Agency, we also:

- Act as a funding conduit for local cities and other agencies
- Design and build transit facilities, highway improvements, and expand rail service
- Plan for congestion management and land-use
- Design, build and own BART to Silicon Valley infrastructure in Santa Clara County



VTA's Land Use Transportation Integration Program

Objective

Strengthen coordination of land use and transportation with local jurisdictions and the development community by promoting equitable and sustainable development and expanding mobility options.

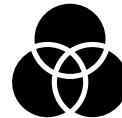
Values



Equity



Partnership



Sustainability



Resilience

Roles: VTA's Land Use Transportation Integration Program

Roles

- Local jurisdiction land use coordination
- Transportation Impact Analysis (TIA) review
- California Environmental Quality Act (CEQA) review
- Transit Oriented Communities (TOC) program coordination and planning

Plan Bay Area 2050

In Santa Clara County by 2050:

- 430,000 new households
- 580,000 new jobs

Most of the projected growth can be accommodated on existing transit corridors

Transit-Oriented Communities =
fewer impacts
+ lower housing & transportation costs



Transit-Oriented Communities: TOD Throughout the County

- Opportunities to connect housing, jobs, learning, recreation, shopping: **15-Minute Cities**
- Aligns with MTC's TOC Policy and funding for mixed-use and mixed-income communities, reduces GHGs, increases transit ridership
- Focuses growth along current and future transit corridors and stations
- VTA supports cities' efforts to advance Transit-Oriented Communities



Stations Anchor 15-Minute Cities

- All your essential needs within 15-minutes by walking, bike, transit and micro mobility
- No need to rely on a car to thrive
- Connected corridors of:

sustainable, healthy,
prosperous, walkable
& equitable people places
to live, work, learn,
shop and play



VTA-Local Jurisdiction Partnership

Transit Agency

City Transportation Departments

City/ Transit Agency Partnership



From NACTO publication *Move that Bus!*

Transit-Oriented Communities Planning & Projects



- **Campbell**
 - Winchester Station Area Planning
- **Mountain View**
 - Middlefield Park Master Plan
- **Santa Clara**
 - Santa Clara Station Area Plan
- **City of San Jose**
 - Five Wounds Urban Village Plan
 - Google Downtown West
- **Sunnyvale**
 - Google Sunnyvale Campus

Transit-Oriented Communities

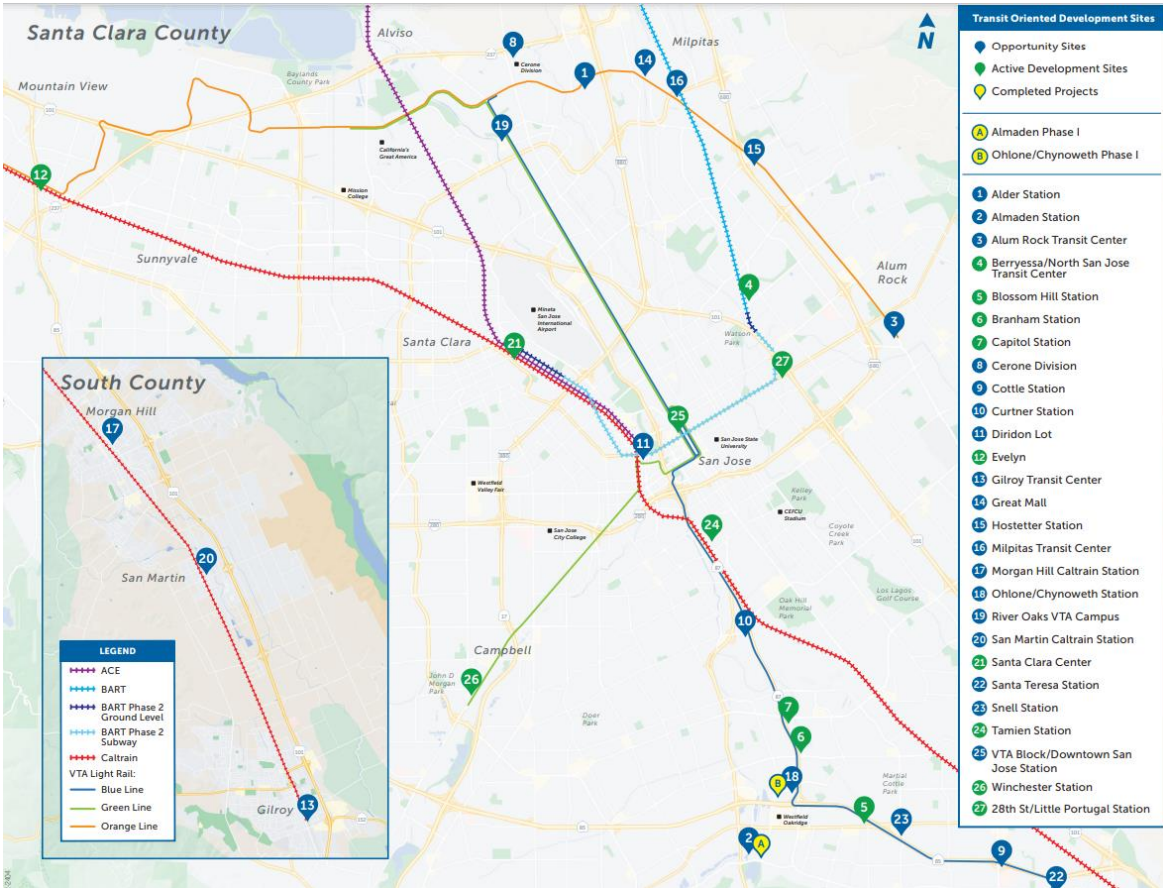


Advancing VTA's Countywide Mission:

- Ridership Growth
- Catalyze Transit-Oriented Communities
- Long-term stable revenue
- Address regional affordable housing need

For more information visit (or Google):

- [TOC Policy](#) (updated 2022)
- [TOD Portfolio](#)



TOC Affordable Housing Policy

Individual mixed-use sites:

- 25%+ of housing units will be affordable (\leq 60% AMI)

Portfolio wide goal:

- 40%+ of housing units will be affordable (\leq 60% AMI)
- Half of all affordable units will be targeted for households making 50% AMI and below
- Negotiate for deeper affordability, more family-sized units



VTA TOD: Housing Production

Development Type	Units	Affordable Units ≤ 60% AMI
TOD Projects (2000 and earlier)	444 units	244 units (55%)
Predevelopment/ Preconstruction	1,600 units	960 units* (60%)

**Permanent supportive housing (PSH) and rapid re-housing (RRH) represent up to 160 of these units*

VTA Affordable Housing Developments



Tamien Station

420 Market Rate Units
135 Affordable Units
Groundbreaking: 2023



Blossom Hill Station

239 Market Rate Units
89 Affordable Units
Estimated groundbreaking: 2024



Evelyn Station

188 Affordable Units

Partnership with City of Mountain View
Ground Lease Executed

VTA-SCC Office of Supportive Housing Partnership Sites



Capitol Station
203 Affordable Units
Phase: Developer Selected



Branham Station
44 Affordable Homeownership Units
Phase: Feasibility Collaboration

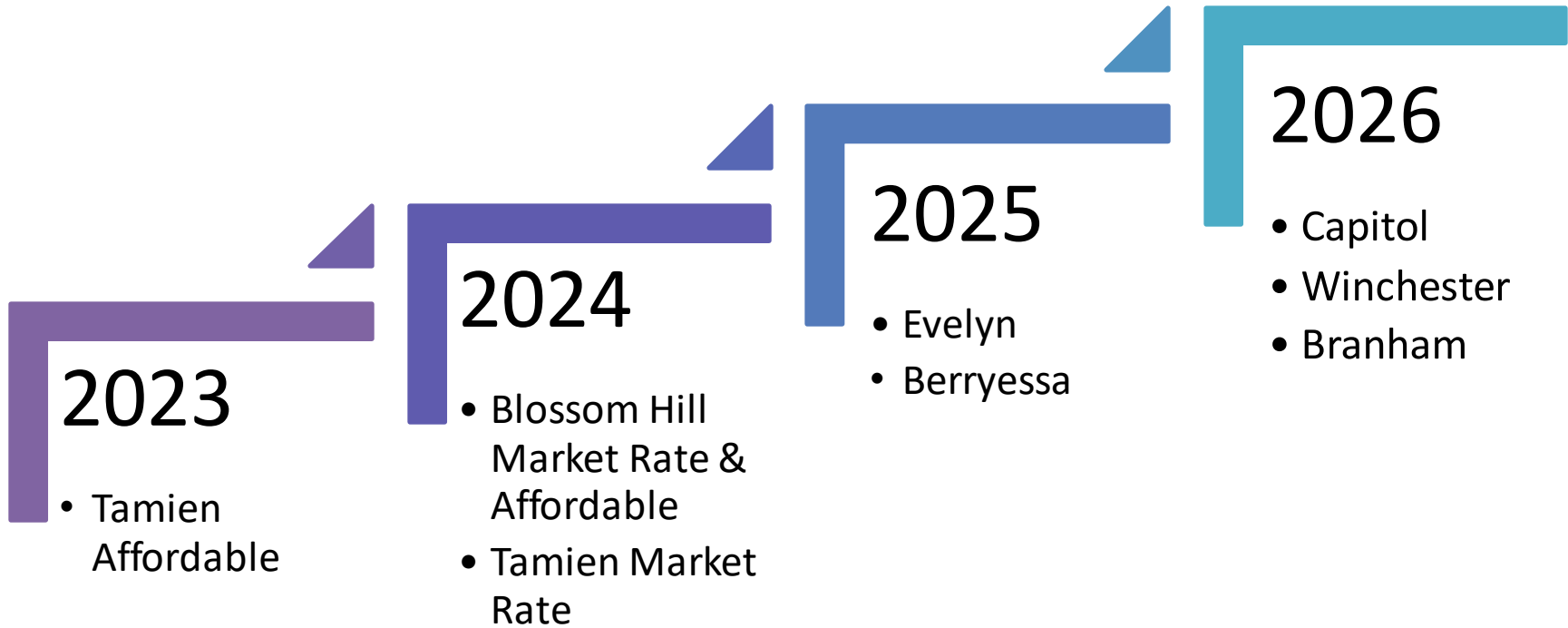


Berryessa Station
195 Affordable Units
Phase: Developer Selected



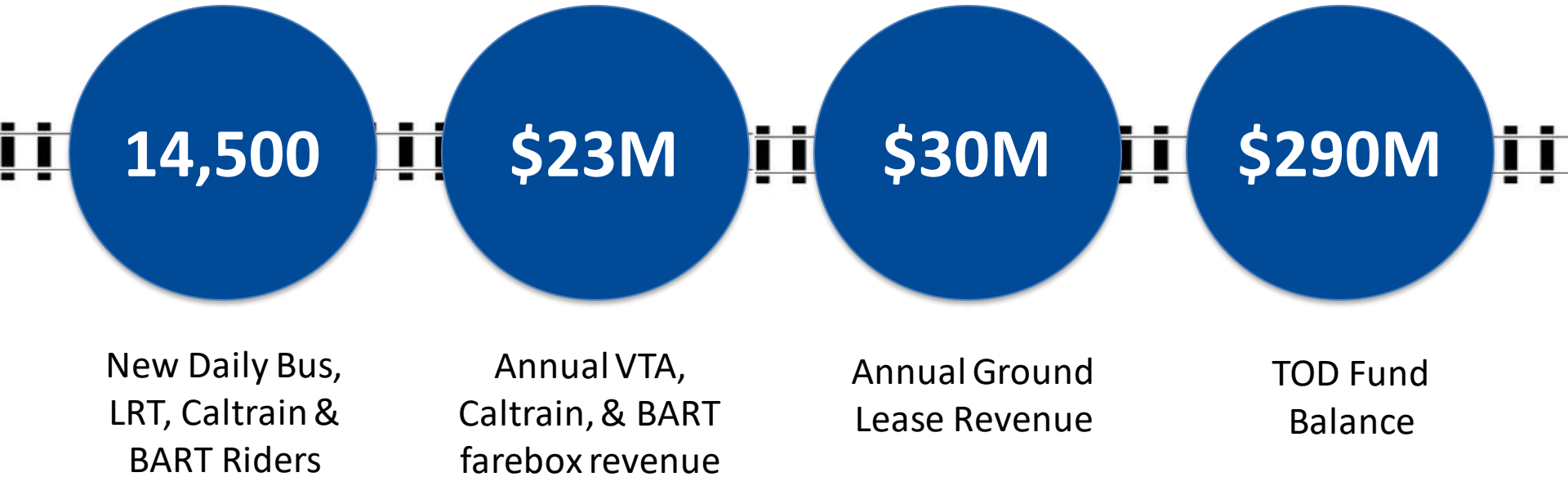
Winchester Station
106 Affordable Units
Phase: Developer Selected

Projected Groundbreaking Schedule



Note: Market Rate dates are approximate due to market feasibility.

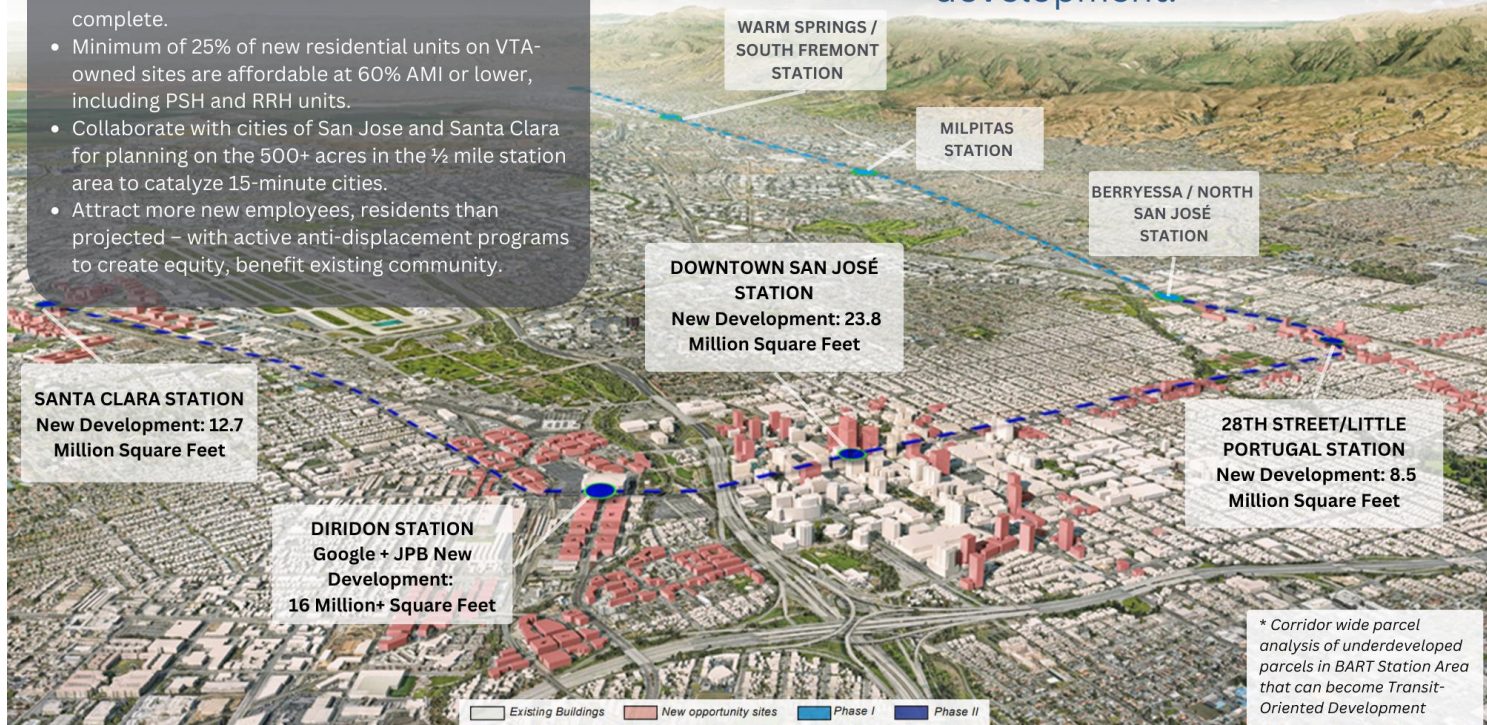
TOD Portfolio at Buildout



The Transit-Oriented Communities Opportunity

The entire corridor has the potential for approximately **60 Million Square Feet** of new development.*

- Nearly 3 million square feet of new mixed-use, mixed-income development on VTA-owned sites around BART stations after construction is complete.
- Minimum of 25% of new residential units on VTA-owned sites are affordable at 60% AMI or lower, including PSH and RRH units.
- Collaborate with cities of San Jose and Santa Clara for planning on the 500+ acres in the ½ mile station area to catalyze 15-minute cities.
- Attract more new employees, residents than projected – with active anti-displacement programs to create equity, benefit existing community.



Transit-Oriented Communities Fund

Annual TOC Grant Fund of \$750,000

- Focus Areas:
 - Education & Equitable Engagement
 - Jurisdiction Planning/Funding support
 - Preservation Pilot: Technical Assistance
 - Placemaking, Arts & Activation

NOFA goals to be approved by VTA Board before the end of the Calendar year



Today's Format

Ask VTA has been developed as a chance for the public to have a deeper discussion about the projects and programs that VTA delivers for the residents of Santa Clara County.

Today's Topic: Land Use and Transit Oriented Development

We're here to answer questions about:

- VTA's Current Transit Oriented Development Projects
- How VTA Coordinates with other jurisdictions
- VTA's Vision for Transit Oriented Communities and how to make them happen
- How to ensure that growth is sustainable
- Reducing the amount of driving (Vehicle Miles Traveled) from development



Thank you!

Join us for future Ask VTA sessions!

www.vta.org/ask-vta

For questions, comments or topic suggestions, email
community.outreach@vta.org