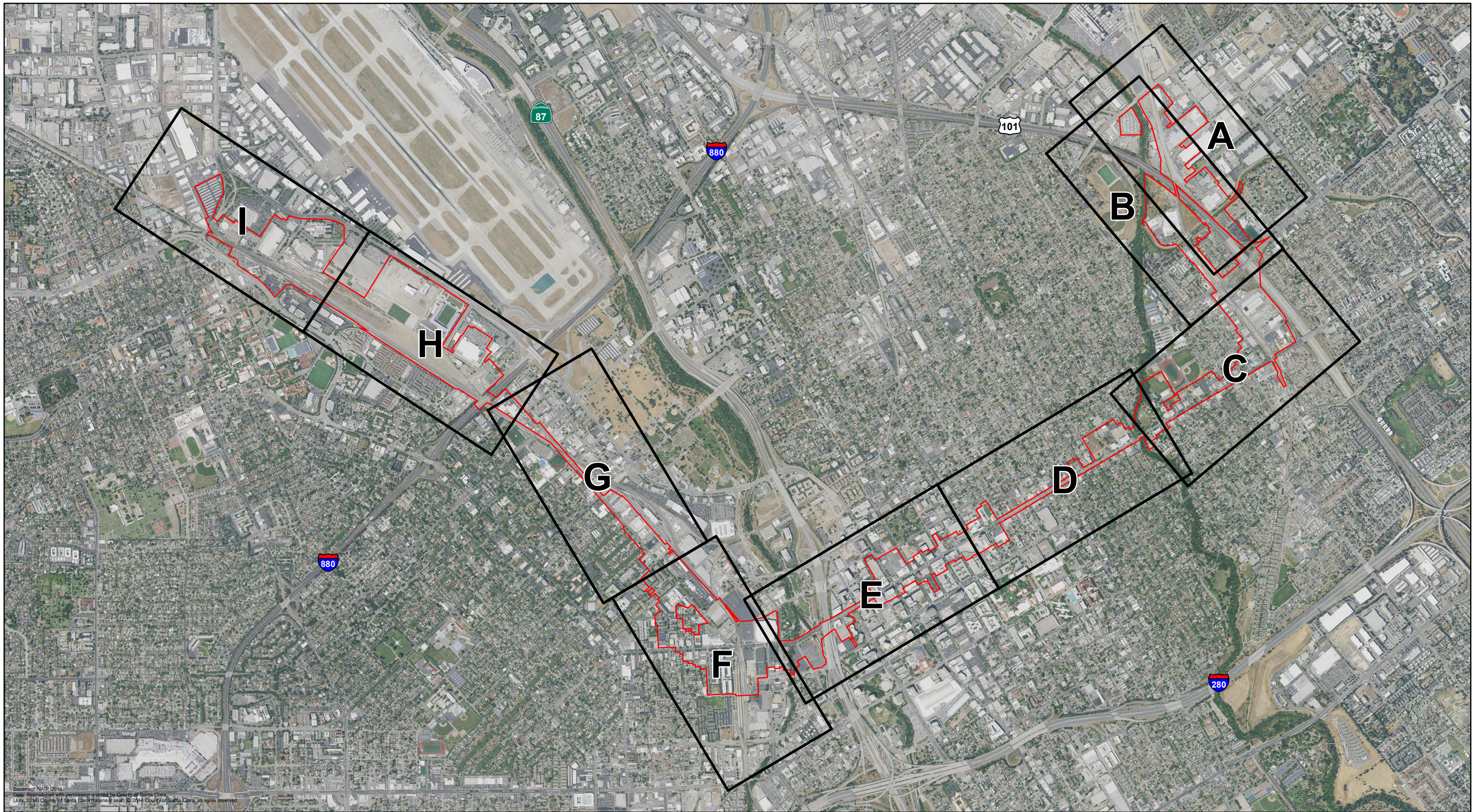


Appendix D

Cultural Resources

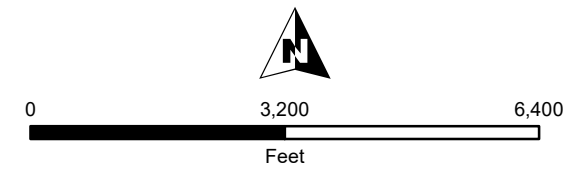
Area of Potential Effects for Architectural Resources

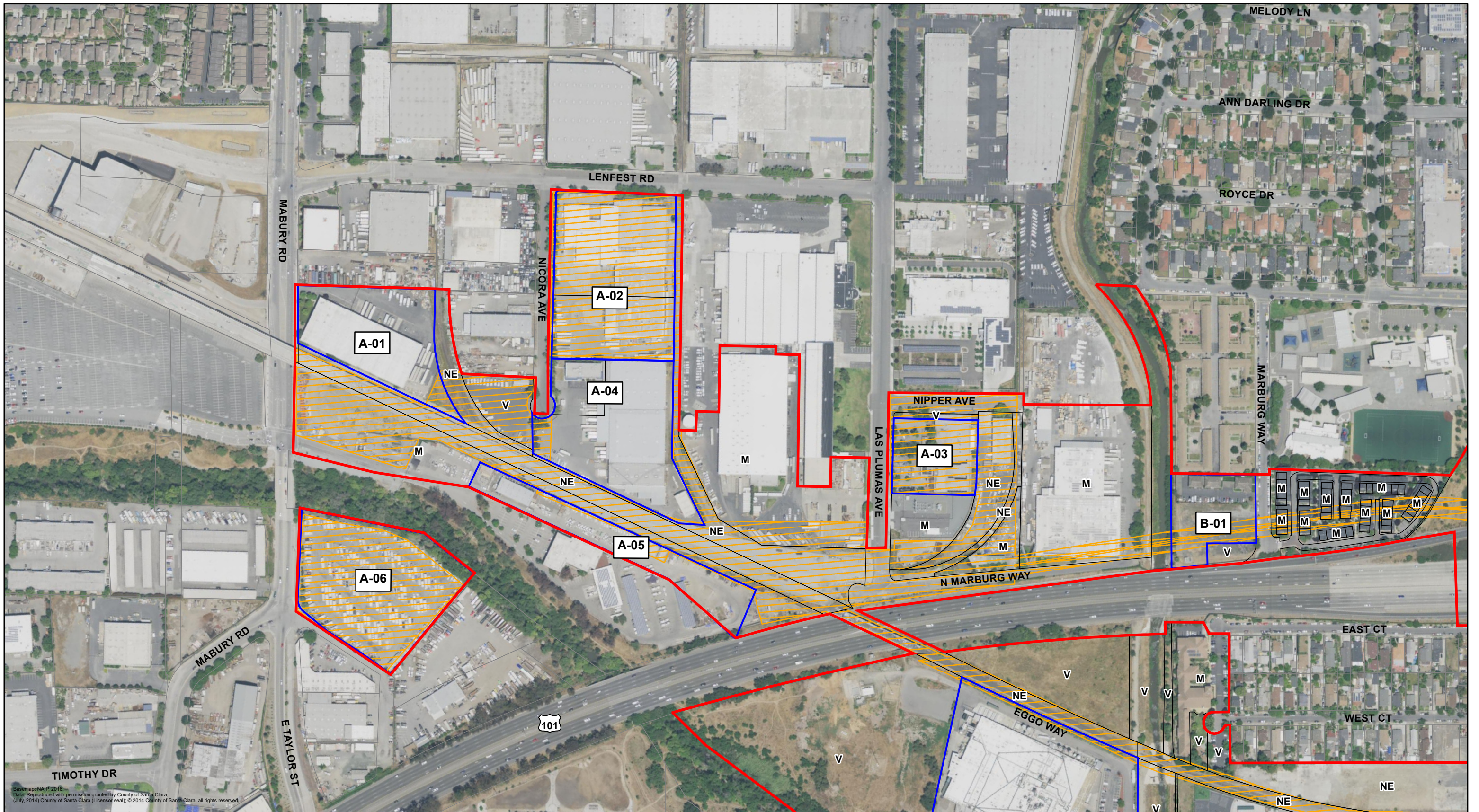


Basemap: NAIP 2016.
Data: Reproduced with permission granted by County of Santa Clara.
(July, 2014) County of Santa Clara (blanca) seal, © 2014 County of Santa Clara, all rights reserved.

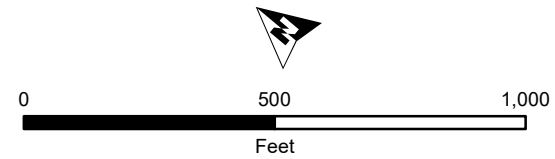
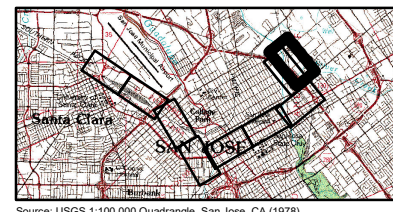
Architectural APE: INDEX

 Architectural APE  Map Sheet





Base map: NAIP, 2016.
 Data: Reproduced with permission granted by County of Santa Clara.
 (July, 2014) County of Santa Clara (Licensor seal), © 2014 County of Santa Clara, all rights reserved.



- Architectural APE
- Historic District
- Project Footprint

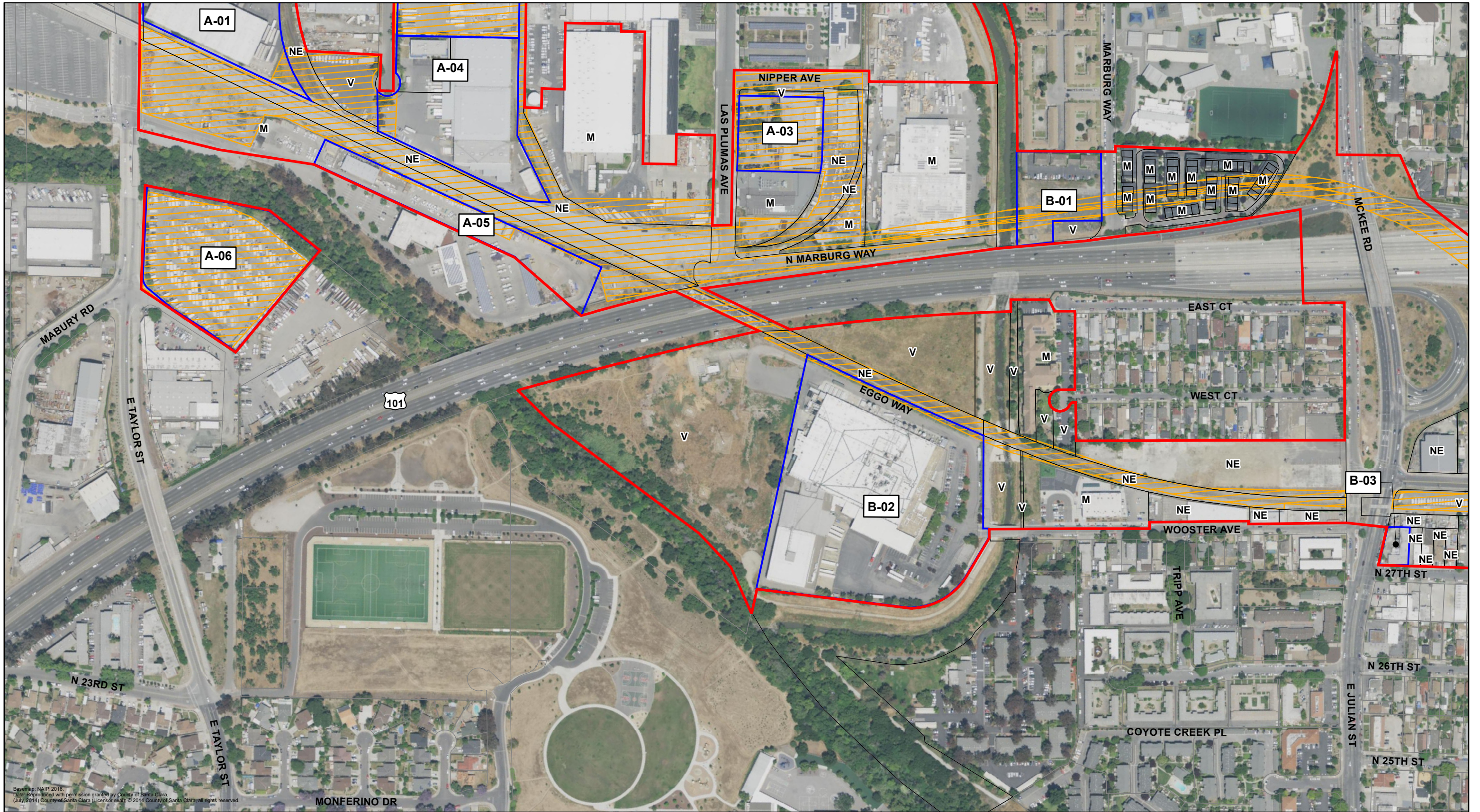
- A-01 Map Reference Number (Eligible)
Eligible for or listed in the NRHP and CRHR as per current survey
- A-01 Map Reference Number (Eligible)
Previously determined eligible for or listed in the NRHP and CRHR per 2003 HRER

- A-01 Map Reference Number (CEQA only)
Historical Resource for the purposes of CEQA only
- A-01 Map Reference Number (Not Eligible)
Not eligible for listing in NRHP or CRHR as per current survey

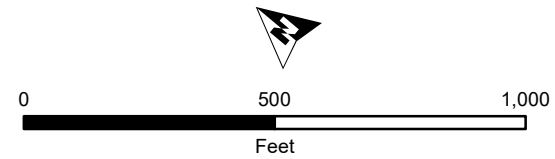
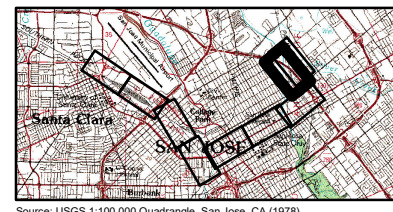
Architectural APE: Sheet A

V = Vacant
 M = Modern (built after 1975)
 NE = Previously Determined Not Eligible with SHPO Concurrence (2003)

Source: USGS 1:100,000 Quadrangle, San Jose, CA (1978).



Basemap: NAIP 2016
 Data: Reproduced with permission granted by County of Santa Clara
 (July 2014) County of Santa Clara (License: sear). © 2014 County of Santa Clara; all rights reserved.



- Architectural APE
- Historic District
- Project Footprint

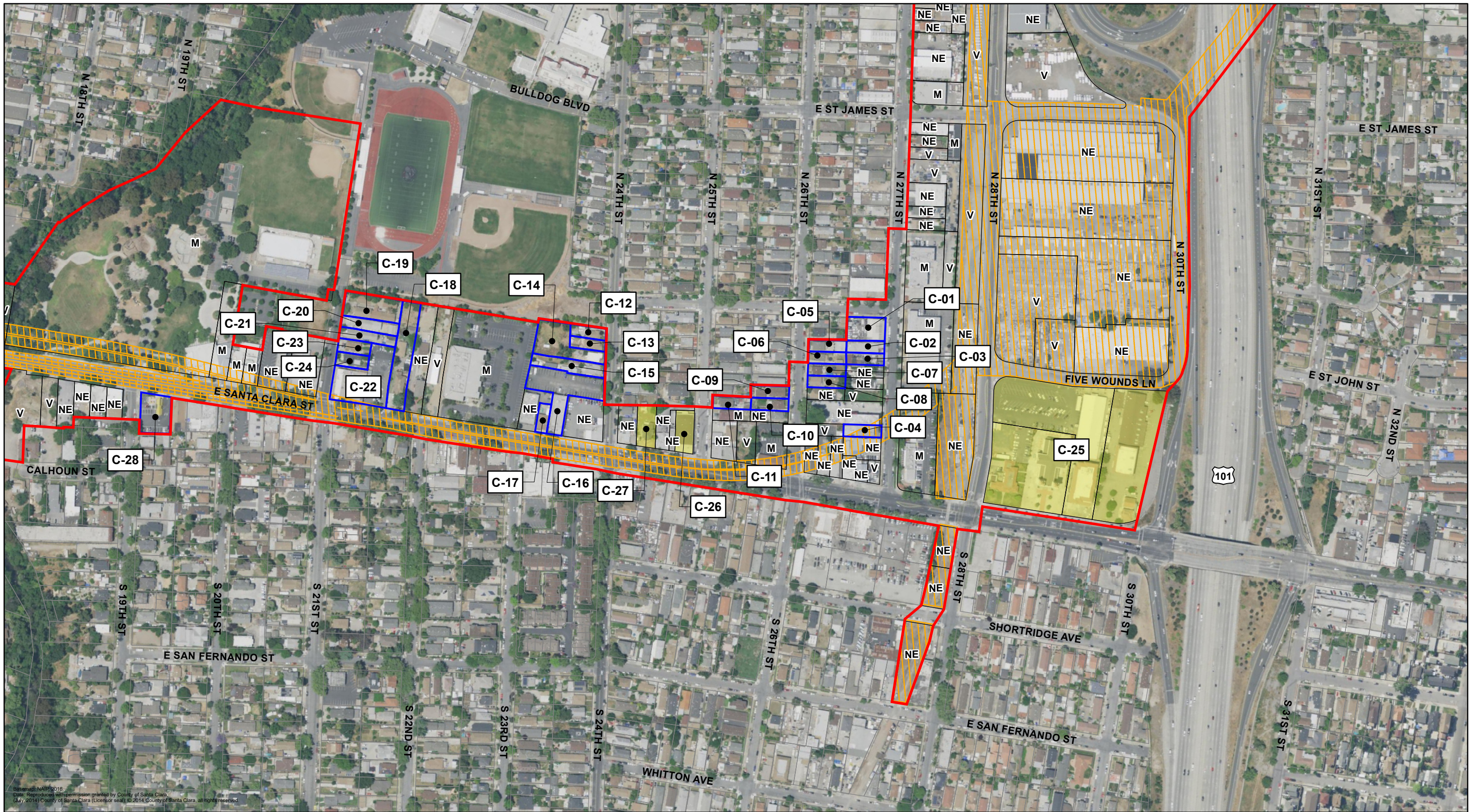
- B-01 Map Reference Number (Eligible)
Eligible for or listed in the NRHP and CRHR as per current survey
- B-01 Map Reference Number (Eligible)
Previously determined eligible for or listed in the NRHP and CRHR per 2003 HRER

- B-01 Map Reference Number (CEQA only)
Historical Resource for the purposes of CEQA only
- B-01 Map Reference Number (Not Eligible)
Not eligible for listing in NRHP or CRHR as per current survey

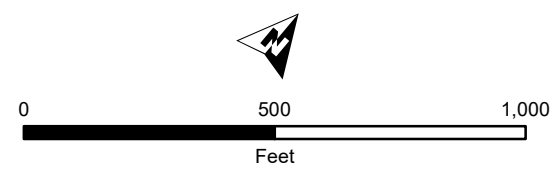
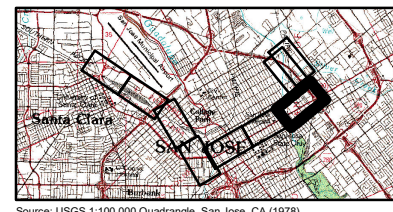
Architectural APE: Sheet B

V = Vacant
 M = Modern (built after 1975)
 NE = Previously Determined Not Eligible with SHPO Concurrence (2003)

Source: USGS 1:100,000 Quadrangle, San Jose, CA (1978).



Base map: NAIP 2016.
 Data: Reproduced with permission granted by County of Santa Clara (July 2014) County of Santa Clara (Licensor seal) © 2014 County of Santa Clara, all rights reserved.



- Architectural APE
- Historic District
- Project Footprint

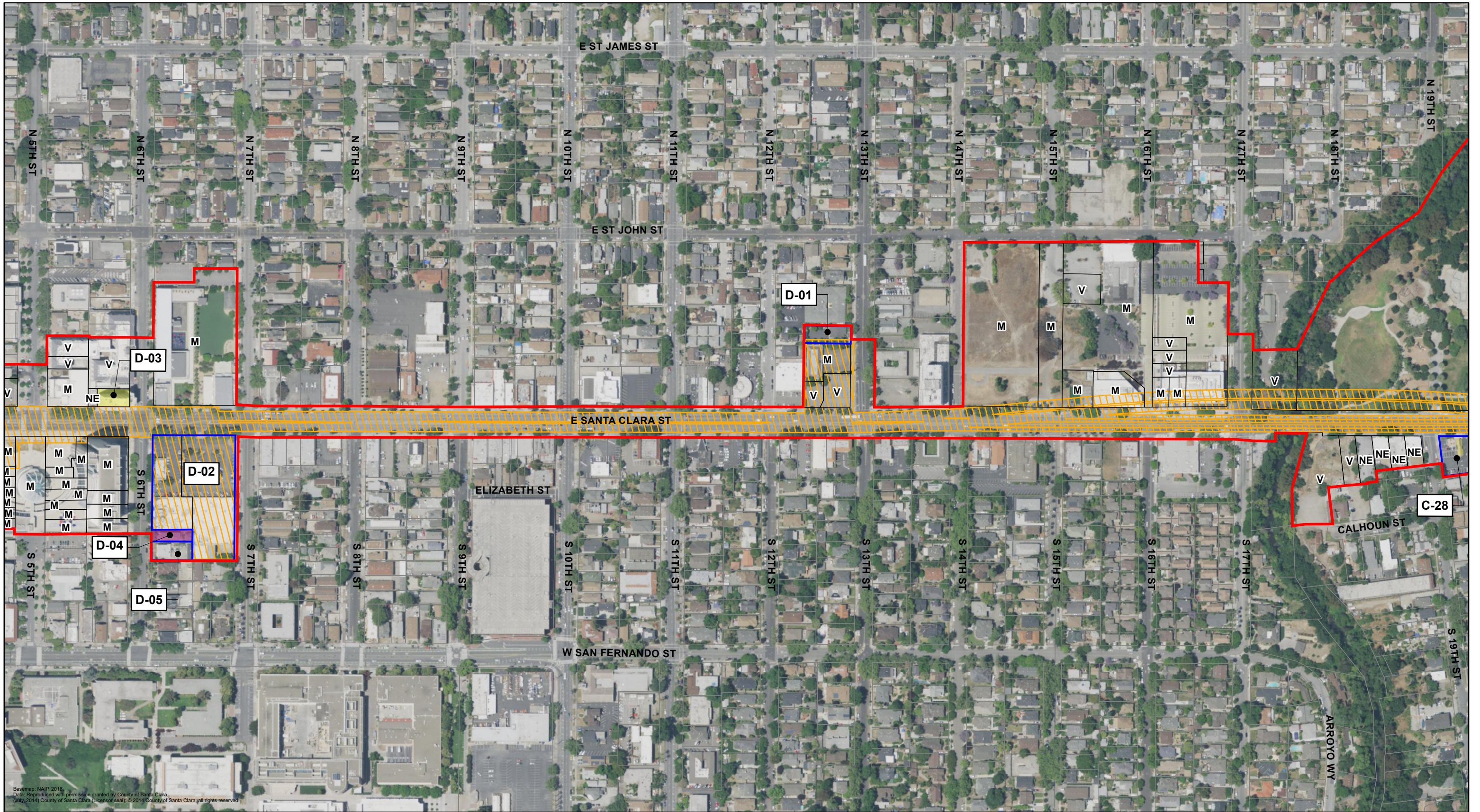
- C-01 Map Reference Number (Eligible)
Eligible for or listed in the NRHP and CRHR as per current survey
- C-01 Map Reference Number (Eligible)
Previously determined eligible for or listed in the NRHP and CRHR per 2003 HRER

- C-01 Map Reference Number (CEQA only)
Historical Resource for the purposes of CEQA only
- C-01 Map Reference Number (Not Eligible)
Not eligible for listing in NRHP or CRHR as per current survey

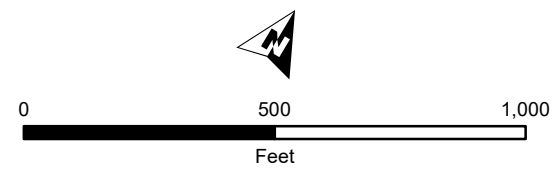
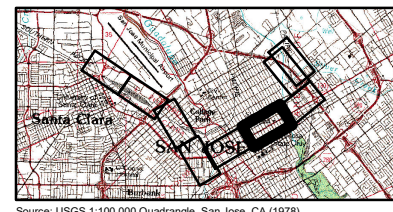
Architectural APE: Sheet C

V = Vacant
 M = Modern (built after 1975)
 NE = Previously Determined Not Eligible with SHPO Concurrence (2003)

Source: USGS 1:100,000 Quadrangle, San Jose, CA (1978).



Basemap: NAIP, 2016.
 Data: Reproduced with permission granted by County of Santa Clara.
 (July, 2014) County of Santa Clara (Basemap seal). © 2014 County of Santa Clara, all rights reserved.



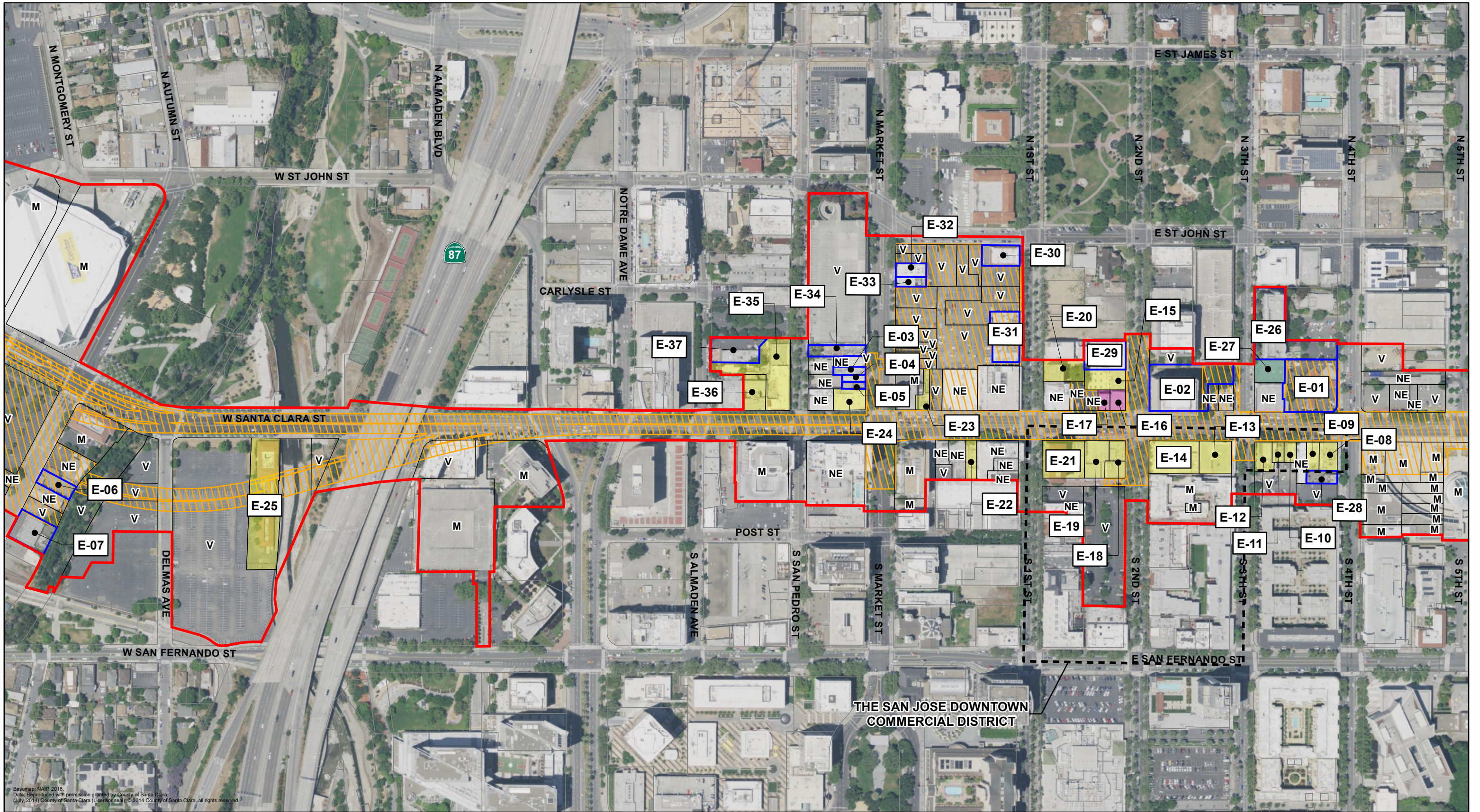
- Architectural APE
- Historic District
- Project Footprint

- D-01 Map Reference Number (Eligible)
Eligible for or listed in the NRHP and CRHR as per current survey
- D-01 Map Reference Number (Eligible)
Previously determined eligible for or listed in the NRHP and CRHR per 2003 HRER

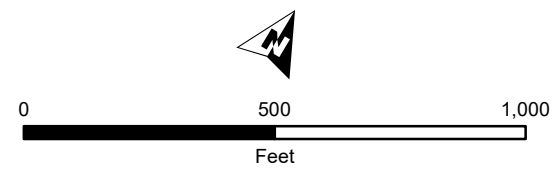
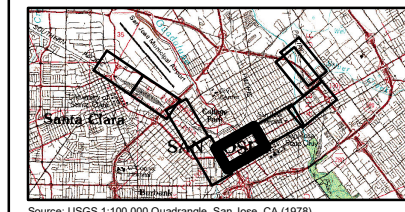
- D-01 Map Reference Number (CEQA only)
Historical Resource for the purposes of CEQA only
- D-01 Map Reference Number (Not Eligible)
Not eligible for listing in NRHP or CRHR as per current survey

Architectural APE: Sheet D

V = Vacant
 M = Modern (built after 1975)
 NE = Previously Determined Not Eligible with SHPO Concurrence (2003)



Base map: NAIP 2016.
 Data: Reproduced with permission granted by County of Santa Clara.
 (July, 2014) County of Santa Clara (License: seal) © 2014 County of Santa Clara, all rights reserved.



- Architectural APE
- Historic District
- Project Footprint

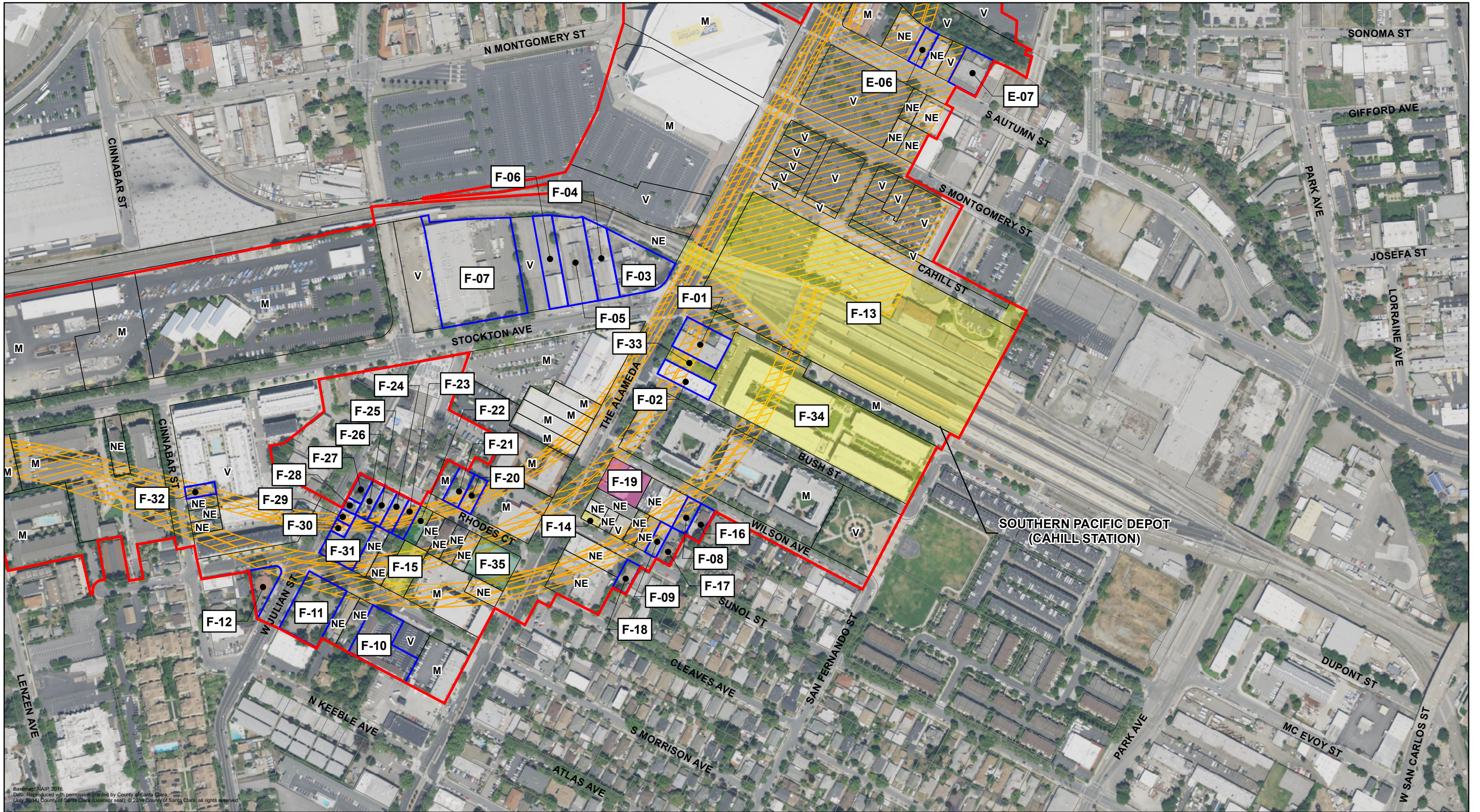
- E-01 Map Reference Number (Eligible)
Eligible for or listed in the NRHP and CRHR as per current survey
- E-01 Map Reference Number (Eligible)
Previously determined eligible for or listed in the NRHP and CRHR per 2003 HRER

- E-01 Map Reference Number (CEQA only)
Historical Resource for the purposes of CEQA only
- E-01 Map Reference Number (Not Eligible)
Not eligible for listing in NRHP or CRHR as per current survey

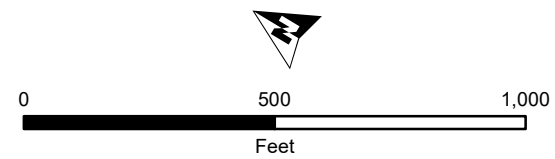
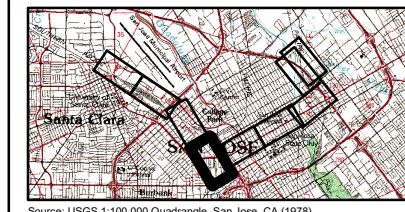
Architectural APE: Sheet E

V = Vacant
 M = Modern (built after 1975)
 NE = Previously Determined Not Eligible with SHPO Concurrence (2003)

Source: USGS 1:100,000 Quadrangle, San Jose, CA (1978).



Basemap: NAIP, 2016.
 Data: Reproduced with permission granted by County of Santa Clara (July, 2014) County of Santa Clara (Licensor seal), © 2014 County of Santa Clara, all rights reserved.



- Architectural APE
- Historic District
- Project Footprint

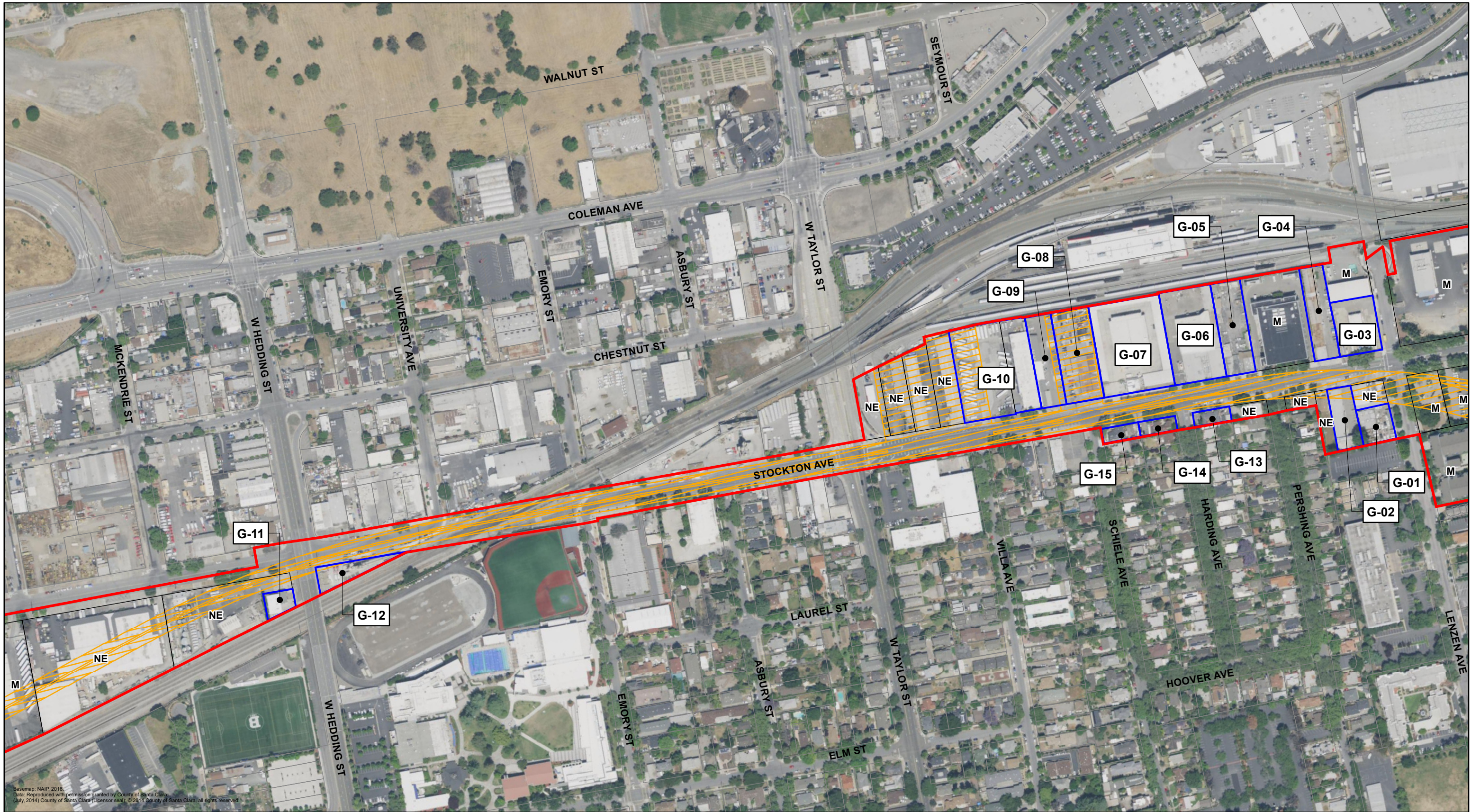
- F-01 Map Reference Number (Eligible)
Eligible for or listed in the NRHP and CRHR as per current survey
- F-01 Map Reference Number (Eligible)
Previously determined eligible for or listed in the NRHP and CRHR per 2003 HRER

- F-01 Map Reference Number (CEQA only)
Historical Resource for the purposes of CEQA only
- F-01 Map Reference Number (Not Eligible)
Not eligible for listing in NRHP or CRHR as per current survey

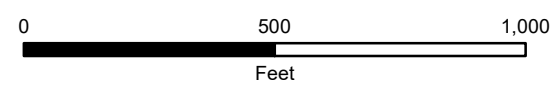
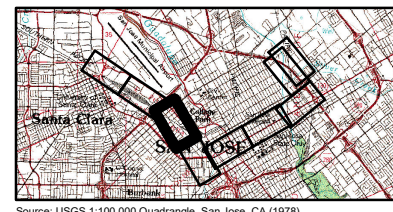
Architectural APE: Sheet F

V = Vacant
 M = Modern (built after 1975)
 NE = Previously Determined Not Eligible with SHPO Concurrence (2003)

Source: USGS 1:100,000 Quadrangle, San Jose, CA (1978).



Basemap: NAIP, 2016.
 Data: Reproduced with permission granted by County of Santa Clara
 (July, 2014) County of Santa Clara (Licensor seal). © 2014 County of Santa Clara, all rights reserved.



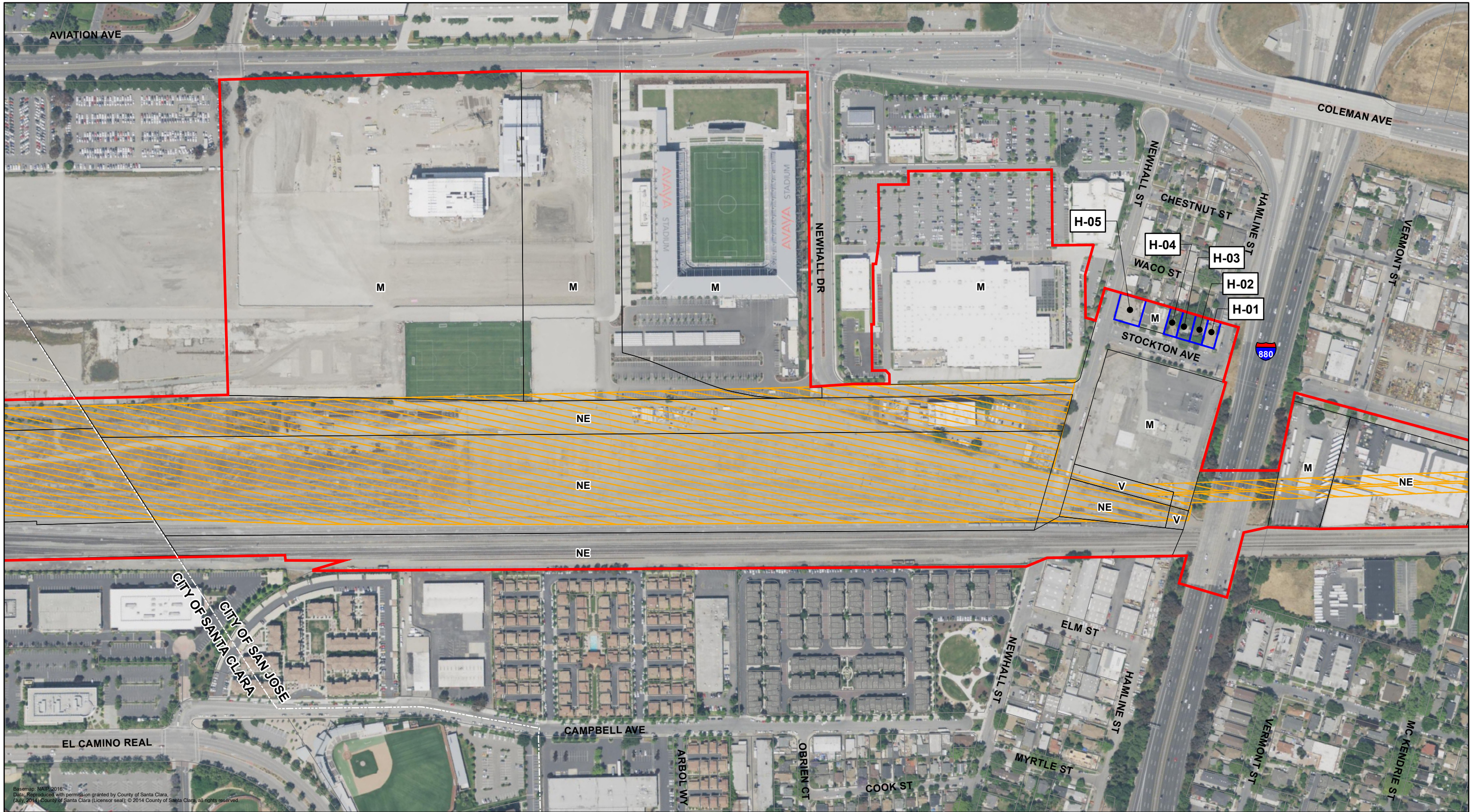
- Architectural APE
- Historic District
- Project Footprint

- G-01 Map Reference Number (Eligible)
Eligible for or listed in the NRHP and CRHR as per current survey
- G-01 Map Reference Number (Eligible)
Previously determined eligible for or listed in the NRHP and CRHR per 2003 HRER

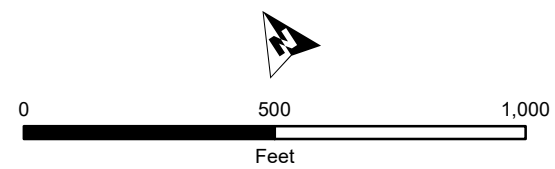
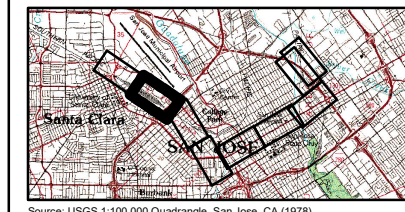
- G-01 Map Reference Number (CEQA only)
Historical Resource for the purposes of CEQA only
- G-01 Map Reference Number (Not Eligible)
Not eligible for listing in NRHP or CRHR as per current survey

Architectural APE: Sheet G

V = Vacant
 M = Modern (built after 1975)
 NE = Previously Determined Not Eligible with SHPO Concurrence (2003)



Basemap: NAIP, 2016.
 Data: Reproduced with permission granted by County of Santa Clara.
 (July, 2014) County of Santa Clara (Licensor seal), © 2014 County of Santa Clara, all rights reserved.



- Architectural APE
- Historic District
- Project Footprint

- H-01 Map Reference Number (Eligible)
Eligible for or listed in the NRHP and CRHR as per current survey
- H-01 Map Reference Number (Eligible)
Previously determined eligible for or listed in the NRHP and CRHR per 2003 HRER

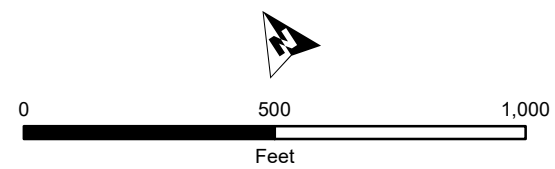
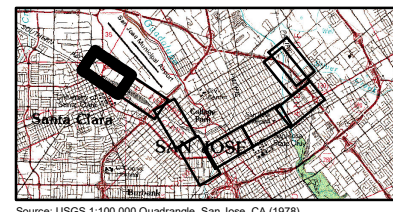
- H-01 Map Reference Number (CEQA only)
Historical Resource for the purposes of CEQA only
- H-01 Map Reference Number (Not Eligible)
Not eligible for listing in NRHP or CRHR as per current survey

Architectural APE: Sheet H

V = Vacant
 M = Modern (built after 1975)
 NE = Previously Determined Not Eligible with SHPO Concurrence (2003)



Base map: NAIP 2016
 Data: Reproduced with permission granted by County of Santa Clara
 (July, 2014) County of Santa Clara (Licensee) © 2014 County of Santa Clara, all rights reserved.



- Architectural APE
- Historic District
- Project Footprint

- I-01 Map Reference Number (Eligible)
Eligible for or listed in the NRHP and CRHR as per current survey
- I-01 Map Reference Number (Eligible)
Previously determined eligible for or listed in the NRHP and CRHR per 2003 HRER

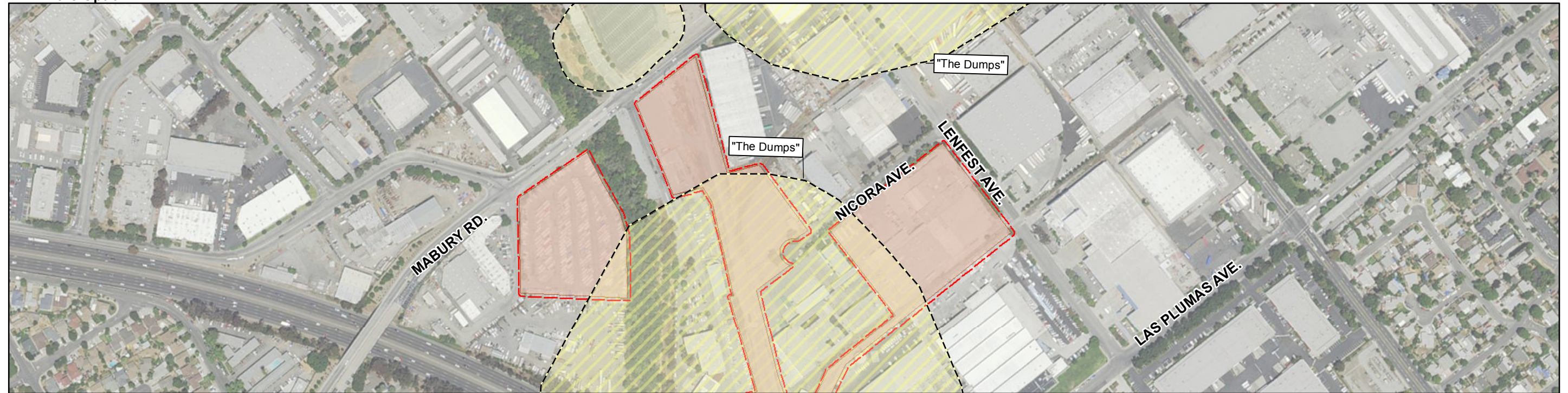
- I-01 Map Reference Number (CEQA only)
Historical Resource for the purposes of CEQA only
- I-01 Map Reference Number (Not Eligible)
Not eligible for listing in NRHP or CRHR as per current survey

Architectural APE: Sheet I

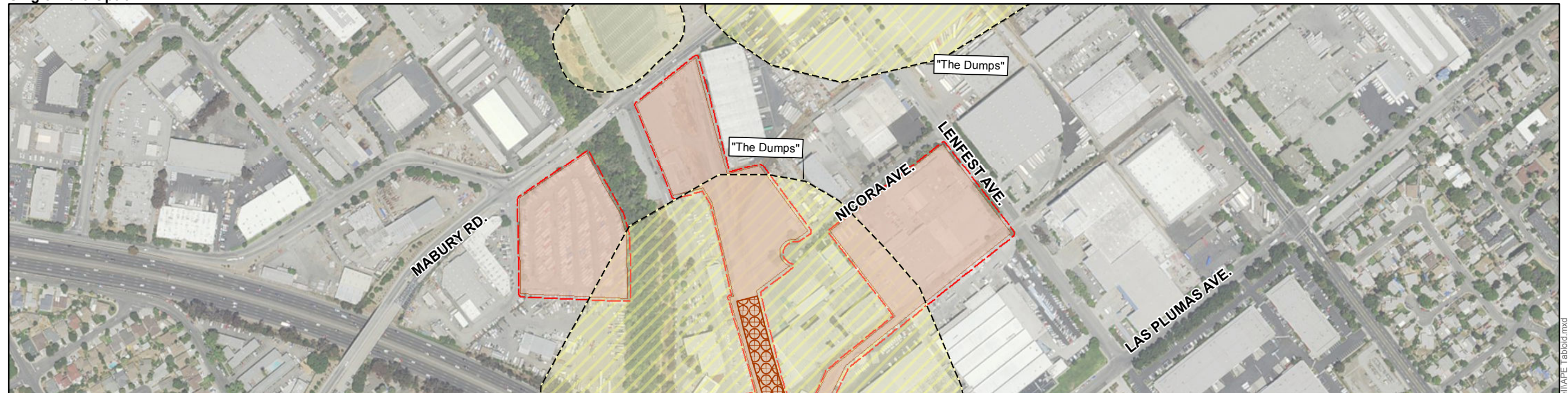
V = Vacant
 M = Modern (built after 1975)
 NE = Previously Determined Not Eligible with SHPO Concurrence (2003)






Area of Potential Effects for Archaeological Resources

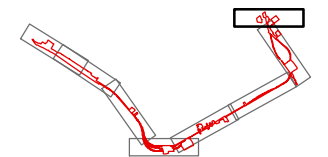
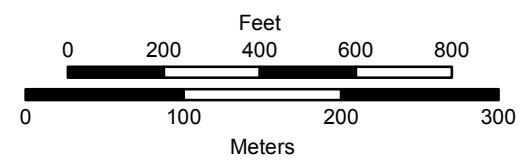
Twin-Bore Option



Single-Bore Option



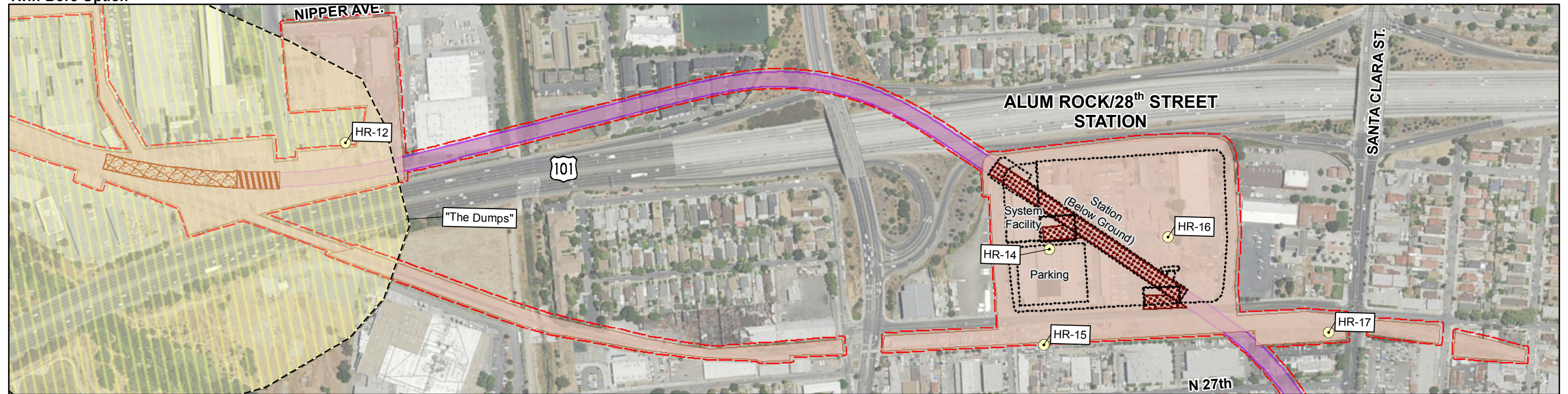
- | | |
|-----------------------------------------------------------------------------------------------------------------|---------------------------------------------------------------------------------------------------------------|
|  Area of Potential Effects * | Elements |
|  Archaeological Site |  Retained Cut |
|  "The Dumps" |  Construction Staging Area |



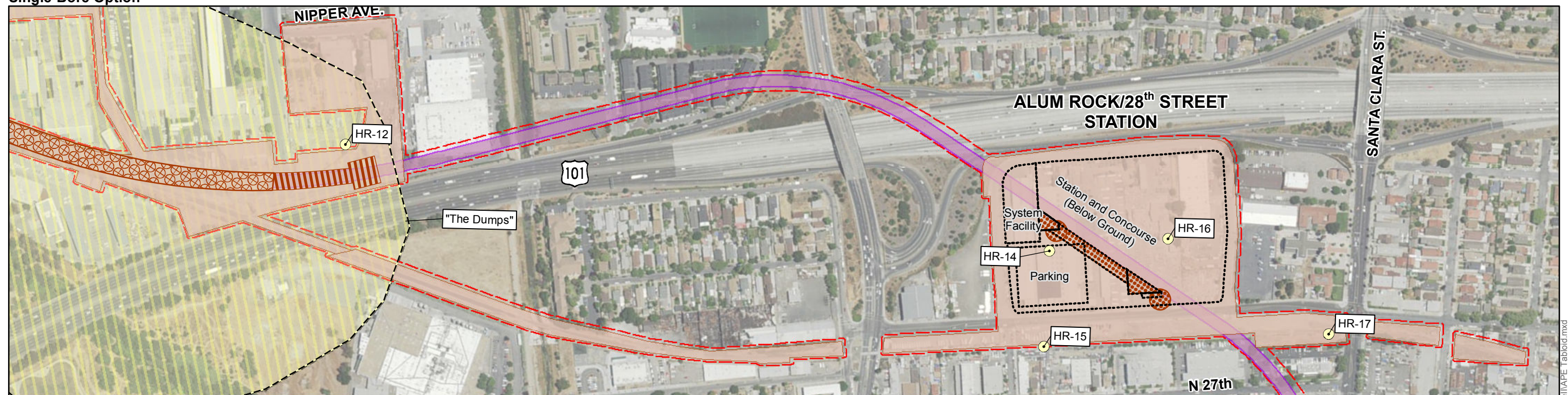
7/25/2017 H:\BartPhase1\APE Tabloid.mxd

* - Buffered by 3 meters for cartographic clarity

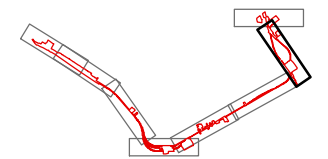
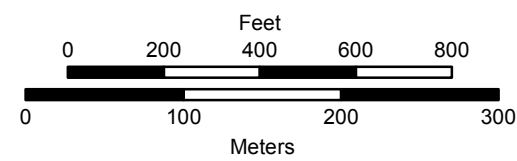
Twin-Bore Option



Single-Bore Option



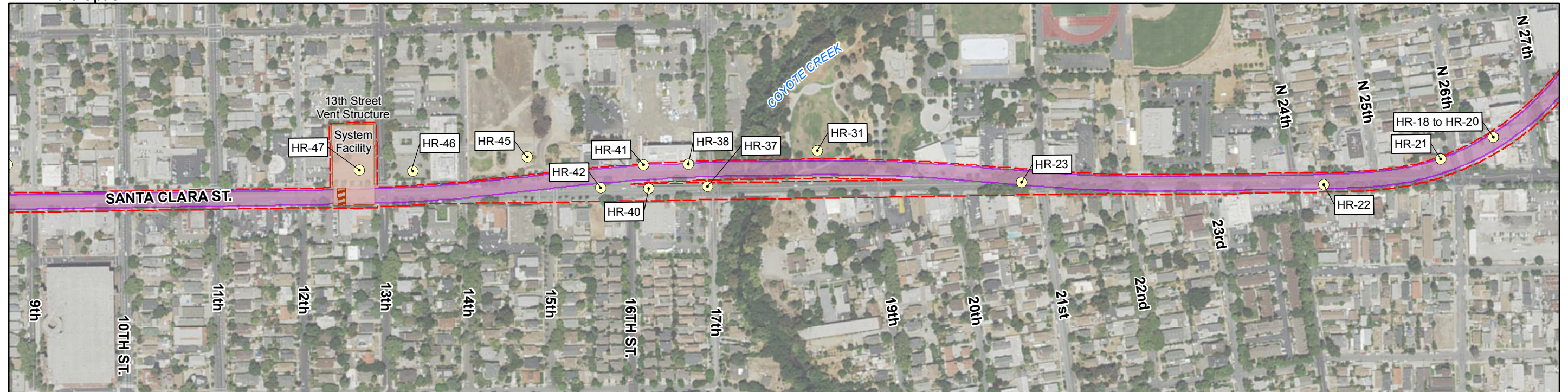
- | | |
|--------------------------------|---------------------------------------|
| Potential Archaeological Sites | Elements |
| Area of Potential Effects * | Cut and Cover |
| Archaeological Site | Station Cut and Cover |
| "The Dumps" | Retained Cut |
| | Stations, Parking, Systems Facilities |
| | Construction Staging Area |
| | Tunnel |



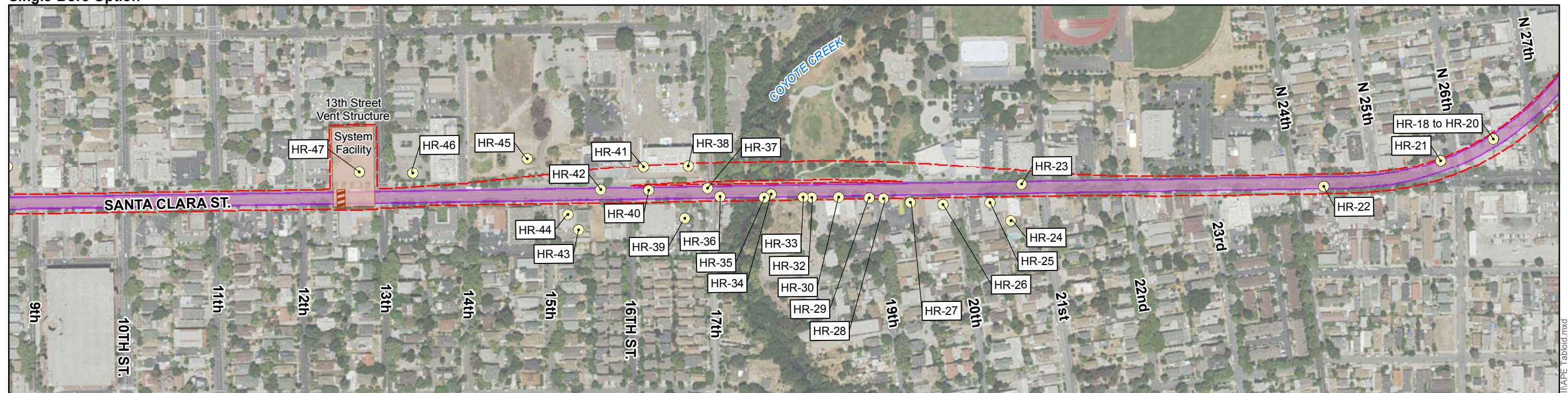
7/25/2017 H:\BartPhase1\APE Tabloid.mxd

* - Buffered by 3 meters for cartographic clarity

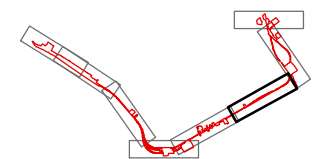
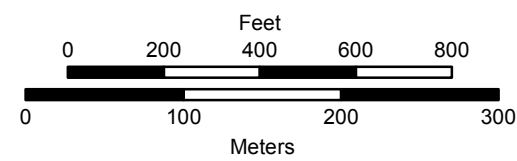
Twin-Bore Option



Single-Bore Option



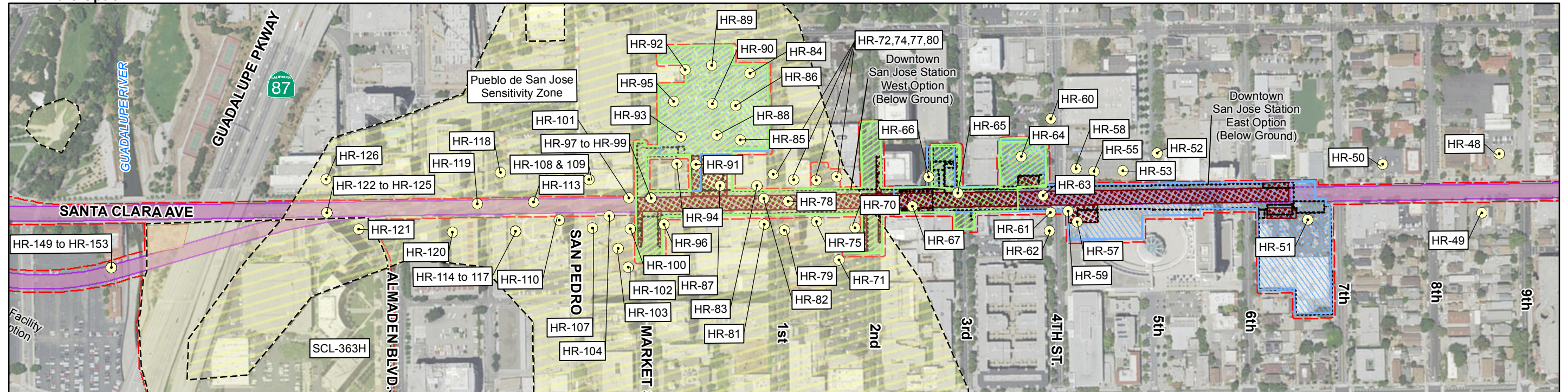
- | | |
|----------------------------------|-----------------------------|
| ● Potential Archaeological Sites | Elements |
| ▭ Area of Potential Effects * | ▨ Cut and Cover |
| | ▭ Construction Staging Area |
| | ▭ Tunnel |



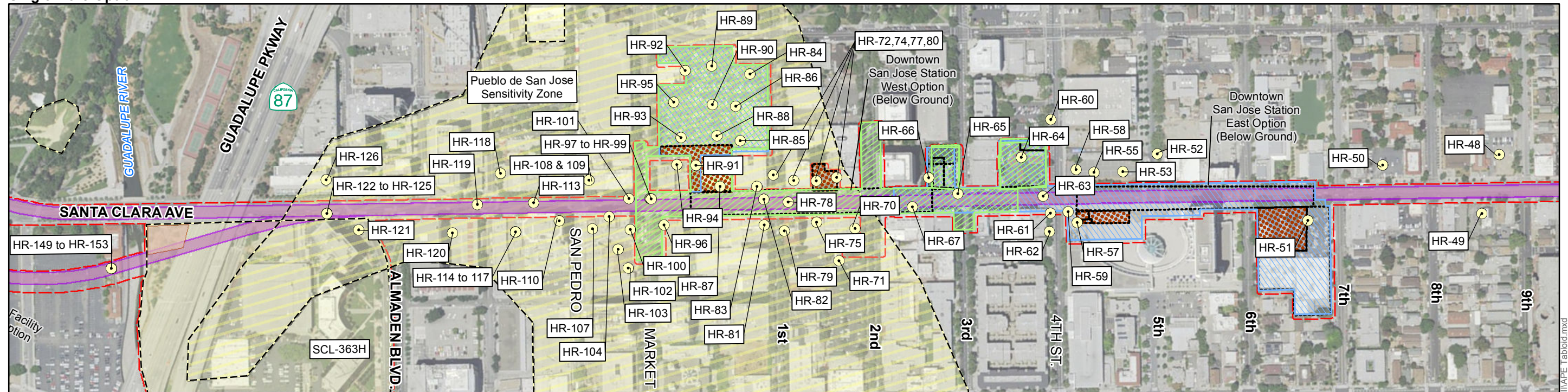
7/25/2017 11:58:17 AM H:\BartPhase\Map\Tab\Map3.mxd

* - Buffered by 3 meters for cartographic clarity

Twin-Bore Option



Single-Bore Option



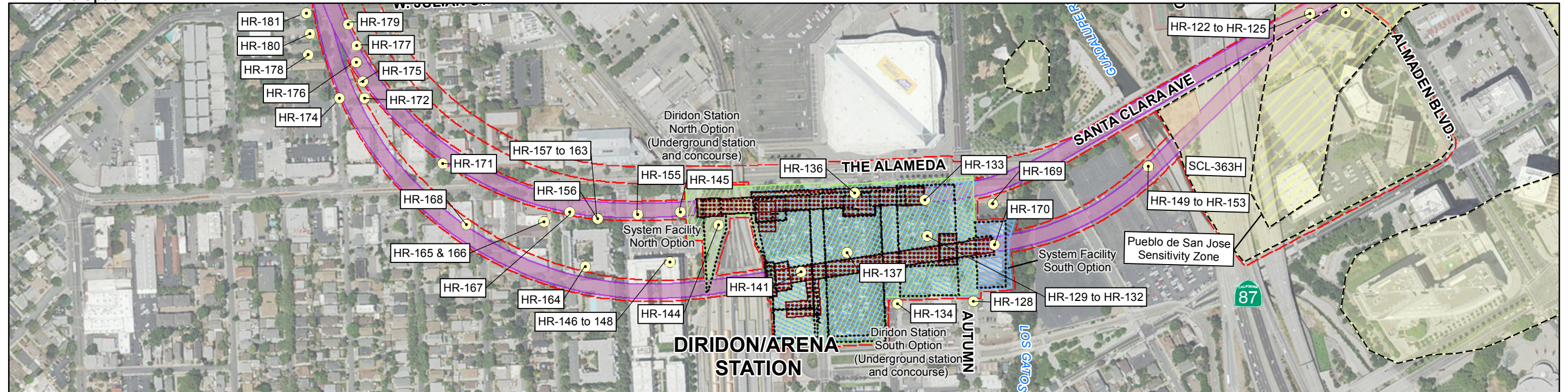
<ul style="list-style-type: none"> Potential Archaeological Sites Area of Potential Effects * Archaeological Site Pueblo de San Jose Sensitivity Zone 	<p>Elements</p> <ul style="list-style-type: none"> Station Cut and Cover Stations, Parking, Systems Facilities Construction Staging Area Tunnel 	<ul style="list-style-type: none"> Construction Staging Area (San Jose West Station) Construction Staging Area (San Jose East Station)
-----------------------------------------------------------------------------------------------------------------------------------------------------------------------------------------------------	------------------------------------------------------------------------------------------------------------------------------------------------------------------------------------------------------	------------------------------------------------------------------------------------------------------------------------------------------------------------------

0 200 400 600 800 Feet

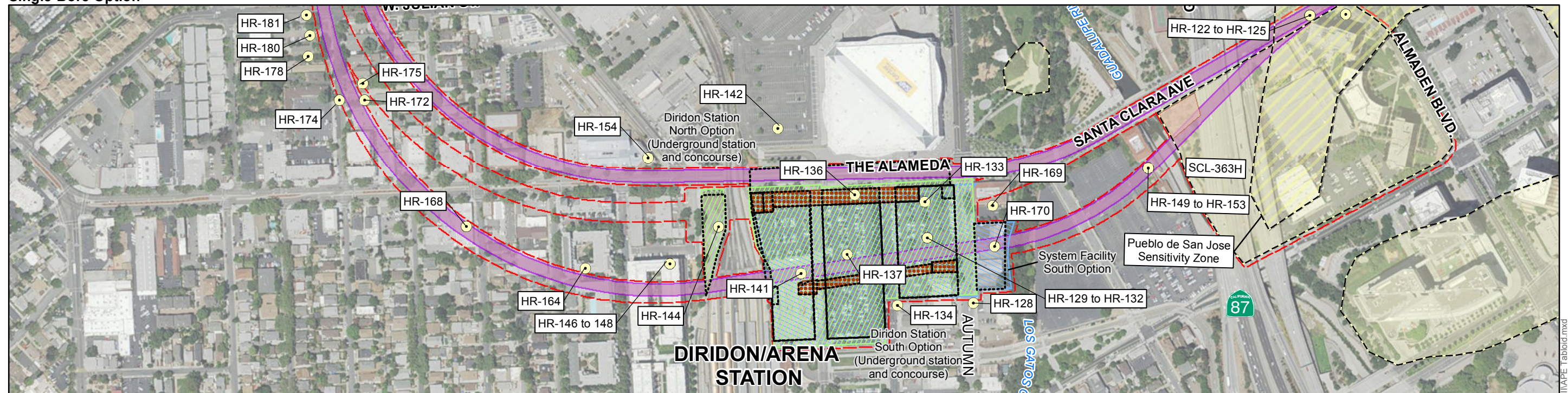
0 100 200 300 Meters

* - Buffered by 3 meters for cartographic clarity

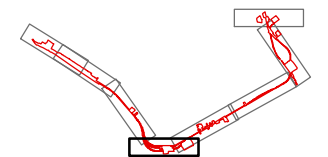
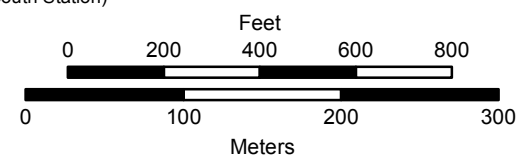
Twin-Bore Option



Single-Bore Option



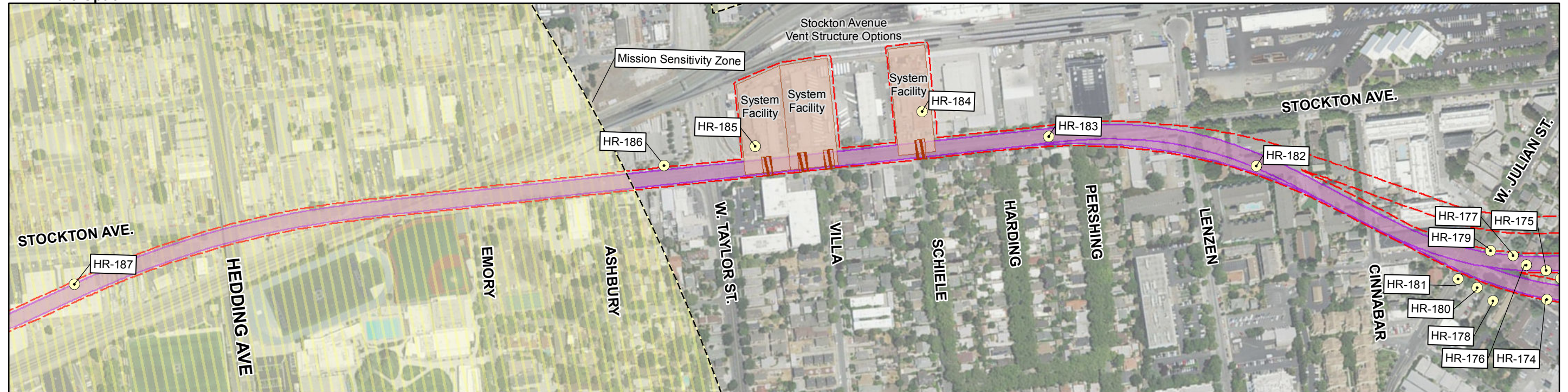
- | | | |
|---------------------------------------|-----------------------------------------|-----------------------------------------------------|
| ● Potential Archaeological Sites | Elements | ▨ Construction Staging Area (Diridon North Station) |
| ▭ Area of Potential Effects * | ▨ Station Cut and Cover | ▨ Construction Staging Area (Diridon South Station) |
| ▭ Archaeological Site | ▭ Stations, Parking, Systems Facilities | |
| ▭ Pueblo de San Jose Sensitivity Zone | ▭ Construction Staging Area | |
| | ▭ Tunnel | |



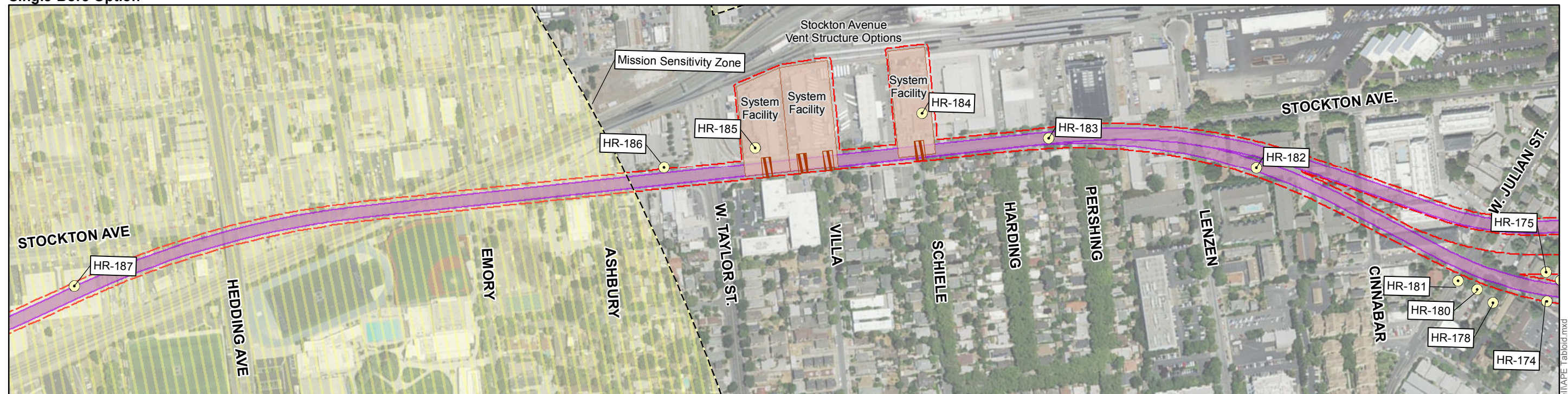
7/25/2017 H:\BartPhase\A\PE Tabloid.mxd

* - Buffered by 3 meters for cartographic clarity

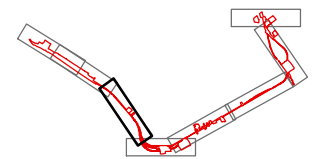
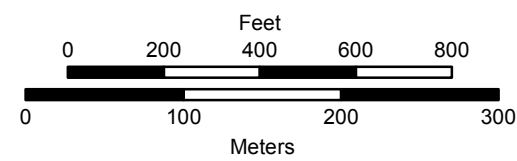
Twin-Bore Option



Single-Bore Option



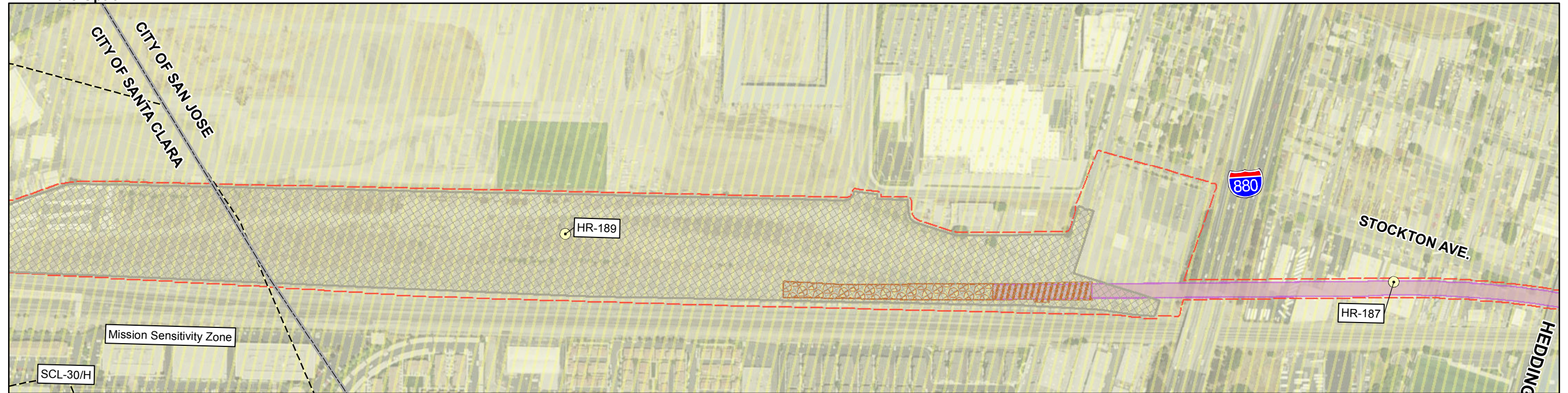
- | | |
|--------------------------------|---------------------------|
| Potential Archaeological Sites | Elements |
| Area of Potential Effects * | Construction Staging Area |
| Archaeological Site | Tunnel |
| Mission Sensitivity Zone | |
| Cut and Cover | |



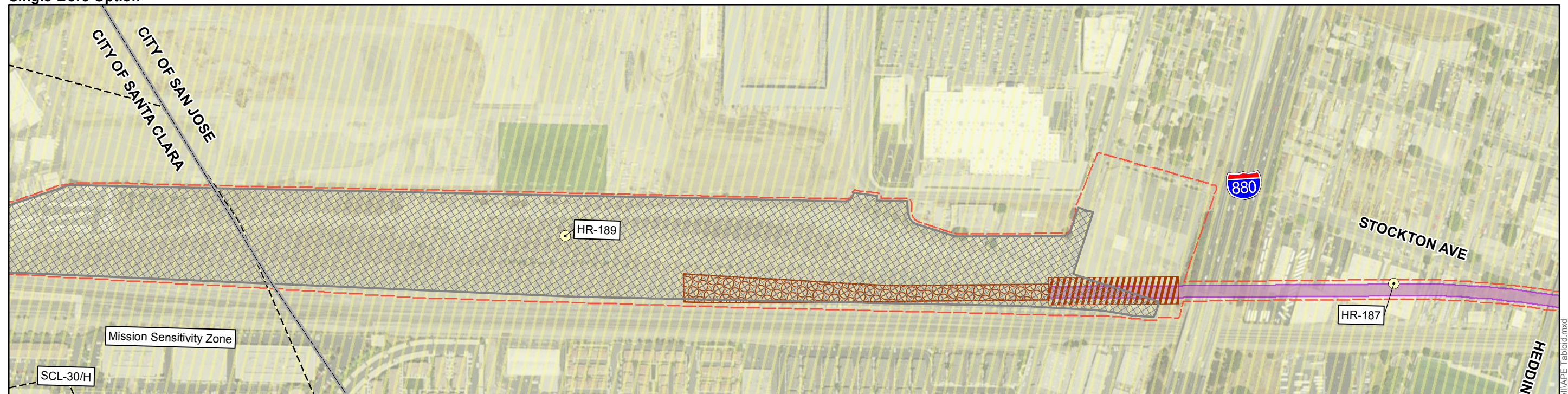
7/25/2017 H:\BartPhase\MapE_Tab\cid.mxd

* - Buffered by 3 meters for cartographic clarity

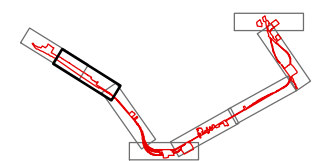
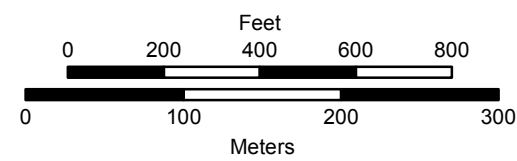
Twin-Bore Option



Single-Bore Option



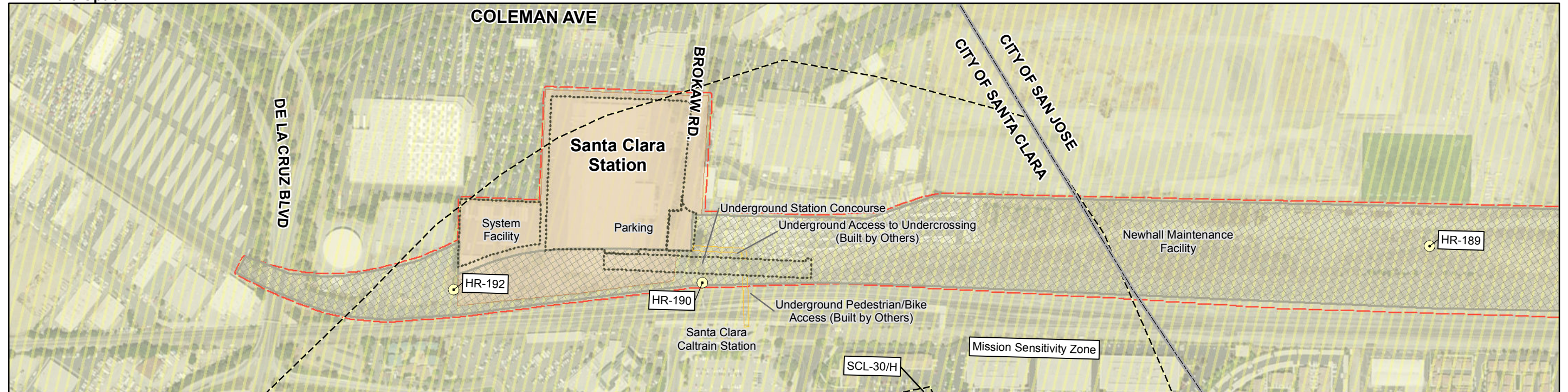
- | | |
|----------------------------------|--------------------------------|
| ● Potential Archaeological Sites | Elements |
| □ Area of Potential Effects * | ▨ Cut and Cover |
| ▨ Archaeological Site | ⊗ Retained Cut |
| ▨ Mission Sensitivity Zone | ▧ Newhall Maintenance Facility |
| | ■ Tunnel |



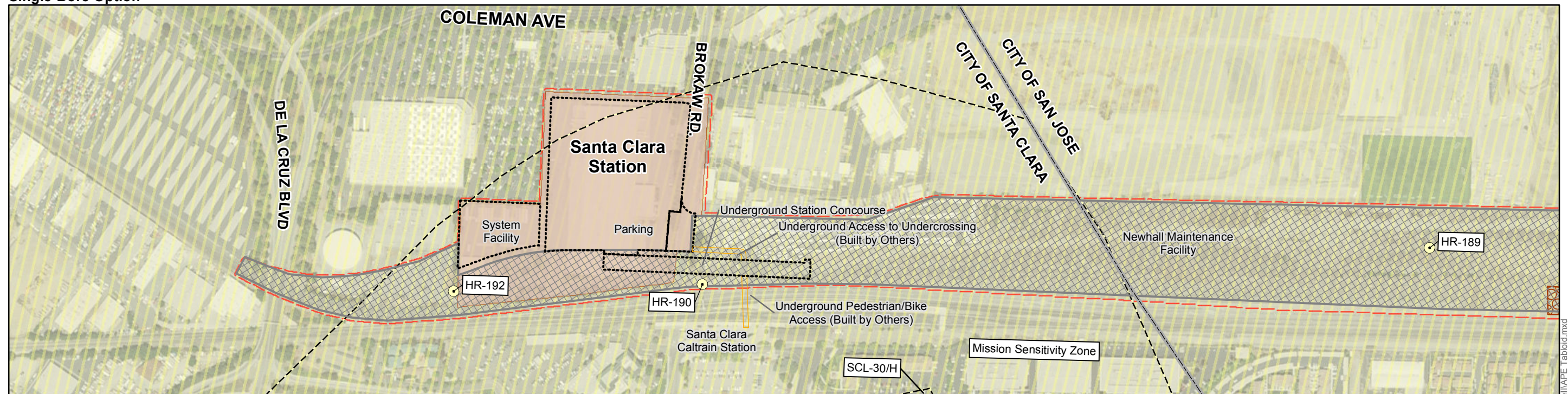
7/25/2017 H:\BartPhase\IAPE Tabloid.mxd

* - Buffered by 3 meters for cartographic clarity

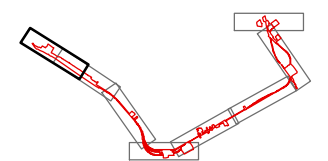
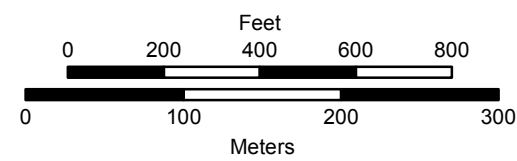
Twin-Bore Option



Single-Bore Option



- | | |
|----------------------------------|-----------------------------------------|
| ● Potential Archaeological Sites | Elements |
| ▭ Area of Potential Effects * | ▭ Retained Cut |
| ▭ Archaeological Site | ▭ Stations, Parking, Systems Facilities |
| ▭ Mission Sensitivity Zone | ▭ Underground Access (Built by Others) |
| | ▭ Newhall Maintenance Facility |
| | ▭ Construction Staging Area |



7/25/2017 H:\BartPhase1\APE Tabloid.mxd

* - Buffered by 3 meters for cartographic clarity

Draft Programmatic Agreement

A Draft Programmatic Agreement was included in the Draft SEIS/SEIR released in January 2017 and can be viewed on the project website at <http://www.vta.org/bart/draft2016seis-seir/volumeII> as Appendix D3. The Programmatic Agreement is currently under consultation with the Office of Historic Preservation and other Consulting Parties. The Final Programmatic Agreement will be included as an attachment to the Record of Decision.

