

# Ask VTA: VTA's BART Silicon Valley

April 29, 2024

# Today's Agenda

- Welcome
- Meet VTA Staff
- Getting to Know You and How You Get Around
- VTA's Role in Santa Clara County
- BART Silicon Valley (BSV) Program
- **Ask VTA: Questions and Discussion**
- Thank You



## Participating Staff

- Nile Ledbetter – BSV Santa Clara Station Stakeholder Lead
- Erin Sheelen – BSV Diridon Station Stakeholder Lead
- Adriano Rothschild - BSV Downtown San José Station Stakeholder Lead
- Monica Tanner – BSV 28th Street/Little Portugal Station Stakeholder Lead
- Brent Pearse – BSV Planning and Engagement Manager
- Deanna Bolio & Gretchen Baisa – Community Outreach and Public Engagement

## Quick Poll:

How do you get around Santa Clara County?

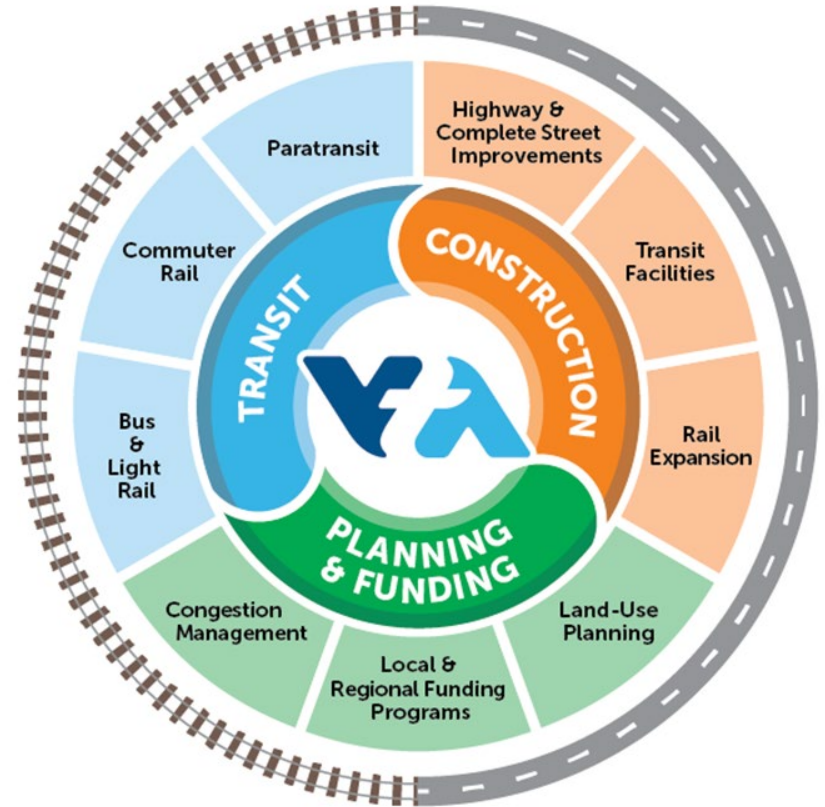




# VTA's Role in Santa Clara County

VTA is more than buses and light rail. As the County Transportation Agency, we also:

- Act as a funding conduit for local cities and other agencies
- Design and build transit facilities, highway improvements, and expand rail service
- Plan for congestion management and land-use
- Design, build and own BART to Silicon Valley infrastructure in Santa Clara County



# VTA's BART Silicon Valley Phase II Extension Project

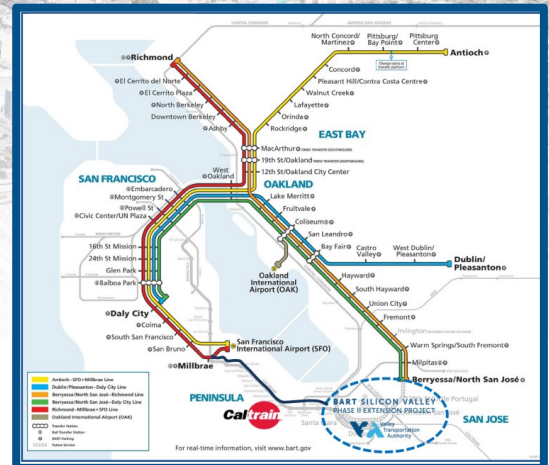


# VTA's BART Silicon Valley Phase II Extension



- 6-Mile Extension of BART Service
- 5-mile single-bore tunnel, 1-mile at-grade
- Storage Yard & Maintenance Facility

- 4 New BART Stations
- 3 street-level entry/underground platforms
- 1 at-grade level



Current as April 2024 – For Discussion Only



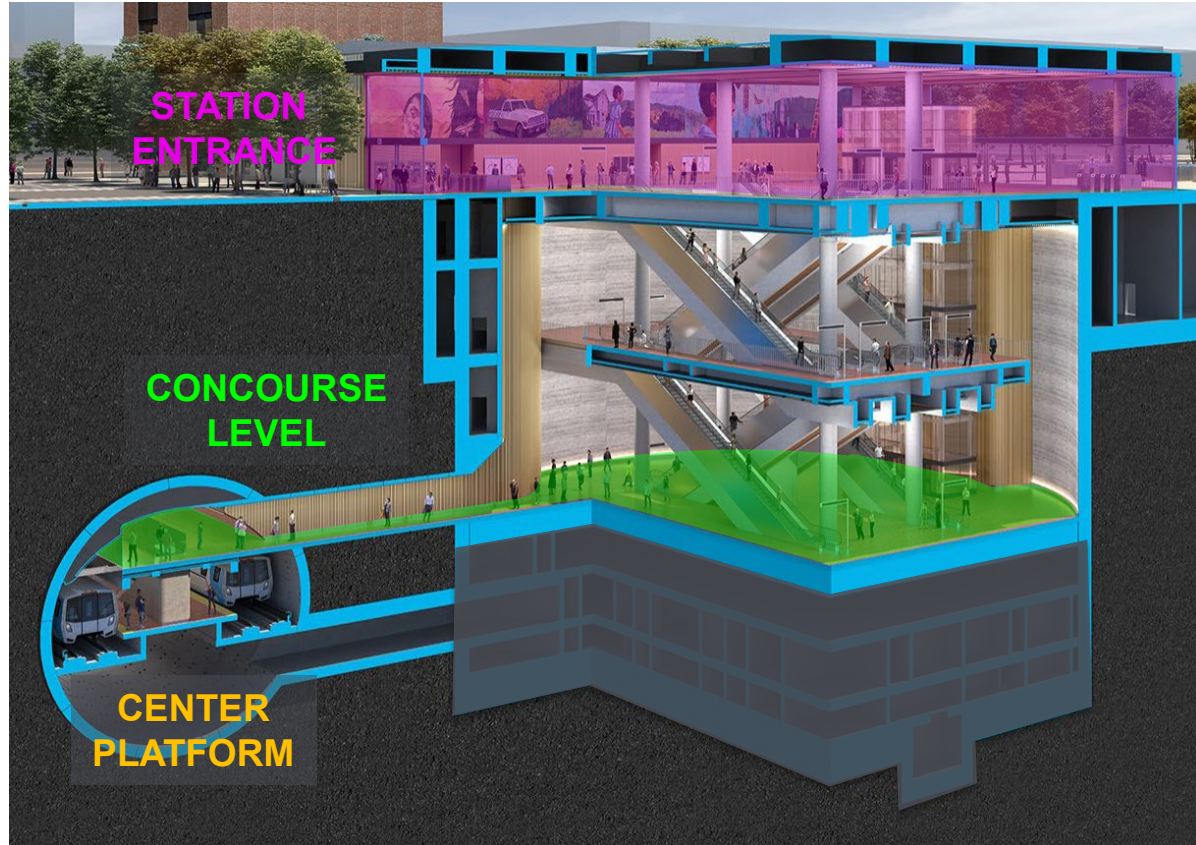


# Stations Overview

# Underground Stations: Typical Layout



- Street-level **station entrance** with faregates, station agent, add-fare machines, etc.
- **Concourse level** below ground spans from station building to underground tunnel
- **Center platform** within the tunnel provides access to trains in both directions

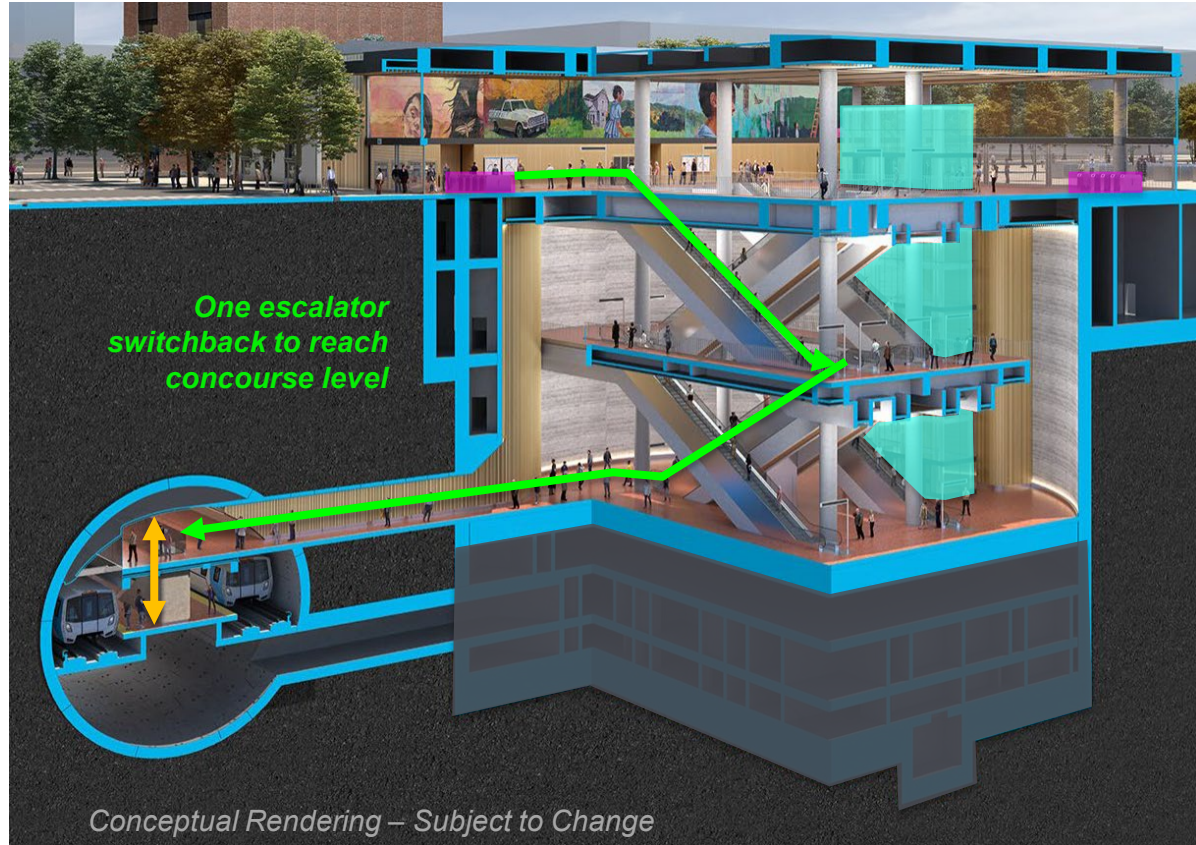


# Underground Stations: Typical Circulation



- Faregates at street-level building entrances
- Escalators and stairs to access concourse level.
- High-speed elevators to access concourse level\*
- Stairs and elevators\* for access between concourse level and platform

*\*At 28th Street/Little Portugal Station, high-speed elevators will provide direct connection from street-level to platform.*





# 28th Street/Little Portugal BART Station



6,700  
Riders  
by 2040



1,200  
Onsite  
Parking



Bicycle  
Parking



Close to  
Future  
Rapid Bus  
Service



Potential  
Transit-  
Oriented  
Development



Connected  
to Future  
Five Wounds  
Trail



Station  
Plaza



# Downtown San José BART Station



27,900  
Riders  
by 2040



Two  
Entrances  
on Santa  
Clara Street



Bicycle  
Parking



Ticketing  
Gates at  
Street Level



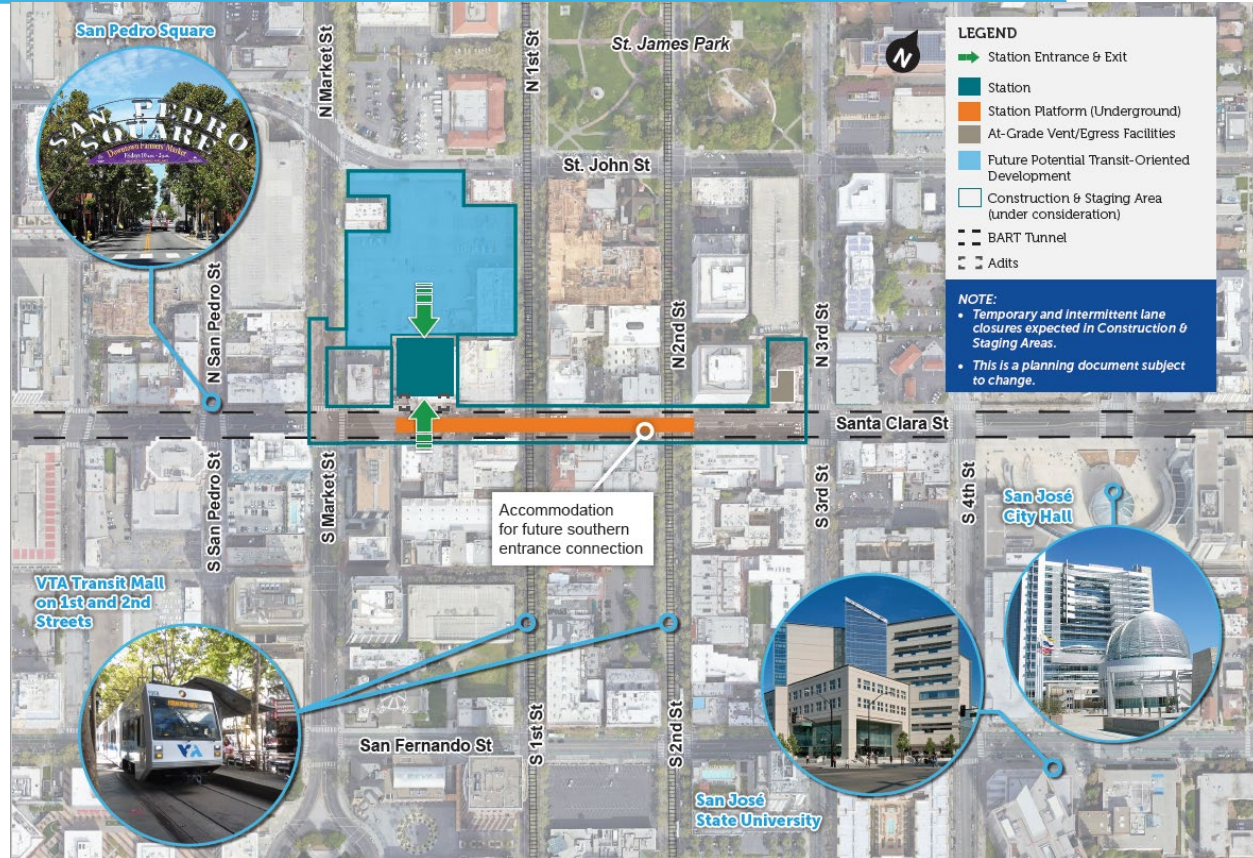
Surrounded  
by on-site  
Transit-  
Oriented  
Development



Connects to  
VTA Bus/  
Light Rail



Walking  
Distance to  
Numerous  
Landmarks &  
Amenities





# Diridon BART Station



9,900 Riders  
by 2040



Bicycle  
Parking



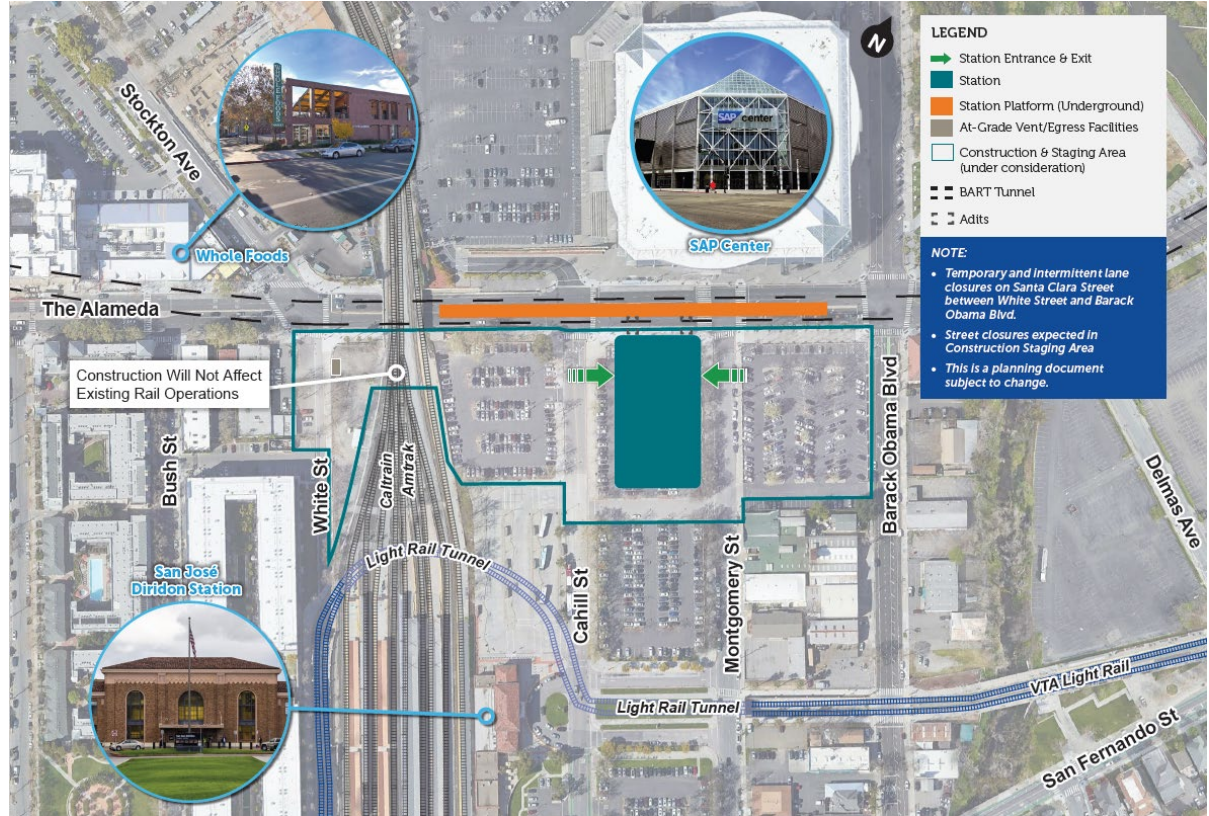
Entrances on  
Cahill and  
Montgomery  
Streets



Ground Level  
Connection to  
Diridon Caltrain  
Station and  
Transit Center



Across from SAP Center,  
Downtown West,  
and Future Diridon  
Intermodal Station



# Santa Clara BART Station



9,900 Riders  
by 2040



Bicycle  
Parking



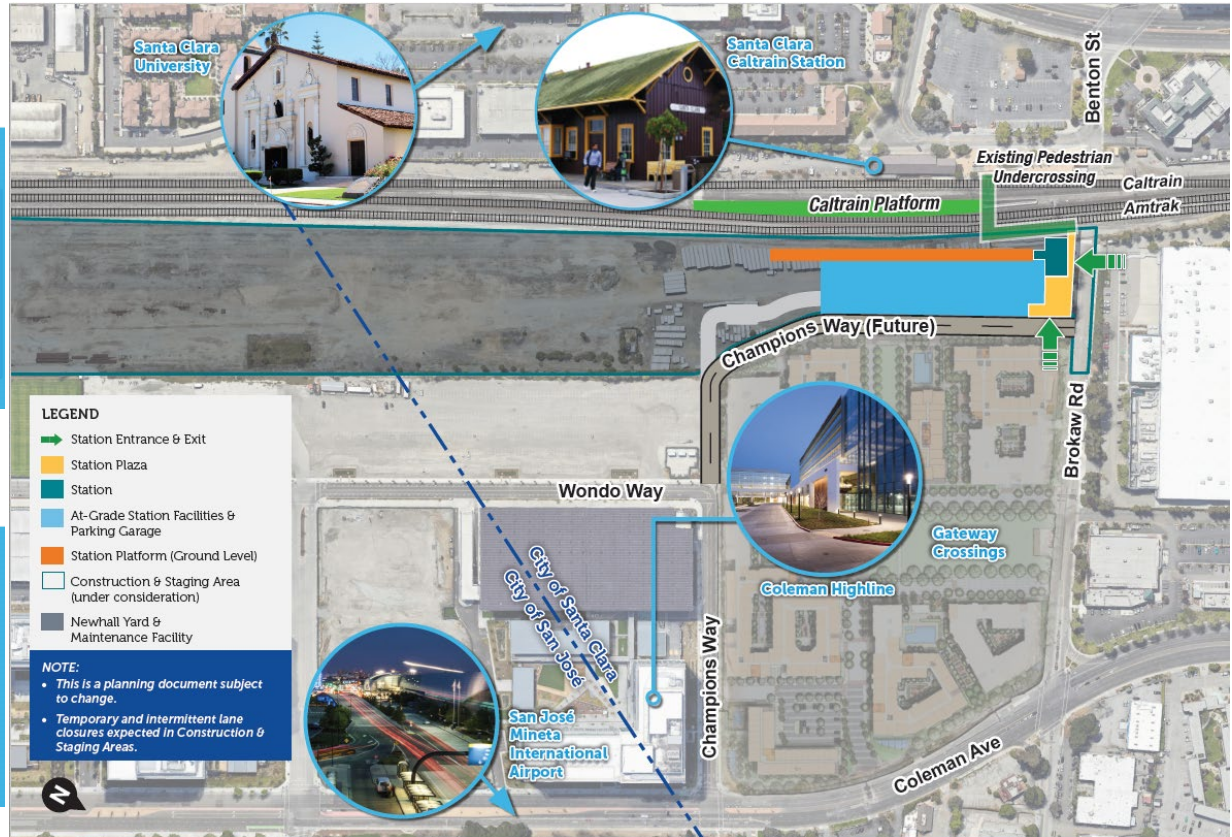
Entrances on  
Cahill and  
Montgomery  
Streets



Ground Level  
Connection to  
Diridon Caltrain  
Station and  
Transit Center



Across from SAP Center,  
Downtown West,  
and Future Diridon  
Intermodal Station





# Design Iterations



# VTA's BART Silicon Valley Tunnel History



10% Design  
2019



Engineering & Procurement

Expedited Program  
Delivery Application  
2021



CP2 Contractor Proposed  
Tunnel Innovation  
2022



2019

2020

2021

2022

2023

2024

**Peer Agency Review  
Workshop (2020)**

Received feedback on scope, delivery methods, and overall approach based on lessons learned

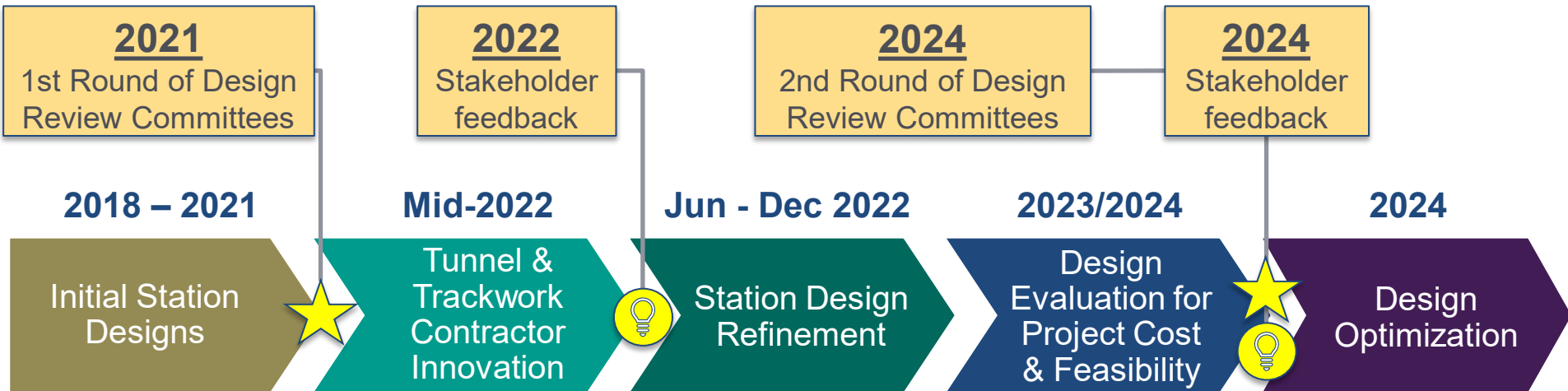
**Peer Exchange/Review (2022)**

Confirmed single bore tunnel design as right approach for VTA's BSVII extension

**Purchased  
Tunnel Boring  
Machine (2023)**

**Reaffirm Tunnel  
Methodology (2024)**

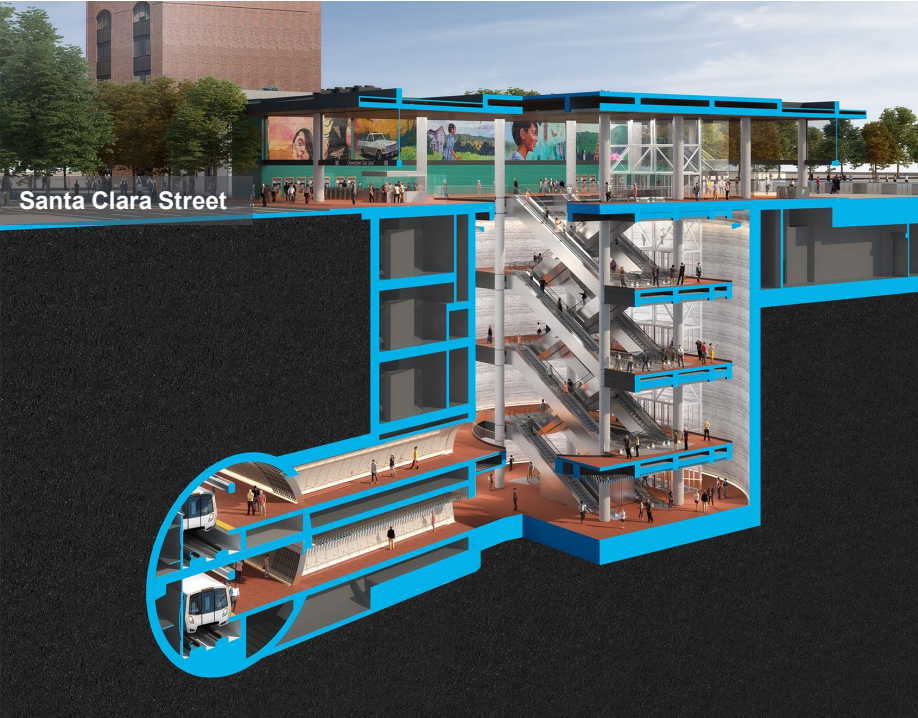
# Station Design Process



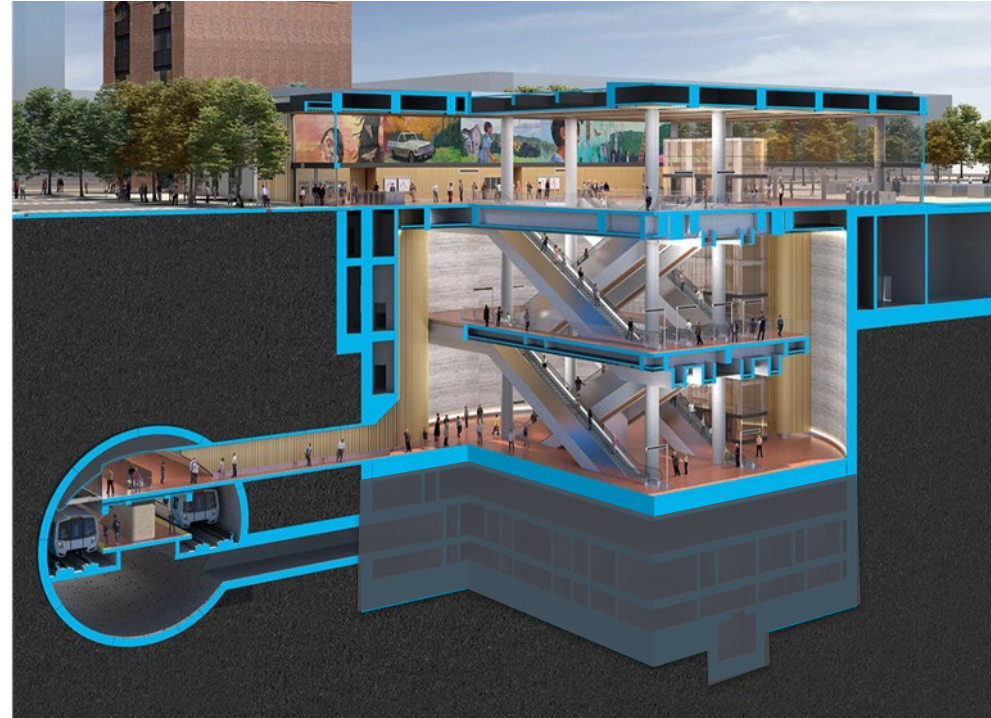
# Example of Station Design Refinement



## Baseline Design



## Refined Concept



*conceptual diagrams*



## 28<sup>th</sup> Street/Little Portugal Station

- VTA is working with the community to deliver the long-term vision for a vibrant and activated 28th Street/Little Portugal Station and station area.

## Downtown San José Station

- DTSJ Station has been designed to facilitate a future entrance on the south side of Santa Clara Street.
- VTA and City will continue to partner on timing and funding to deliver the future entrance.

## Diridon Station

- VTA is refining the Diridon BART Station facilities.
- A Task Force has been formed to focus on connecting the station to the future Diridon Intermodal Facility.

## Santa Clara Station

- VTA refined station configuration based on input from community and stakeholders.
- All station facilities at ground level.



# Santa Clara Station Configuration Changes



# Station Configuration and Access



- Station configuration updated to be ground level and enter from Brokaw Road or Champions Way
- A new extension of Champions Way to provide secondary link to Coleman Avenue
- Both Brokaw Road and Coleman Avenue will have bike lanes
- Existing pedestrian undercrossing from SC Transit Center and Caltrain platforms will remain

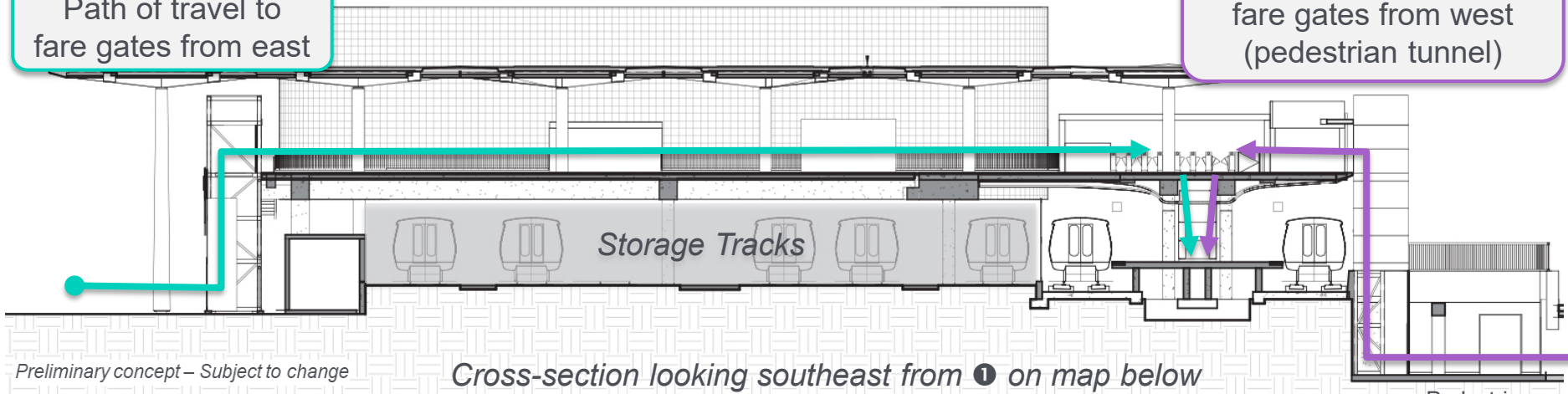


# Previous Station Cross-Section



Path of travel to fare gates from east

Path of travel to fare gates from west (pedestrian tunnel)

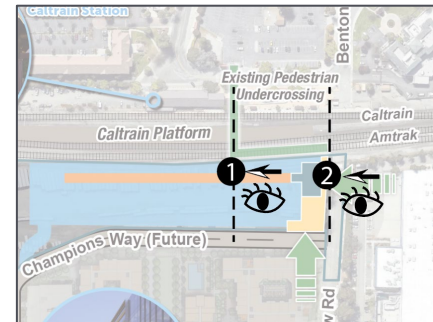


Preliminary concept – Subject to change

Cross-section looking southeast from ❶ on map below

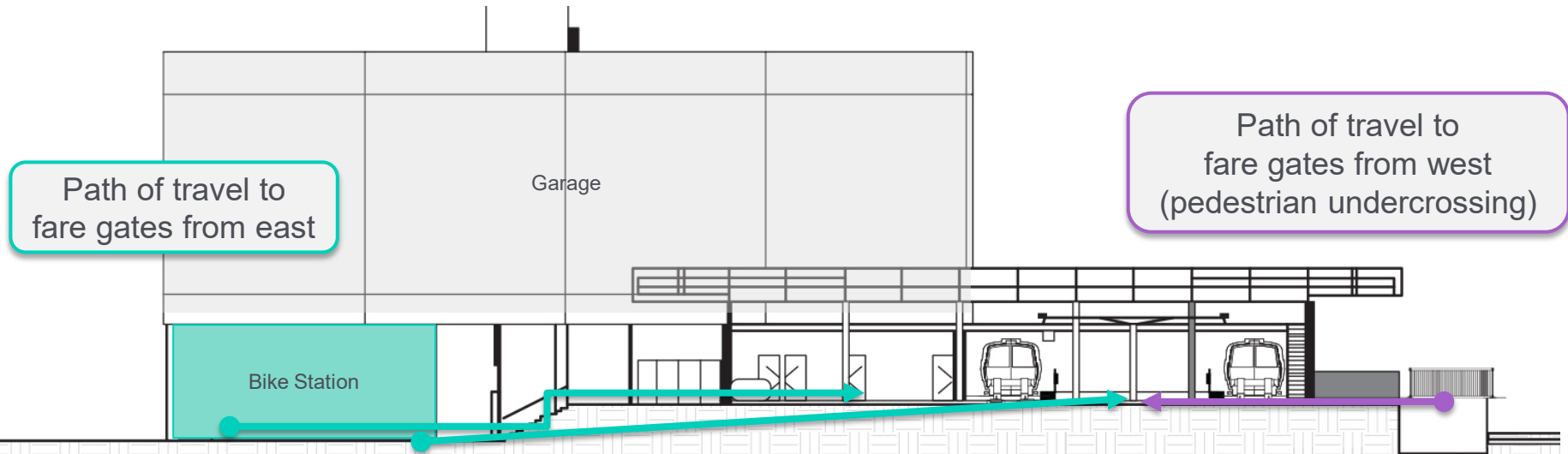
	Champions Way	Ped Tunnel Exit	Concourse
--	---------------	-----------------	-----------

Elevators	2	2	2
Escalators	2	2	2
Stairs	1	1	2



Pedestrian undercrossing

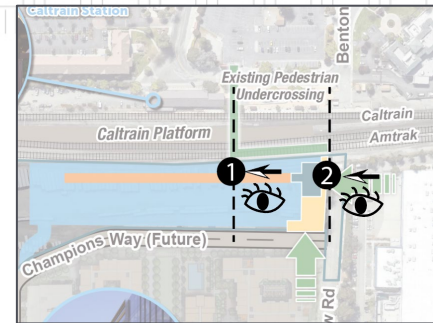
# Current Station Cross-Section



Cross-section looking southeast from ② on map below

	Champions Way	Ped Tunnel Exit
Elevators	2 (for garage)	0
Escalators	0	0
Stairs	1 (with ADA ramp)	0 (ramp)

	Champions Way	Ped Tunnel Exit
Elevators	2 (for garage)	0
Escalators	0	0
Stairs	1 (with ADA ramp)	0 (ramp)





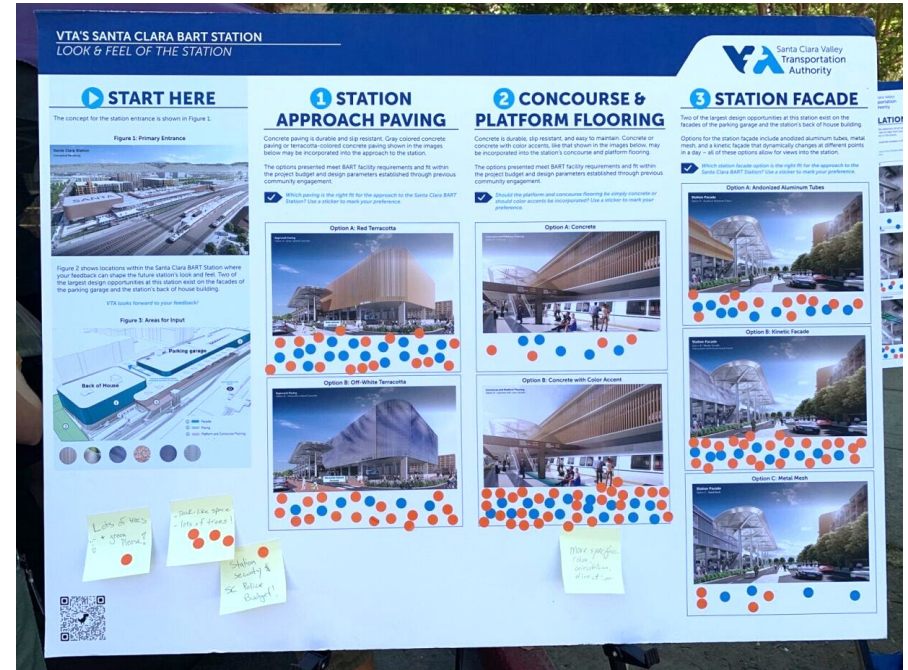
- Design Review Committees (DRC) are a required forum for community leaders and local government partners to **provide input** to VTA's BSVII project team for **select visual elements** of the stations.
- Elements must fit within project parameters (ex. project budget, BART facility standards, and operations and maintenance requirements).
- Santa Clara Station DRC is **currently ongoing** to provide members opportunity for input prior to the 60% design review, stemming from changes to the station configuration.

## 2021

- Focus was to discuss the look and feel of the station elements.
- In person and virtual engagement effort to gather public feedback.

## 2023/2024

- Further discussion of aesthetic elements following station configuration changes.
- Two design alternatives currently being evaluated to provide guidance for future public engagement.
- Public engagement of planned for Summer 2024.





# DRC Santa Clara Station Alternatives



Open Plaza and Bow Truss Canopy



Orchard Pavilion and Extended Canopy





# Adjacent Project Coordination

# Potential Development Opportunities



## SANTA CLARA STATION

New Development:  
12.7 Million sq. ft.

## DIRIDON STATION

New Development:  
15 Million sq. ft.

## DOWNTOWN SAN JOSÉ STATION

New Development:  
23.8 Million sq. ft.

## 28TH ST / LITTLE PORTUGAL STATION

New Development:  
8.5 Million sq. ft.

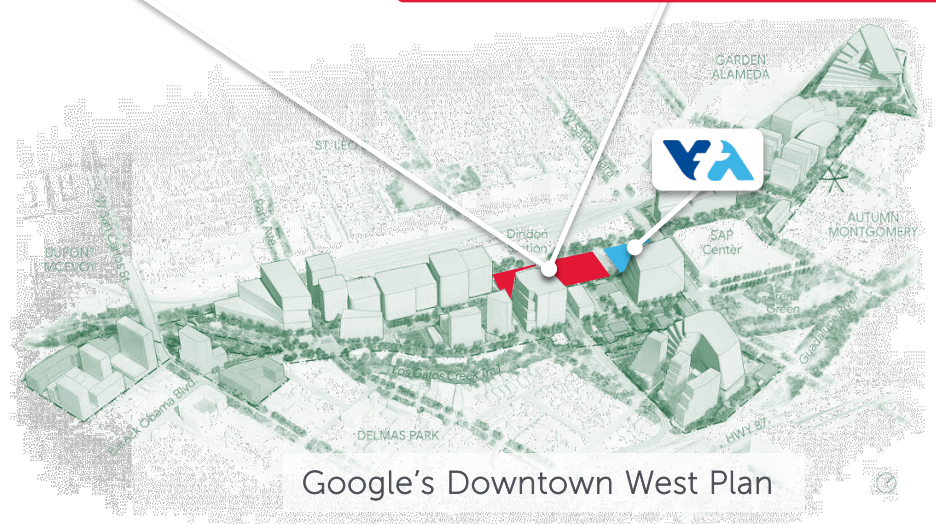


# Development in Diridon Area





# Adjacent Developments



Google's Downtown West Plan

# Future Diridon Intermodal Station

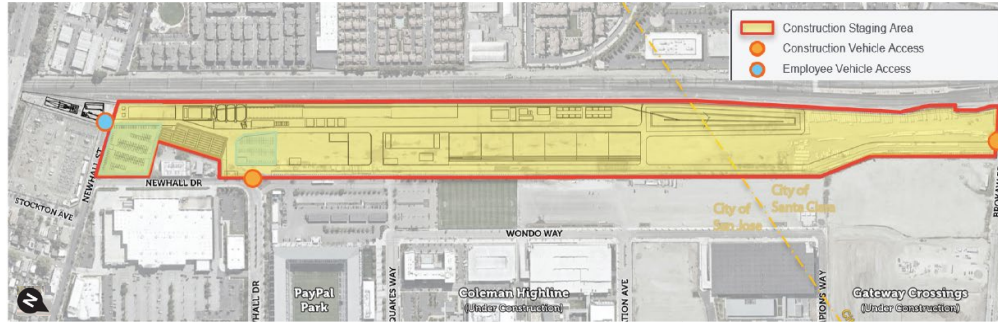




# Stay Informed on the Project



# Construction is Starting



## BART SILICON VALLEY PHASE II EXTENSION PROJECT

**Construction is starting for the West Portal  
at VTA's Newhall Yard & Maintenance Facility!**

Learn more about the project and sign up for updates at [VTABART.org](http://VTABART.org)

**VTA** Valley Transportation Authority  
Solutions that move you

# How do I learn more about the project?



## Interactive Efforts



Tabling events throughout the year around the station areas



Community Working Group meetings



Public Meetings



Community Group Meeting Outreach

- Reach out to have us present updates at your local Community Group/Neighborhood Association/etc. [www.vta.org/about/subscribe](http://www.vta.org/about/subscribe)

## Resources



VTA's hotline number: **408-321-2345**

- Call to learn more about specific project efforts and provide your feedback



VTA's website: **[vtabart.org](http://vtabart.org)**

Sign up to get alerted on nearby construction and find Informational Factsheets, Newsletters, and Blog Posts



Email questions to: **[vtabart@vtabsv.com](mailto:vtabart@vtabsv.com)**

Social Media



Twitter: **[@vtabsv2](https://twitter.com/vtabsv2)**

Facebook: **[@vtabsv](https://facebook.com/vtabsv)**

Instagram: **[@vtabsv2](https://instagram.com/vtabsv2)**

# New Project Website



English

Search...

- The Project
- Project Benefits
- Construction
- Business Resource Program
- In The Community
- Transparency & Accountability
- Resource Library
- Contact

## OUR MISSION

to move transit users smoothly through the Bay area

### News Updates



VTA Board of Directors Approves the BART Phase II Project Business Resource Program (BRP)



VTA launches official BSVII Tunnel Boring Machine (TBM) Naming Contest

VTABART.ORG

# Today's Format

**Ask VTA** has been developed as a chance for the public to have a deeper discussion about the projects and programs that VTA delivers for the residents of Santa Clara County.

## Today's Topic: VTA's BART Silicon Valley Phase II Extension

This Ask VTA will focus on questions about the station facilities and coordination with other developments and planning projects. A future Ask VTA will cover BSVII construction activities.

### We're here to answer questions about:

- The individual station facilities
- Coordination with adjacent planning projects
- How to access the stations
- How to provide input on station design





# Participate in VTA Community Outreach Events

## **Eastridge to BART Regional Connector**

- Community Meetings planned for:
  - 5/8 - Online
  - 5/9 – Online (facilitated in Spanish)
  - 5/11 – In-person Community Meeting
  - 5/23 – Stakeholder Working Group Meeting

**Groundbreaking and Community Celebration:** June 8

## **Transit Oriented Communities Program**

- Pre-application Workshops:
  - 4/30 – Gilroy Transit Center
  - 5/1 - Online

## **Equitable Vehicle Miles Traveled Project**

- Community Meetings planned for:
  - 5/16 – Virtual Community Based Organization Workshop
  - 5/21 – East San Jose Community Workshop
  - 5/23 – South County Community Workshop
  - 5/30 - Virtual Community Workshop

## **Keep Santa Clara Valley Beautiful**

- Litter Cleanup: 5/18 – 880/BayShore

**5/20: Ask VTA: Bike to...Everywhere!**

[www.vta.org/cope](http://www.vta.org/cope)

# Thank You!

*To learn more about VTA's BART Silicon Valley, visit*  
<https://www.vta.org/projects/bart-sv/phase-ii>

For questions, comments or topic suggestions for Ask VTA, email  
[community.outreach@vta.org](mailto:community.outreach@vta.org)