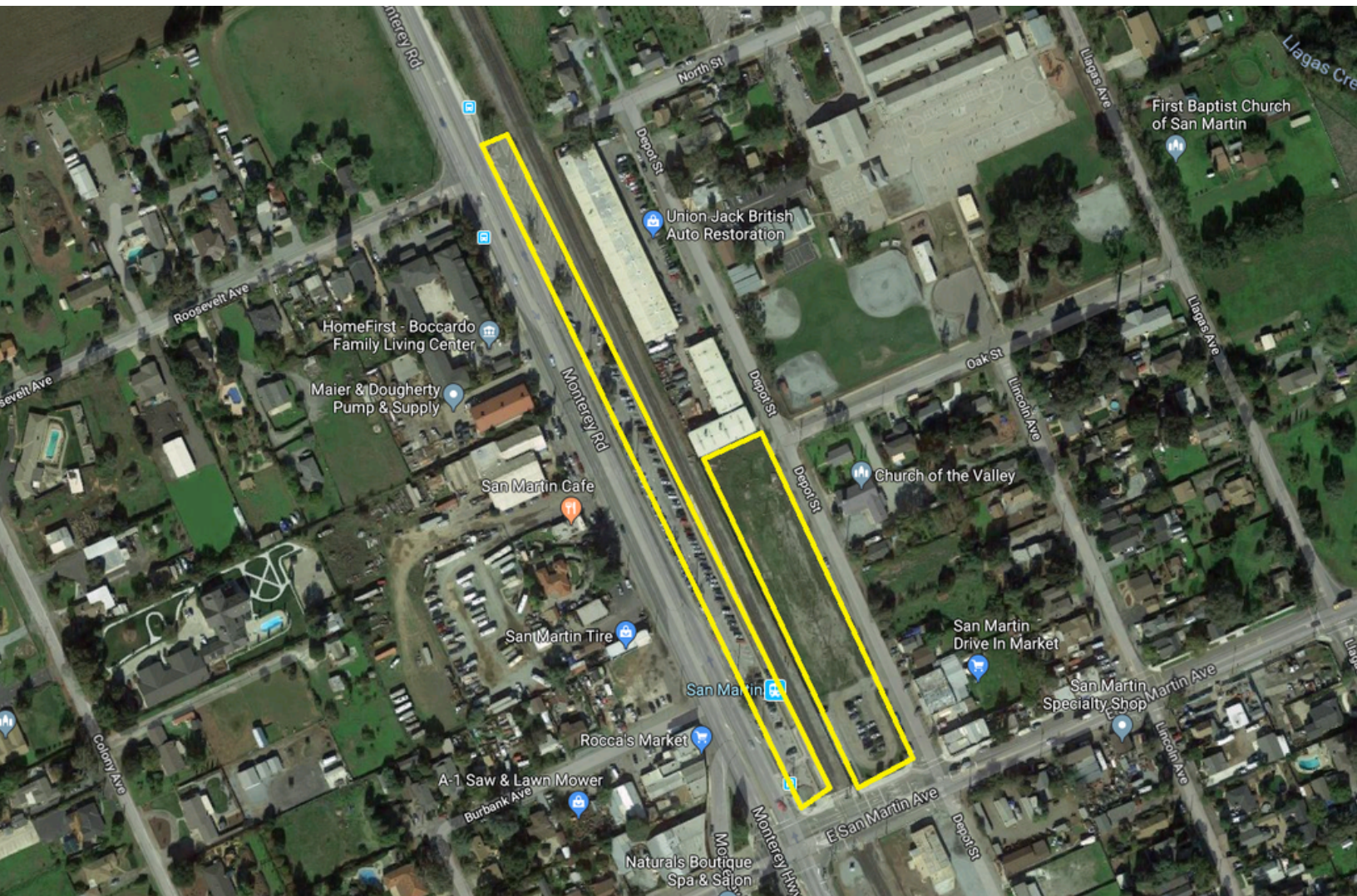


19

SAN MARTIN CALTRAIN STATION

San Martin Ave @ Monterey Hwy, San Martin, CA 95046



SITE DETAILS

APN: 825-02-126, 140

Acreage: 3.3

Title: VTA, Partial City of San Martin

Transit: Caltrain, Bus

Current Use: Park & Ride Lot

Zoning: A1 with Combining
District: General Residential & Agricultural

General Plan: Rural Residential Area

School District: Morgan Hill Unified