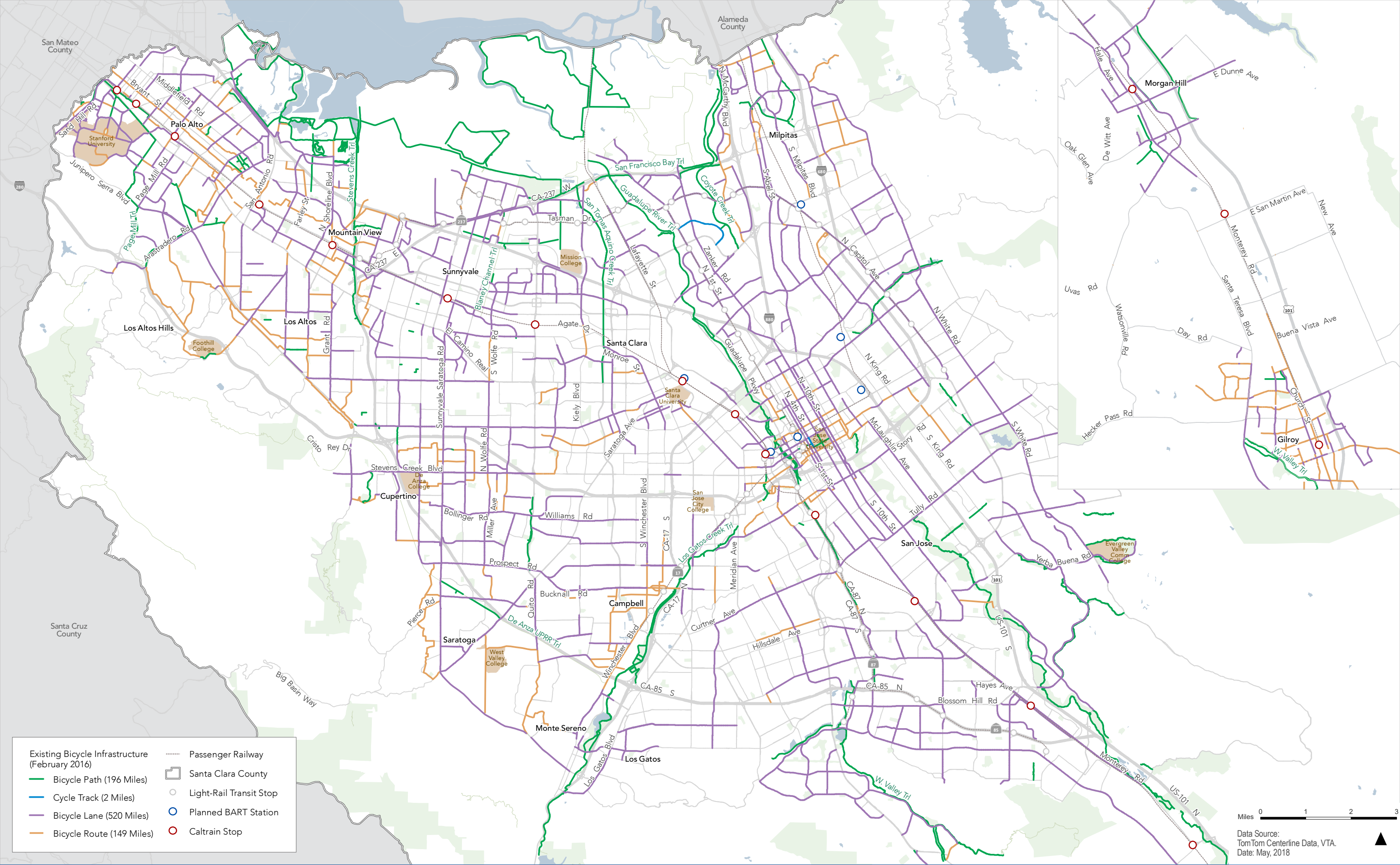


Evening Commute Peak Hour Bicycle Counts in 2016

Miles 0 1 2 3

Data Source: CMP counts, year 2016
TomTom Centerline Data, VTA.
Date: May, 2018

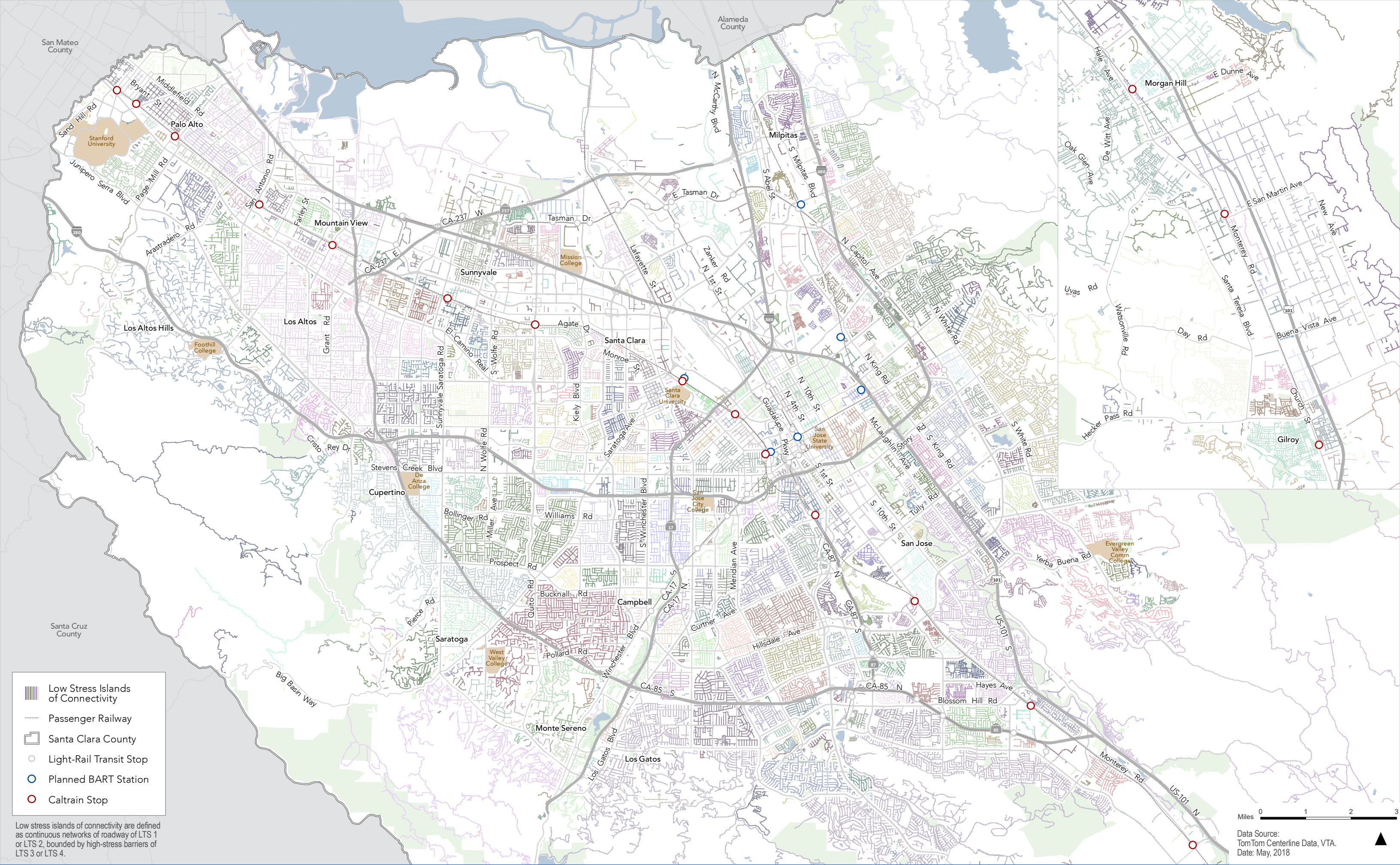








Existing Bicycle Infrastructure (February 2016)	Passenger Railway
— Bicycle Path (196 Miles)	Santa Clara County
— Cycle Track (2 Miles)	Light-Rail Transit Stop
— Bicycle Lane (520 Miles)	Planned BART Station
— Bicycle Route (149 Miles)	Caltrain Stop

Miles 0 1 2 3

Data Source:
TomTom Centerline Data, VTA.
Date: May, 2018

Existing Bicycle Infrastructure by Type in Santa Clara County



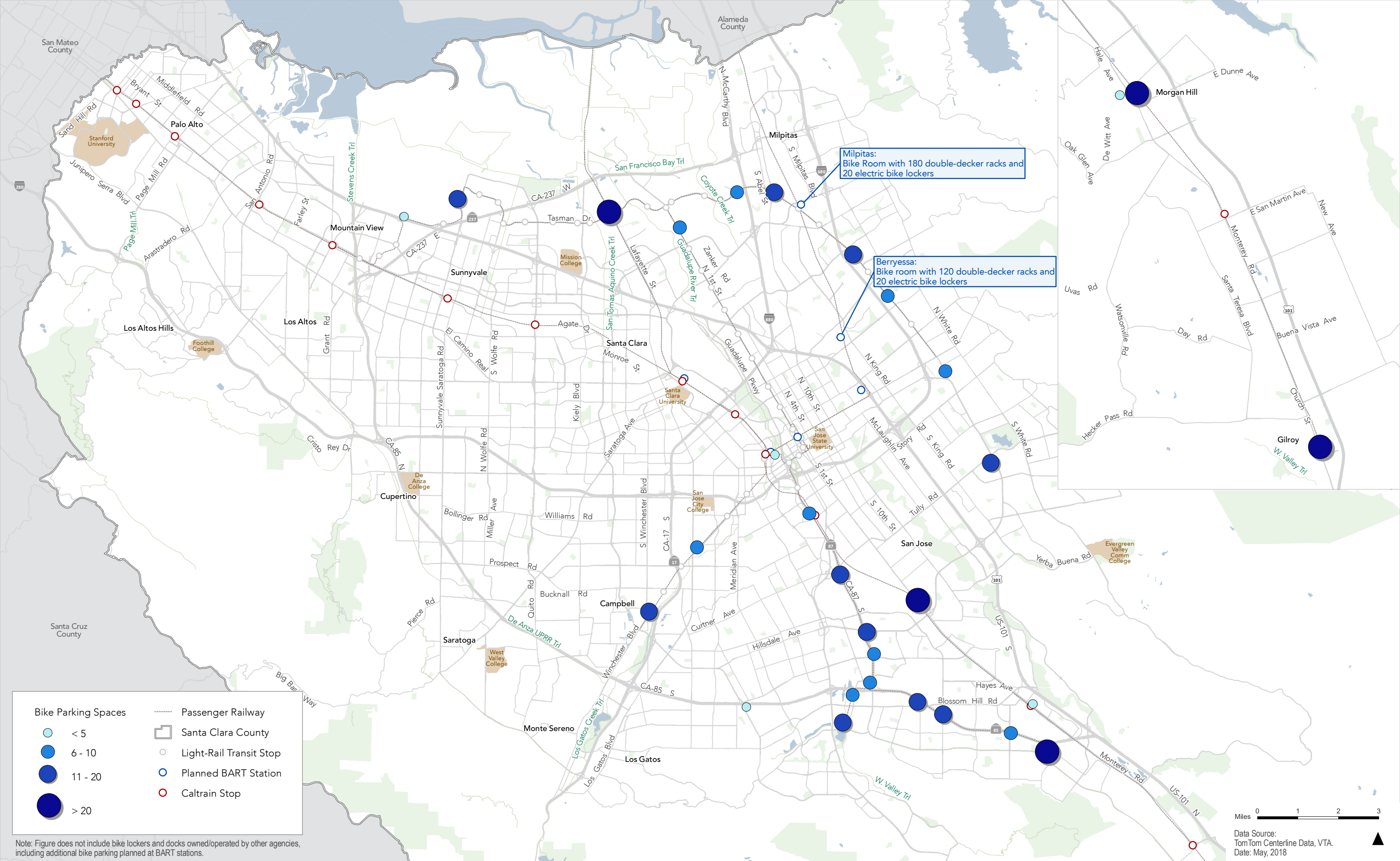
-  Low Stress Islands of Connectivity
-  Passenger Railway
-  Santa Clara County
-  Light-Rail Transit Stop
-  Planned BART Station
-  Caltrain Stop

Low stress islands of connectivity are defined as continuous networks of roadway of LTS 1 or LTS 2, bounded by high-stress barriers of LTS 3 or LTS 4.

Miles 0 1 2 3

Data Source:
TomTom Centerline Data, VTA.
Date: May, 2018

Islands of Connected, Comfortable, Low-Stress (LTS 1 or LTS 2) Bicycling Streets in Santa Clara County



Bike Parking Spaces

- < 5
- 6 - 10
- 11 - 20
- > 20

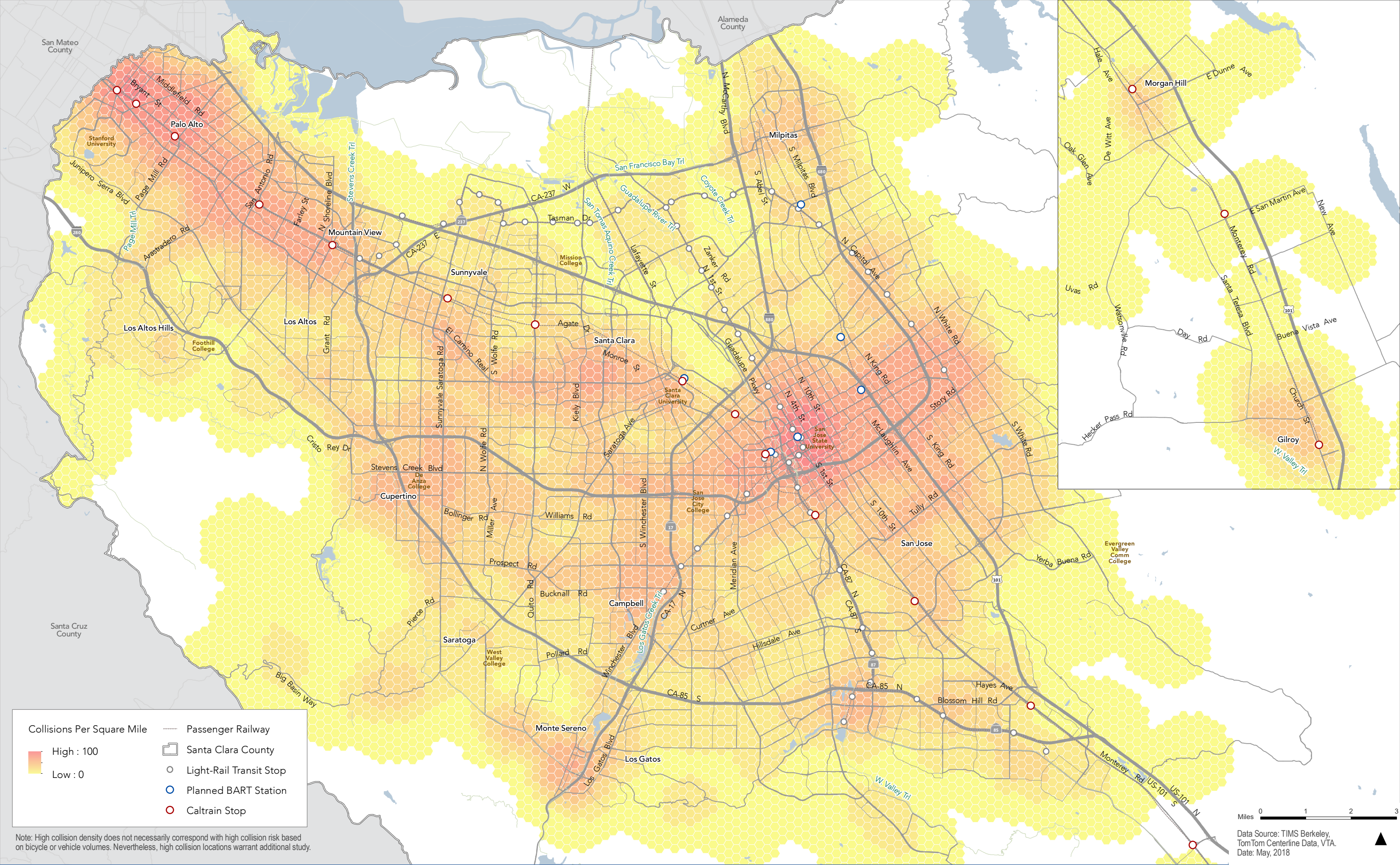
Passenger Railway

- Santa Clara County
- Light-Rail Transit Stop
- Planned BART Station
- Caltrain Stop

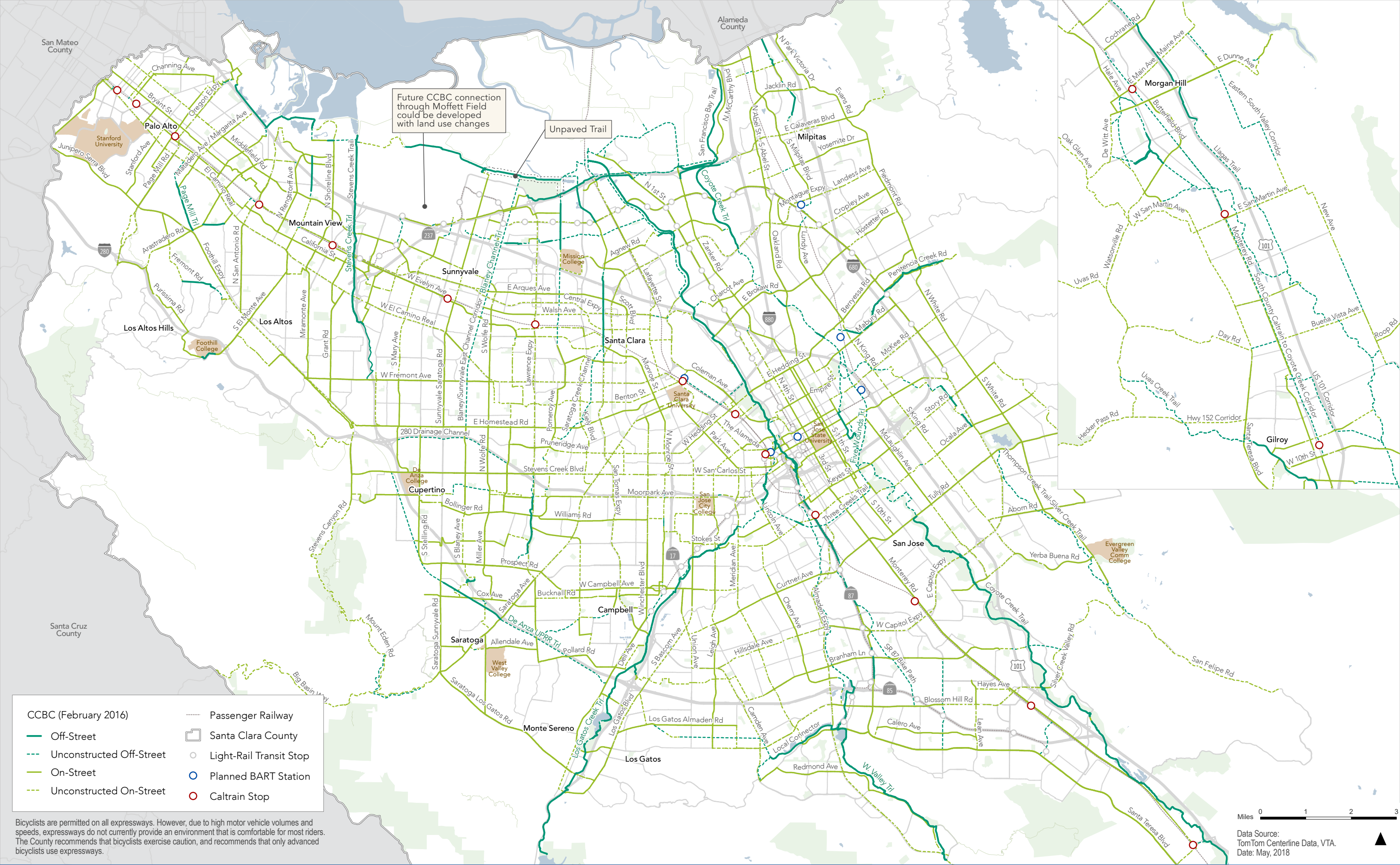
Note: Figure does not include bike lockers and docks owned/operated by other agencies, including additional bike parking planned at BART stations.

Miles 0 1 2 3

Data Source:
TomTom Centerline Data, VTA.
Date: May, 2018



Bicycle Collisions in Santa Clara County from 2009-2014



Future CCBC connection through Moffett Field could be developed with land use changes

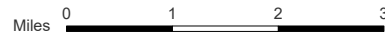
Unpaved Trail

CCBC (February 2016)

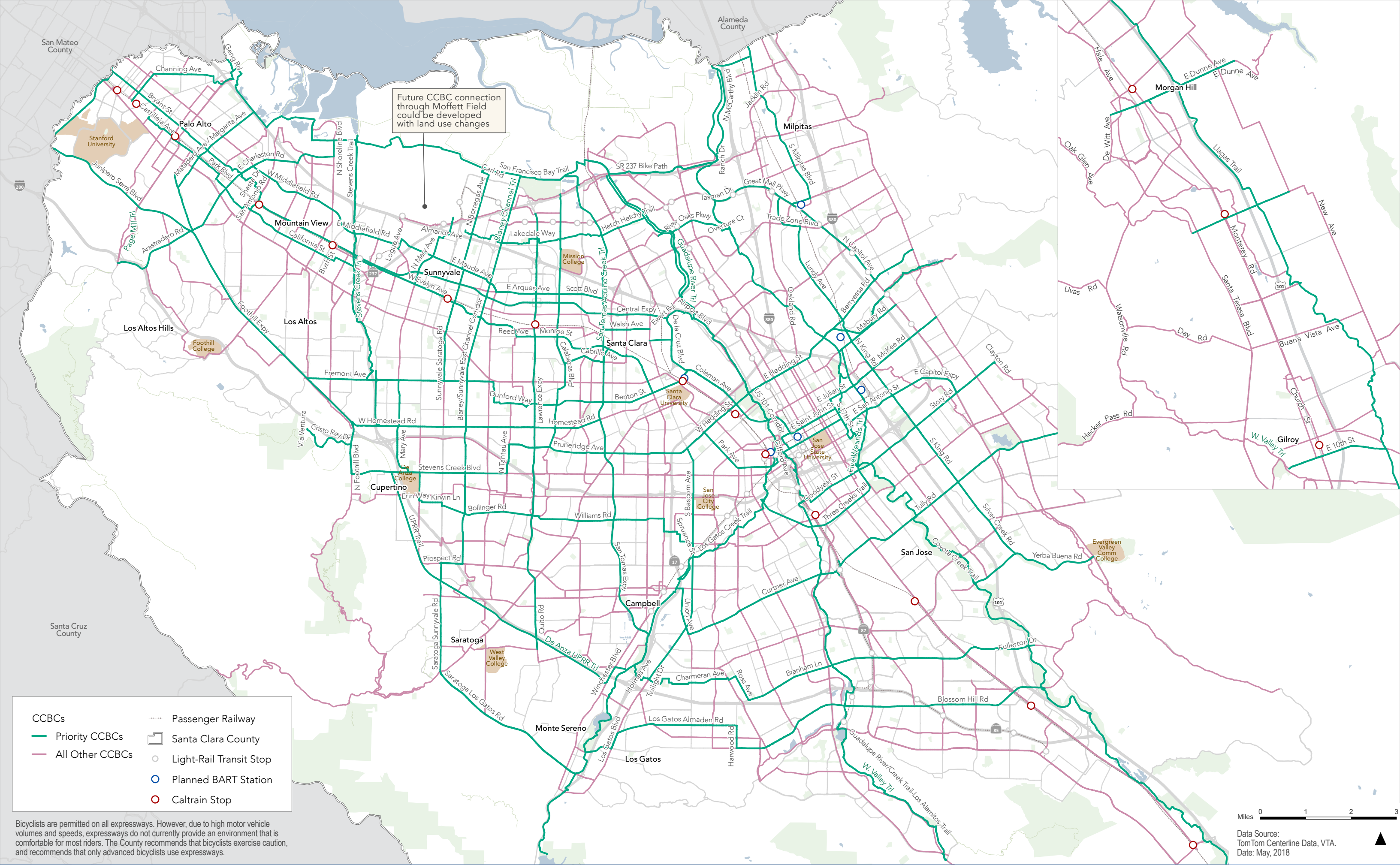
- Off-Street
- - - Unconstructed Off-Street
- On-Street
- - - Unconstructed On-Street

— Passenger Railway
 Santa Clara County
○ Light-Rail Transit Stop
○ Planned BART Station
○ Caltrain Stop

Bicyclists are permitted on all expressways. However, due to high motor vehicle volumes and speeds, expressways do not currently provide an environment that is comfortable for most riders. The County recommends that bicyclists exercise caution, and recommends that only advanced bicyclists use expressways.



Data Source: TomTom Centerline Data, VTA.
Date: May, 2018



Future CCBC connection through Moffett Field could be developed with land use changes

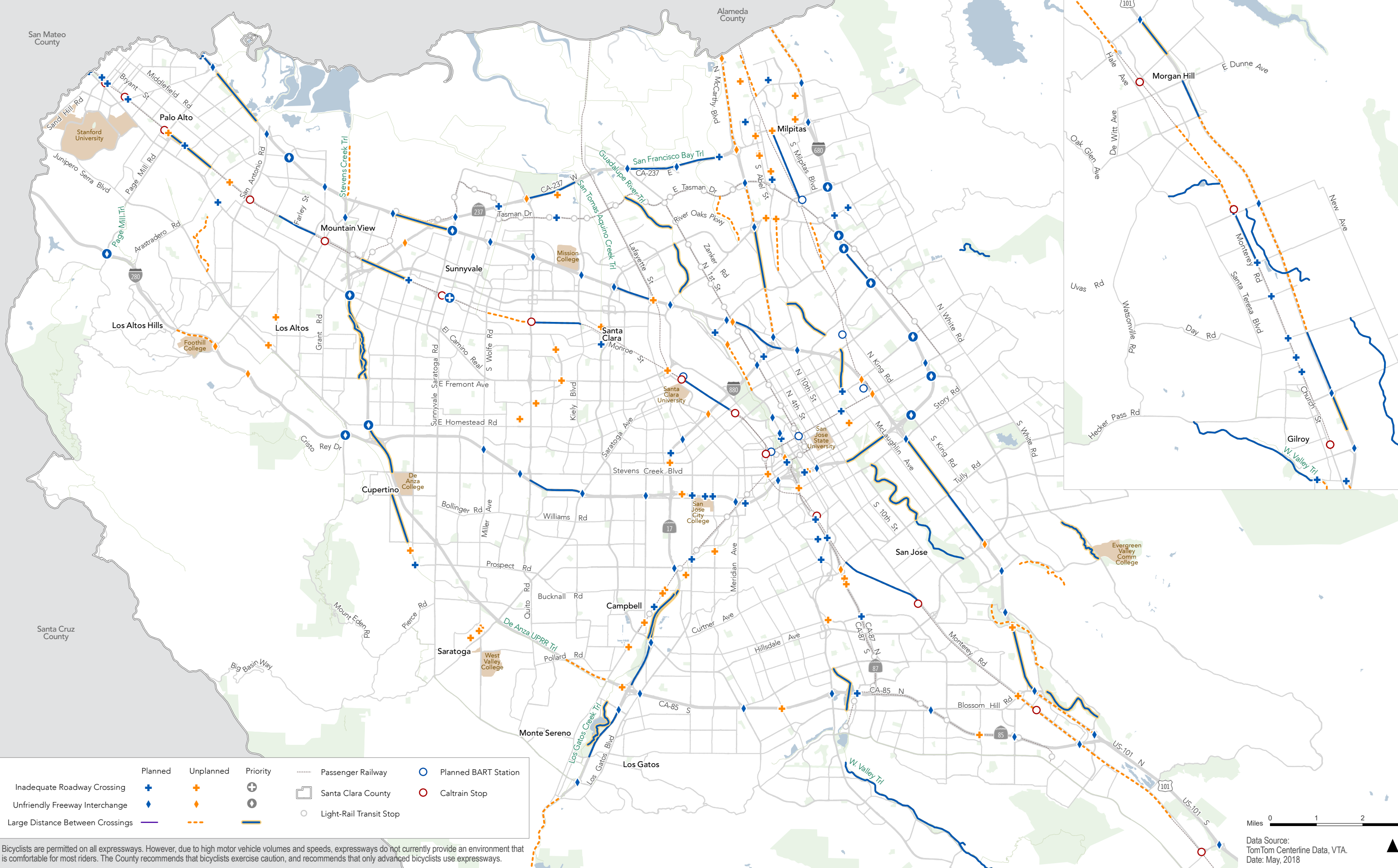
- CCBCs
- Priority CCBCs
- All Other CCBCs
- Passenger Railway
- Santa Clara County
- Light-Rail Transit Stop
- Planned BART Station
- Caltrain Stop

Bicyclists are permitted on all expressways. However, due to high motor vehicle volumes and speeds, expressways do not currently provide an environment that is comfortable for most riders. The County recommends that bicyclists exercise caution, and recommends that only advanced bicyclists use expressways.

Miles 0 1 2 3

Data Source: TomTom Centerline Data, VTA.
Date: May, 2018

Priority CCBCs



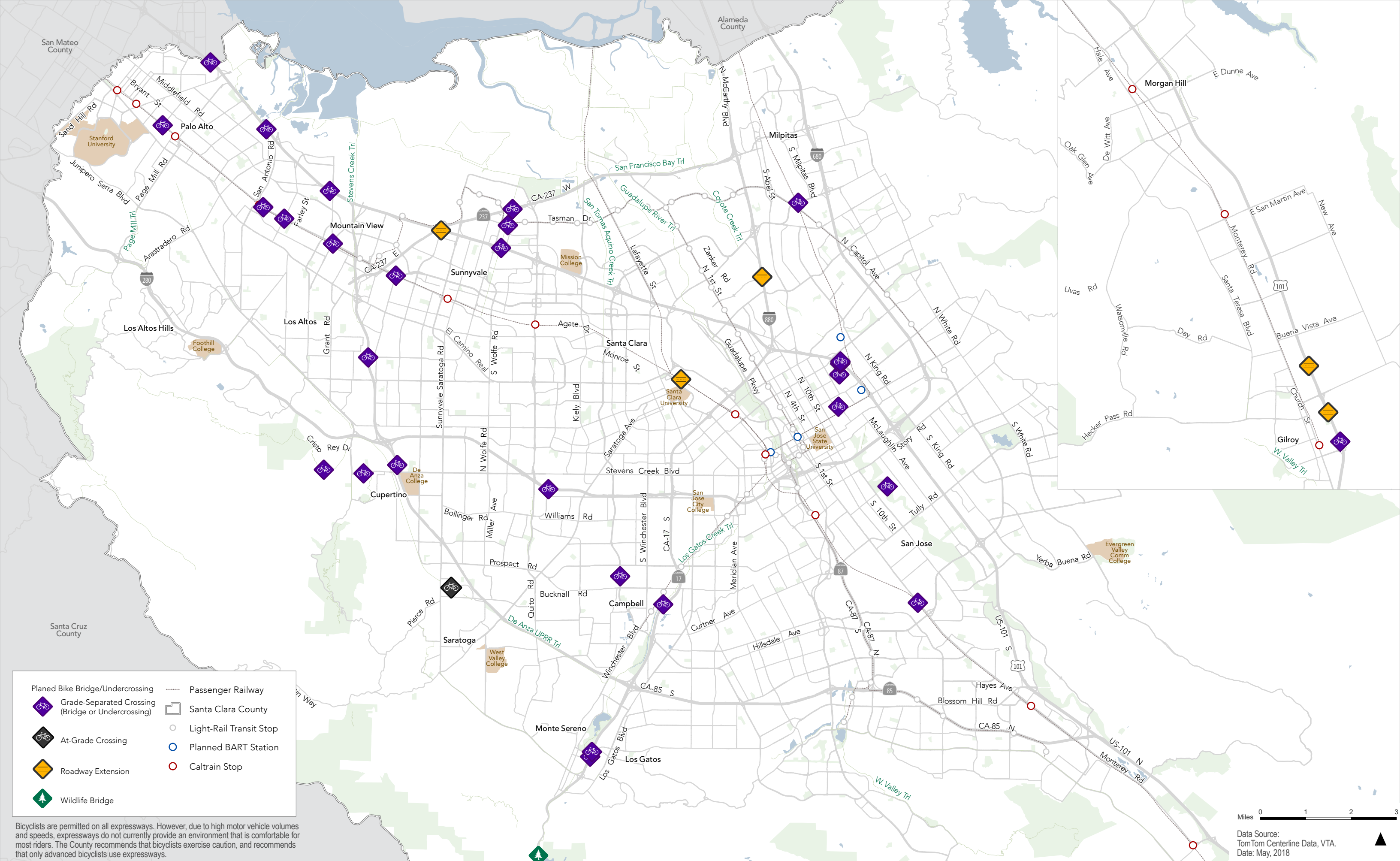
Inadequate Roadway Crossing	Planned +	Unplanned +	Priority ⊕	Passenger Railway	Planned BART Station
Unfriendly Freeway Interchange	◆	◆	⊙	Santa Clara County	Caltrain Stop
Large Distance Between Crossings	—	- - -	—	Light-Rail Transit Stop	

Bicyclists are permitted on all expressways. However, due to high motor vehicle volumes and speeds, expressways do not currently provide an environment that is comfortable for most riders. The County recommends that bicyclists exercise caution, and recommends that only advanced bicyclists use expressways.



Data Source: TomTom Centerline Data, VTA.
Date: May, 2018

Across Barrier Connections (2017)



Planned Bike Bridge/Undercrossing	Passenger Railway
Grade-Separated Crossing (Bridge or Undercrossing)	Santa Clara County
At-Grade Crossing	Light-Rail Transit Stop
Roadway Extension	Planned BART Station
Wildlife Bridge	Caltrain Stop

Bicyclists are permitted on all expressways. However, due to high motor vehicle volumes and speeds, expressways do not currently provide an environment that is comfortable for most riders. The County recommends that bicyclists exercise caution, and recommends that only advanced bicyclists use expressways.



Data Source:
TomTom Centerline Data, VTA.
Date: May, 2018

Planned Bike Bridge/Undercrossings