



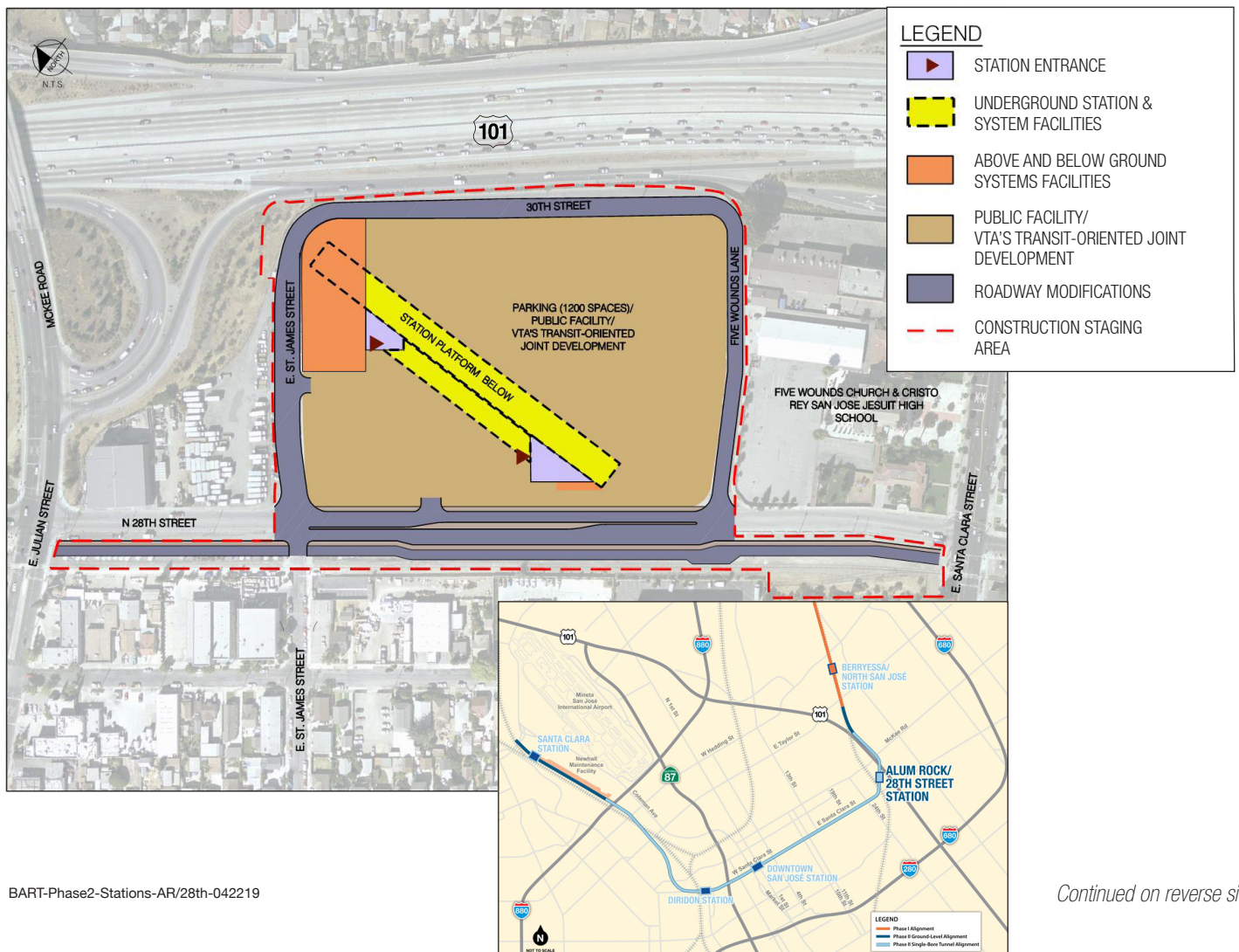
FACT SHEET: VTA's BART Silicon Valley Phase II Extension Project

Alum Rock/28th Street Station

Overview

VTA's BART Silicon Valley Phase II Project is a six-mile, four-station extension that will bring BART train service from Berryessa/North San José through downtown San José to the City of Santa Clara. The Phase II Project is planned to include an approximately five-mile tunnel which includes three underground stations (Alum Rock/28th Street, Downtown San José, and Diridon), one ground-level station (Santa Clara), as well as general and maintenance facilities.

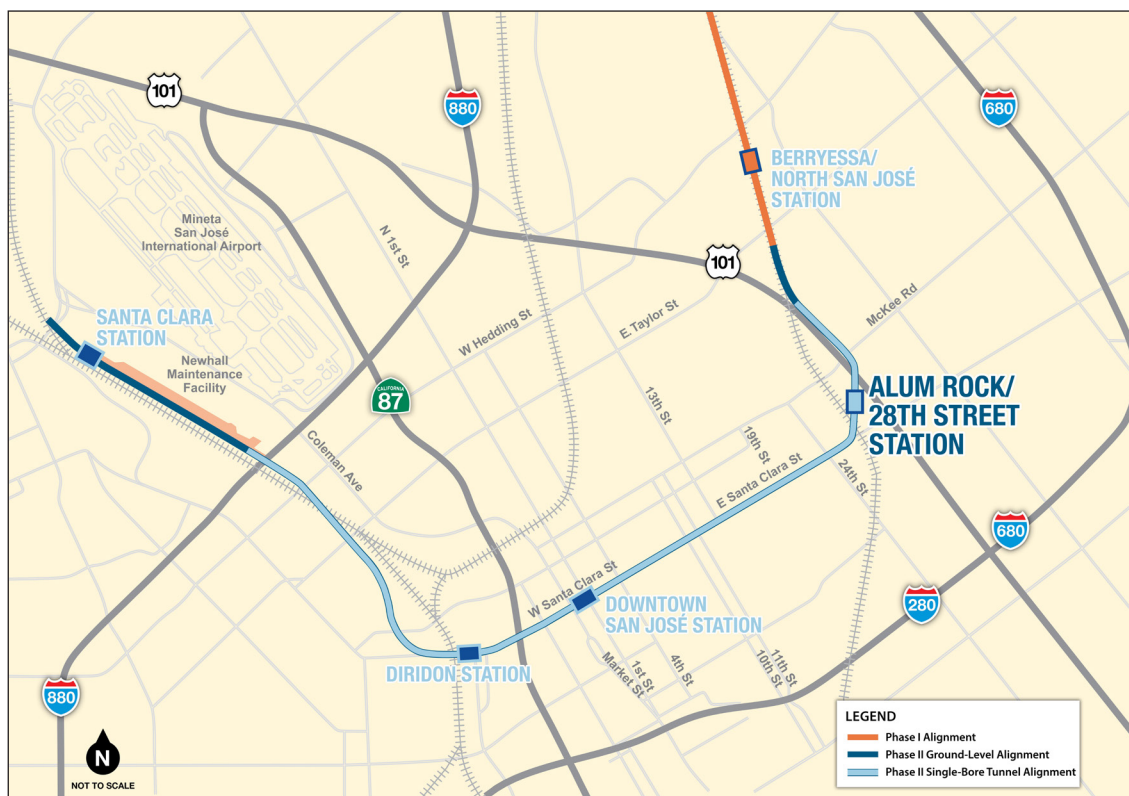
The Alum Rock/28th Street Station is planned to be located adjacent to the Five Wounds Portuguese National Church between US 101 and 28th Street just north of East Santa Clara Street in San José. The surrounding neighborhood is currently a mix of industrial, low density residential, and ground floor commercial and retail. Little Portugal, as the neighborhood is known, is full of history and beautiful architecture. It is one of the largest Portuguese communities in the nation. The Portuguese restaurant ADEGA, which is the first and only Michelin-starred restaurant in San José, is in the neighborhood.





Alum Rock/28th Street Station at a Glance

- 10,300 daily passengers projected in 2035
- A ground-level plaza, below-ground concourse and boarding platform
- Kiss-and-ride (passenger drop-off) facilities along N. 28th Street
- Passenger and shuttle/bus drop-off areas
- Bicycle storage facilities
- Multi-level parking structure next to station
- Pedestrian connection along the south side of the station area at N. 28th Street
- Accommodations for the planned Five Wounds Trail along N. 28th Street
- Proposed Transit-Oriented Joint Development, which is walkable, mixed use development that is located close to transit



Contact Us

(408) 321-7575 English



(408) 321-2300 Español 粵/華語
Tagalog Tiếng Việt
Português 한국어

(408) 321-2330 TTY



www.vta.org/bart



facebook.com/bartsv



vtabart@vta.org



twitter.com/bartsv