



FACT SHEET VTA's BART Silicon Valley Phase II Project

Project Benefits

VTA's BART Silicon Valley Phase II Project is a six-mile, four-station extension that will bring BART train service from Berryessa/North San José through downtown San José to the City of Santa Clara. The Phase II Project is planned to include an approximately five-mile tunnel with three underground stations (28th Street/Little Portugal, Downtown San José, and Diridon), one ground-level station (Santa Clara), and a maintenance facility. Benefits from the Phase II Project include:



Frequent and reliable train service that will connect BART to VTA light rail and bus, Amtrak, ACE, Caltrain, Capitol Corridor and intercity bus service.



Improving transit hubs to accommodate rail, bus, bicycle and pedestrian travel modes to improve and expand healthy and green travel options.



Reduce vehicles on the roadway network as well as greenhouse gases.



Partnering with communities to deliver a project that realizes the surrounding community visions for each station area.



Investing in transit oriented communities to provide increased access to jobs, housing and education, making commuting without a car possible.



In addition to creating thousands of jobs throughout design and construction, the Phase II Project will boost the area's economy, which supports future growth and more jobs long after the project ends.

BENEFITS BY 2035

Weekday riders on VTA's BART Phase II Extension

52,000



27 Million

Reduction of Annual Vehicle Miles Traveled (compared to if the project were not built)

22,340

Reduction of Metric Tons of CO² from vehicular emissions

PHASE II TRANSIT ORIENTED COMMUNITIES WILL INCLUDE



1.675 Million sq. ft.

of new office space



160,000 sq. ft.

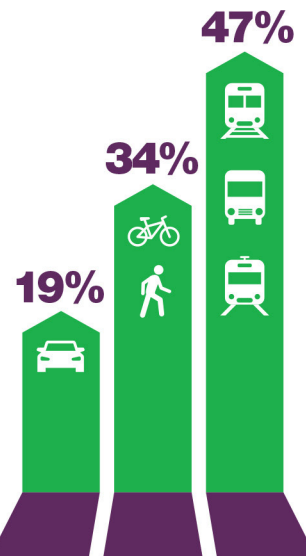
of new retail space



500

new housing units

PHASE II MODES OF ACCESS TO BART SYSTEM





Ring the Bay

VTA's BART Silicon Valley Phase II Project connects the counties of San Francisco, San Mateo, Alameda, Contra Costa and Santa Clara – finally ringing the Bay Area with frequent and reliable rail service.



Contact Us

(408) 321-7575 English



Español 粵/華語
(408) 321-2300 Tagalog Tiếng Việt
Português 한국어

(408) 321-2330 TTY



vta.org/bart



facebook.com/bartsv



vtabart@vtabsv.com



twitter.com/bartsv