



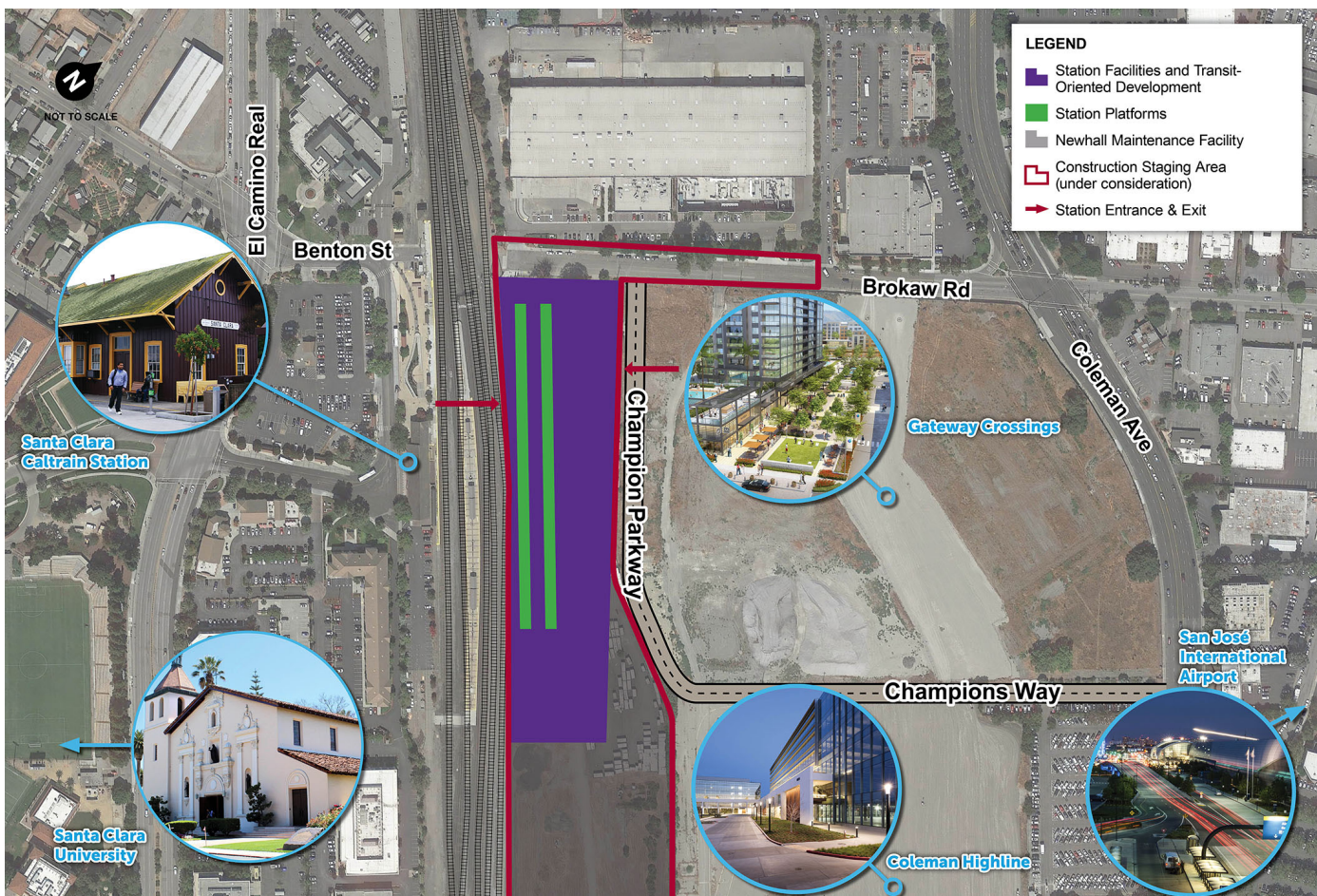
FACT SHEET VTA's BART Silicon Valley Phase II Project

Santa Clara Station

Overview

VTA's BART Silicon Valley Phase II Project is a six-mile, four-station extension that will bring BART train service from Berryessa/North San José through downtown San José to the City of Santa Clara. The Phase II Project is planned to include an approximately five-mile tunnel with three underground stations (28th Street/Little Portugal, Downtown San José, and Diridon), one ground-level station (Santa Clara), and a maintenance facility.

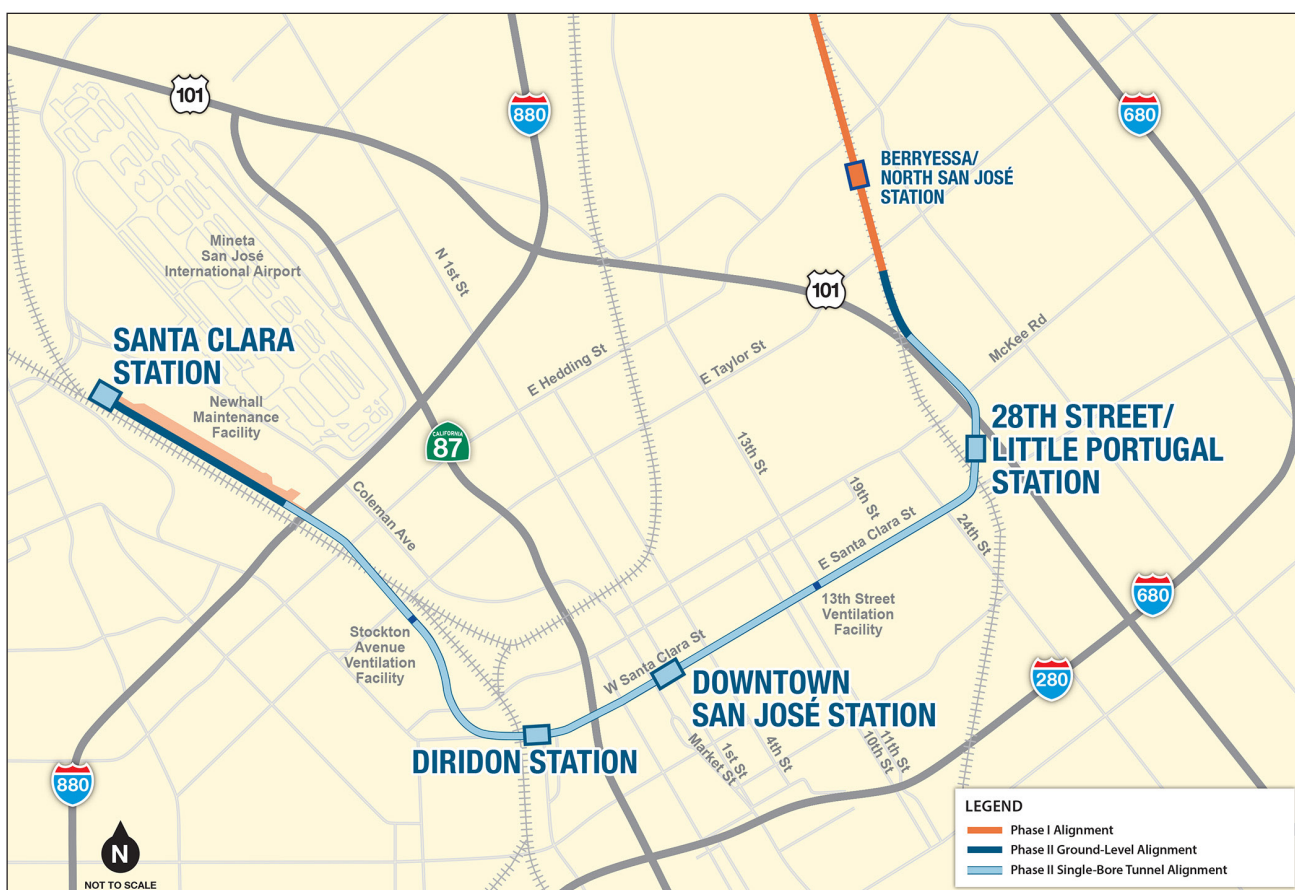
Santa Clara is located in the center of Silicon Valley and is the headquarters of several high-tech companies. It is also home to Santa Clara University, the oldest institution of higher learning in the state of California, and Levi's Stadium, home of the NFL's San Francisco 49ers. Santa Clara is bordered by the cities of San José, Sunnyvale, and Cupertino. The Santa Clara Station is planned to be located adjacent to the existing Santa Clara Transit Center.





Santa Clara Station at a Glance

- 7,800 daily passengers projected in 2035
- Ground-level station and boarding platforms with a below-ground concourse
- Pedestrian access connecting the concourse level of the BART station to the Santa Clara Caltrain plaza and to Brokaw Road
- Passenger pick-up/drop-off facilities as well as bus and shuttle loading areas
- Bicycle storage facilities
- Multi-level parking structure
- Transit-Oriented Development, which is walkable, mixed use development that is located close to transit, will be integrated into station facilities



Contact Us

(408) 321-7575 English



Español 粵/華語
(408) 321-2300 Tagalog Tiếng Việt
Português 한국어

(408) 321-2330 TTY



vta.org/bart



facebook.com/bartsv



vtabart@vtabsv.com



twitter.com/bartsv