



FACT SHEET VTA's BART Silicon Valley Phase II Project

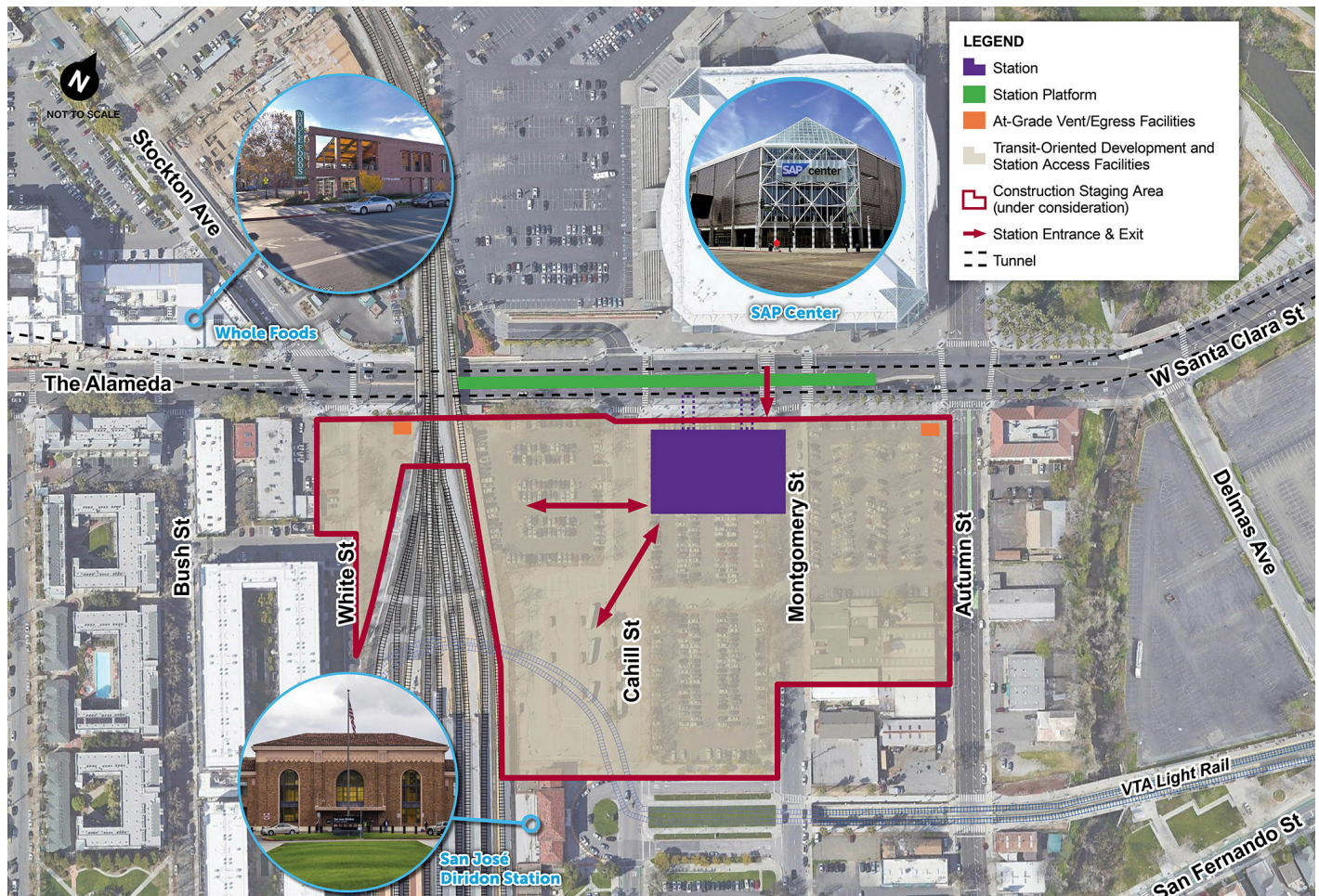
Diridon Station

Overview

VTA's BART Silicon Valley Phase II Project is a six-mile, four-station extension that will bring BART train service from Berryessa/North San José through downtown San José to the City of Santa Clara. The Phase II Project is planned to include an approximately five-mile tunnel with three underground stations (28th Street/Little Portugal, Downtown San José, and Diridon), one ground-level station (Santa Clara), and a maintenance facility.

Diridon Station is currently the central passenger rail depot for San José. It also serves as a transit hub for Santa Clara County and Silicon Valley. The station is served by Caltrain, Altamont Corridor Express (ACE), VTA light rail, and Amtrak's Capitol Corridor, as well as bus services by Amtrak Thruway Bus, Monterey-Salinas Transit, Santa Cruz Metro (Highway 17 Express), and local VTA buses and employer shuttles.

Integration of the Diridon BART Station, including entrance locations and walkways, will be coordinated through the Diridon Integrated Station Concept Plan that is being conducted in partnership with VTA, Caltrain, City of San José, and California High Speed Rail. The Diridon BART Station is planned to be located just south of West Santa Clara Street, between Autumn Street and the San José Diridon Caltrain Station.





Diridon Station at a Glance

- 9,600 daily passengers projected in 2035
- Below-ground station, concourse and boarding platforms
- Pedestrian connections would be provided to the existing San José Diridon Station with access to commuter/intercity rail, light rail, buses, and the proposed High Speed Rail
- Passenger pick-up/drop-off facilities as well as bus and shuttle loading areas
- Bicycle storage facilities
- Transit-Oriented Development, which is walkable, mixed use development that is located close to transit, will be integrated into station facilities



Contact Us

(408) 321-7575 English



Español 粵/華語
(408) 321-2300 Tagalog Tiếng Việt
Português 한국어

(408) 321-2330 TTY



vta.org/bart



facebook.com/bartsv



vtabart@vtabsv.com



twitter.com/bartsv