



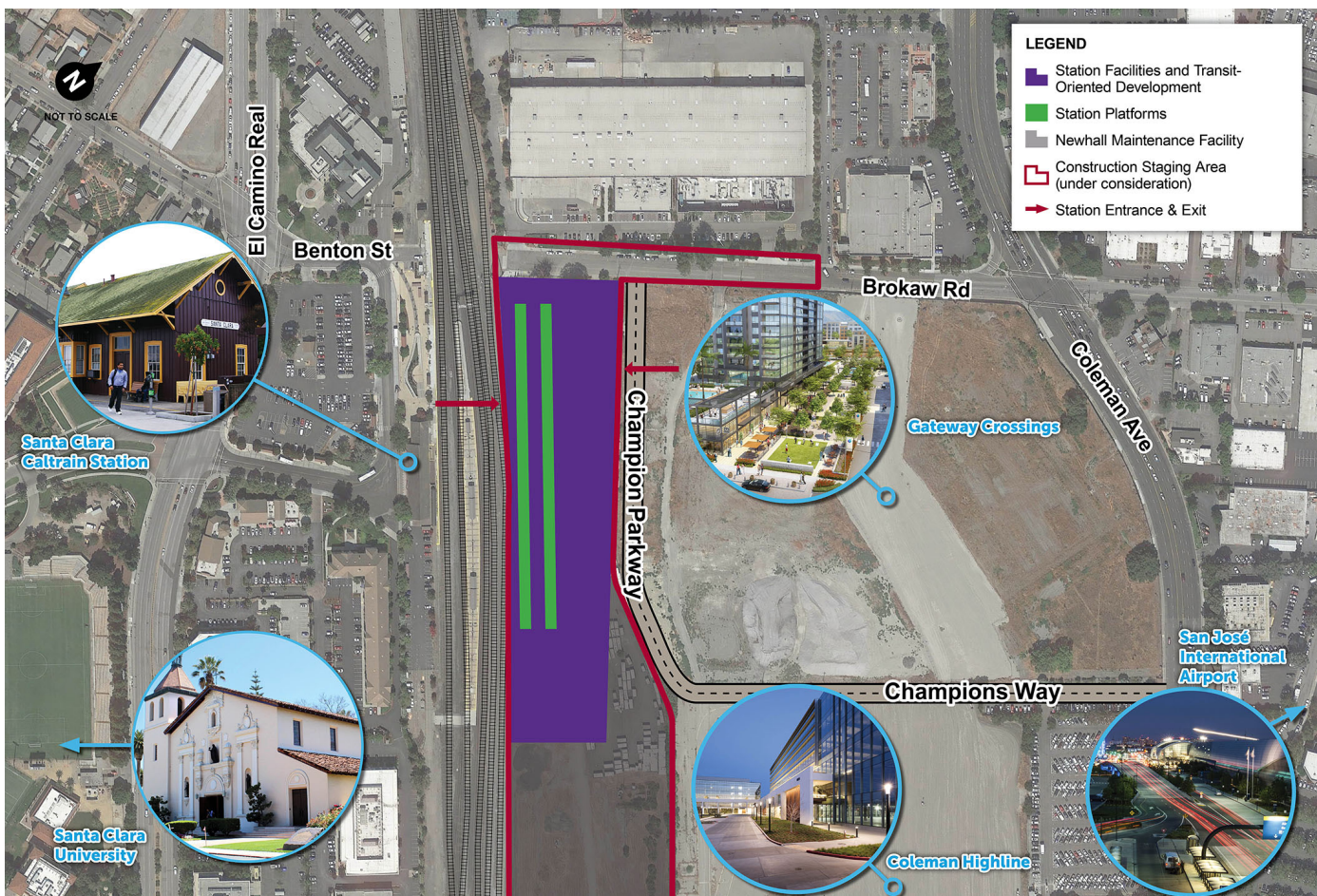
FACT SHEET VTA's BART Silicon Valley Phase II Project

Santa Clara Station

Overview

VTA's BART Silicon Valley Phase II Extension (Phase II) Project is a six-mile, four-station extension that will expand BART service from Berryessa/North San José through downtown San José to the City of Santa Clara. The Phase II Project is planned to include an approximately five-mile tunnel, three stations with underground platforms and boarding (28th Street/ Little Portugal, Downtown San José, and Diridon), one ground-level station (Santa Clara), a train maintenance and storage facility and additional facilities.

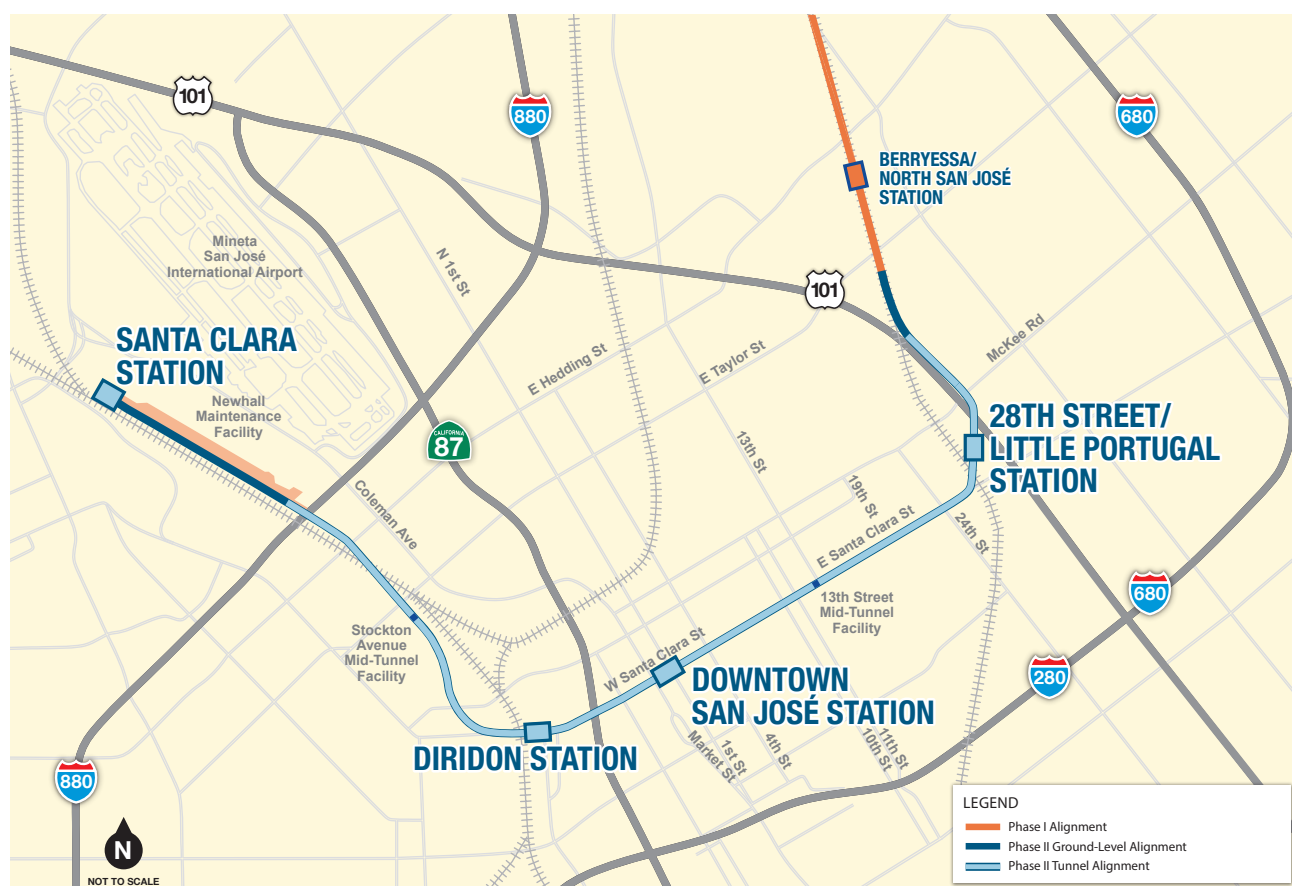
Santa Clara is located in the center of Silicon Valley and is the headquarters of several high-tech companies. It is also home to Santa Clara University, the oldest institution of higher learning in the state of California, and Levi's Stadium, home of the NFL's San Francisco 49ers. Santa Clara is bordered by the cities of San José, Sunnyvale, and Cupertino. The Santa Clara Station is planned to be located adjacent to the existing Santa Clara Transit Center.





Santa Clara Station at a Glance

- 7,800 daily passengers projected in 2035
- Above ground station and platforms
- Pedestrian access connecting the concourse level of the BART station to the Santa Clara Caltrain plaza and to Brokaw Road
- Passenger pick-up/drop-off facilities as well as bus and shuttle loading areas
- Bicycle storage facilities
- Multi-level parking structure
- Transit-Oriented Development, which is walkable, mixed use development close to transit, will be integrated into station facilities




Contact Us

(408) 321-7575 English

(408) 321-2300 Español 粵/華語
Tagalog Tiếng Việt
Português 한국어

(408) 321-2330 TTY

 vta.org/bart

 facebook.com/bartsv

 vtabart@vtabsv.com

 twitter.com/bartsv