

# 2016 Measure B Update - April & May 2021



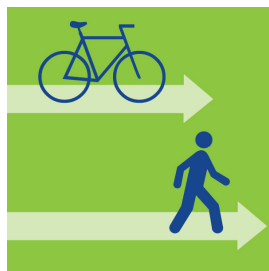
## LOCAL STREETS & ROADS

- Preparing FY22 and FY23 allocations.
- Allocation through FY21: \$170M.
- Expenditure through May 2021: \$67.7M.



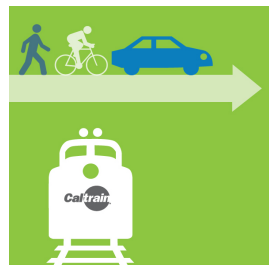
## BART PHASE II

- No 2016 Measure B activities in April or May 2021.
- Allocation through FY21: \$150M.



## BICYCLE & PEDESTRIAN

- Capital Projects: Executed agreement with Cupertino for Junipero Serra Trail, Central Segment project.
- Planning Studies: Call for Projects closed April 12th. Recommended top five projects for approval at May Committees.
- Education & Encouragement: Preparing FY22 and FY23 allocations.
- Allocation through FY21: \$33.3M.
- Expenditure through May 2021: \$47K.



## CALTRAIN GRADE SEPARATION

- No 2016 Measure B activities in April or May 2021.
- Allocation through FY21: \$38M.
- Expenditure through May 2021: \$405K.



## CALTRAIN CORRIDOR CAPACITY IMPROVEMENTS

- No 2016 Measure B activities in April or May 2021.
- Allocation through FY21: \$13.1M.
- Expenditure through May 2021: \$2.9M.



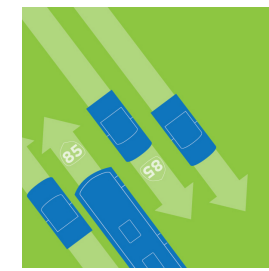
## HIGHWAY INTERCHANGES

- US 101/De La Cruz/Trimble IC: Bid opening rescheduled to June.
- US 101 SB to SR 87 SB Connector Ramp & US 101 SB On-Ramp from Story Rd: Construction bidding scheduled for late June.
- FY20 and FY21 program modifications approved by the board.
- Allocation through FY21: \$206.9M.
- Expenditure through May 2021: \$45.3M.



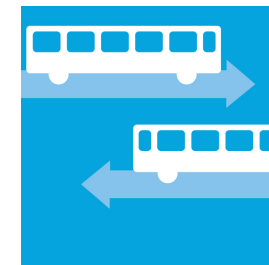
## COUNTY EXPRESSWAYS

- Improvements at Page Mill & Hanover: Construction will begin in August.
- Allocation through FY21: \$50M.
- Expenditure through May 2021: \$5M.



## SR 85 CORRIDOR

- No 2016 Measure B activities in April or May 2021.
- Allocation through FY21: \$14.5M.
- Expenditure through May 2021: \$1.1M.



## TRANSIT OPERATIONS

- Innovative Transit Service Models: Board approved retaining the first cycle balance of \$186,187 to augment the next call for projects.
- Allocation through FY21: \$66.6M.
- Expenditure through May 2021: \$56.9M.



## PROGRAM ADMINISTRATION

Approved by the Board:

- 1) Formula-based Program Categories & Administrative Cost Category FY22 & FY23 biennial budget allocation
- 2) Project readiness criteria & prioritization methodologies for Need/Capacity-based program categories
- 3) 10-year program and biennial budget principles
- 4) Appointment to the 2016 MBCOC in the Education Administration Professional position

- Allocation through FY21: \$13.2M.
- Expenditure through May 2021: \$5.6M.