

## Board of Directors



**Scott Johnson**  
Auditor General  
(contracted function)



**Carolyn Gonot**  
General Manager/  
CEO



**Evelynn Tran**  
General Counsel



**Deborah Dagang**  
Chief Planning  
& Programming  
Officer

Bicycle and Pedestrian Planning  
Congestion Management Program  
Land Use Development Review  
Programming; Project Funds  
Transit Planning  
Transit Service Planning  
Transportation Planning  
Travel Demand Forecasting & GIS



**David Hill**  
Chief Operating  
Officer

Facilities  
Operations Analysis & Reporting  
Regional Transportation Services  
Transit Operations  
Transit Planning



**Casey Emoto**  
Chief Engineering  
& Program  
Delivery Officer

Capital Highway Program  
Engineering Technical Services  
Environmental Program  
Express Lanes Program  
Sustainability Program  
Transit Engineering  
Transportation Engineering



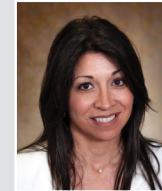
**Takis Salpeas**  
Chief BART  
Delivery Officer

**BART Phase I:**  
Milpitas Transit Center  
Berryessa Transit Center  
**BART Phase II:**  
28th Street/Little Portugal Station  
Downtown San Jose Station  
Diridon Station  
Santa Clara Station  
Tunnel & Portals  
Transit Oriented Communities



**Sylvester Fadal**  
Chief  
Administrative  
Officer

Human Resources  
Employee Health & Wellness  
Procurement & Contracts  
Materials Management  
Workforce Development  
Human Capital/Talent Acquisition  
Bus & Rail Technical Training  
Bus & Rail Maintenance Training  
Technology



**Angelique Gaeta**  
Chief of System  
Safety & Security

Environmental Health & Safety  
Fare Enforcement  
Private Security  
Safety Auditor  
Sworn Law Enforcement  
System Safety & Compliance



**Jim Lawson**  
Chief External  
Affairs Officer

Board Office  
Community Engagement  
Creative Services  
Customer Service  
Government Affairs  
Marketing  
Media Relations



**Kathleen Kelly**  
Interim Chief  
Financial Officer

Finance & Budget Administration  
Investment Services  
Real Estate  
Transit Oriented Development  
Enterprise Risk Management  
Grants & Fund Allocation