



**ATTACHMENT C:**  
VTA IRRIGATION GUIDELINES

## VTA DESIGNATED MATCHING PRODUCTS (DMP) LIST

Designated Matching Product (DMP) are a set of VTA-accepted products and materials for use in a contract or procurement package. DMPs are designated by manufacturer's brand or trade name. DMPs are used in order to match other products in use on a particular public improvement either completed or in the course of completion.

Instructions to Designer: Whenever a DMP<sup>1</sup> is included in a contract or procurement package, the designer shall verify with manufacturer that product is still available. Verify if product is still compliant with applicable regulations including Buy America requirements for Federally-funded projects. If product information is out-of-date or otherwise incorrect, do the following: Designer shall inform VTA Project Manager and recommend an alternative product for approval; VTA personnel shall inform VTA Group responsible for item.

Name of Item	Product Specification
Satellite Irrigation Controller	Jain-ET Water SmartBox Model 205W-XX (xx = Number of Stations from 8 to 48 stations are available, refer to <a href="https://jainsusa.com/etwater/controller/">https://jainsusa.com/etwater/controller/</a> and product information attached.
Controller Housing and Pedestal	ETWater appropriate pedestal. For outdoor locations: Brushed stainless steel heavy- duty weatherproof and vandal-resistant enclosure with lockable, hinged and gasketed door. Includes antenna.
Controller Protection	Jain-ETWater appropriate Transient Surge Arrestor (AC line protection). Install in the controller enclosure. Correctly ground for lightning protection as required for each controller.
Water Flow Meter	Jain-ETWater appropriate, line-mounted paddle wheel impeller type of corrosion resistant construction.

**VTA standard is cellular based communication with a 5-year data plan.**



Jain is a fully integrated global food / plant production company recognized by Harvard Business to be one of five global sustainability champions, the G-20 for lifting people out of poverty, and Fortune magazine for being a "Change the World Company." Our irrigation manufacturing capabilities include everything from behind the pump to the flush valve at the end of the lateral and everything in between. We lead the industry in manufacturing technology, owning both our extrusion and mold manufacturing equipment providers.

Jain leads plant science research globally across a variety of food crops and is staffed with some of the world's leading research scientists. With the Gandhi Library, Jain now houses the leading collection of the world's best plant science knowledge in a single facility. Our agronomic knowledge is integrated from our world class plant tissue culture operations through our food processing businesses. We research, educate, advance, manufacture, finance, propagate plants, and purchase produce for processing all in an effort to fulfill the Jain mission:

**"Leave This World Better Than You Found It"**

**Jain Irrigation, Inc.**

[www.jainsusa.com](http://www.jainsusa.com)

**Jain Customer Service**

Phone: (559) 485-7171

Fax: (800) 777-6162

**Western Manufacturing Facility**

2851 E. Florence Ave.

Fresno, CA 93721

**Northeastern Manufacturing Facility**

740 Water St.

Watertown, NY 13601

**ETwater Corporate Offices**

6 Hamilton Landing Suite 175

Novato, CA 94949



Please recycle after use.

AG-011 6/19 © 2019 Jain Irrigation, Inc. All rights reserved.





# ETWATER CONTROLLERS




**JAIN**

World Leader in Irrigation Technology







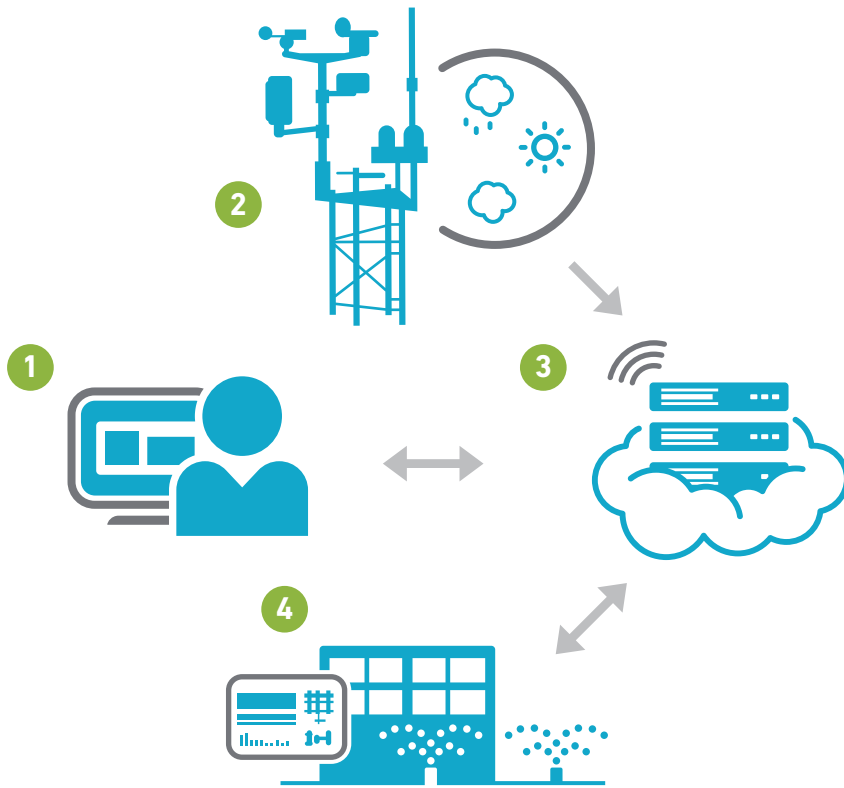


"Using ETwater weather-based irrigation controllers from JAIN we've reduced our landscape water use by 47 million gallons annually. It's meant a savings of \$125K yearly since we installed ETwater in 2015."

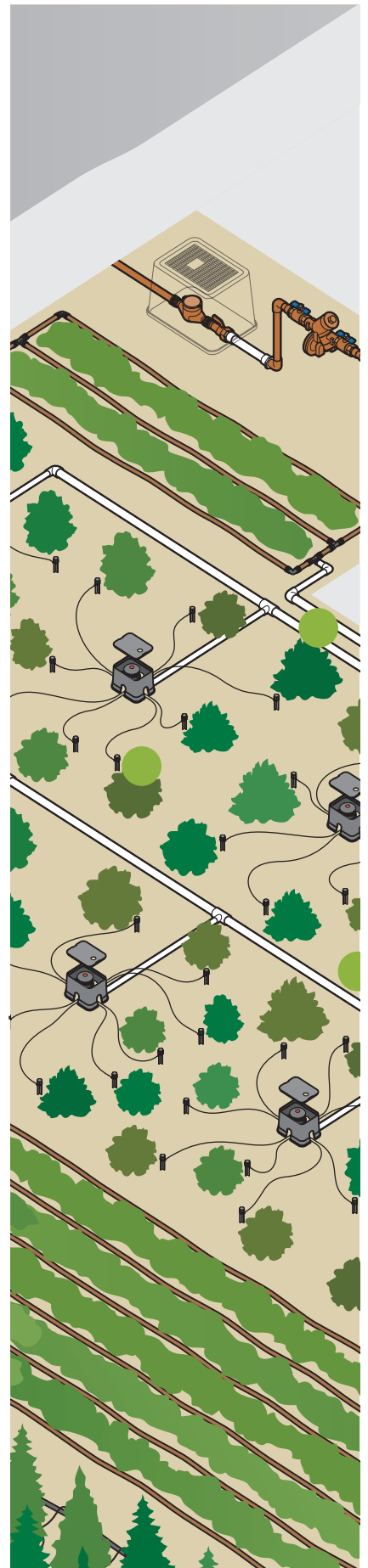
**Kenneth Olson, General Manager**

Sun City Grand HOA, Surprise, AZ

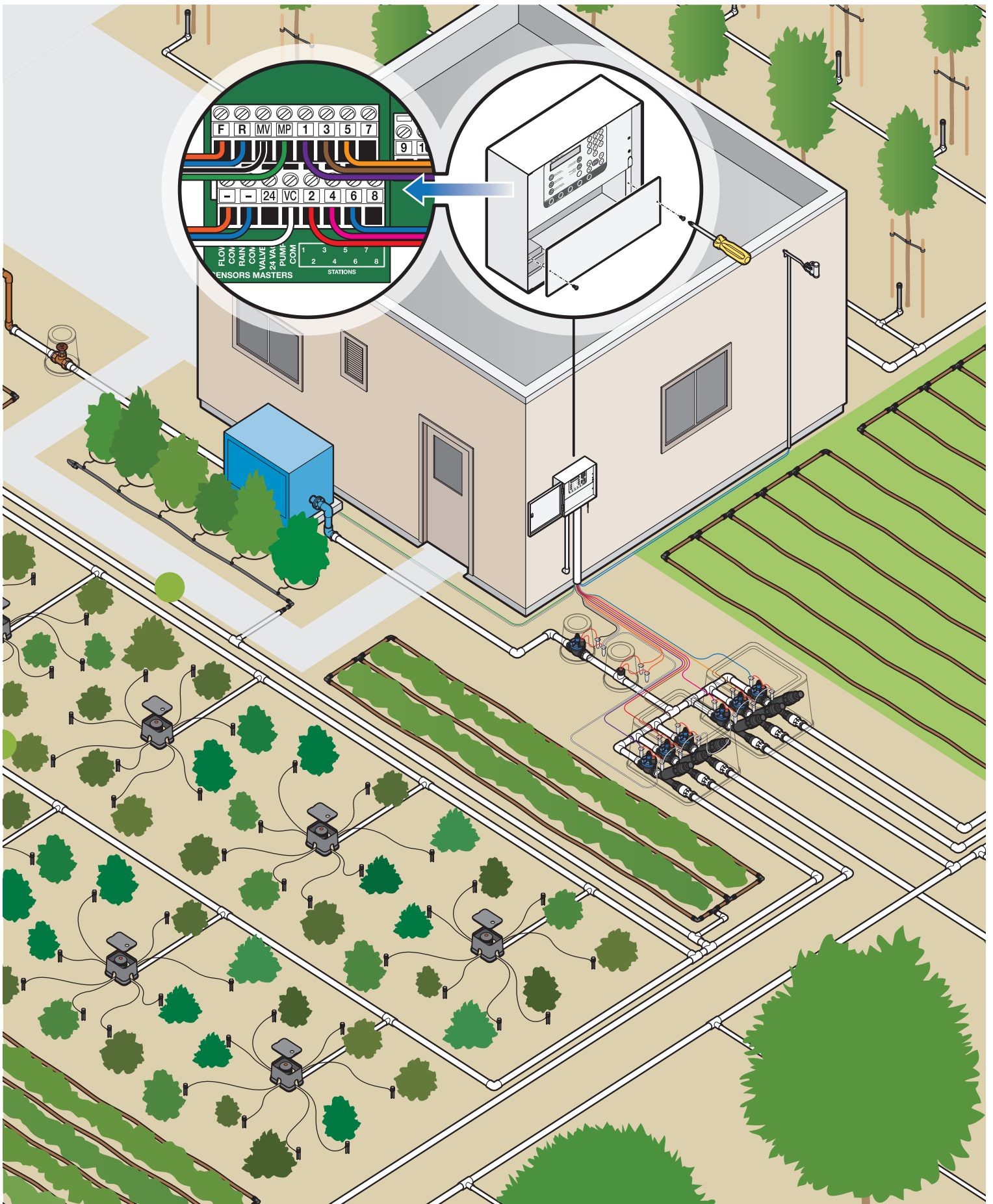
# How ETwater Controllers Work



1. Use the ETwater Manager online management system to set up your account by entering your landscape profiles. Then, install the ETwater smart controller.
2. Microclimate forecasts localized to latitude / longitude coordinates and cross-referenced to an exclusive hourly historical weather database.
3. ETwater servers access the weather data, compute evapotranspiration, and generate daily watering schedules for each landscape profile. Servers then connect wirelessly to ETwater smart controllers to exchange schedules and data.
4. ETwater smart controllers execute daily irrigation schedules.







# SmartBox

## Product Features

- Durable, weather resistant aluminum enclosure with locking cabinet for indoor or outdoor use
- Suitable for wall mounting and selected pedestal installations
- Manual operation of individual stations or all stations *(from 1-255 minutes in 1 minute increments)*
- Backlit display for viewing programs and manual valve operation
- Plug in interface for RainMaster remotes
- Connections for rain sensor, booster pump, master valve and flow sensor. Compatible with normally open or normally closed master valves and rain/freeze or wind sensors.
- Email alerts sent in the event of a station short or flow alarm
- EPA WaterSense certified.
- Made in the USA



## SmartBox Includes

- SmartBox controller is available in 8 station increments up to 48 stations
- Chassis mounted grounding lug for added lightning protection
- 120 VAC input and 24VAC output
- All 24VAC output terminals have surge protection rated up to 4KV in accordance with IEC 6100-4-5 standard
- All outputs protected by a 2.0 amp self resetting fuse
- Input power draw: 1.0 amp or less at 120 volts VAC
- Total controller output is 2.0 amps
- Non-volatile memory
- 3 year controller limited warranty
- FCC approved

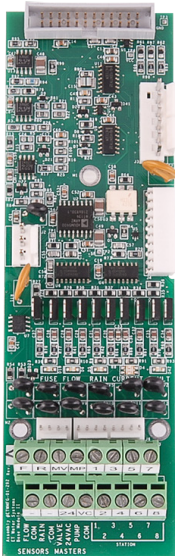
## Electrical Specifications

### SmartBox Model 205

- Station Capacity 8, 16, 24, 32, 40 or 48
- Dimensions 14.5" W x 12.5" H x 4.75" D
- Weight 10 lbs
- Wireless Communication

### Optional Accessories

- Covert antenna
- Universal Remote Adapter



8 Station Wiring Board

### SmartBox Model Numbers

205W-8	8 Station Model 205 Controller
205W-16	16 Station Model 205 Controller
205W-24	24 Station Model 205 Controller
205W-32	32 Station Model 205 Controller
205W-40	40 Station Model 205 Controller
205W-48	48 Station Model 205 Controller







# ETwater Manager

## Remote Management and Monitoring

- Weather-based watering schedules with ET and rain adjustments automatically generated each day for all stations, virtually eliminating overwatering and runoff
- At-A-Glance Dashboard aggregates information from all sites, accounts or controllers under management onto one screen, making site management remote and simple
- Manage Groups feature allows for quick changes to hundreds of stations simultaneously
- Advanced water budgeting tool provides information necessary to make budgetary adjustments
- Email alerts of interruptions in watering schedules provide site knowledge and allow for quick response
- Customized graphs and reports provide visibility into site performance and water usage
- Weather forecast feature incorporates forecasted rain fall into schedules, suspending irrigation *before* it rains
- Advanced customization is available, such as user-defined fixed watering schedules, user-defined water windows, establishment schedules and adjustable depletion levels
- Secure password protected access lets multiple users view and / or manage each account. View-only access is also available

