

# VTA's BART Silicon Valley Phase II Extension Project

Downtown/Diridon Community Working Group

February 7, 2017



## Agenda

- Follow-up Items & Work Plan
- Measure B Update
- Next Network Transit Redesign Update
- Embark! Community On-boarding Plan
- Project Updates
- Draft SEIS/SEIR Public Circulation Update
- Next Steps



## Role of the CWG

- Be project liaisons
- Receive briefings on technical areas
- Receive project updates
- Build an understanding of the project
- Collaborate with VTA
- Contribute to the successful delivery of the project



## Your Role as a CWG Member

- Attend CWG meetings
  - Bring your own binder (BYOB)
- Be honest
- Provide feedback
- Get informed
- Disseminate accurate information
- Act as conduits for information to community at large



### Role of the CWG Team

CWG Team Member	Role
Eileen Goodwin	Facilitator
Brandi Childress	Primary Outreach Contact
Leyla Hedayat	Phase II Project Manager
Jill Gibson	Technical Lead
Rosalynn Hughey	City of San Jose – Planning Liaison
Jessica Zenk	City of San Jose – DOT Liaison
John Ristow	City of San Jose – DOT Liaison



### Upcoming Meetings

VTA Board of Directors

- March 2, 2017 at 5:30 PM
- April 6, 2017 at 5:30 PM

VTA's BART Silicon Valley Program Ad Hoc Committee

- TBD

Diridon Station Joint Policy Advisory Board

- March 17, 2017 at 3:00 PM

Public meetings on specific technical topics - TBD



## Follow-Up Items & Work Plan



Solutions that move you 7

### Follow-Up Items

- Sent 2017 CWG meeting dates with Meeting Summary
- Added station location item to February agenda.
- Moved up the Diridon station options discussion to February agenda.
- Added Diridon Transportation Facilities Master Plan Update to September 2017 CWG meeting agenda
- Added link to scope for Single-Bore and Twin-Bore Independent Risk Assessment in meeting summary – can be found on [www.vta.org/bart/phaseIICWGs](http://www.vta.org/bart/phaseIICWGs) under “Phase II CWG Links”
- Research open data request for parking data information – in progress
- Researched bike locker strategy - BikeLink equipped indoor storage room is in addition to bike lockers and standard bike racks
- Researched bike locker utilization statistics and provided in meeting summary



Solutions that move you 8

# Measure B Update

Brandi Childress, VTA



## BART Phase II – Program Description

- \$1.5 Billion
- Capped at 25% of Program Tax Revenues
- Planning, engineering, construction, and delivery costs
- Extend BART from Berryessa in San Jose to Santa Clara
- Station locations:
  - Alum Rock/28<sup>th</sup> Street
  - Downtown San Jose
  - San Jose Diridon
  - Santa Clara



Solutions that move you 10

## BART Phase II – Proposed Guidelines



- Allocation based on funding plan to be developed as part of Federal Full Funding Grant Agreement



## Next Steps

Measure B Implementation Committee Work Plan

	December 2016	January 2017	February-April 2017	April-May 2017	June 2017
Schedule & Work Plan Overview					
TAC Workshop on Program Structures					
Program Guidelines Development					
Review Program Guidelines					
Review Final Draft Program					
Approve Final Draft Program					
Submit Draft Measure B FY18/FY19 Allocation					
Approve Measure B FY18/FY19 Allocation with VTA Budget					



# Next Network Transit Redesign Update

Jim Unites, VTA



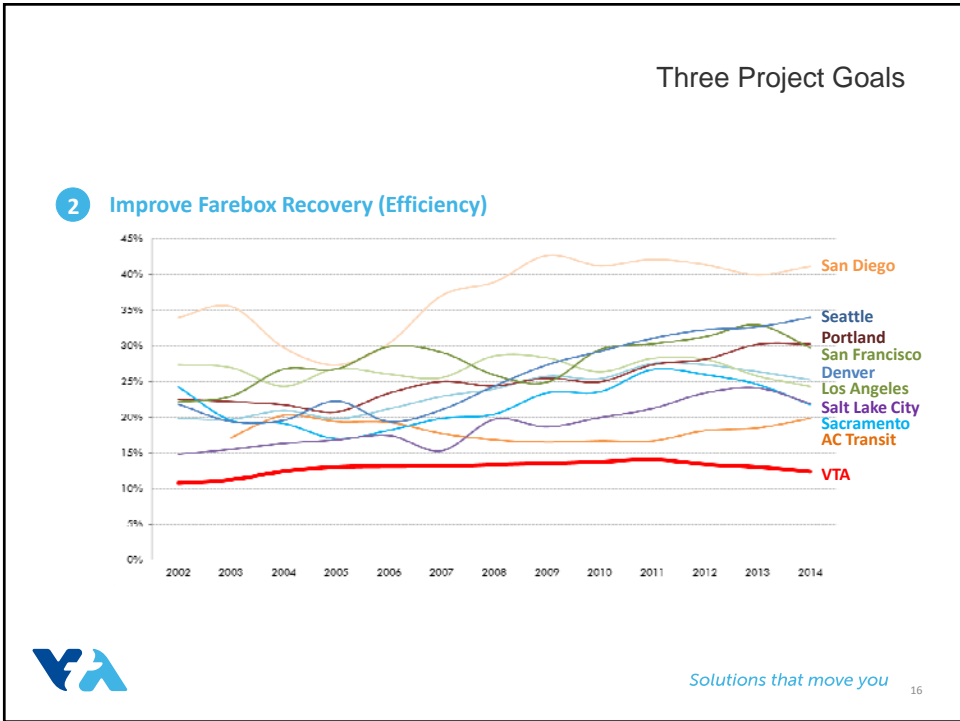
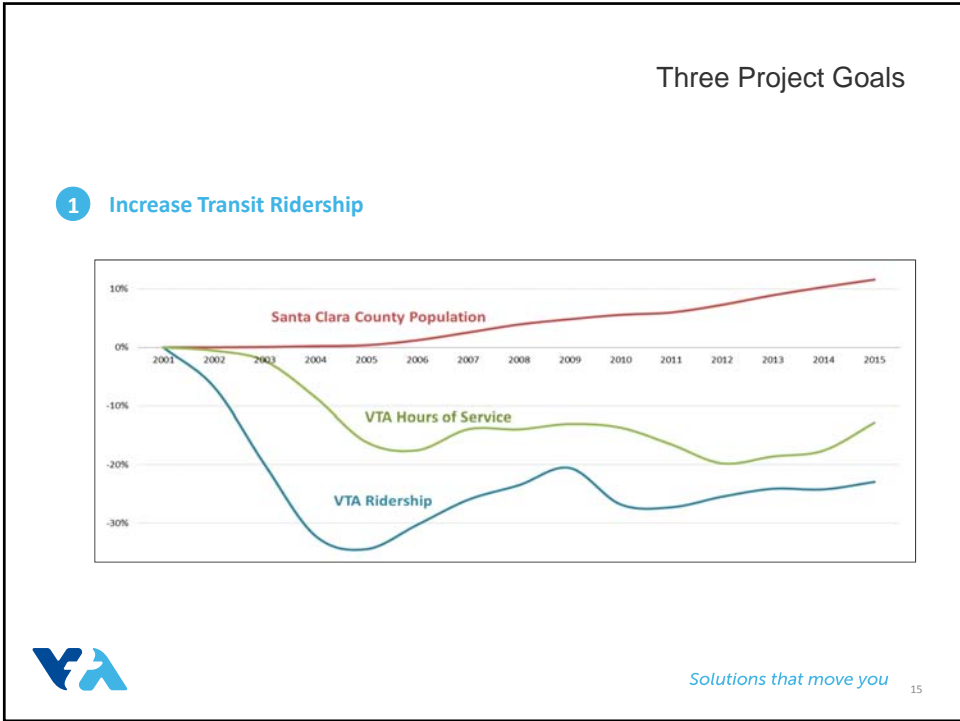
13

# Draft Transit Service Plan

VTA's Next Network

BART Community Working Group









### Three Project Goals


3 Connect to BART at Milpitas and Berryessa



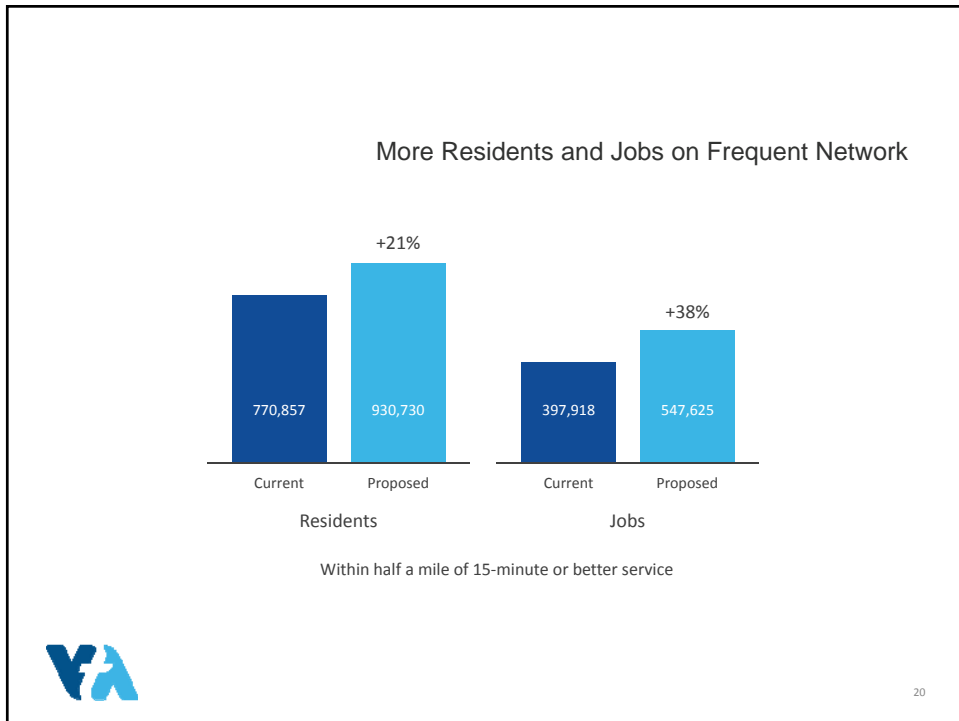
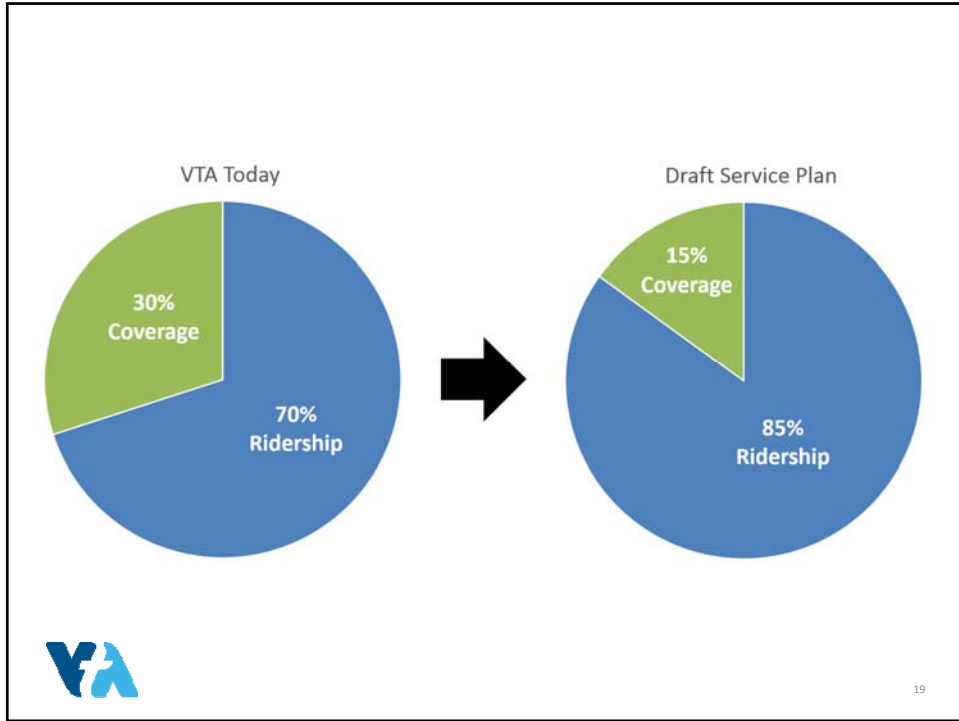
*Solutions that move you* 17

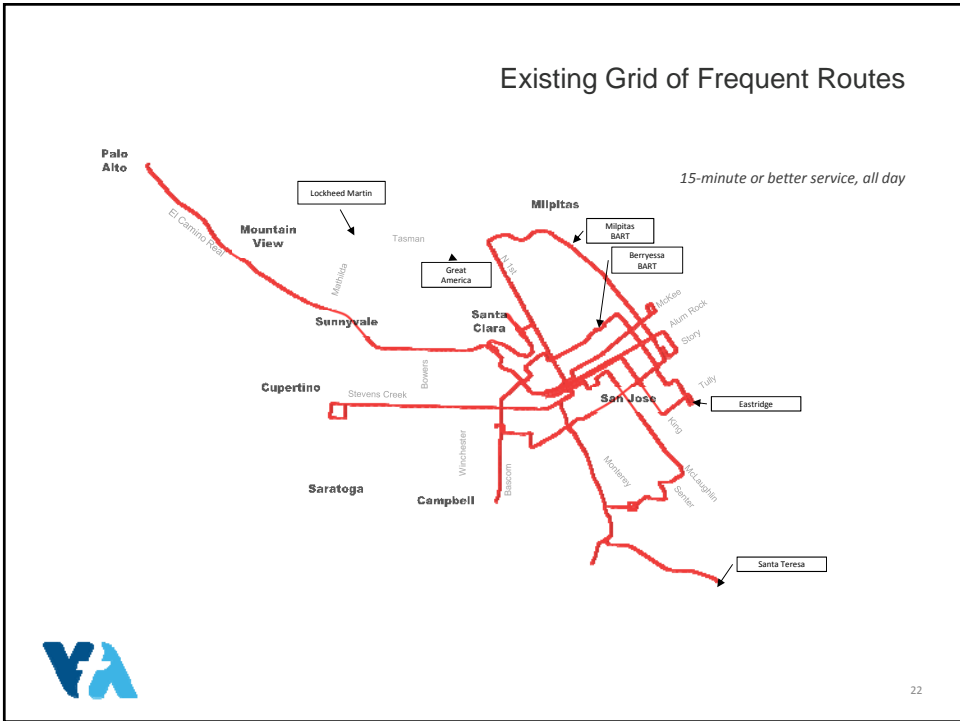
### Project Schedule

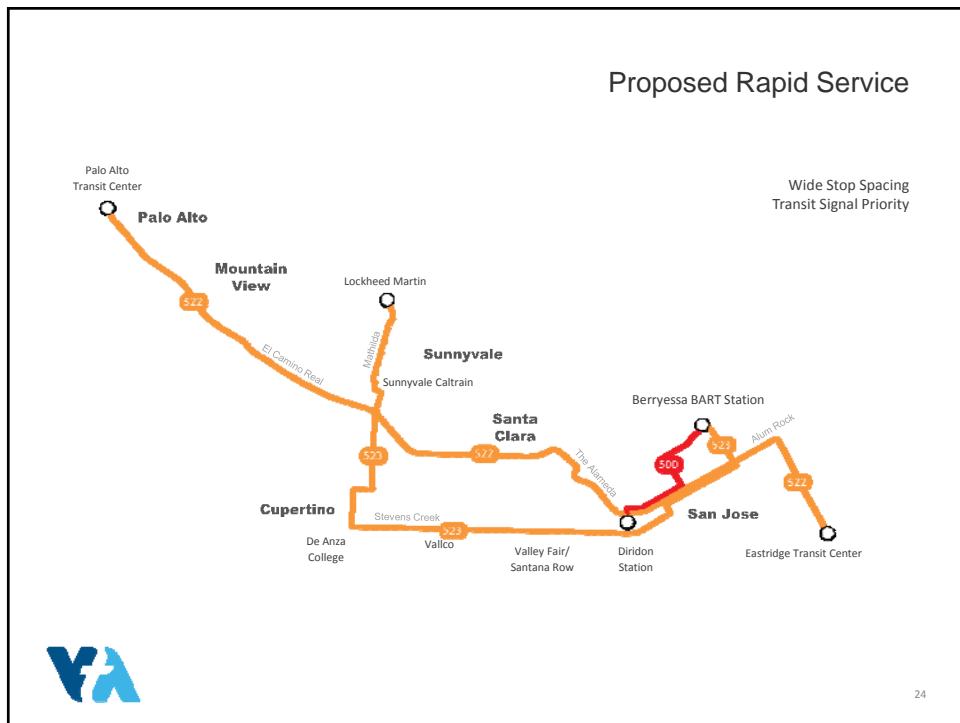
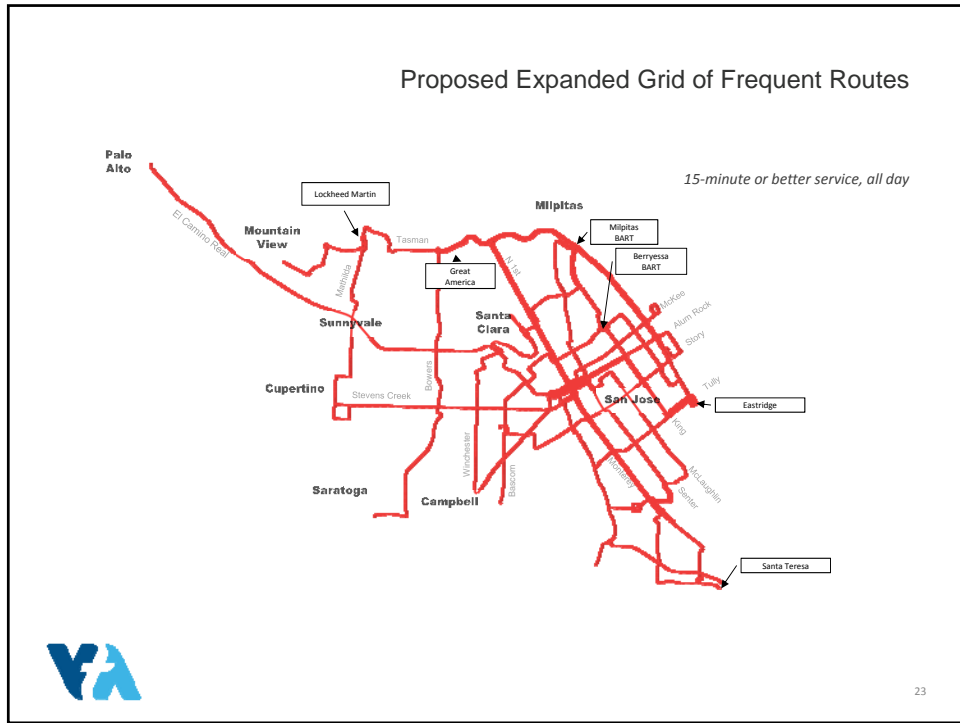
January 2016	Project Begins
March 2016	Choices Report released
April 2016	Three network concepts released for public review
May - Sept 2016	Community Engagement on 3 concepts
Nov 18, 2016	VTA Board: Design 85/15 Network
<b>Jan 5, 2017</b>	<b>Release of Draft Next Network Plan</b>
<b>Jan 6 – Feb 20 2017</b>	<b>Community Engagement</b>
Feb 20-28, 2017	Staff revises Plan in response to public comment
March 2017	VTA Committee review of Final Plan
April 6 2017	VTA Board approval of Final Plan



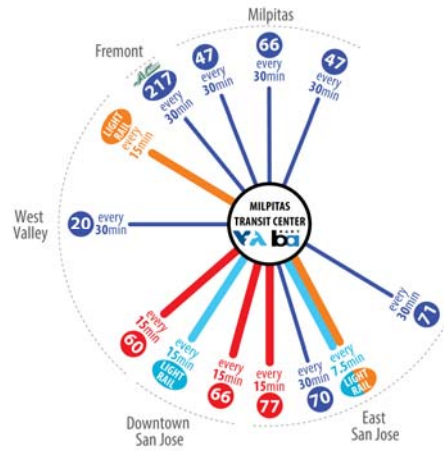
18







### BART Connections - Milpitas



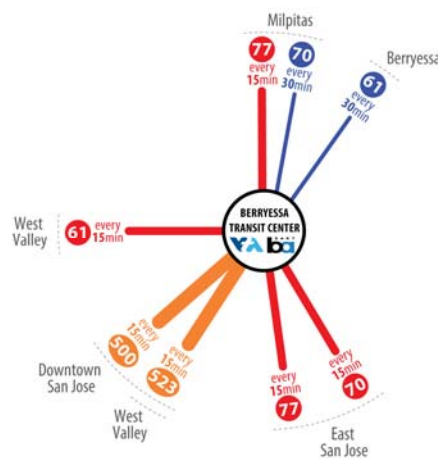
42

Buses & Light Rail Trains Per Hour



25

### BART Connections - Berryessa



28

Buses Per Hour



26



## VTA Express Bus network remains unchanged

(except routes to Fremont BART, replaced by BART extension)



29

## VTA Fare Study

**VTA is *considering*:**

- Reduced or free VTA-to-VTA transfers to support VTA's new transit service plan
  - Transfers valid for 90 or 120 minutes
  - Available for all Clipper users
- Further discounted fares for Youths
- Continuation or expansion of the TAP Program for eligible low-income persons
- Discontinuation of Community Bus fare type
- Adjusting all fares by approximately 12.5% to 25%
  - Adult base fare: \$2.00 -> \$2.25 or \$2.50

*Any fare changes would at least maintain current revenue*



Solutions that move you 30

**nextnetwork.vta.org**

project website

**ROUTE 60**

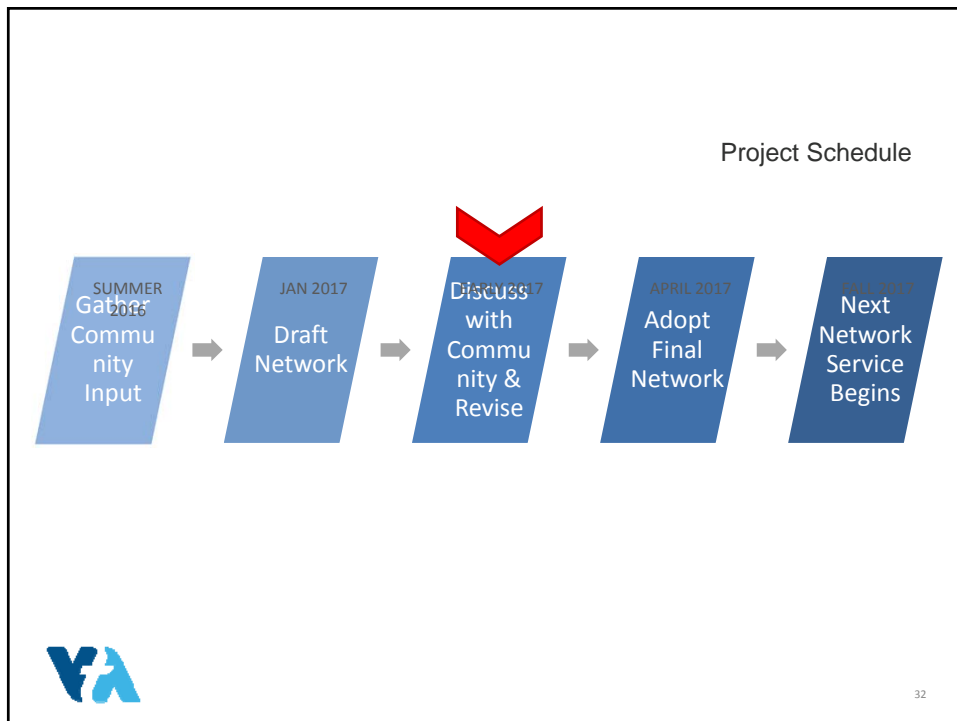
Combine with Route 90 to create new Route 60, which would connect Market Bay Area Airport to Milpitas BART Station, Valley Fair, Saratoga Row and Downtown Campbell. Increase weekend frequency.

Weekday Frequency	Saturday Frequency	Sunday Frequency
30 min	30 min	30 min
15 min	20 min	20 min
15 min	15 min	15 min

**Hours of Operation**

WEDNESDAY	1:00AM to 11:00PM
SATURDAY	1:00AM to 11:00PM
SUNDAY	1:00AM to 11:00PM

31





## Community Engagement

- 9 Public Meetings

Downtown San Jose (Jan 11)

Milpitas (Jan 12)

Cupertino (Jan 18)

Palo Alto (Jan 19)

Campbell (Jan 23)

Mountain View (Feb 6)

East San Jose (Feb 13)

Gilroy (Feb 15)

South San Jose (Feb 16)

- Guest Presentations (SPUR, TransForm, CalWorks...)
- 5 Webinars
- City Council Presentations
- City Staff Presentations
- Title VI-Focused Outreach



33

# Embark!

## Community On-boarding Plan for BART Silicon Valley

Brandi Childress, VTA



34



# EMBARK!

Community On-boarding Plan for BART Silicon Valley



February 2017




Santa Clara Valley  
Transportation  
Authority  
*Solutions that move you*

## Objectives of EMBARK? Educate and Promote

Who?	When?
What?	How?
Where?	Why?

### Tier 1 vs. Tier 2 Stakeholders



*Solutions that move you* 36

### Educate: Late Spring - Fall 2017



Campaigns / Themes:

- System Testing
- Service
- Operations
- Safety and Security

Delivering the Message (*in many languages*):

- Public Meetings / Webinars / Telephone Town Halls
- Quarterly Mailed Newsletter / Brochures
- “How to” Videos / Tutorials
- Digital Communications
- Station Tours



### Come and Kick the Proverbial Tires!



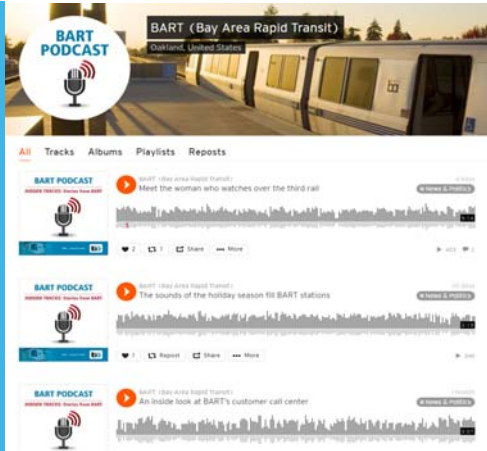
Station Tour Educational Program

- Monthly to Bimonthly Schedule
- Prioritize Tier One Stakeholders
- Virtual Tours



### Promote: Fall - Late 2017

- Leverage Partnerships:
  - ✓ BART TV, Podcasts
  - ✓ Cities, County, Greater Bay Area
  - ✓ Community Working Groups
  - ✓ Neighborhood Associations
  - ✓ Transit/Bicycle Advocacy Groups
- Billboards along 680 and 880
- Massive Online Campaign
- Transit Fairs
- Media Days
- Radio Ads
- Videos



### EMBARK!



- Your Connection to the South Bay (BARTable campaign) – BART riders
- Freedom to Roam/Explore the Bay Area – New riders
- Upgrade your Commute Portfolio – VTA riders



## The Big Show



Cutting the Ribbon on the Largest Infrastructure Investment in Santa Clara County

- Late 2017 celebration highlighting PARTNERSHIPS
- Phase II Record of Decision, good timing!



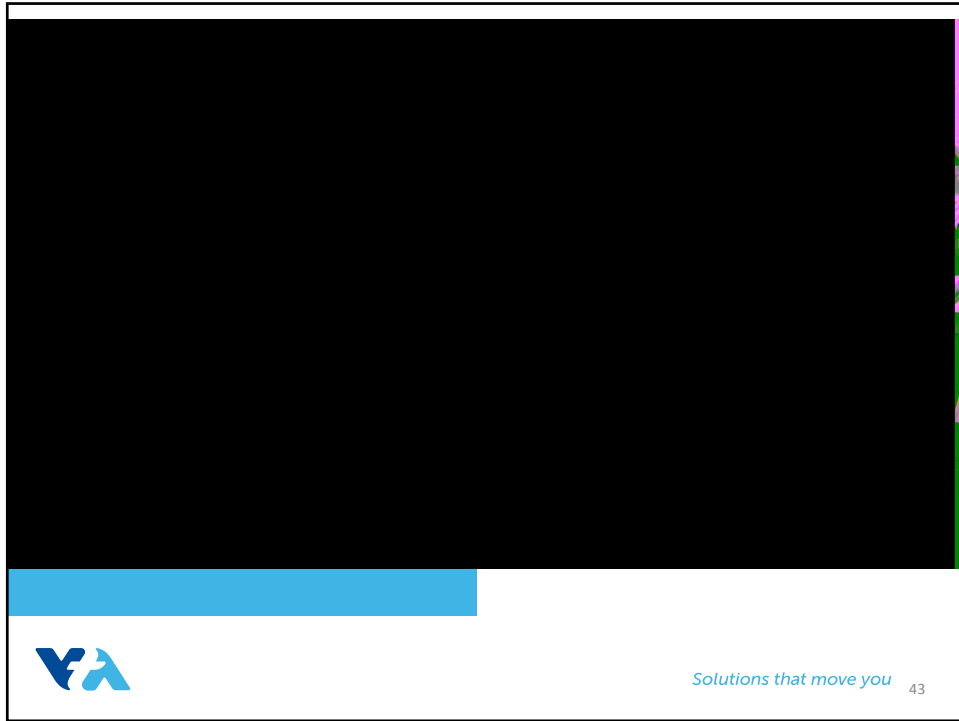
## Measuring Success

**Santa Clara Valley Transportation Authority**  
**Laying the Foundation for Economic Growth:**

FOUR DECADES OF TRANSPORTATION  
INVESTMENT IN SANTA CLARA COUNTY

**1976-2016**





# Project Updates

Leyla Hedayat, VTA



45

## Phase II Planning/Engineering Technical Studies Update

### Single-Bore Tunnel Technical Study

- Key areas of focus:
  - Tunnel profile: diameter, depth, and alignment
  - Station configuration
  - Emergency egress and response
  - Ventilation
- Topic specific workshops conducted with BART in January to review prepared concepts and receive input and feedback
- Draft report anticipated February 2017
- Study completion anticipated March/ April 2017



Solutions that move you 46



## Phase II Planning/Engineering Technical Studies Update

### Independent Risk Assessment of Tunneling Alternatives

- Assessment to evaluate risks associated with tunneling alternatives, including:
  - Interviews with technical experts and stakeholders
  - Qualitative & quantitative assessment
  - Risk report
- Proposals received in early January and are under evaluation by a joint VTA/BART review panel.
- Study anticipated to be completed in the Summer 2017




## VTA's Process for Recommendation

Leyla Hedayat, VTA






Considerations for Station Locations	
Construction Impacts	<ul style="list-style-type: none"> <li>• Impacts to existing infrastructure and sub-surface easements</li> <li>• Impacts to businesses, institutions and key destinations</li> <li>• Impacts to existing utilities</li> </ul>
Connectivity	<ul style="list-style-type: none"> <li>• Connections to other transit modes</li> <li>• Connections to key activity centers</li> <li>• Station access</li> </ul>
Long-term Economic Development	<ul style="list-style-type: none"> <li>• Compatibility with City's long-range plans</li> <li>• Compatibility to timing of area development</li> <li>• Transit Oriented Joint Development</li> </ul>
Ridership	<ul style="list-style-type: none"> <li>• Increases/decreases due to station location</li> </ul>
Cost	<ul style="list-style-type: none"> <li>• Overall magnitude of cost due to impacts to existing infrastructure, sub-surface easements, construction staging areas, engineering, etc.</li> </ul>
Right of Way	<ul style="list-style-type: none"> <li>• Availability of "right" ROW for entrance and construction staging</li> <li>• Impacts to historic resources</li> </ul>
Alignment	<ul style="list-style-type: none"> <li>• Optimization of horizontal and vertical alignments</li> </ul>



Solutions that move you 49

Considerations for Tunneling Methodology	
Constructability	<ul style="list-style-type: none"> <li>• Risk profile</li> <li>• Complexity</li> <li>• Staging requirements</li> <li>• Impacts to existing infrastructure</li> </ul>
Environmental	<ul style="list-style-type: none"> <li>• Construction impacts</li> <li>• Impacts to ground surface activities and circulation, e.g. vehicle, bike/ped and transit detours</li> <li>• Impacts to historic resources</li> </ul>
System Operations	<ul style="list-style-type: none"> <li>• Routine operations and maintenance</li> <li>• Ventilation systems</li> </ul>
Long-term Economic Development	<ul style="list-style-type: none"> <li>• Impacts to businesses, institutions and key destinations</li> <li>• Transit Oriented Joint Development</li> </ul>
Cost	<ul style="list-style-type: none"> <li>• Overall magnitude of cost due to impacts to existing infrastructure, sub-surface easements, construction staging areas, construction elements, utility relocations, engineering, etc.</li> </ul>




Solutions that move you 50

Station Location Options Decision Making Milestones	Date
City of San Jose Staff Recommendation	February 2017
San Jose Transportation Study Session	March 2017
San Jose City Council Approval of Staff Recommendation	April 2017
VTA Staff Recommendation	Summer 2017
VTA's BART Silicon Valley Program Ad Hoc Committee	August 2017
VTA Board of Directors Approval	Sept. 2017


Tunneling Methodology Options Decision Making Milestones	Date
VTA Staff Recommendation	Summer 2017
VTA's BART Silicon Valley Program Ad Hoc Committee	August 2017
VTA Board of Directors Approval	Sept. 2017



*Solutions that move you* 51

# City of San Jose's Process for Recommendation

John Ristow, City of San Jose



*Solutions that move you* 52

### City of San Jose's Process for Recommendation

San Jose's Station Location Recommendation Process	Date
San Jose Transportation and Environment Committee	March 6,2017
San Jose City Council Study Session	March 30, 2017
San Jose City Council Action on Project Preferences	Will be discussed at CWG meeting



## Diridon Transportation Facilities Master Plan Update

Jill Gibson, VTA



# Diridon Transportation Facilities Master Plan Update

Community Working Group  
February 2017



## Project Goals



### Transportation Performance

- A station that works
- A plan that fits
- Flexible, adaptable concepts



### Passenger Experience

- Convenient, comfortable
- energetic, inspiring



### A Good Neighbor & Civic Gateway

- Compatible with existing neighborhoods and future development
- Respect an historic setting
- A new landmark

## Primary Activities: Master Plan Study

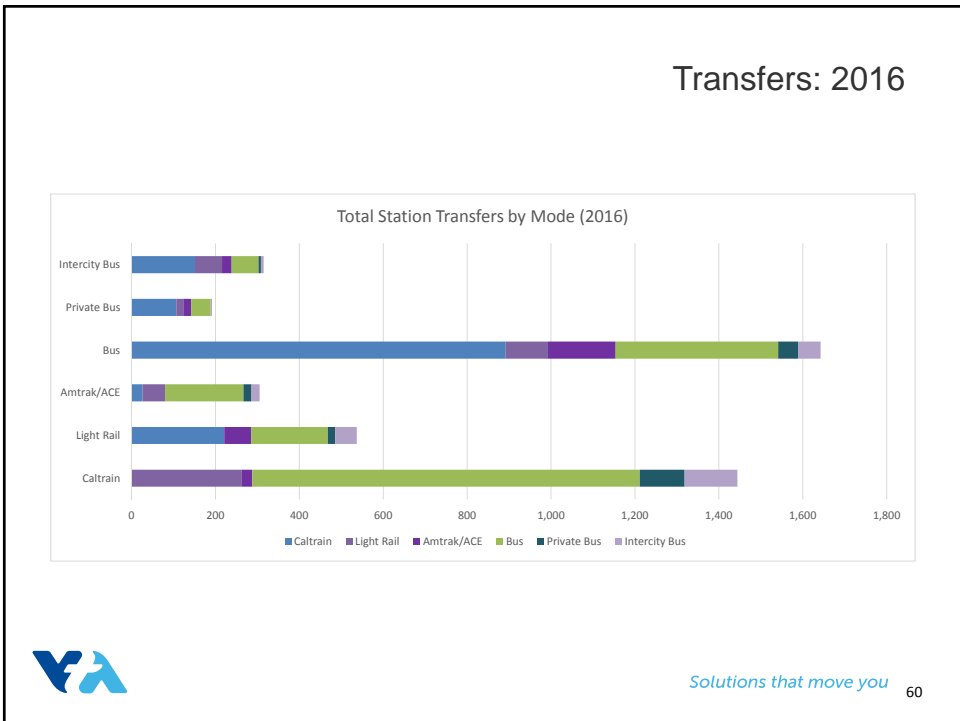
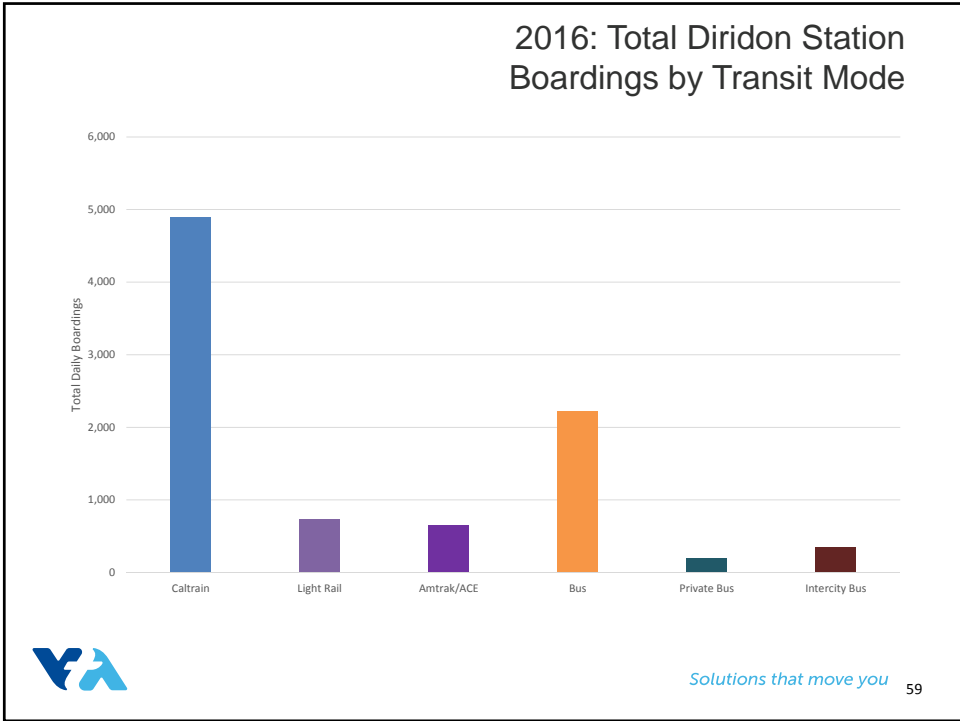
Define Functional Needs	Develop Alternatives	Evaluate the Alternatives
<ul style="list-style-type: none"> <li>Functional Space Needs</li> <li>Multi-Modal Connections</li> <li>Access Requirements</li> </ul>	<ul style="list-style-type: none"> <li>Fit the required program elements to the site</li> <li>Accommodate wide range of outcomes</li> </ul>	<ul style="list-style-type: none"> <li>Develop transparent, measureable criteria</li> <li>Determine strengths and weaknesses</li> </ul>

57

### Define Functional Needs Thoroughly *Horizon Year 2040*

- **Multi-Modal Service Needs:** ridership, service plans, mode of access, intermodal transfers, vehicular volumes, future forecasts
- **Space Programming:** Passenger Services, Back of the House, Ticketing, Police, Access Facilities, Retail, Passenger Loading
- **Access Study:** auto, bicycle, pedestrian, drop off/pick up, shuttles, special event circulation paths





## Diridon Station Facilities Master Plan

Facilities Program Database

Functional Categories	Building Infrastruct	Passenger Services	Station Managmnt	Transit Operations	Police	Retail	Parking	Curbside Space	Bicycle Facilities
Sub-categories	Electrical	Information Desk(s)	Loading / Trash	Baggage Handling	Police Post(s)	By Category	Car Share	Employee Shuttles	Bicycle Storage
	HVAC	Lost & Found	Maintenance & Cleaning	Maintenance (BOH)	Police Substation		Electric Car Charging Stations	Private Autos	Bike Station
	Plumbing and Fire Protection	Seated Waiting Areas	Storage	Management (BOH)			Joint Development Parking	Taxi/Rideshare	
		Standing Waiting Areas	Terminal Administration	Operator Support (BOH)			Replacement Parking		
		Toilets		Staffed Ticketing			Short-Term Parking		
				Ticket Vending Machines (TVM)			Transit Parking ("Park & Ride")		
				Ticketing & Accounting Support (BOH)					

1<sup>st</sup> December 2016  
61

## Diridon Station Facilities Master Plan

Facilities Program Database

Transit Categories	Commuter Rail	Light Rail	Intercity Rail	Heavy Rail	Transit Bus	Motorcoach	Shuttles	Auto Parking	Bicycle
Transit Providers	Altamont Corridor Express (ACE)	Valley Transportation Authority (VTA)	Amtrak Capital Corridor	Bay Area Rapid Transit (BART)	Amtrak Rapid Transit Thruway Bus	Amtrak Thruway Bus	Adobe Apple	Carshare Taxi	Bay Area Bike Share
	Caltrain		Amtrak Starlight		Caltrain Weekend Shuttle	BoltBus California Shuttle	eBay/Paypal Google		
			California High Speed Rail (CAHSR)		Monterey-Salinas Transit (MST)	Greyhound Megabus	San Jose Water		
					Santa Cruz METRO				
					VTA Bus				
					VTA DASH				

1<sup>st</sup> December 2016  
62

## Alternatives Analysis

- Develop Screening Criteria
- Develop Transportation Facility and Access Alternatives
- Evaluate Alternatives
- Refine Final Alternative(s)



## Objective and Transparent Screening Criteria Examples

- Performance
  - Transit Operations
  - Implementation
- Passenger Experience
  - Pedestrian Connections
  - Passenger Amenities
  - Neighborhood Connectivity
- Urban Integration
  - Adjacent Impacts
  - Community integration
  - Traffic Impacts
  - Historic Station/District Impacts



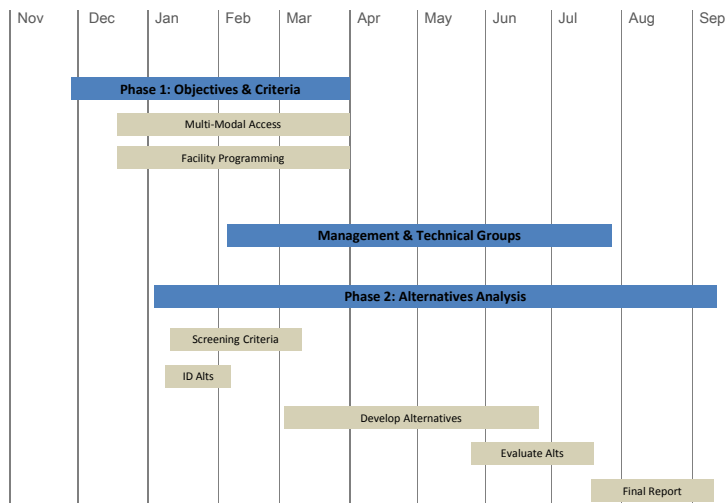


## Technical Guidance

- Transit operators and City engaged on a monthly basis.
- Provided data, service plans, facility and operational needs, and technical criteria.
- Ensure that the facility design will function properly, and is integrated with current and future plans.
- Review, identify, and resolve conflicts among technical requirements.



## Overview Schedule



# Questions?



67

# Draft SEIS/SEIR Public Circulation Update

Tom Fitzwater, VTA



68

## Draft SEIS/SEIR Public Circulation Update

### Summary of Public Hearings

- 1/25 Mexican Heritage Plaza - 44 attendees, 5 speakers
- 1/26 Santa Clara Senior Center - 38 attendees, 2 speakers
- 1/30 San Jose City Hall - 90 attendees, 15 speakers

### Comments Received as of 2/6

- Governmental Agencies - CA Transportation Commission
- Public - 19 individuals

Comment Period Ends 2/20



*Solutions that move you* 69

# Next Steps

Eileen Goodwin, Facilitator



## Next Steps

- Next CWG meeting: Tuesday, April 4, 2017 ~ 4:00-6:00 PM, San Jose/SV Chamber of Commerce ~ BYOB
  - Discussion of Fare Setting Process for BART Phase I Project (BART & VTA to present)
  - Measure B/Financial Update
  - Environmental Update
  - Single-Bore Technical Study Summary
  - Twin-Bore and Single-Bore Independent Risk Assessment Update
- Parking Validation
- Action Items

