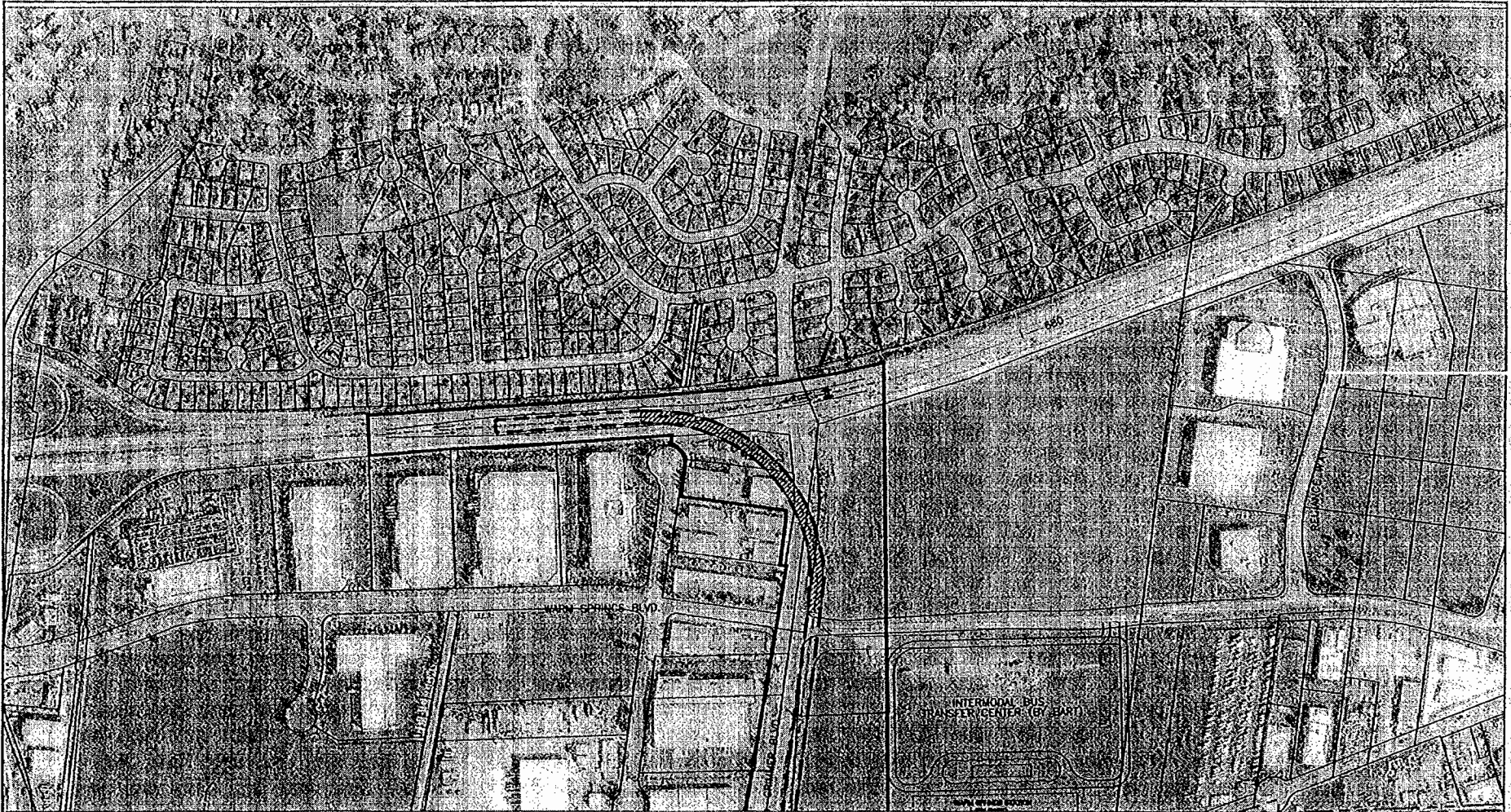
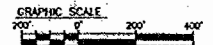


## **APPENDIX E: AREAS OF POTENTIAL EFFECT MAPS**



PLAN

HISTORIC ARCHITECTURAL APE = \_\_\_\_\_  
 ARCHEOLOGICAL APE = \_\_\_\_\_



H:\GIS\BART\GIS\MapDocs\MapDocs\BART\BART\APES\APE1.dwg 3/27/02 08:18:17 PM

| REV | DATE | BY | CHKD | APP | DESCRIPTION |
|-----|------|----|------|-----|-------------|
|     |      |    |      |     |             |
|     |      |    |      |     |             |
|     |      |    |      |     |             |
|     |      |    |      |     |             |

|                        |                                      |   |
|------------------------|--------------------------------------|---|
| DESIGNED BY<br>R. PARK | APPROVED FOR<br>CIE PURPOSES<br>FOR: | <br>A DIVISION OF INTERSTATE 410 COMPANY<br>2101 Webster St., Suite 1000<br>Oakland, CA 94612<br>Phone: (510) 419-6000<br>Fax: (510) 419-5155 |
| DRAWN BY<br>R. PARK    | DATE                                 |   |
| CHECKED BY             | VIA                                  |   |
| DATE                   | SUBMITTED                            |   |

**EARTH SYSTEMS**

A DIVISION OF INTERSTATE 410 COMPANY  
 2101 Webster St., Suite 1000  
 Oakland, CA 94612  
 Phone: (510) 419-6000  
 Fax: (510) 419-5155

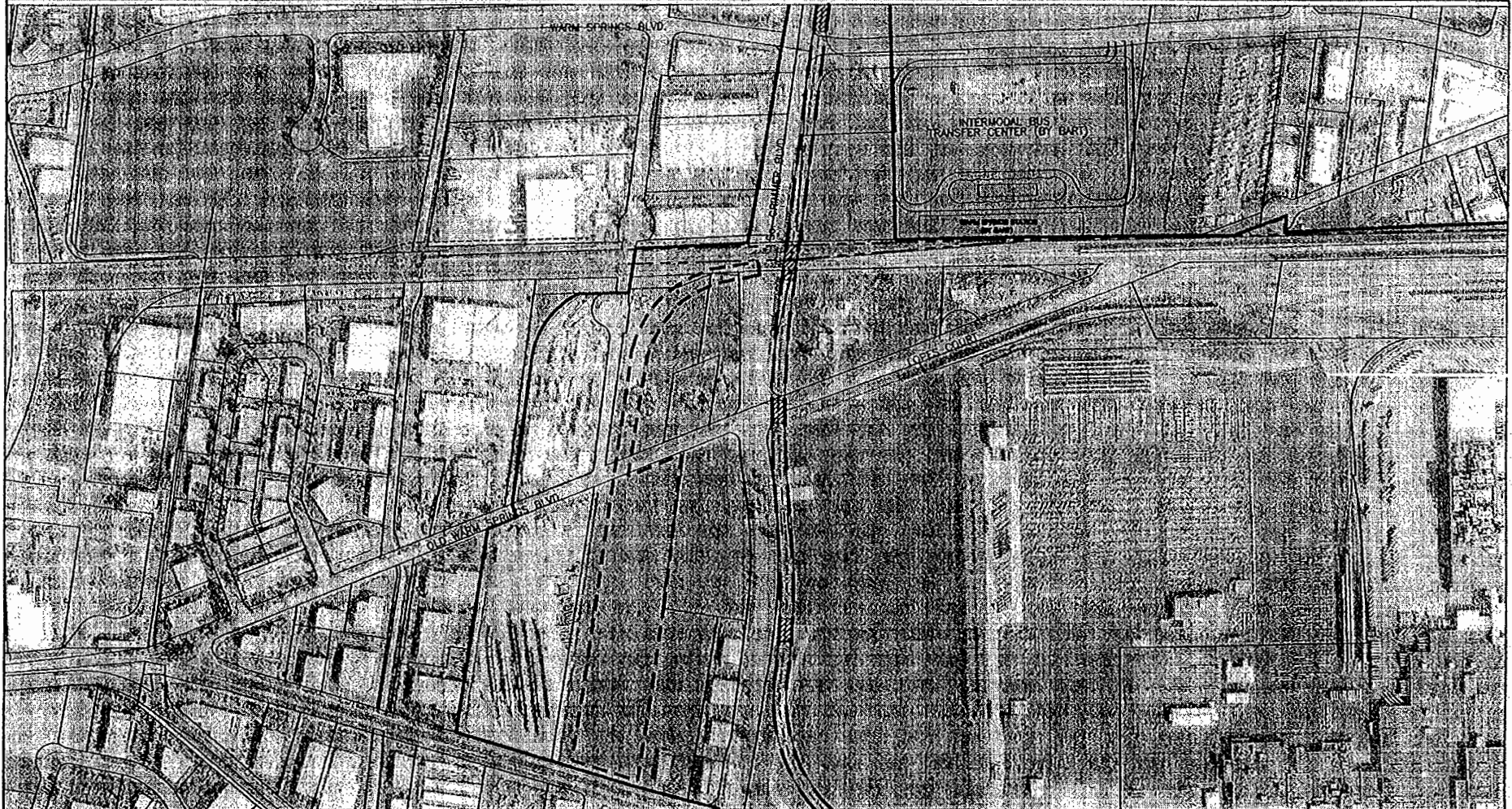
**VTA** VALLEY TRANSPORTATION AUTHORITY

**SILICON VALLEY RAPID TRANSIT CORRIDOR**



BART -- BASELINE ALTERNATIVE  
 AREA OF POTENTIAL EFFECT  
 RIGHT-OF-WAY PLAN  
 SHEET 1

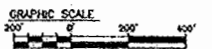
|               |           |
|---------------|-----------|
| GRID DATE     | 20NO02    |
| SCALE         | 1"=200'   |
| GRID FILE NO. | APED1.DWG |
| DWG NO.       | APER1     |
| REV           |           |
| PRICE         |           |

FIGURE E-1



PLAN

HISTORIC ARCHITECTURAL APE =   
 ARCHEOLOGICAL APE = 



| REV. | DATE | BY | APP. | DESCRIPTION |
|------|------|----|------|-------------|
|      |      |    |      |             |
|      |      |    |      |             |
|      |      |    |      |             |

DESIGNED BY  
R. PARK

DRAWN BY  
R. PARK

CHECKED BY

APPROVED BY

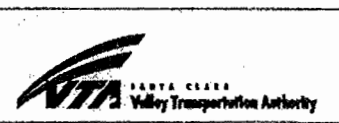
DATE

SUBMITTED

**EARTH SYSTEM**

A DYNCO INTERNATIONAL LTD. COMPANY

2101 Webster St., Suite 1000  
 Oakland, CA 94612  
 Phone: (510) 419-6500  
 Fax: (510) 419-5155



**SILICON VALLEY RAPID TRANSIT CORRIDOR**



BART - BASELINE ALTERNATIVE  
 AREA OF POTENTIAL EFFECT  
 RIGHT-OF-WAY PLAN  
 SHEET 2

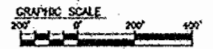
GRID DATE: 2/01/02  
 SCALE: 1"=200'  
 GRID FILE NO.: APEB2.DWG  
 DATE PLOTTED: APEB2

FIGURE E-2



PLAN

HISTORIC ARCHITECTURAL APE ::   
 ARCHEOLOGICAL APE :: 



| REV | DATE | BY | CHK | APP | DESCRIPTION |
|-----|------|----|-----|-----|-------------|
|     |      |    |     |     |             |
|     |      |    |     |     |             |
|     |      |    |     |     |             |

|                        |                                      |
|------------------------|--------------------------------------|
| DESIGNED BY<br>R. PARK | APPROVED FOR<br>C/A PURPOSES<br>FOR: |
| DRAWN BY<br>R. PARK    |                                      |
| APPROVED BY            | VTA DATE                             |
| DATE                   | SUBMITTED                            |

**EARTH SYSTEMS**  
 A GEACO INTERNATIONAL LTD. COMPANY  
 2101 Webster St., Suite 1000  
 Oakland, CA 94612  
 Phone: (510) 419-6000  
 Fax: (510) 419-5355



**SILICON VALLEY RAPID TRANSIT CORRIDOR**  
 BART - BASELINE ALTERNATIVE  
 AREA OF POTENTIAL EFFECT  
 RIGHT-OF-WAY PLAN  
 SHEET 3

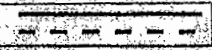
|                      |                             |
|----------------------|-----------------------------|
| GRID DATE<br>20/0002 | GRID FILE NO.<br>A/PEB3.DWG |
| SCALE<br>1"=200'     | DWG NO.<br>APEB3            |
|                      | REV PAGE NO.                |

FIGURE E-3



PLAN

HISTORIC ARCHITECTURE APE  
 ARCHEOLOGICAL APE



| REV | DATE | BY | CHK | APP | DESCRIPTION |
|-----|------|----|-----|-----|-------------|
|     |      |    |     |     |             |
|     |      |    |     |     |             |
|     |      |    |     |     |             |
|     |      |    |     |     |             |

|                        |                                     |
|------------------------|-------------------------------------|
| DESIGNED BY<br>R. PARK | APPROVED FOR<br>EA PURPOSES<br>FOR: |
| DRAWN BY<br>R. PARK    | VIA DATE                            |
| CHECKED BY             | SUBMITTED                           |
| DATE                   |                                     |



2101 Webster St., Suite 1000  
 Oakland, CA 94612  
 Phone: (510) 415-4000  
 Fax: (510) 415-5155

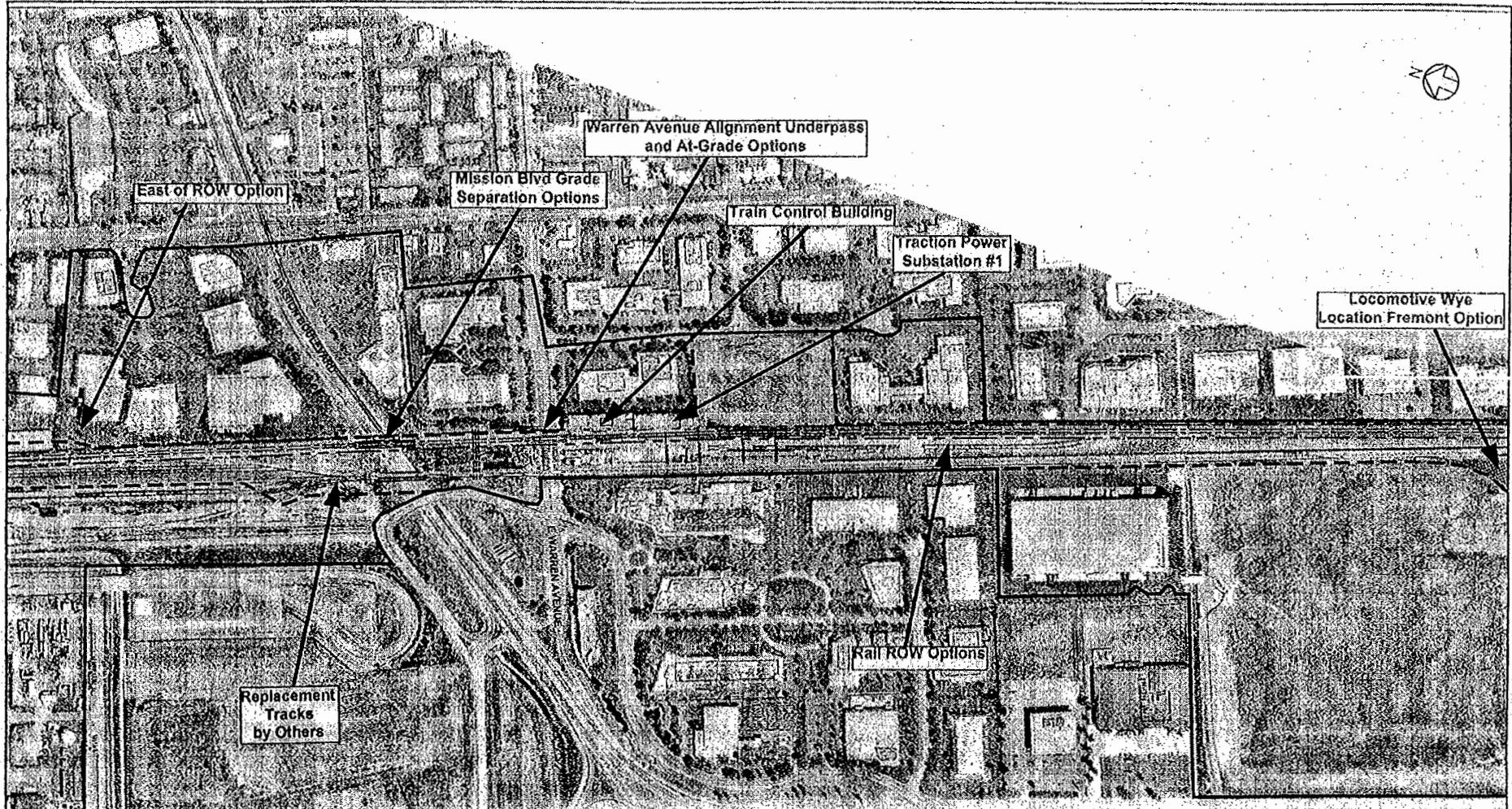


SILICON VALLEY RAPID TRANSIT CORRIDOR  
 BART - BASELINE ALTERNATIVE  
 AREA OF POTENTIAL EFFECT  
 RIGHT-OF-WAY PLAN  
 SHEET 4

|              |           |
|--------------|-----------|
| CDR BAR      | 26NOV02   |
| SCALE        | 1"=200'   |
| CDR FILE NO. | APEB4.DWG |
| DWG NO.      | APEB4     |
| REV          |           |
|              |           |

FIGURE E-4





PLAN

HISTORIC ARCHITECTURAL APE =   
 ARCHEOLOGICAL APE =



| REV. | DATE | BY | APP. | DESCRIPTION |
|------|------|----|------|-------------|
|      |      |    |      |             |
|      |      |    |      |             |
|      |      |    |      |             |

|                        |                                |
|------------------------|--------------------------------|
| DESIGNED BY<br>R. PARK | APPROVED FOR THE PURPOSES FOR: |
| DRAWN BY<br>R. PARK    |                                |
| CHECKED BY             |                                |
| DATE                   | VIA DATE                       |
|                        | SUBMITTED                      |

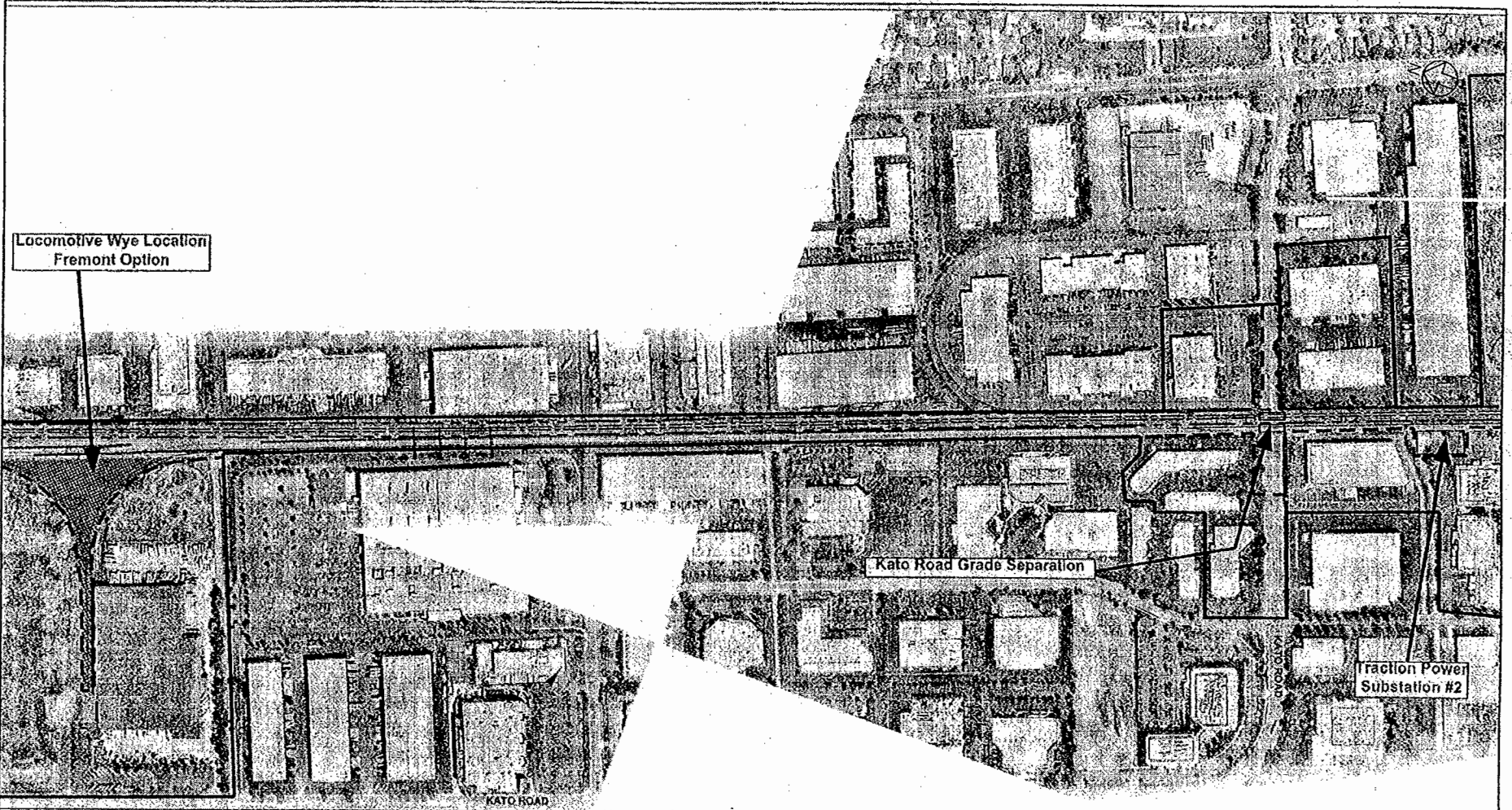
**EARTH SYSTEM**  
 A SPACE INTERNATIONAL LTD COMPANY  
 2101 Webster St., Suite 1000  
 Oakland, CA 94612  
 Phone: (510) 419-6000  
 Fax: (510) 419-5355

**SILICON VALLEY RAPID TRANSIT CORRIDOR**  
 BART - BUILD ALTERNATIVE  
 AREA OF POTENTIAL EFFECT  
 RIGHT-OF-WAY PLAN  
 SHEET 2

|               |           |
|---------------|-----------|
| GRID DATE     | 10SE02    |
| SCALE         | 1"=200'   |
| GRID FILE NO. | APED2.DWG |
| DWG NO.       | APED2     |
| REV           |           |
| PRICE NO.     |           |

C:\Documents and Settings\SPARK\My Documents\APED2.dwg 11/14/02 11:29:45 AM

FIGURE E-6



C:\Documents and Settings\jg2001\My Documents\jg2001\APE03.dwg, 12/26/2008 04:11:13 AM

PLAN

HISTORIC ARCHITECTURAL APE =   
 ARCHEOLOGICAL APE =

GRAPHIC SCALE  
 0' 200' 400'

|     |      |    |      |             |
|-----|------|----|------|-------------|
| NO. | REV. | BY | DATE | DESCRIPTION |
|     |      |    |      |             |
|     |      |    |      |             |
|     |      |    |      |             |
|     |      |    |      |             |

|                        |                                      |
|------------------------|--------------------------------------|
| DESIGNED BY<br>R. PARK | APPROVED FOR<br>DR. PURPOSES<br>FOR: |
| DRAWN BY<br>R. PARK    | VIA                                  |
| CHECKED BY             | DATE                                 |
| APPROVED BY            | SUBMITTED                            |
| DATE                   |                                      |

**EARTH TECH**  
 A DEXTER INTERNATIONAL LTD. COMPANY  
 2101 Webster St., Suite 1000  
 Oakland, CA 94612  
 Phone: (510) 419-6000  
 Fax: (510) 419-5335



**SILICON VALLEY RAPID TRANSIT CORRIDOR**  
 BART - BUILD ALTERNATIVE  
 AREA OF POTENTIAL EFFECT  
 RIGHT-OF-WAY PLAN  
 SHEET 3

|                         |
|-------------------------|
| DATE<br>10SE02          |
| SCALE<br>1"=200'        |
| DATE FILED<br>APE03.DWG |
| APE03                   |

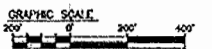
FIGURE E-7





PLAN

HISTORIC ARCHITECTURAL APE =   
 ARCHEOLOGICAL APE =



| REV | DATE | BY | CHK | APP | DESCRIPTION |
|-----|------|----|-----|-----|-------------|
|     |      |    |     |     |             |
|     |      |    |     |     |             |
|     |      |    |     |     |             |
|     |      |    |     |     |             |

DESIGNED BY  
R. PARK

APPROVED FOR  
DR. KIBBOLES FOR:  
R. PARK

DRAWN BY

APPROVED BY

DATE

SUBMITTED

**EARTH TECH**

A EPCOR INTERNATIONAL LTD. COMPANY

2101 Webster St., Suite 1000  
 Oakland, CA 94612  
 Phone: (510) 419-6000  
 Fax: (510) 419-5355



**SILICON VALLEY RAPID TRANSIT CORRIDOR**

BART -- BUILD ALTERNATIVE  
 AREA OF POTENTIAL EFFECT  
 RIGHT-OF-WAY PLAN  
 SHEET 4

GRID DATE  
10/5/02

SCALE  
1"=200'

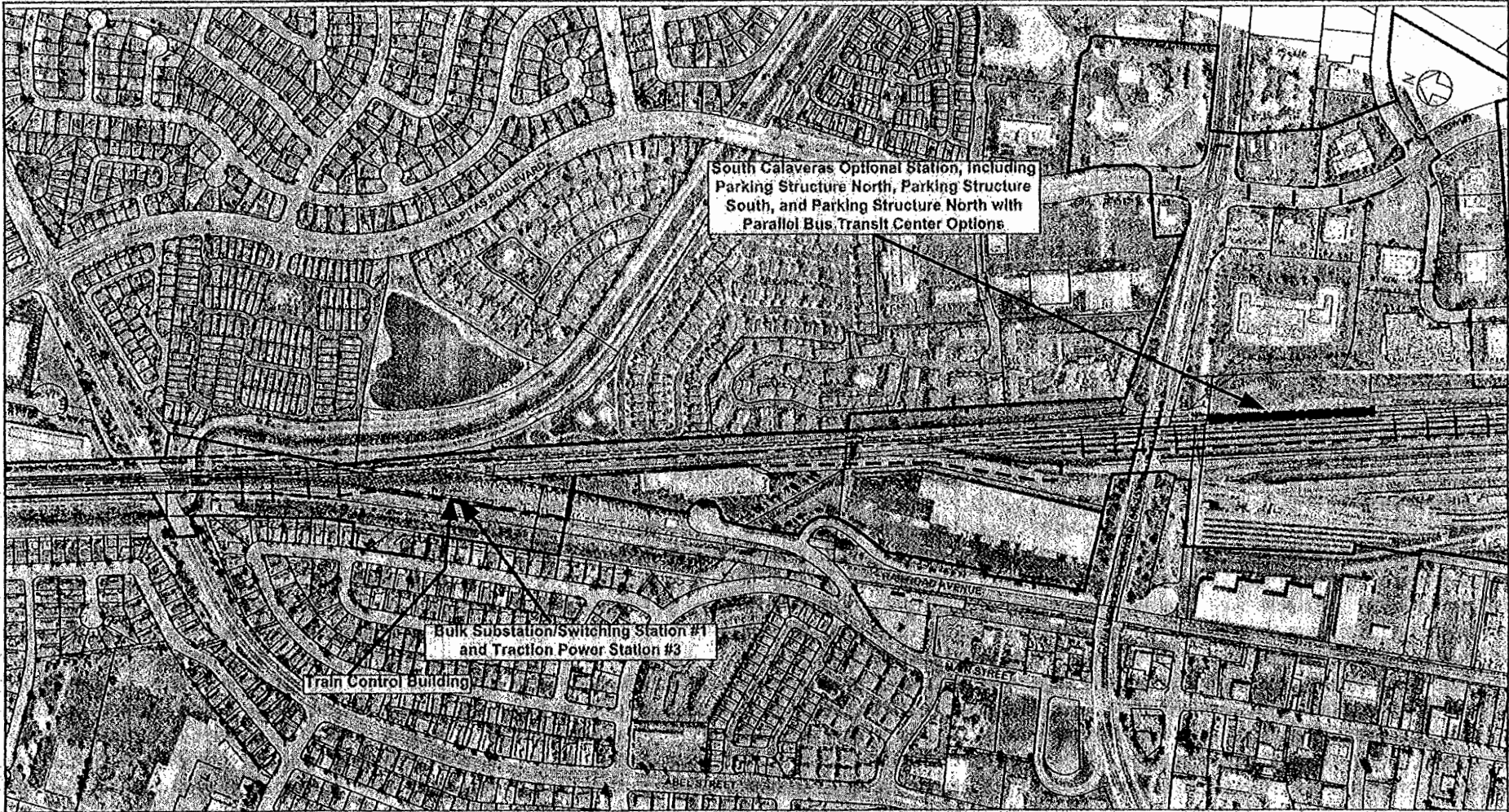
GRID FILE NO.  
APE04.DWG

DWG NO.  
APE04

REV

DATE

FIGURE E-8



PLAN

HISTORIC ARCHITECTURAL APE =   
 ARCHEOLOGICAL APE = 

GRAPHIC SCALE  
 0' 200' 400'

| NO. | DATE | BY | APP. | DESCRIPTION |
|-----|------|----|------|-------------|
|     |      |    |      |             |
|     |      |    |      |             |
|     |      |    |      |             |
|     |      |    |      |             |

DESIGNED BY  
R. PARK

DRAWN BY  
R. PARK

CHECKED BY

APPROVED BY

DATE

VIA

DATE

SUBMITTED

**EARTH SYSTEMS**

A BURNS & MCDONNELL COMPANY

2101 Webster St., Suite 1000  
 Oakland, CA 94612  
 Phone: (510) 419-6000  
 Fax: (510) 419-3355



**SILICON VALLEY RAPID TRANSIT CORRIDOR**

BART - BUILD ALTERNATIVE  
 AREA OF POTENTIAL EFFECT  
 RIGHT-OF-WAY PLAN  
 SHEET 5

CAD DATE  
10SE02

SCALE  
1"=200'

CAD FILE NO.  
APE05.DWG

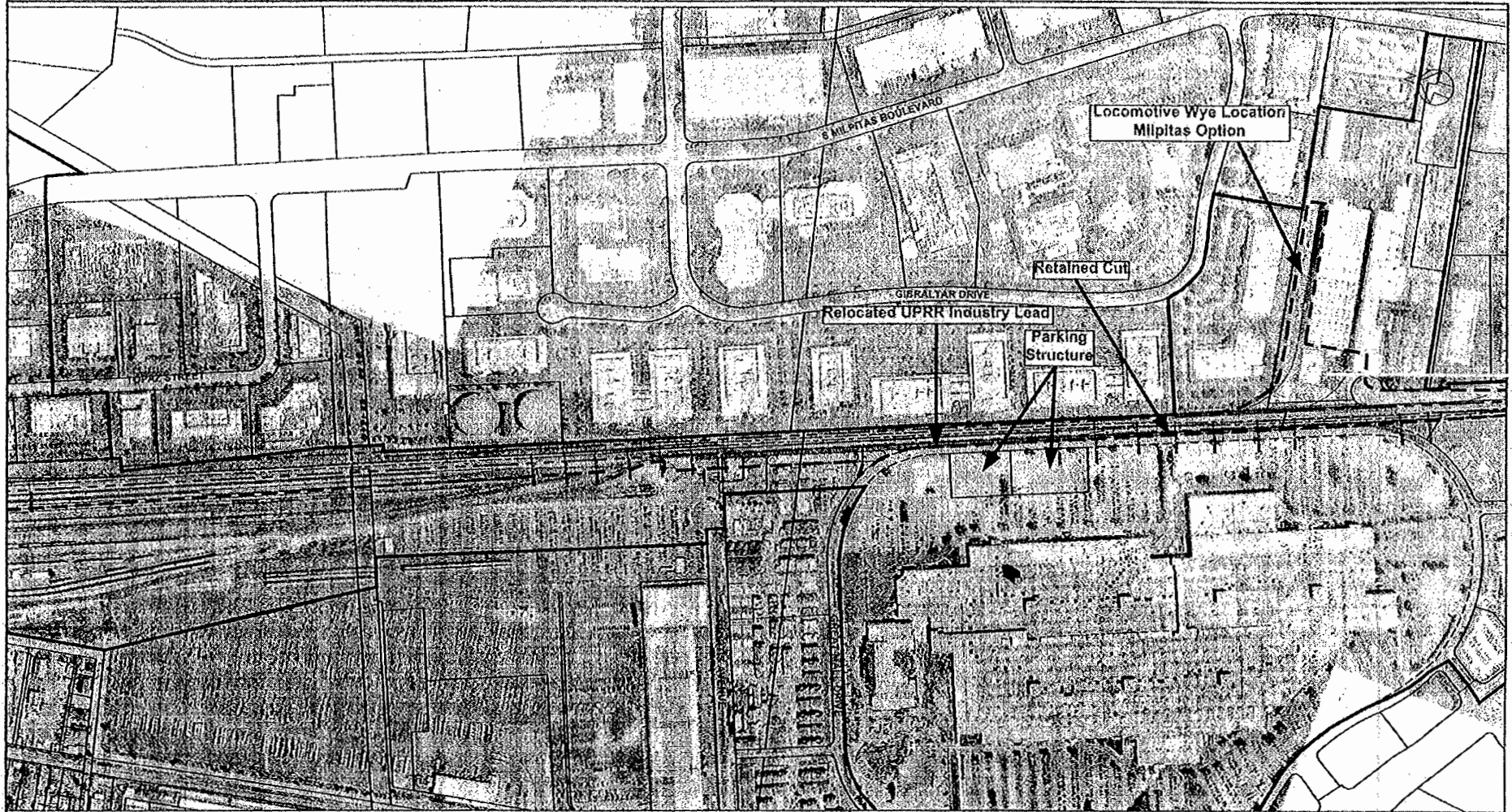
DWG NO.  
APE05

REV

PAGE NO.

C:\Users\jpark\Documents\BART\APE05.dwg 10/21/02 10:13:45 AM

FIGURE E-9



PLAN

HISTORIC ARCHITECTURAL APE =   
 ARCHEOLOGICAL APE =

GRAPHIC SCALE  
 0' 200' 400'

| REV | DATE | BY | CHKD | APP | DESCRIPTION |
|-----|------|----|------|-----|-------------|
|     |      |    |      |     |             |
|     |      |    |      |     |             |
|     |      |    |      |     |             |
|     |      |    |      |     |             |

DESIGNED BY  
R. PARK

DRAWN BY  
R. PARK

CHECKED BY

APPROVED BY

DATE

VIA DATE

SUBMITTED

**EARTH SYSTEMS**

A TRIPCO ACQUISITION US COMPANY

3101 Webster St., Suite 1000  
 Oakland, CA 94612  
 Phone: (510) 419-6000  
 Fax: (510) 419-5355

**VTA** SANTA CLARA  
 Valley Transportation Authority

**SILICON VALLEY RAPID TRANSIT CORRIDOR**

BART -- BUILD ALTERNATIVE  
 AREA OF POTENTIAL EFFECT  
 RIGHT-OF-WAY PLAN  
 SHEET 6

JOB NO. 105E02

SCALE 1"=200'

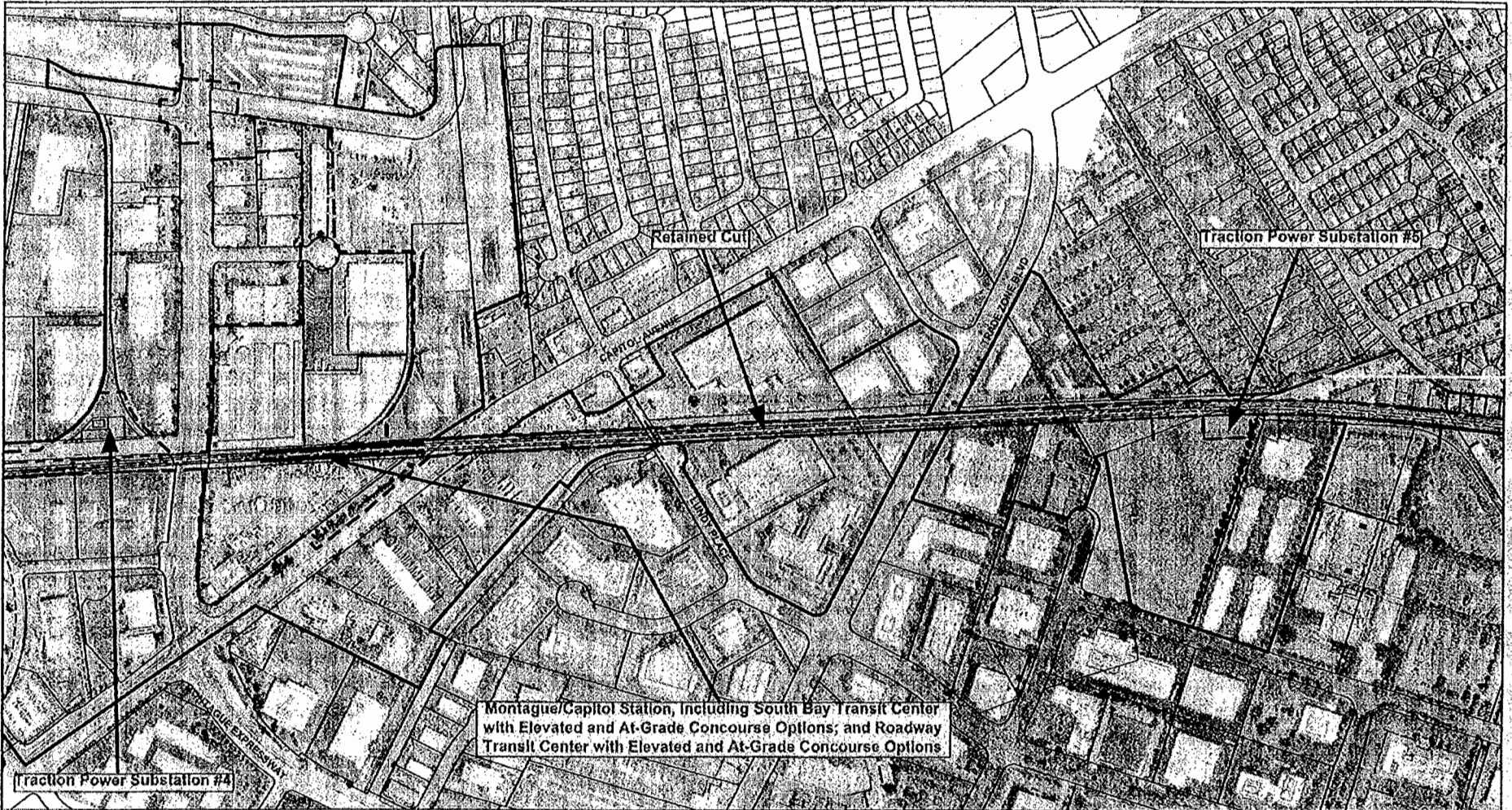
JOB FILE NO. APE05.DWG

DWG NO. APE06

REV. NO. 00

DATE

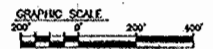
FIGURE E-10



H:\BART\PROJECTS\APES\APE7\9455\AP7\MARKET-AP7-24\27\FBDE-01051818.dwg

PLAN

HISTORIC ARCHITECTURAL APE # \_\_\_\_\_  
 ARCHEOLOGICAL APE # \_\_\_\_\_



| REV. | DATE | BY | CHKD | APP | DESCRIPTION |
|------|------|----|------|-----|-------------|
|      |      |    |      |     |             |
|      |      |    |      |     |             |
|      |      |    |      |     |             |
|      |      |    |      |     |             |

|                        |                                     |
|------------------------|-------------------------------------|
| DESIGNED BY<br>R. PARK | APPROVED FOR<br>OR PURPOSES<br>FOR: |
| DRAWN BY<br>R. PARK    | VIA _____ DATE _____                |
| APPROVED BY _____      | SUBMITTED _____                     |
| DATE _____             |                                     |

**EARTH TECH**  
 A GYDRO INTERNATIONAL LTD. COMPANY  
 2101 Webster St., Suite 1000  
 Oakland, CA 94612  
 Phone: (510) 419-6000  
 Fax: (510) 419-5155

**VTA** SANTA CLARA  
 Valley Transportation Authority

**SILICON VALLEY RAPID TRANSIT CORRIDOR**  
 BART -- BUILD ALTERNATIVE  
 AREA OF POTENTIAL EFFECT  
 RIGHT-OF-WAY PLAN  
 SHEET 7

|                            |     |      |
|----------------------------|-----|------|
| CADD SITE<br>10SE02        | REV | DATE |
| SCALE<br>1"=200'           |     |      |
| CADD FILE NO.<br>APE07.DWG |     |      |
| DWG NO.<br>APE07           |     |      |

FIGURE E-11