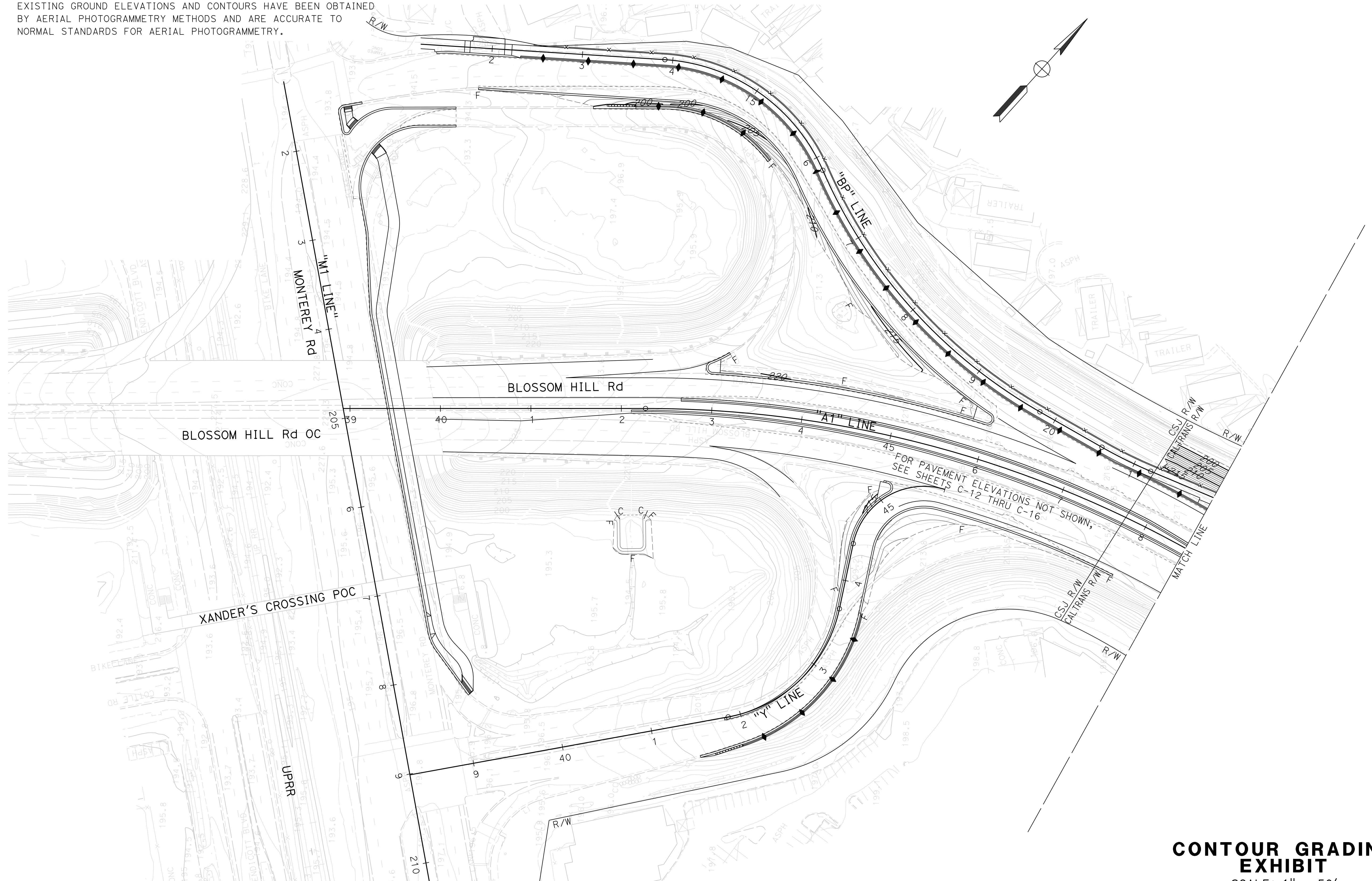
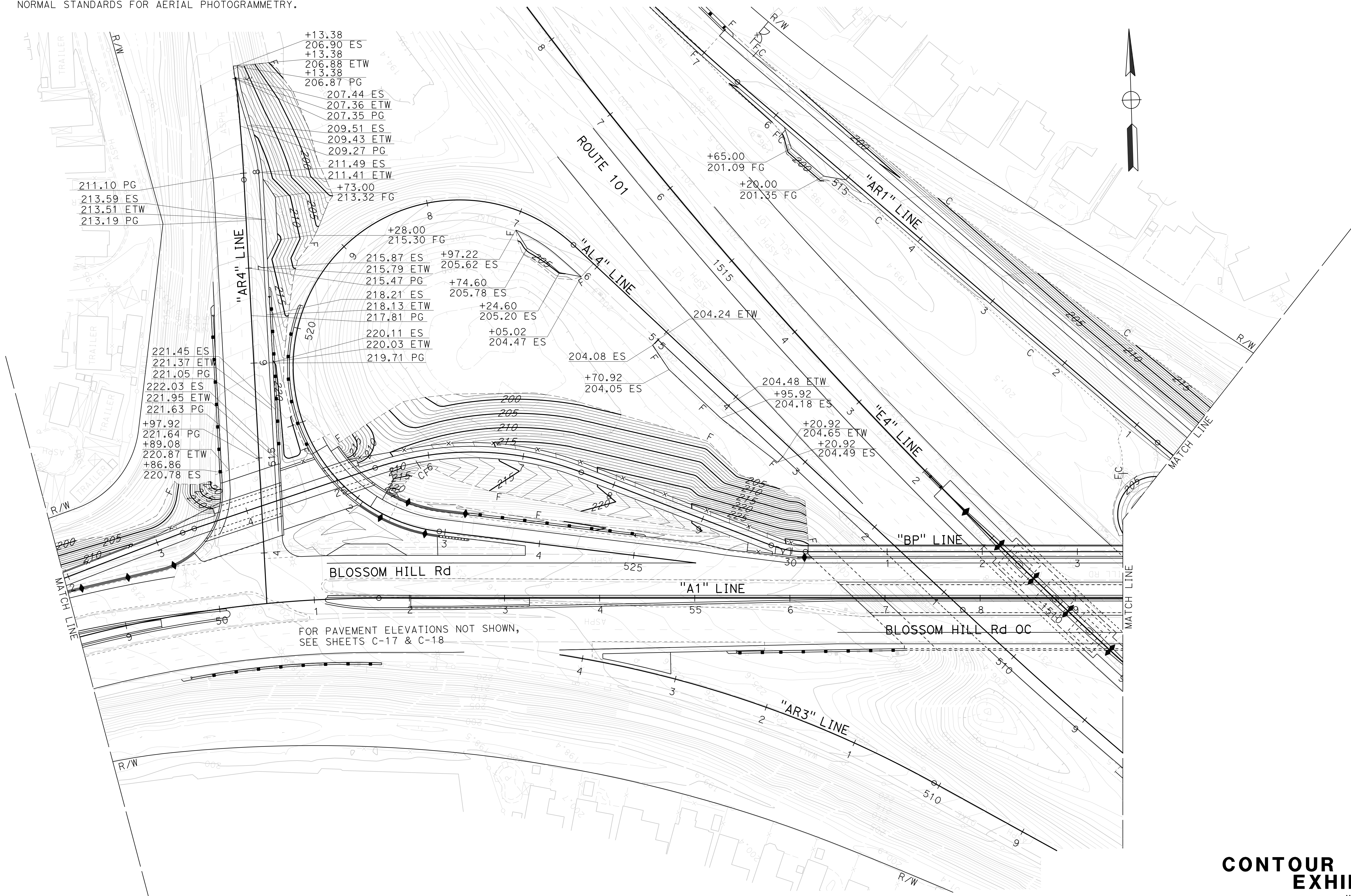


NOTE: THIS CONTOUR GRADING EXHIBIT IS PROVIDED FOR INFORMATION. EXISTING GROUND ELEVATIONS AND CONTOURS HAVE BEEN OBTAINED BY AERIAL PHOTOGRAMMETRY METHODS AND ARE ACCURATE TO NORMAL STANDARDS FOR AERIAL PHOTOGRAMMETRY.



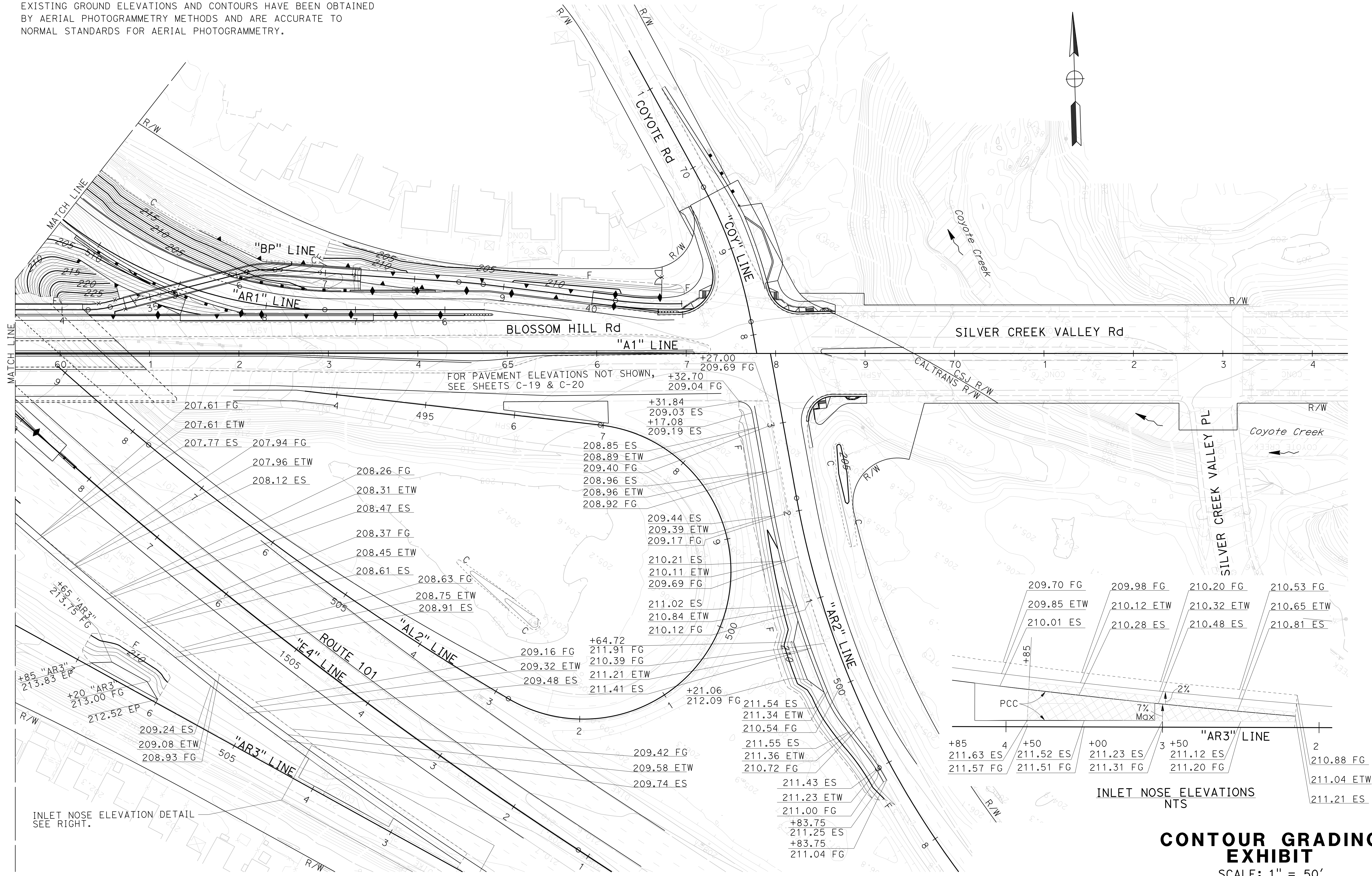
FOR PAVEMENT ELEVATIONS NOT SHOWN,  
SEE SHEETS C-12 THRU C-16

NOTE: THIS CONTOUR GRADING EXHIBIT IS PROVIDED FOR INFORMATION.  
 EXISTING GROUND ELEVATIONS AND CONTOURS HAVE BEEN OBTAINED  
 BY AERIAL PHOTOGRAMMETRY METHODS AND ARE ACCURATE TO  
 NORMAL STANDARDS FOR AERIAL PHOTOGRAMMETRY.

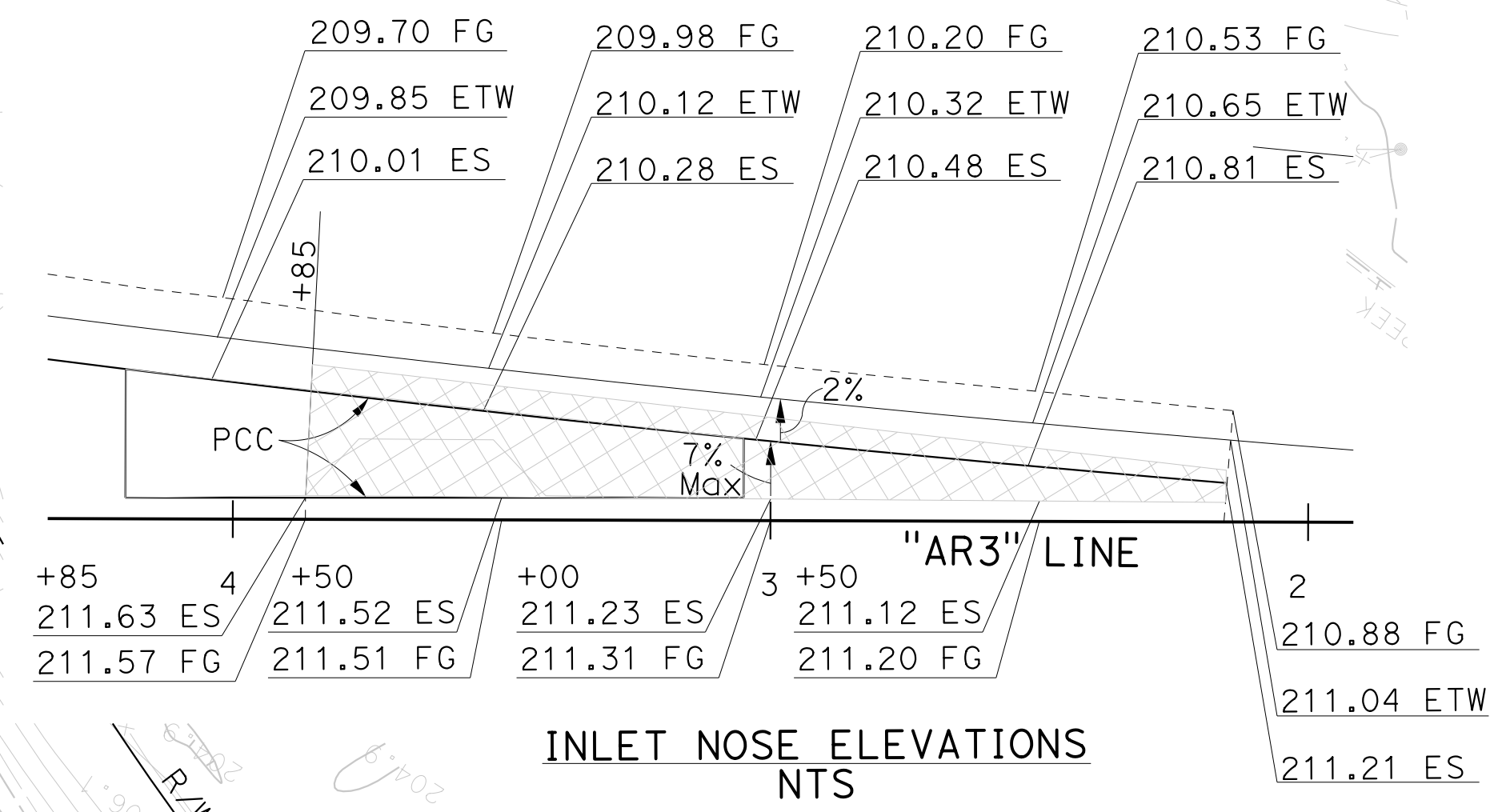


FOR PAVEMENT ELEVATIONS NOT SHOWN,  
 SEE SHEETS C-17 & C-18

NOTE: THIS CONTOUR GRADING EXHIBIT IS PROVIDED FOR INFORMATION.  
 EXISTING GROUND ELEVATIONS AND CONTOURS HAVE BEEN OBTAINED  
 BY AERIAL PHOTOGRAMMETRY METHODS AND ARE ACCURATE TO  
 NORMAL STANDARDS FOR AERIAL PHOTOGRAMMETRY.



INLET NOSE ELEVATION DETAIL  
 SEE RIGHT.



**CONTOUR GRADING  
 EXHIBIT**  
 SCALE: 1" = 50'  
**3 OF 3**